



# Dell Inspiron 8600 Upper Case Replacement

We will show you how to remove the display...

Written By: John Nesthus



# INTRODUCTION

We will show you how to remove the display module which will then allow you to remove the upper case.

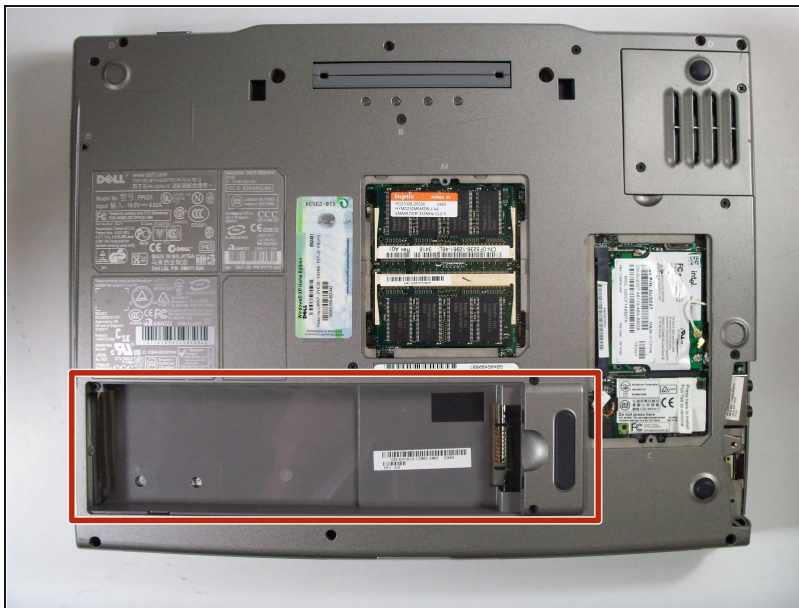
---

## TOOLS:


Phillips #1 Screwdriver (1)

---

### Step 1 — Battery



- Remove the battery from the bottom left of the laptop as shown.

 **Remove the battery before operating on the computer to avoid electrocution.**



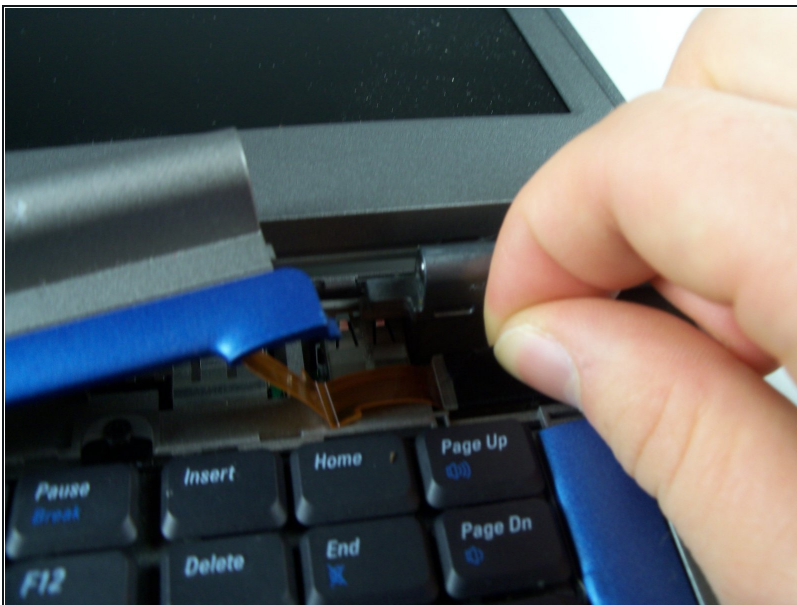
## Step 2 — Hinge Cover



- Insert a spudger into the notch at the far left side of the top blue panel and pry the hinge cover off.
- You may need to pry the other side off as well. You can do this by inserting the spudger between the hinge and the top cover.

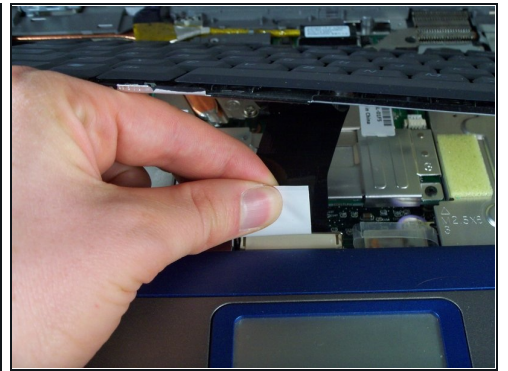
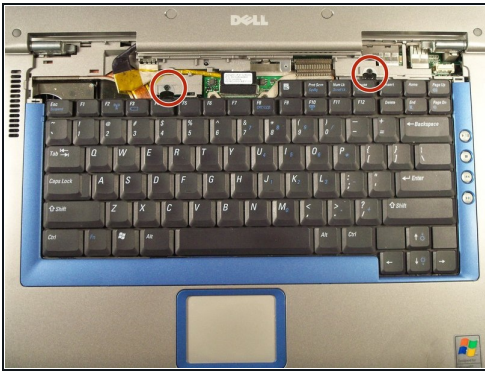
⚠ Be careful of the wire attached to the underside of the hinge cover.

## Step 3



- Pull the small black tab on the right hand side of the laptop.
- You have now removed the hinge cover.

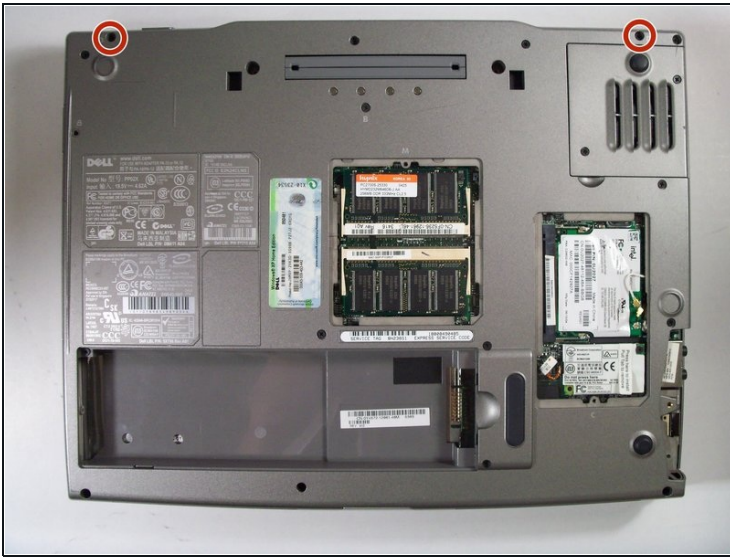
## Step 4 — Keyboard



- Using the Phillips #1 remove the screws at the top of the keyboard as indicated.
- ⓘ Do not just lift up. There is a tab underneath the keyboard that is still connected to the mother board.
- You will need to pull out the white tab underneath the keyboard upwards until it pops out of its socket.
- ⓘ The keyboard should be easily removable at this point.

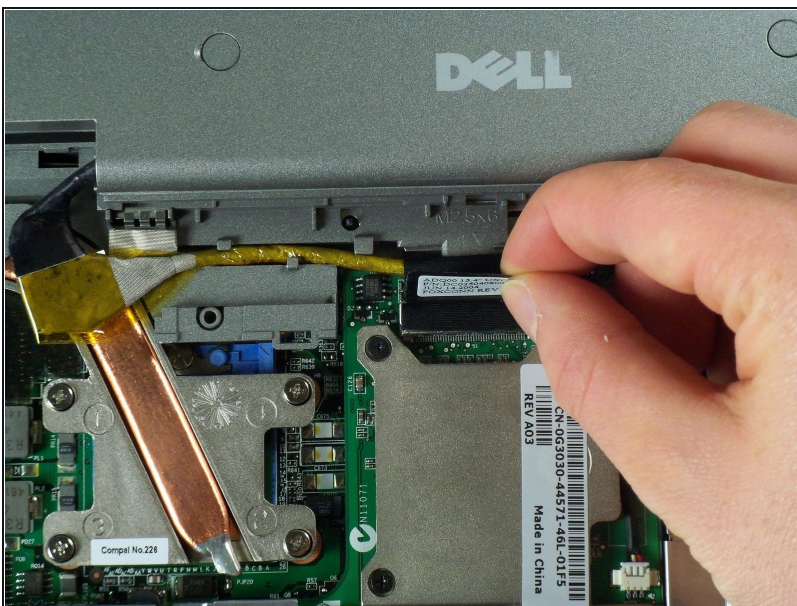


## Step 5 — Display Module



- Flip the laptop over and remove the indicated screws.
- Flip the laptop back over.
- Find the two places where the display module is attached to the base of the computer.

## Step 6



- Disconnect the video card from the display module by gently lifting upwards on the black tab.

## Step 7



- Lift the display module directly upwards from the base of the computer.

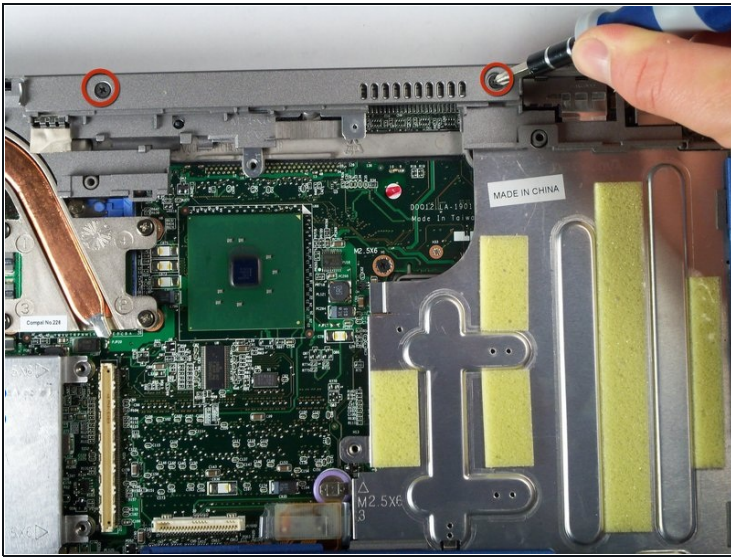
## Step 8



- Now remove the display module.



## Step 9 — Upper Case



- Remove the two screws that hold the upper case.
- You can now pop up the upper case and replace.

To reassemble your device, follow these instructions in reverse order.