



Lens Replacement

Warning: Because of the complex and requirement for precision equipment and also many screws on the camera if you prefer not to risk damage to your camera.

Written By: Marina Bayardo

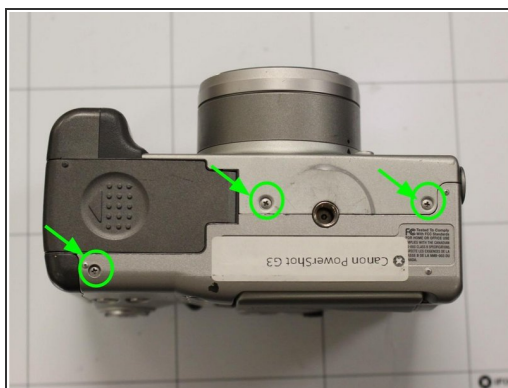




TOOLS:

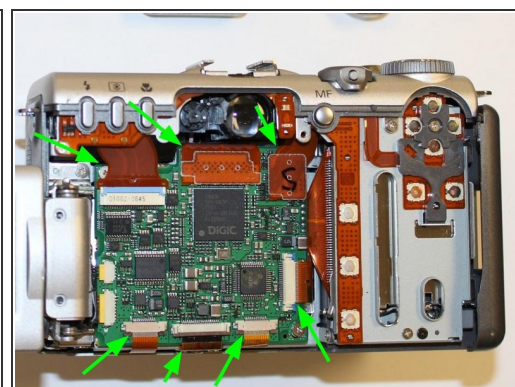
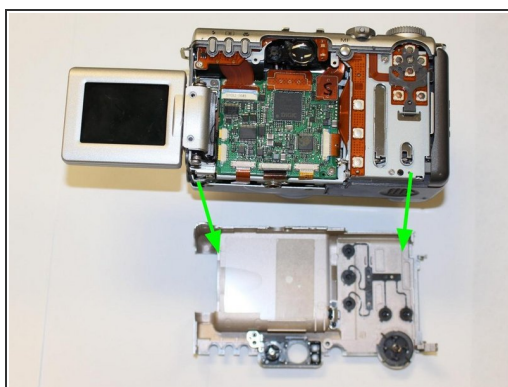
- [Essential Electronics Toolkit](#) (1)
-

Step 1 — Lens



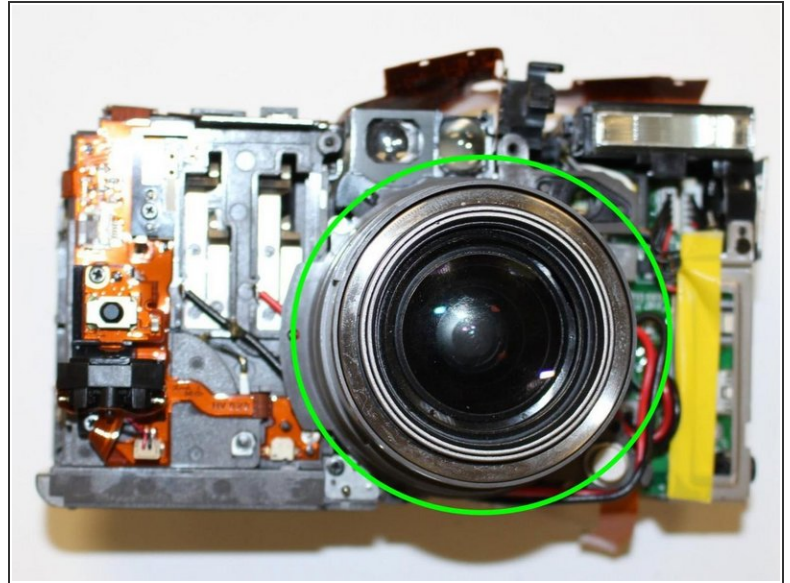
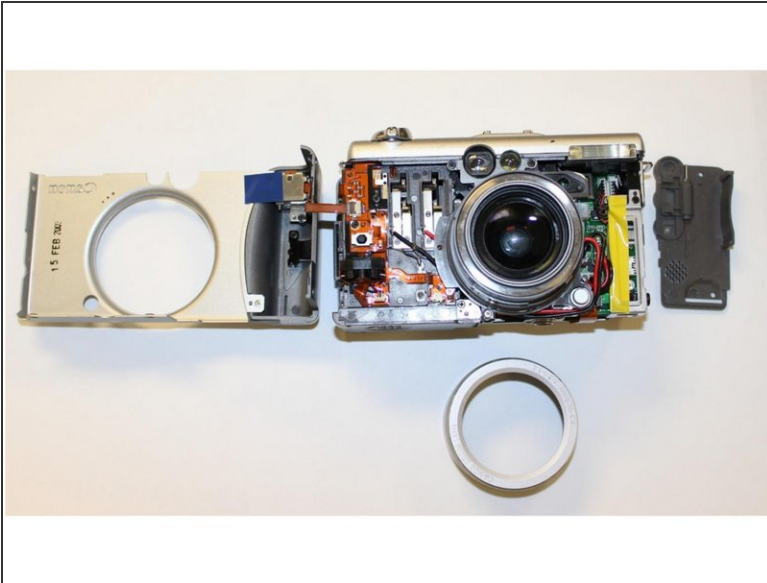
- **Step 1. Remove:** Remove the indicated screws from the camera.

Step 2



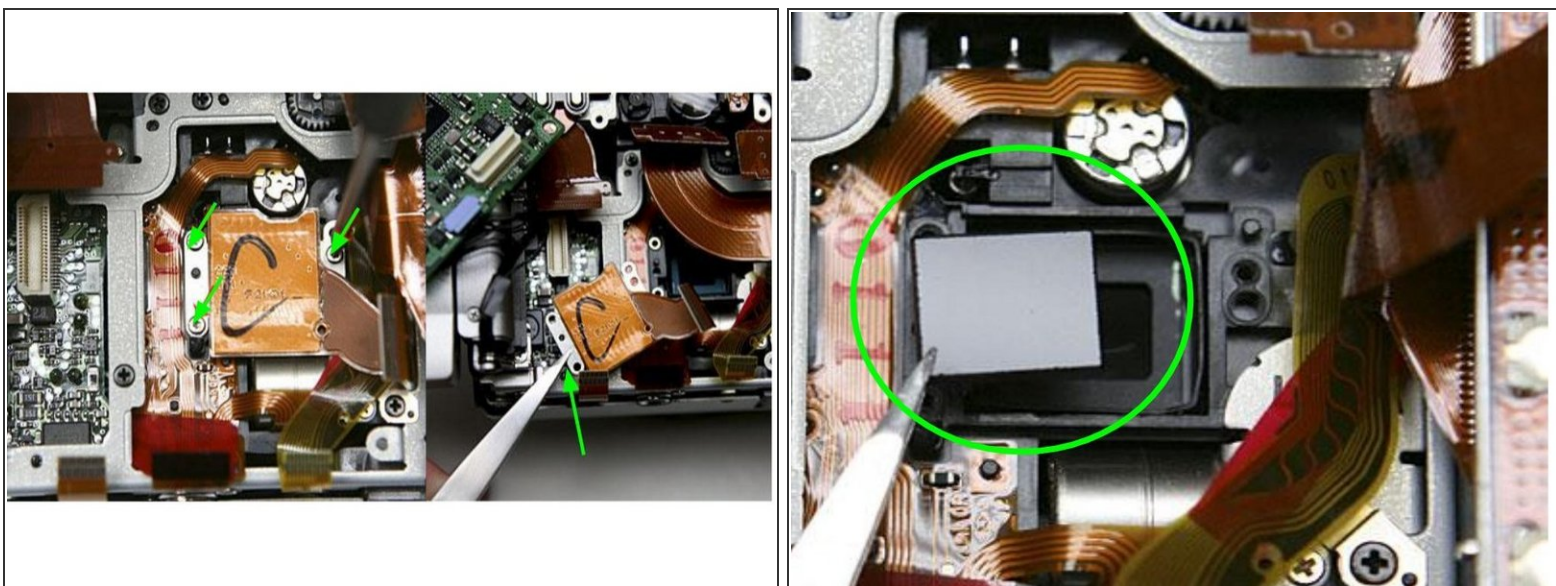
- **Step 2. Remove all the screws:** Keep all the screws and disconnect the cables carefully.
- **Step 3. Lift:** After removing all the cables, lift up and flip over the PCB.

Step 3



- **Step 4. Remove:** Remove marked screws on top and around the lens.
- ****Remove all the parts, be aware that there are a lot of screws and keep count them a long the way of the dissambley ****

Step 4



- **Step 5.** Carefully remove as much of the glue as possible before proceeding to the next step.
- **Step 6.** Remove the marked focus spacers.
- Place a bead of silicone adhesive on each side of the ir filter to fix it in position and allow to cure.

To reassemble your device, follow these instructions in reverse order.