



# Sanyo VPC-T850 Shutter Button Replacement

Written By: James Robinson

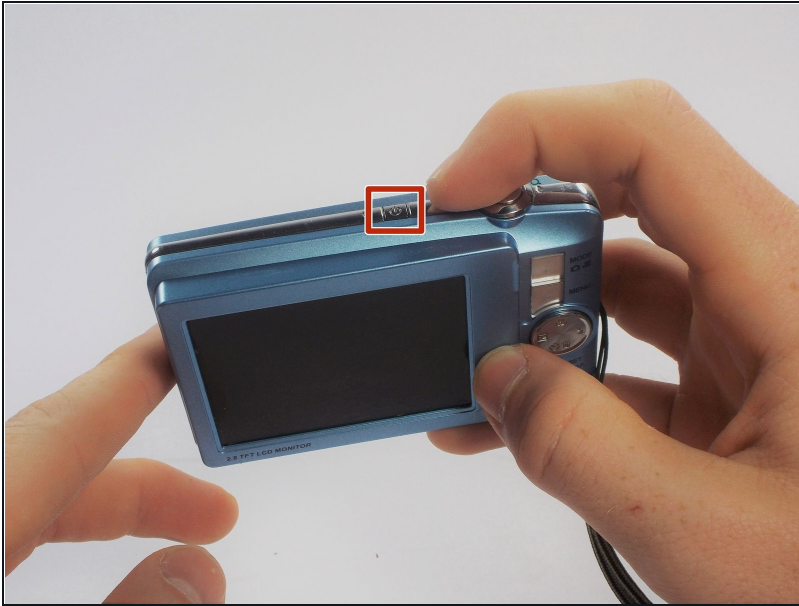


## TOOLS:

Phillips #000 Screwdriver (1)

iFixit Opening Tool (1)

### Step 1 — Battery



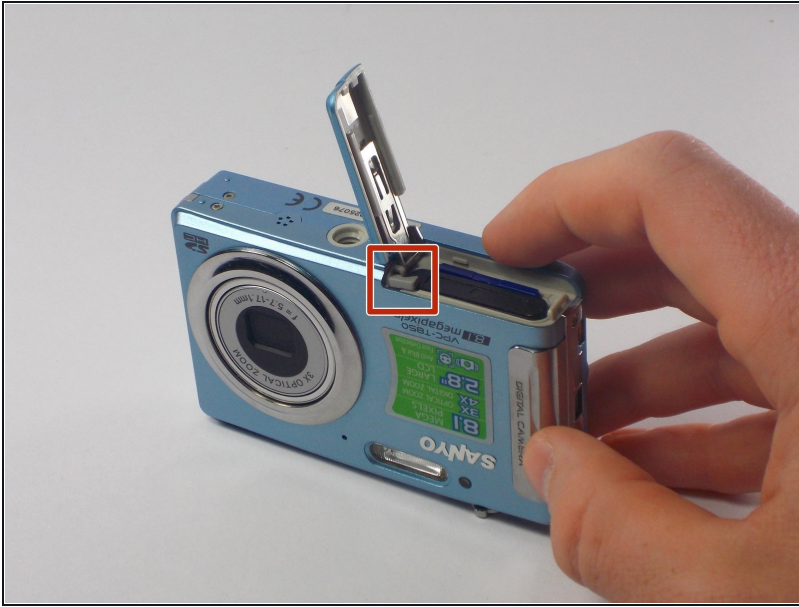
- Make sure the camera is powered off by pressing and holding the small, square button embedded in the top rim of the camera.

### Step 2



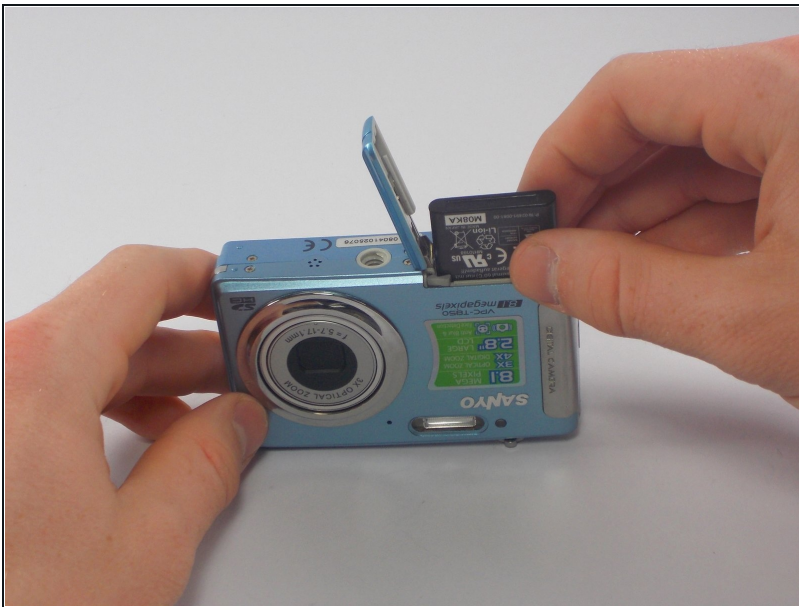
- Locate the hatch found on the bottom of the camera.
- Open the hatch by gripping the small notch and sliding it outwards.

### Step 3



- Push the small, plastic arm out of the way to free the battery.
- ① The battery is spring loaded and will pop out slightly when the arm is moved.

### Step 4



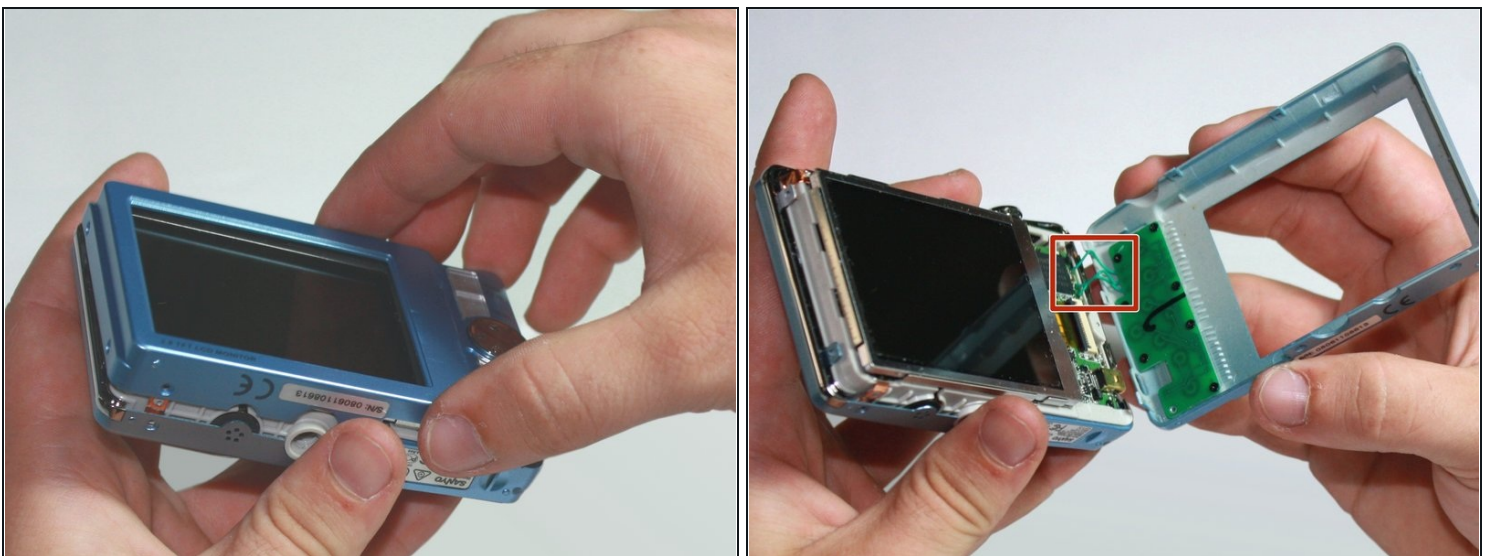
- Pull the battery out of the camera and close the hatch.
- ★ To reinsert, there is a triangle on the battery indicating which direction to slide it in.

## Step 5 — Outer Casing



- Using your Phillips #000 Screwdriver, remove the eight screws located around the sides and bottom of the camera.
  - ⓘ Be sure to keep track of the side each screw comes from, as they come in different lengths.

## Step 6

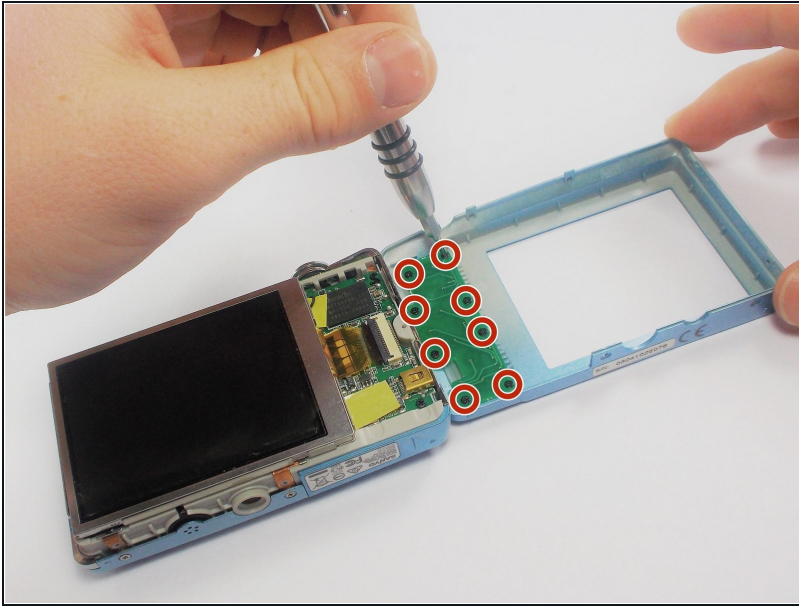


- Orient the camera so the display is facing up.
- Gently pull off the rear panel surrounding the display.

⚠ There are still three green wires connecting the panel to the rest of the camera.

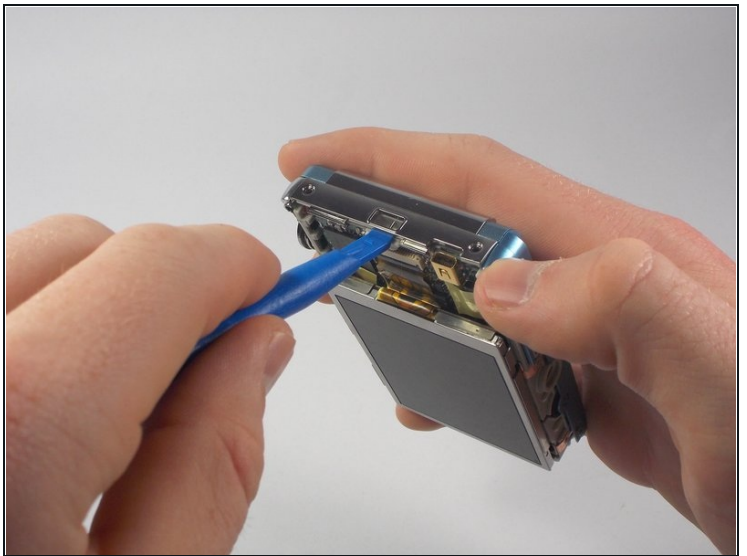
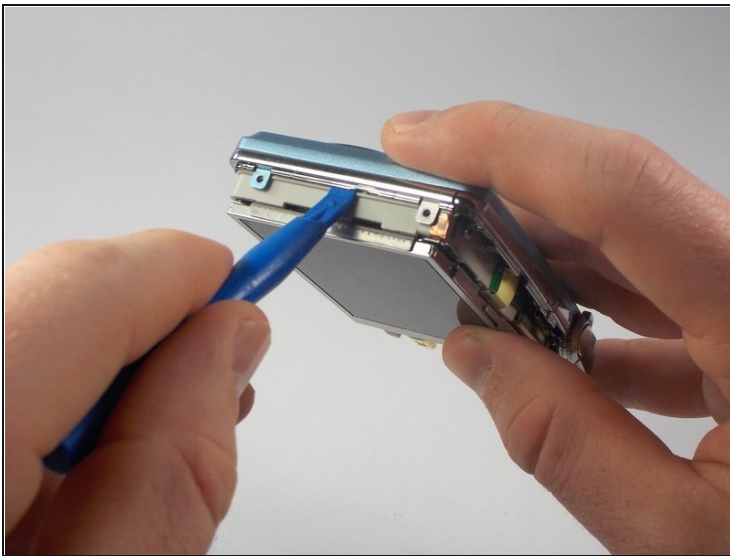
- ⓘ Use your prying tool if you have difficulties removing the panel by hand.

## Step 7



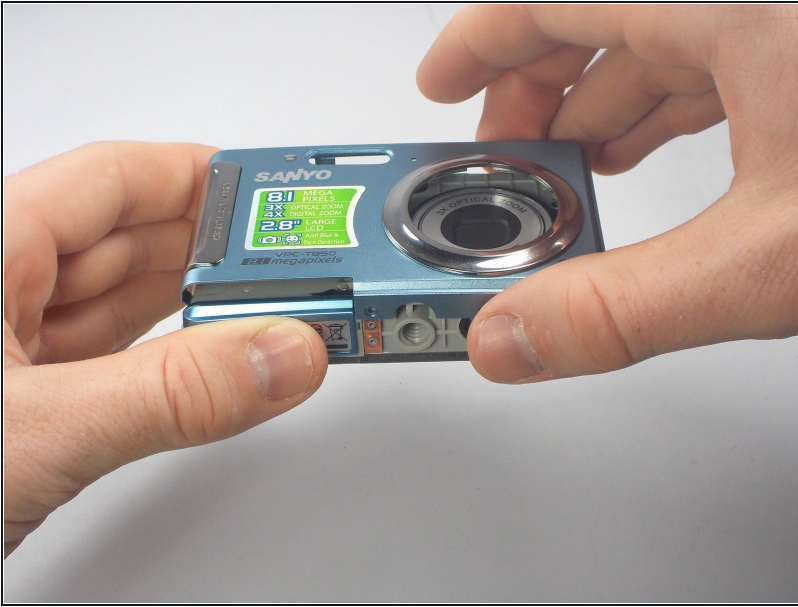
- Remove the eight black screws connecting the keypad circuit board to the rear panel.

## Step 8



- With a plastic opening tool, gently remove the chrome framing on the left and right sides of the camera.

## Step 9



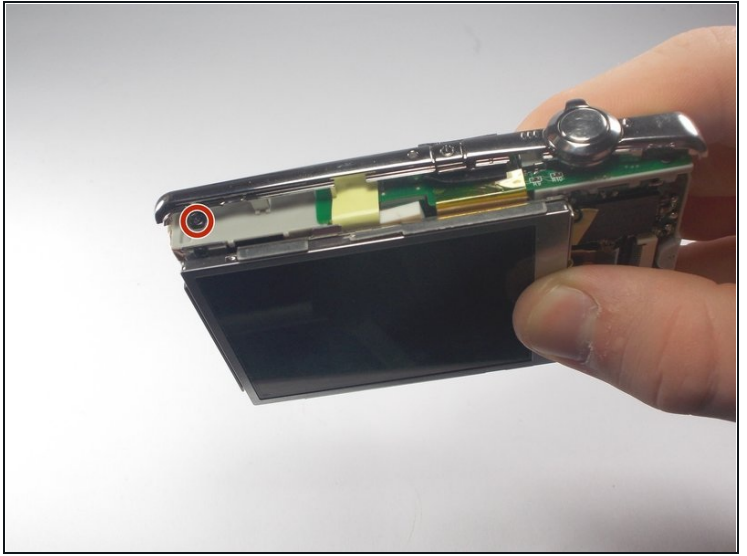
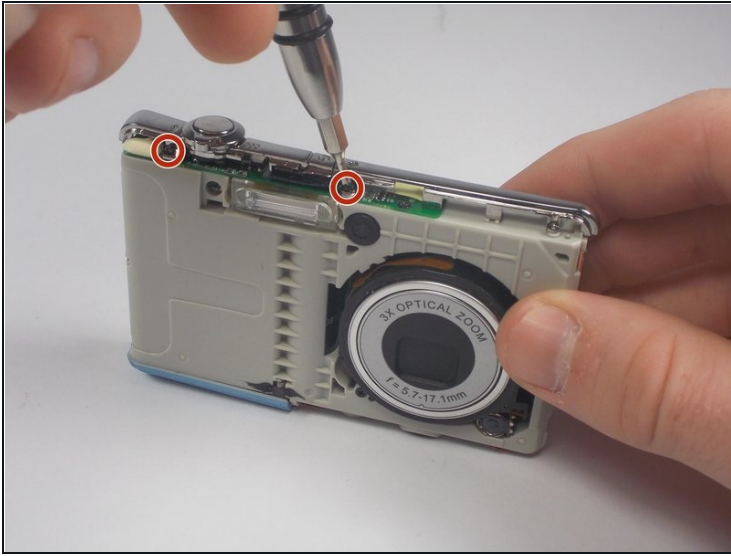
- Flip the camera over so the lens is facing up.
- Gently lift up the front panel to remove it from the rest of the camera.
- ① Use your plastic opening tool if you have difficulties removing the panel by hand.

## Step 10 — Shutter Button



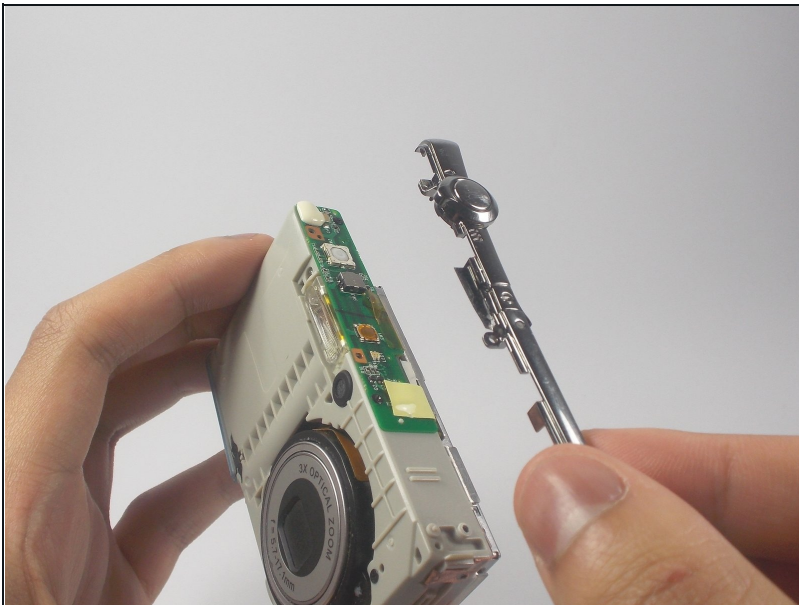
- Find the chrome framing located on the top of the camera.
- ① The physical shutter button apparatus is directly attached to this frame.

## Step 11



- Remove the three black screws connecting the chrome frame to the camera.
- ① Three screws are located toward the front, with the remaining one above the display.

## Step 12



- Gently remove the loosened chrome frame and connected shutter button from the camera.

---

To reassemble your device, follow these instructions in reverse order.