



PowerBook 3400 M3553 Display Replacement

How to replace a damaged or faulty display.

Written By: Michael Mondragon



INTRODUCTION

If your display is broken or damaged you will need to replace the entire display.



TOOLS:

- [T8 Torx Screwdriver](#) (1)
-

Step 1 — Battery



- Close the screen and turn the PowerBook over, orienting the computer upside down, using the label to guide you.

Step 2



- Hold the button on the front left side and slide the battery out.

Step 3 — Keyboard



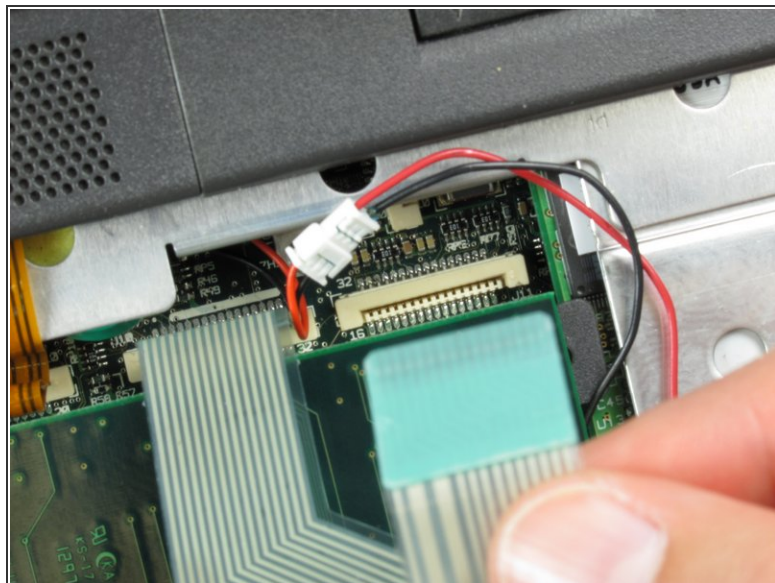
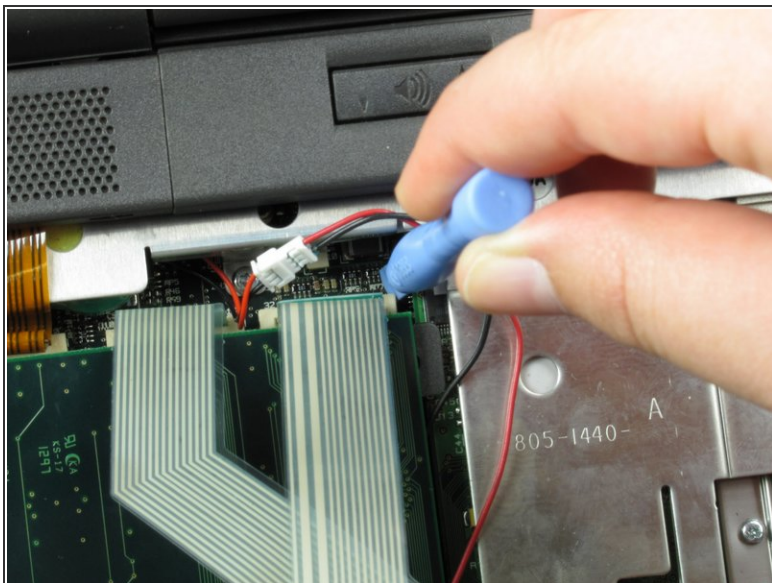
- With a Torx T8 screwdriver, remove the three Torx 24mm screws along the center of the back panel.

Step 4



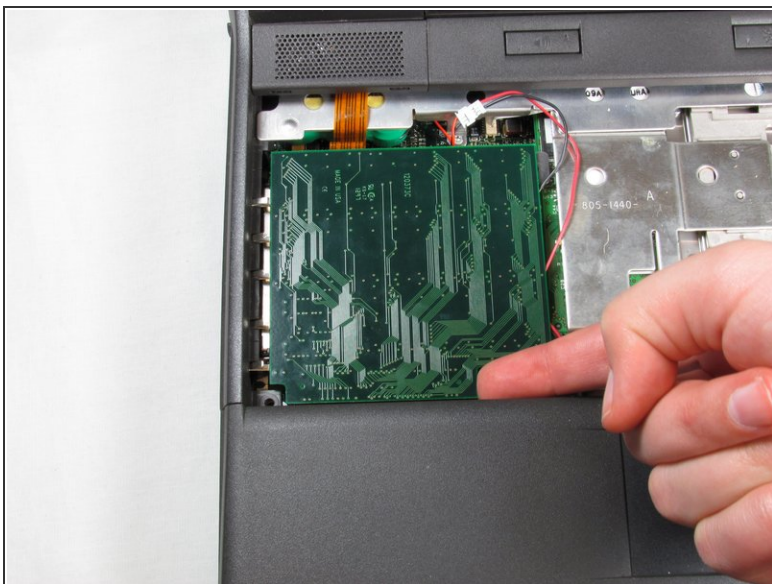
- Turn the computer over and open the display. You should see that the keyboard is loose.
- ⚠ Before attempting to remove the keyboard, note that a ribbon cable connects the keyboard to the logic board. Improper removal may damage your keyboard.
- Slightly lift the front of the keyboard up, and slide the keyboard towards yourself.
 - Carefully lift the top half of the keyboard and pull it towards yourself.

Step 5



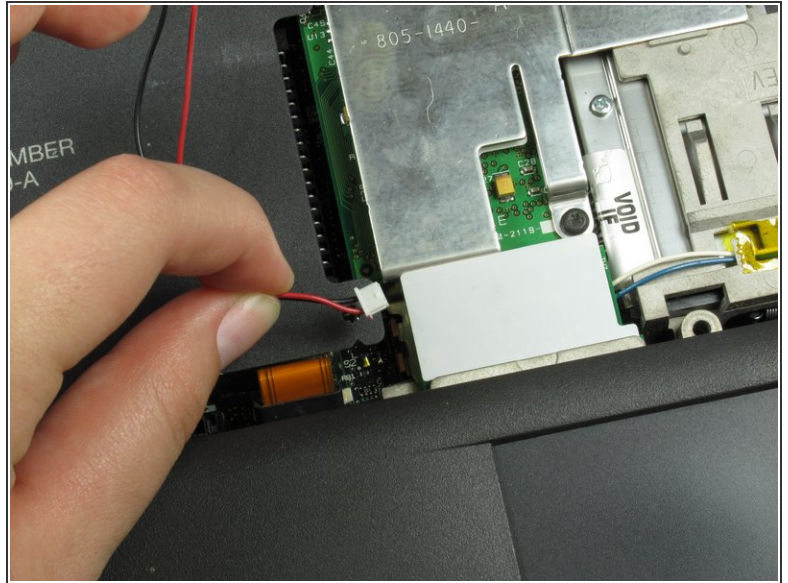
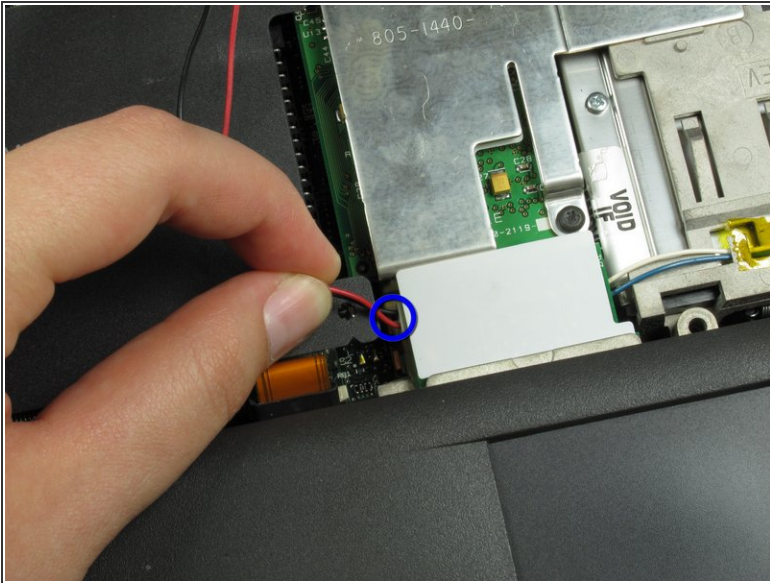
- Loosen the ribbon cables connecting the keyboard to the computer by using a plastic opening tool to lift the tabs on either side of the cable port.
- Gently remove the ribbons from its tabs.

Step 6 — RAM



- Gently wiggle the RAM card to loosen the connection until it pulls free.

Step 7 — Speaker Panel



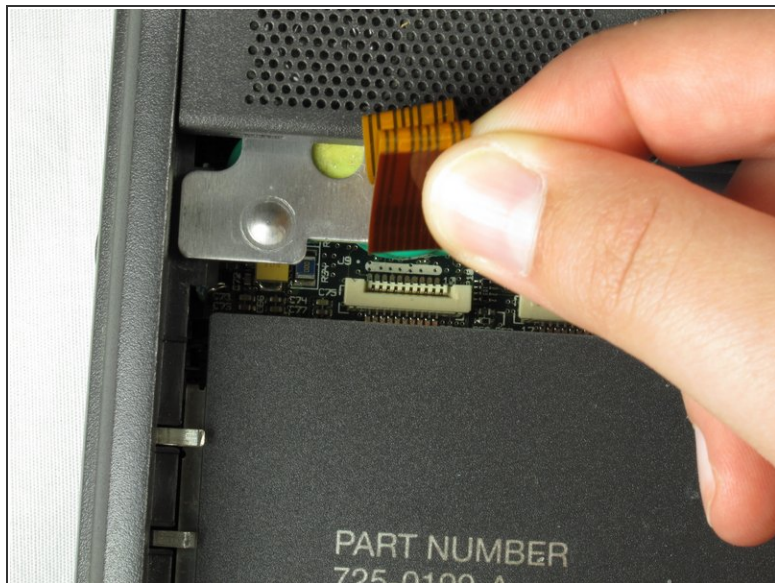
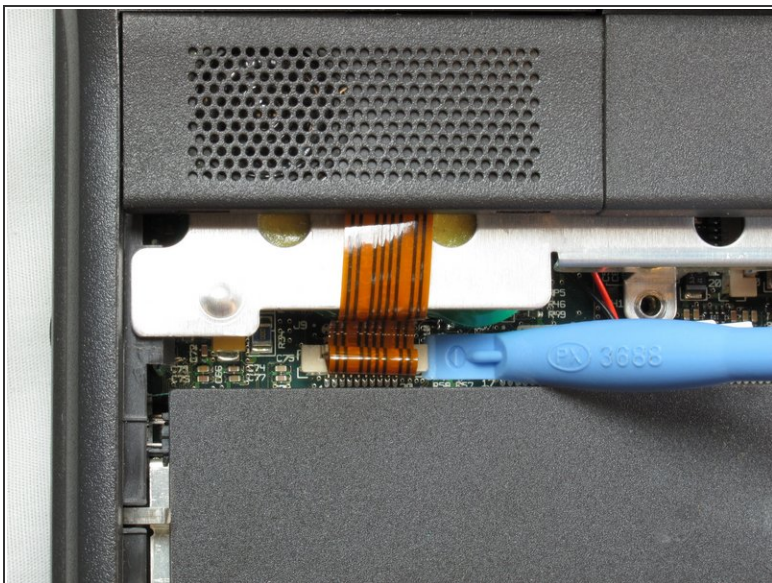
- Disconnect the wires from the port.

Step 8



- Remove the 7mm screw connecting the speaker panel to the computer.

Step 9



- To detach the speaker panel's ribbon cable, use a plastic opening tool to lift the tabs on both sides of the cable port.
- Once loose, pull the ribbon cable free.

Step 10



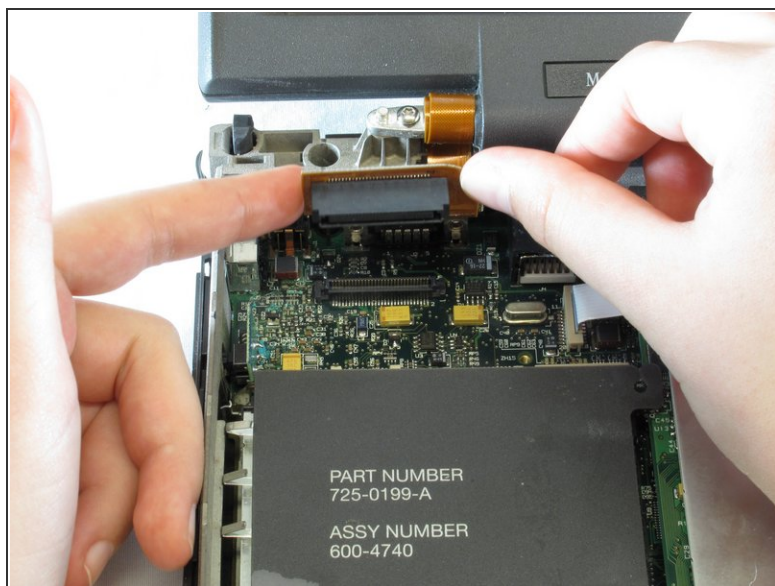
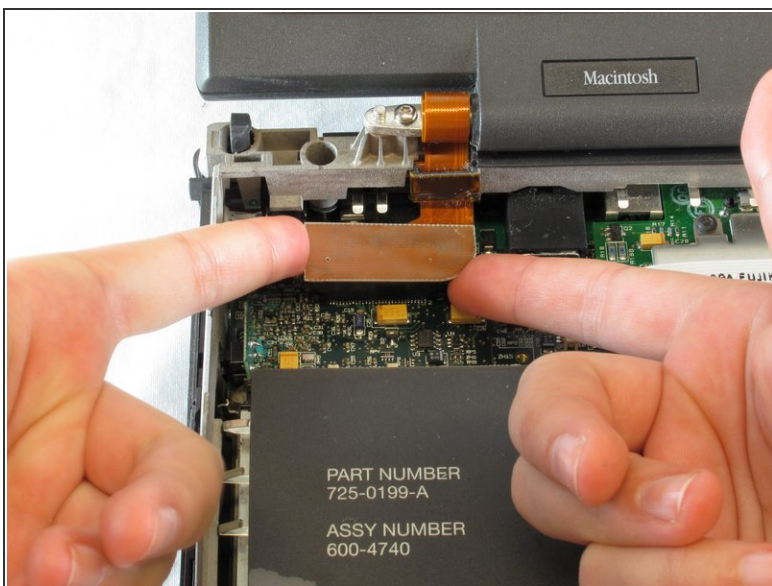
- Lift the lighting/audio panel from it's bottom corners and pull the panel towards yourself.

Step 11 — Display



- Remove the panels on either side by gently but firmly pulling up on them with both hands.

Step 12



- Gently pull up on the ribbon cable connection that connects the screen to the logic board.

Step 13



- ⚠ The two T8 13 mm torx screws hold the display screen in place. Be sure to remove the screws while supporting the screen or else it will fall.
- Remove the two T8 13 mm long torx screws on either side of the display, located under the side panels.
 - Gently pull the display free of the computer.

To replace the display, follow these instructions in reverse order.