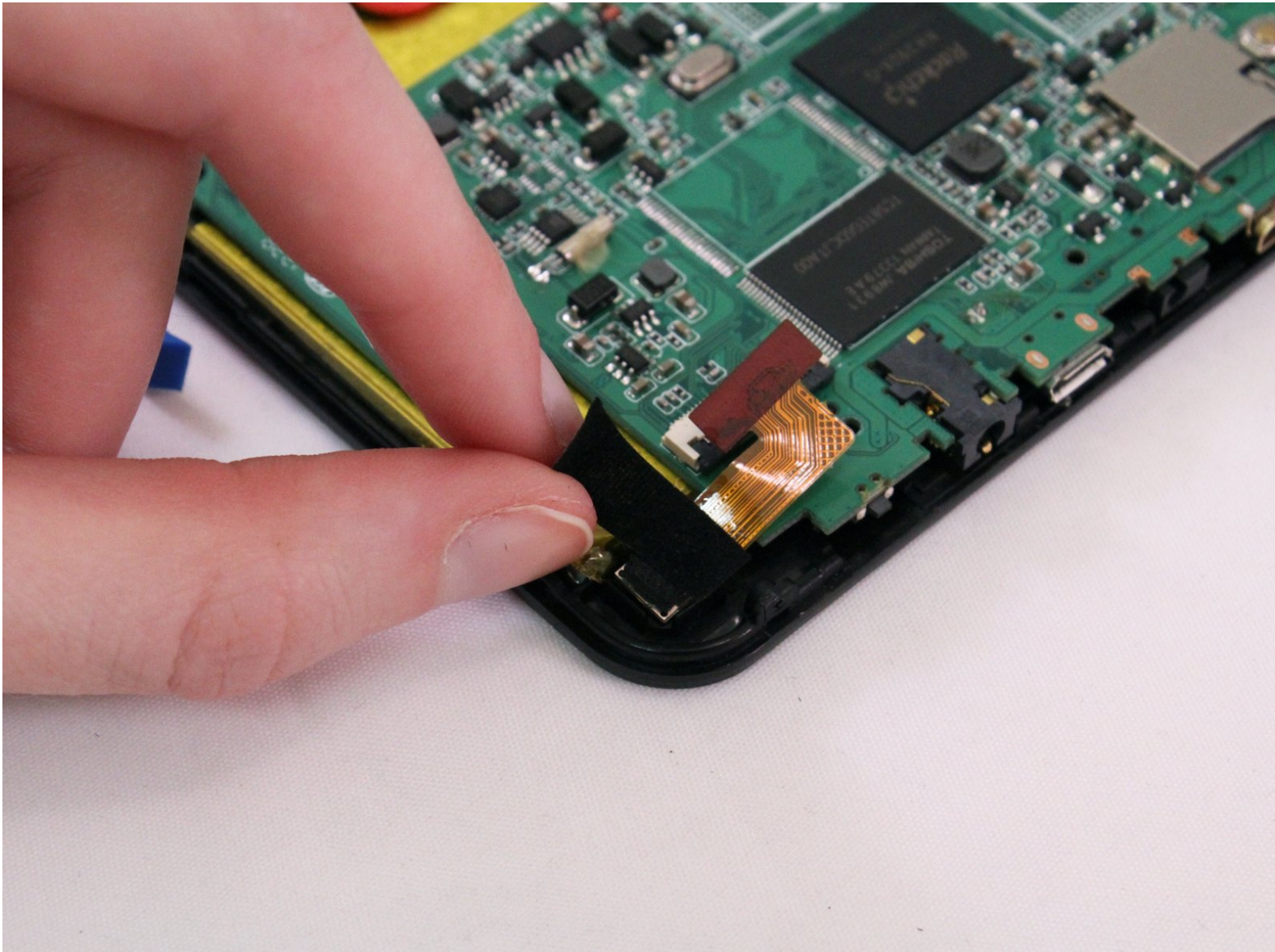




# ProScan PLT7223G Front Facing Camera Replacement

Replace your broken or malfunctioning camera.

Written By: Laura Kneeshaw



---

# INTRODUCTION

Blurry photos? Camera not working at all? Use this guide to replace the camera.

---



## TOOLS:

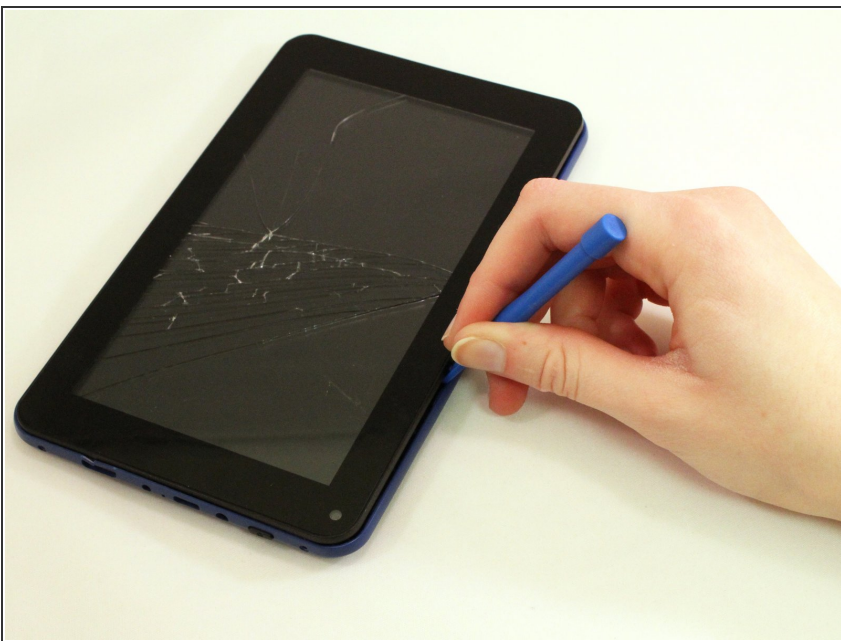
- [Phillips #00 Screwdriver](#) (1)
  - [iFixit Opening Tools](#) (1)
-

## Step 1 — Front Facing Camera



- Remove both 4 mm screws on the top of the tablet with a PH00 screw driver.

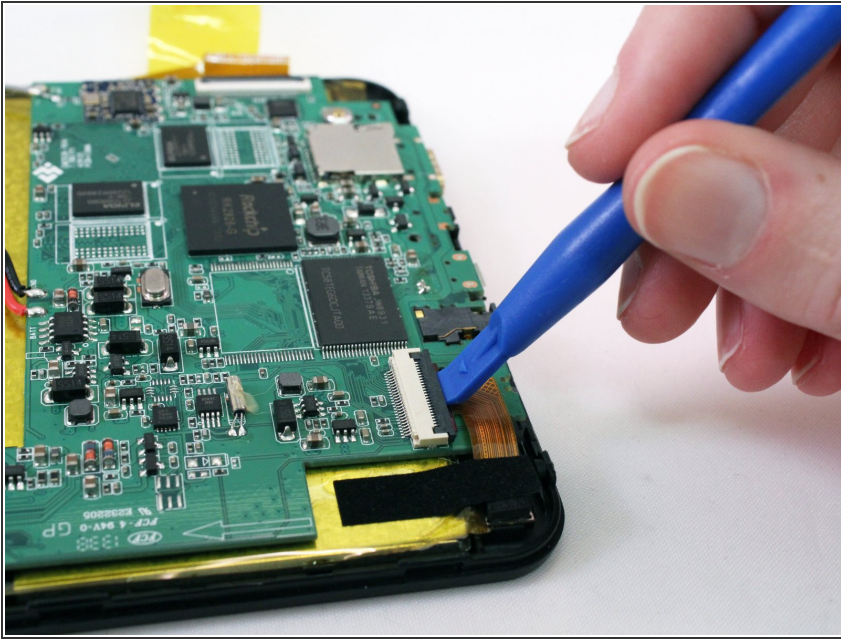
## Step 2



- Use the blue plastic opening tool to pry open the tablet.
- ⓘ You will hear popping sounds. That's okay.
- ⚠ Be careful when using the blue plastic opening tool on the side of the device near the speakers, as there is a wire here that connects the speakers to the motherboard.

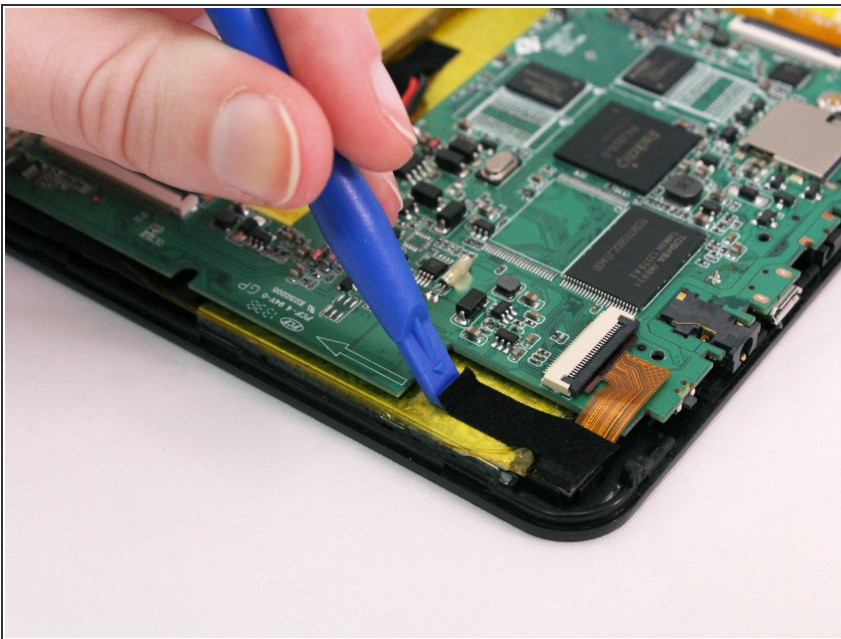


### Step 3



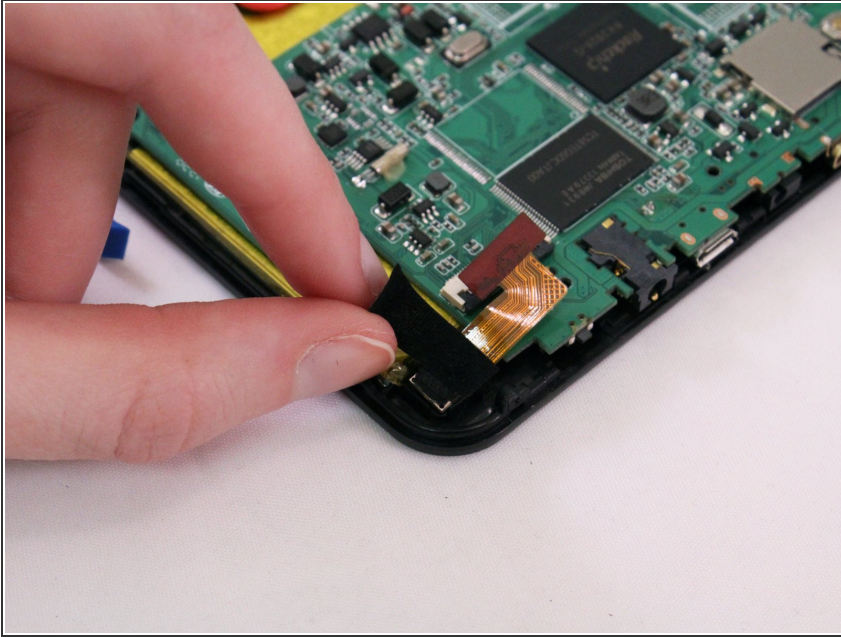
- With a spudger, flip up the ZIF connector that connects the camera's ribbon cable to the motherboard. This will release the ribbon cable.

### Step 4



- Remove the black tape holding down the ribbon cable.

## Step 5



- Remove camera.

To reassemble your device, follow these instructions in reverse order.