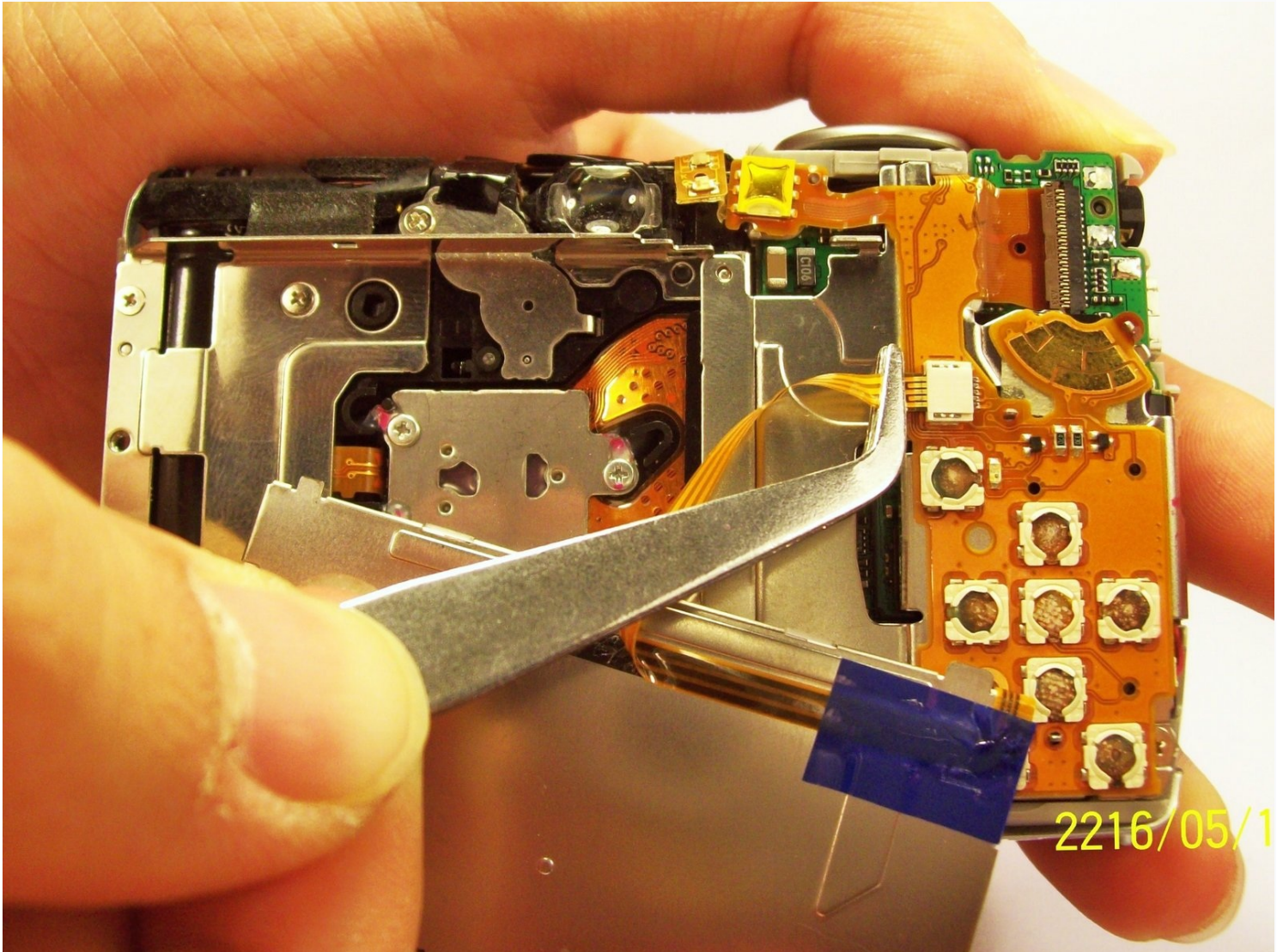




Canon PowerShot SD700 Backlight Replacement

Follow these instructions to remove and install...

Written By: Emilio Rossi



2216/05/1

INTRODUCTION

Follow these instructions to remove and install a new backlight.

TOOLS:

[Phillips #00 Screwdriver](#) (1)

[Tweezers](#) (1)

[iFixit Opening Tool](#) (1)

Step 1 — Outside Case



- Turn off the camera by pressing the power button above the LCD screen.

Step 2



- Remove the two, small screws on the bottom of the camera using a Phillip's #00 screwdriver.

Step 3



- Use a Phillips #00 screwdriver to remove the two, small screws on the right side of the camera.

Step 4



- Use a Phillips #00 screwdriver to remove the screw on the left of the camera under the A/V out Digital label.

Step 5



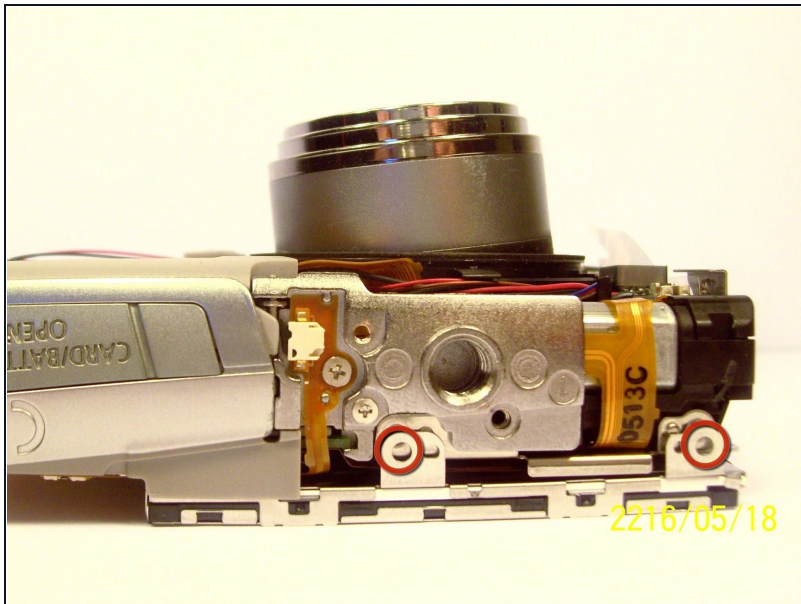
- Use a Phillips #00 screwdriver, remove the screw on the bottom of the camera near the battery and memory card slots.
- ① This screw will be longer than the rest of the screws.

Step 6



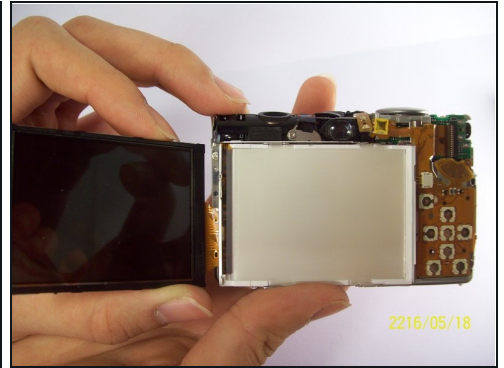
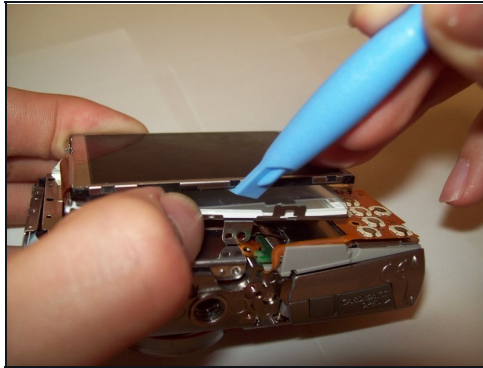
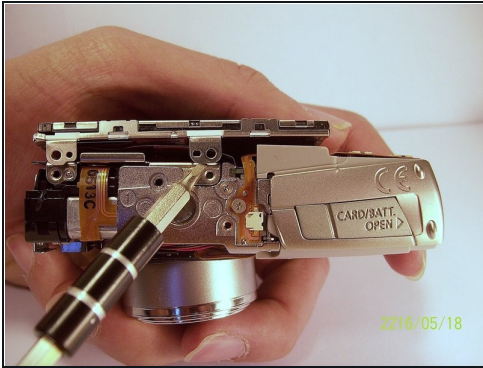
- Remove the front, back, and side casings from the camera and set to the side.

Step 7 — LCD screen



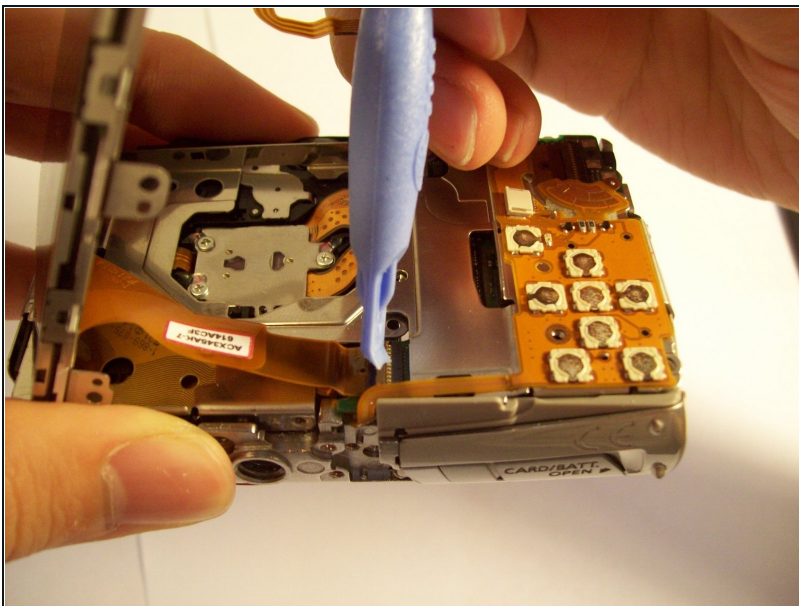
- Remove the two screws that connect the LCD and backlight to the main body of the camera.

Step 8



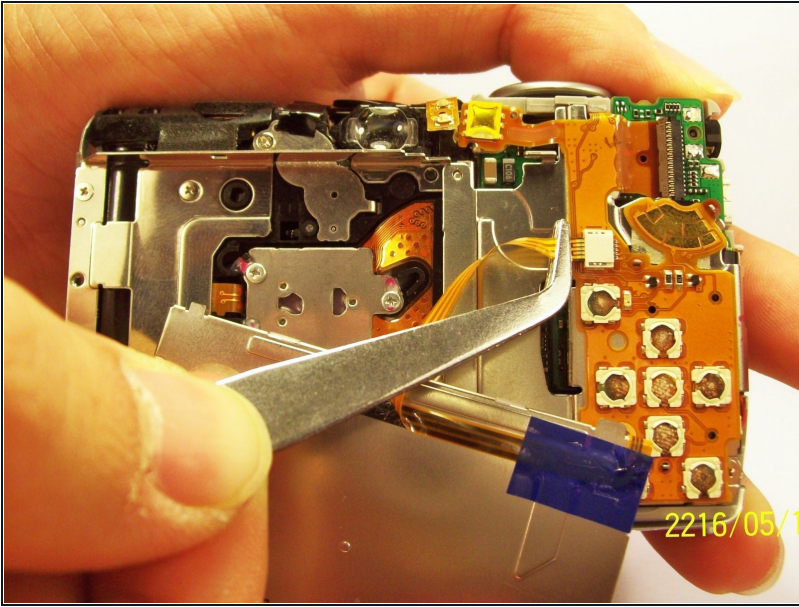
- Gently pry the LCD and the backlight from the main body of the camera.
- Gently pry the LCD from the backlight.
 - The thin ribbon cable is for the backlight.
 - The thick ribbon cable is for the LCD screen.

Step 9



- Carefully lift the ZIF connector that covers the thick ribbon cable.
- This ZIF connector is fragile. Use caution when lifting it from its down position.
- Insert the new LCD and reassemble the camera.

Step 10 — Backlight



- Unplug the ribbon from the housing on the circuitry.
- Take the new ribbon and insert it into the housing.
- [Tweezers](#) or a tool with a sharp point can be used.

To reassemble your device, follow these instructions in reverse order.