



Mophie PowerStation 5X Teardown

Open the Mophie Power Station 5X for teardown and repair purposes

Written By: Larry Chen



INTRODUCTION

Open and disassemble the power pack for repair purposes. More details:

<https://www.facebook.com/notes/larry-che...>



TOOLS:

- [Metal Spudger Set](#) (1)
 - [flat head & philips screw driver](#) (1)
-

Step 1 — Mophie PowerStation 5X Teardown



- The device.

Step 2



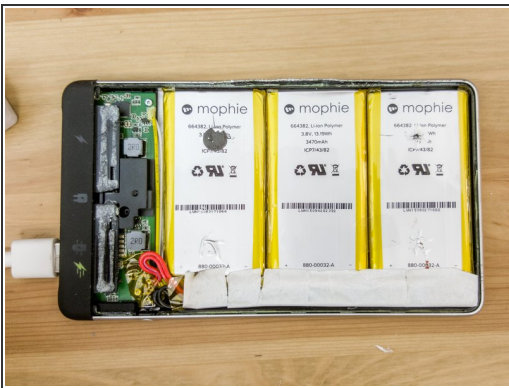
- Open the device using a flat head screwdriver and pry the lid up from the middle carefully.
- Use a metal spudger along the side to open the lid.
- Don't push inside too much.
- This will damage the metal case.
- The lid is glued to the plastic in the front.

Step 3



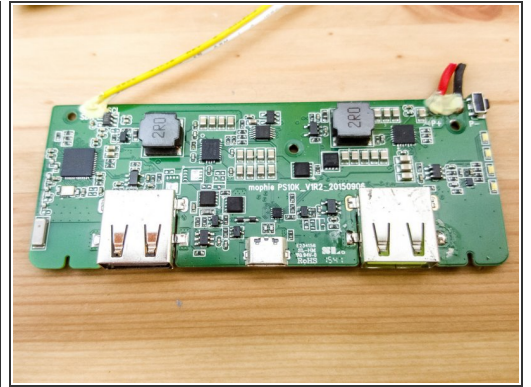
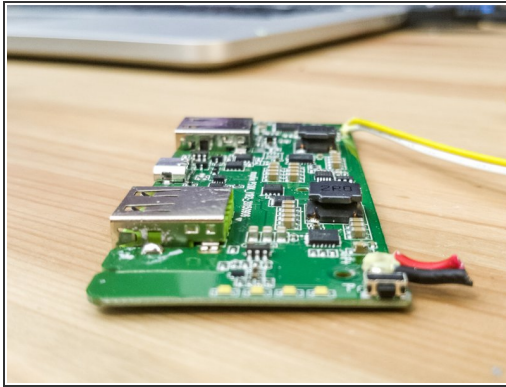
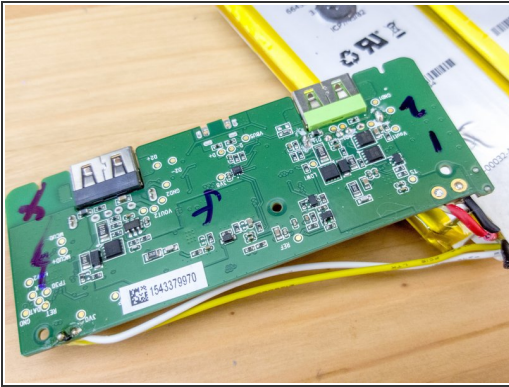
- Disconnect the battery pack.
- If you're having problems with the device, disconnect the battery and then reconnect it. That solved the no output problem for me.

Step 4



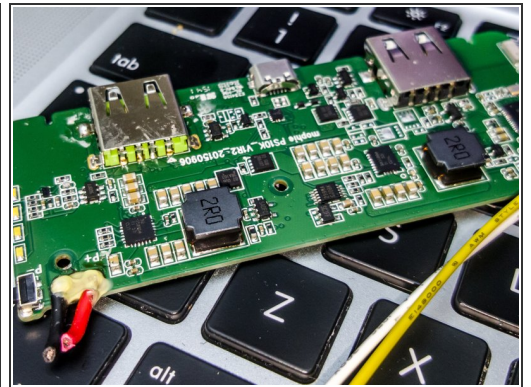
- Photos of interior.
- Battery is lightly glued.

Step 5



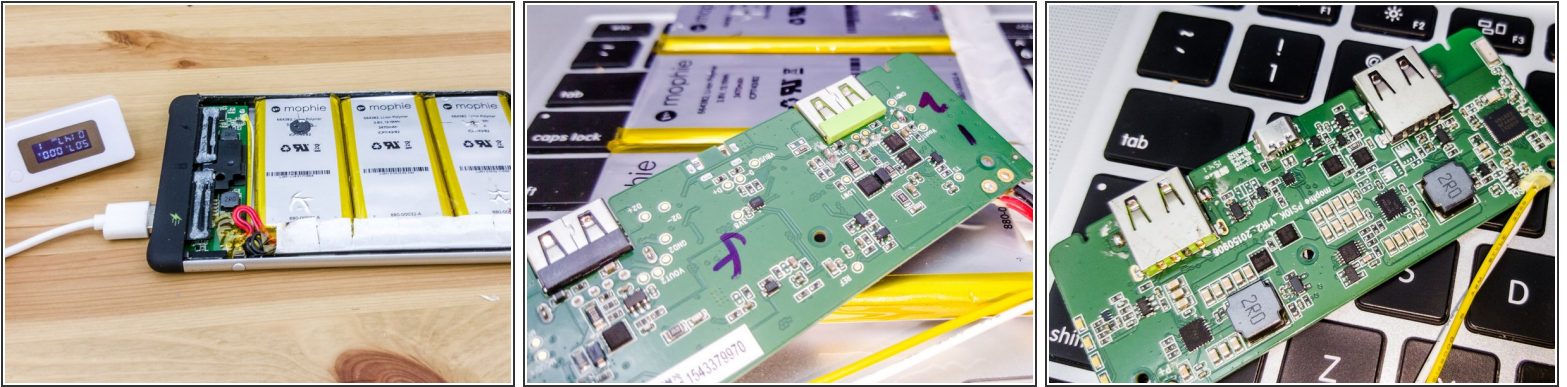
- [More images](#)

Step 6



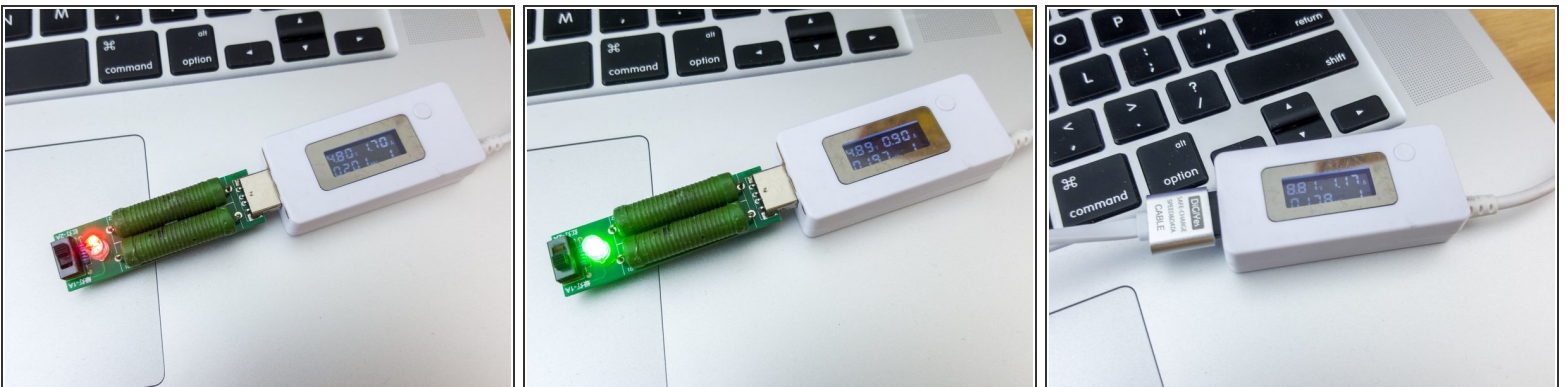
- [More photos](#)

Step 7



- [More images](#)

Step 8



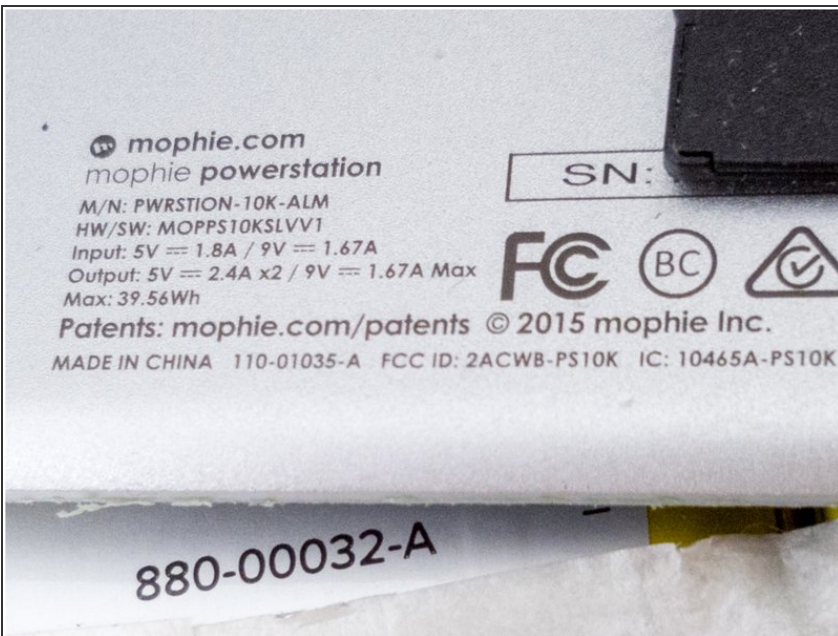
- Power and current measurements. Red light is 2A load, green is 1A load. Max. power draw of Galaxy Note5 connected to fastcharge port is 1.62A.
- Charge current measured at 5V and 9V.

Step 9



- simultaneous input and output supported.

Step 10



- ratings