



# Samsung Epix LCD Display Replacement

This guide shows you how to access the LCD...

Written By: Mark Wyse



# INTRODUCTION

This guide shows you how to access the LCD display inside your phone.

---

## TOOLS:

[Phillips #00 Screwdriver](#) (1)

[iFixit Opening Tool](#) (1)

[Spudger](#) (1)

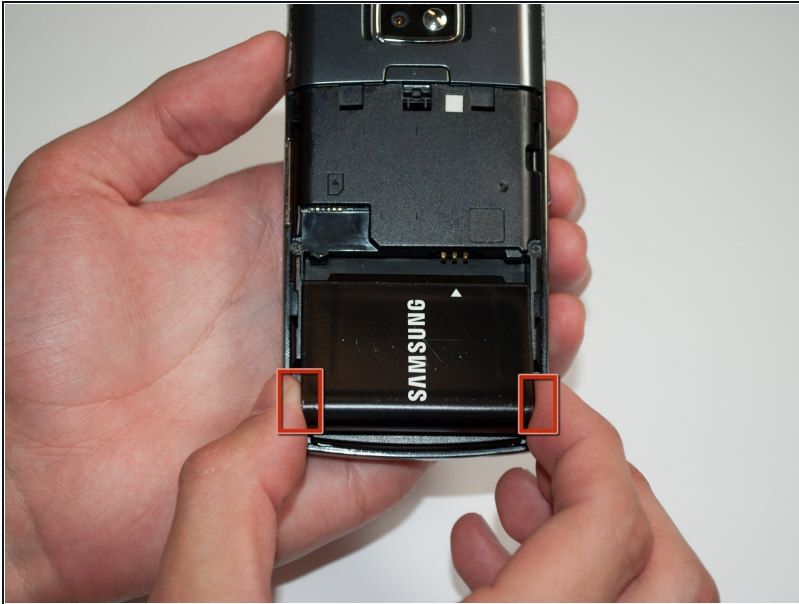
---

## Step 1 — Battery



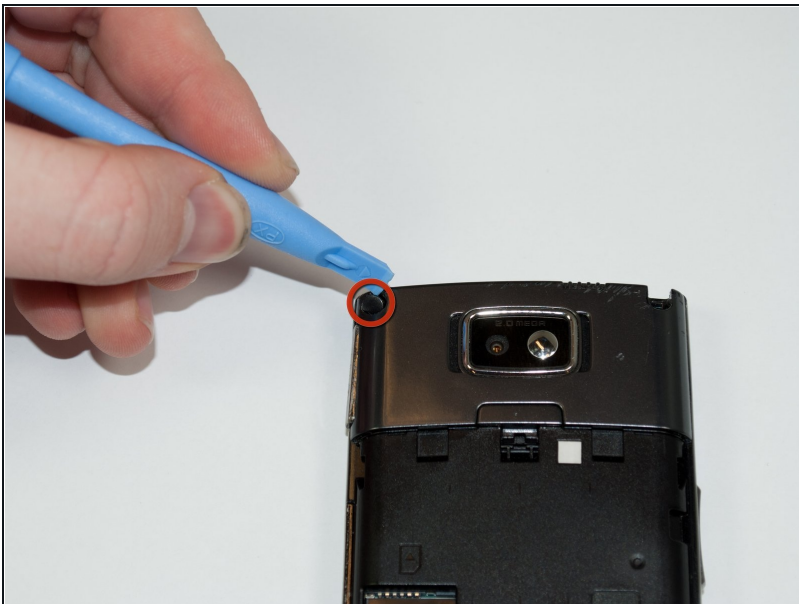
- Press button on back of phone below camera.
- While button is depressed, remove the back panel of the phone by it sliding off (not shown in picture).

## Step 2



- Grasp the bottom corners of the battery with two fingers and gently lift.

## Step 3 — LCD Display



- Remove the rubber screw cover in the top left corner by prying upwards with an opening tool.

## Step 4



- Use a Phillips #00 screwdriver to remove the six screws on the back of the phone.
- ⓘ The upper right screw is 4.5 mm and the others are 6.5 mm.

## Step 5



- Slide the opening tool along the seam on the side of the phone and turn it slightly to unhook the eight clips.
- ⓘ There are three clips on each side and two at the bottom of the phone.

## Step 6



- Once all eight of the clips have been unhooked, lift the back panel off of the phone.

⚠ **Be careful not to remove the front panel.** It will still be connected to the phone chassis by a ribbon cable on the motherboard.

## Step 7



- Using an opening tool, undo the [ZIF connector](#) halfway up the right side.

⚠ **Carefully remove ribbon cable.**

## Step 8



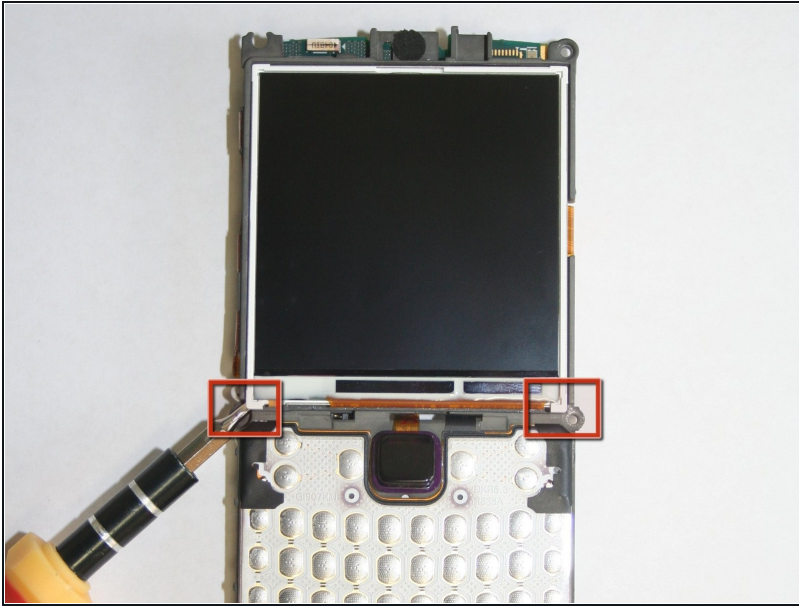
- Remove the front faceplate by lifting it off of the phone chassis.

## Step 9



- Using the opening tool, unlatch the LCD ribbon cable.

## Step 10

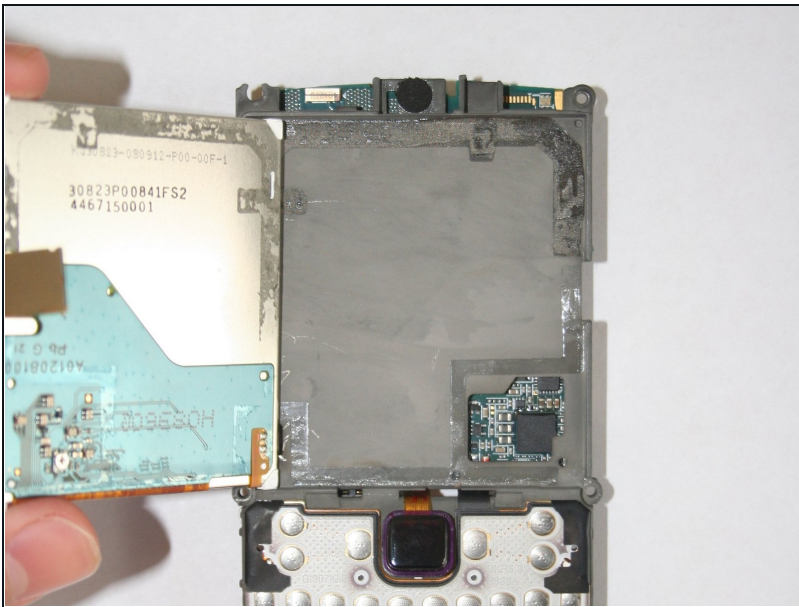


- Using an opening tool or spudger, pry under the lower left and right corners of the LCD screen.

ⓘ The LCD is held in place to the chassis with adhesive strips.

⚠ **Do not pry excessively hard.**  
You may damage the circuitry on the back of the LCD.

## Step 11



- Lift the LCD display out from phone chassis.

---

To reassemble your device, follow these instructions in reverse order.