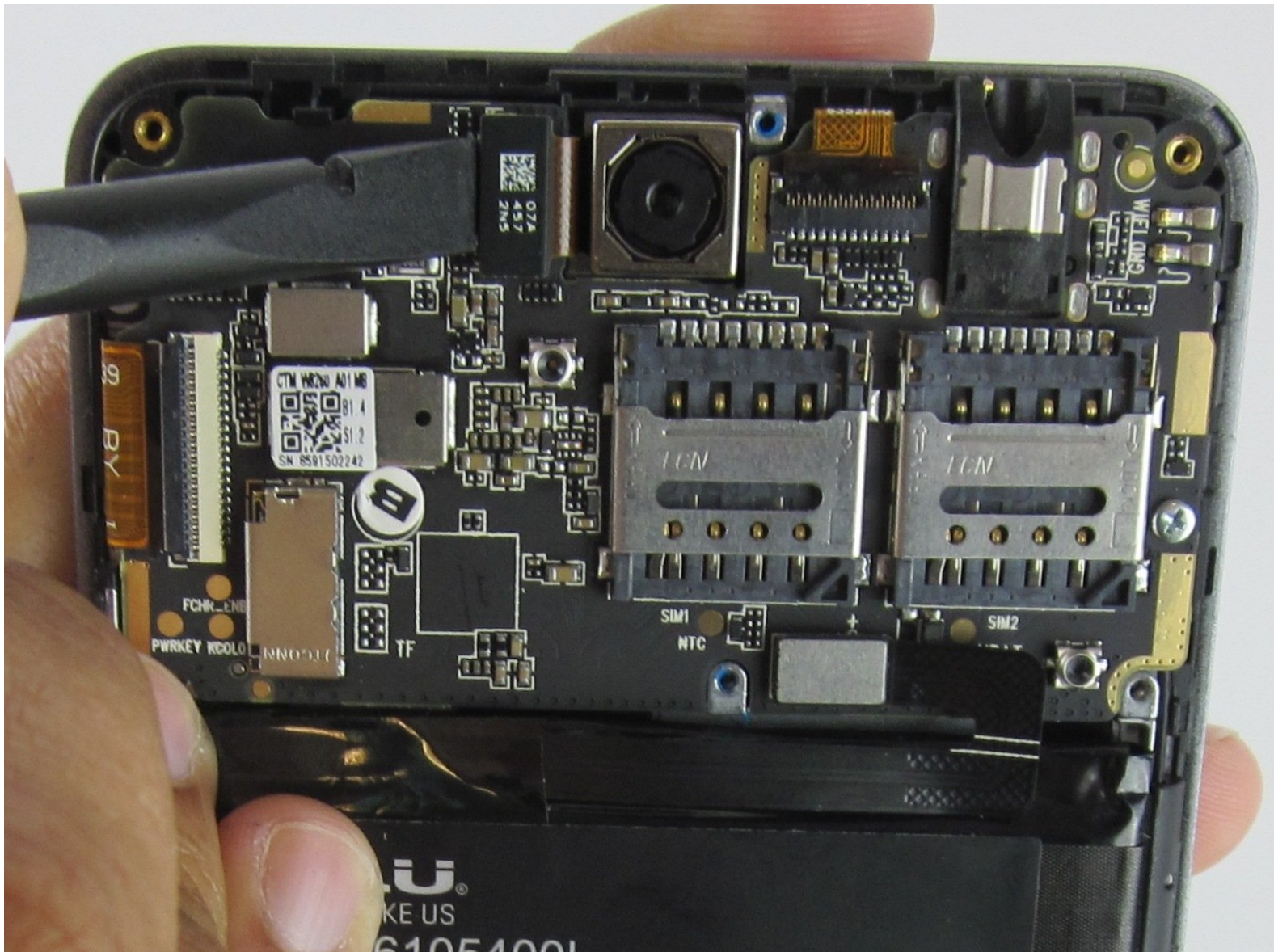




# BLU Energy X Rear Facing Camera Replacement

Use this guide to replace the rear facing camera .

Written By: Sishun Wang



---

## INTRODUCTION

The rear facing camera is located in the center of the top motherboard. To access the rear facing camera the the back of the phone will need to be opened and the top cover for the motherboard will need to be removed. The connection is a press fit.

---

### TOOLS:

- [iFixit Opening Tools](#) (1)
  - [Phillips #000 Screwdriver](#) (1)
-

## Step 1 — Rear Facing Camera



- Pry open and remove back cover with plastic spudger.

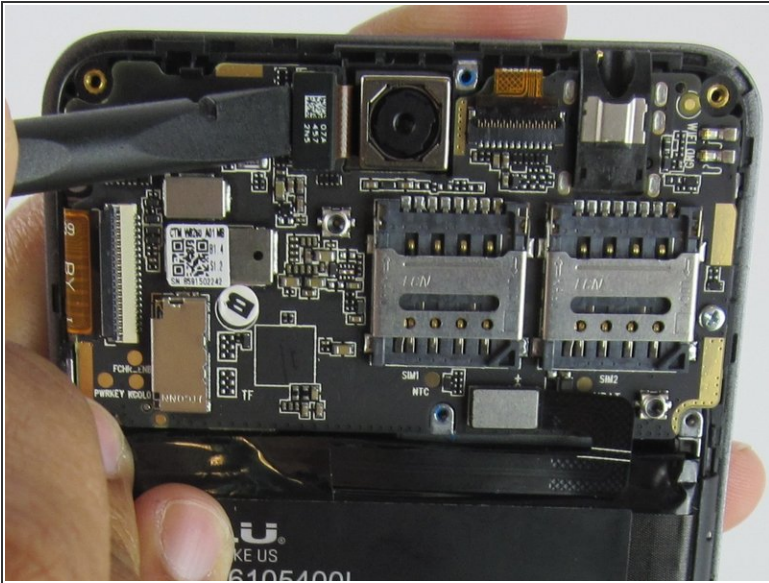
## Step 2



- Remove the seven 4 mm Phillips #000 screws from top plate
- Remove top plate



### Step 3



- Use plastic spudger to disconnect the camera from the motherboard
- Remove camera

To reassemble your device, follow these instructions in reverse order.