



# Nintendo 3DS SD Board Replacement

SD board prerequisite guide.

Written By: David Hodson



# INTRODUCTION

SD board prerequisite guide.

---

## TOOLS:

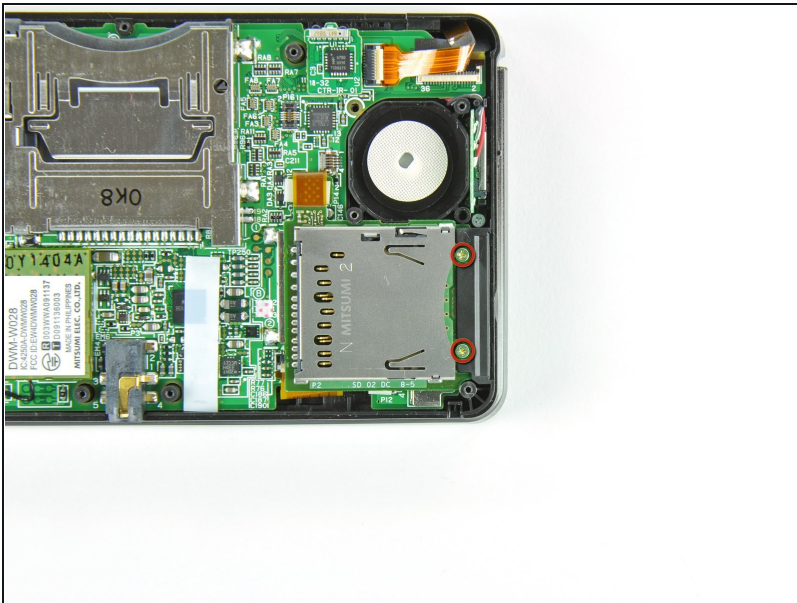
[iFixit Opening Tool](#) (1)

[Spudger](#) (1)

[Phillips #00 Screwdriver](#) (1)

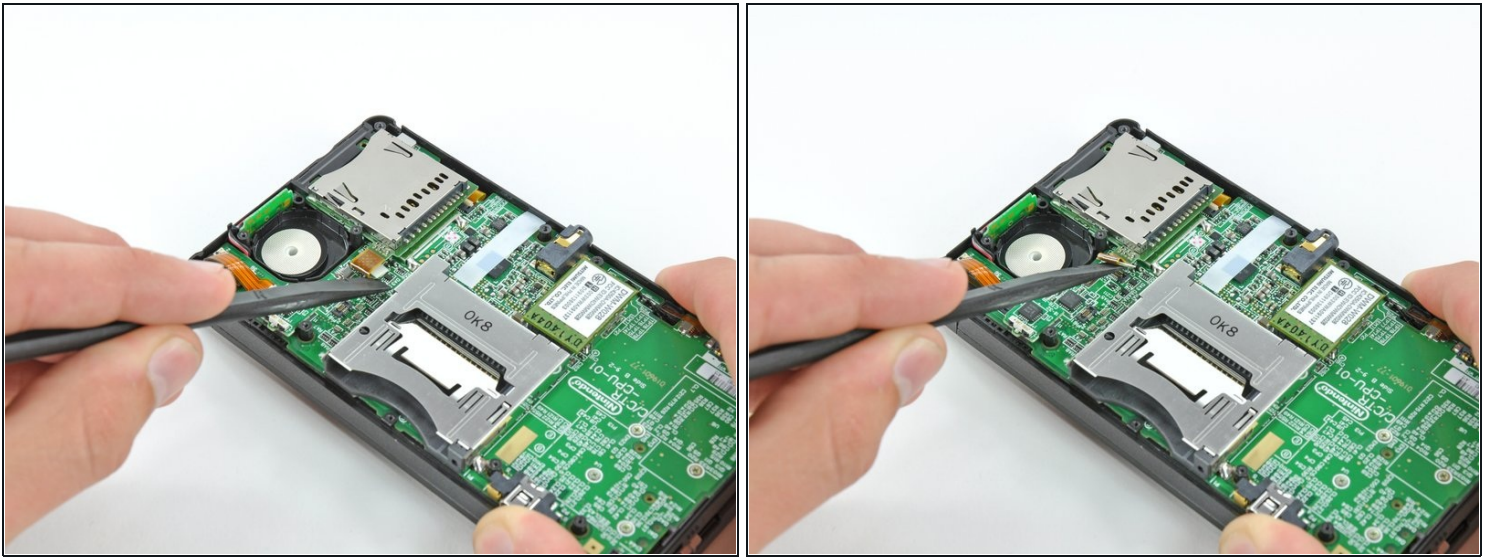
---

## Step 1 — SD Board



- Remove the two 4.5 mm Phillips screws securing the SD board to the motherboard.

## Step 2



- Use the flat end of a spudger to pry the SD board ribbon cable connector off its socket on the motherboard.

## Step 3



- Insert the flat end of a spudger between the SD board and the motherboard.
- Pry up **slowly** to loosen the SD board from the RF shield underneath it. If you pry too quickly, you may tear the shield or break its solder points.
- Run the spudger along the sides of the SD board to free it from the adhesive holding it in place.
- Once completely freed, lift the SD board straight off the motherboard.

---

To reassemble your device, follow these instructions in reverse order.