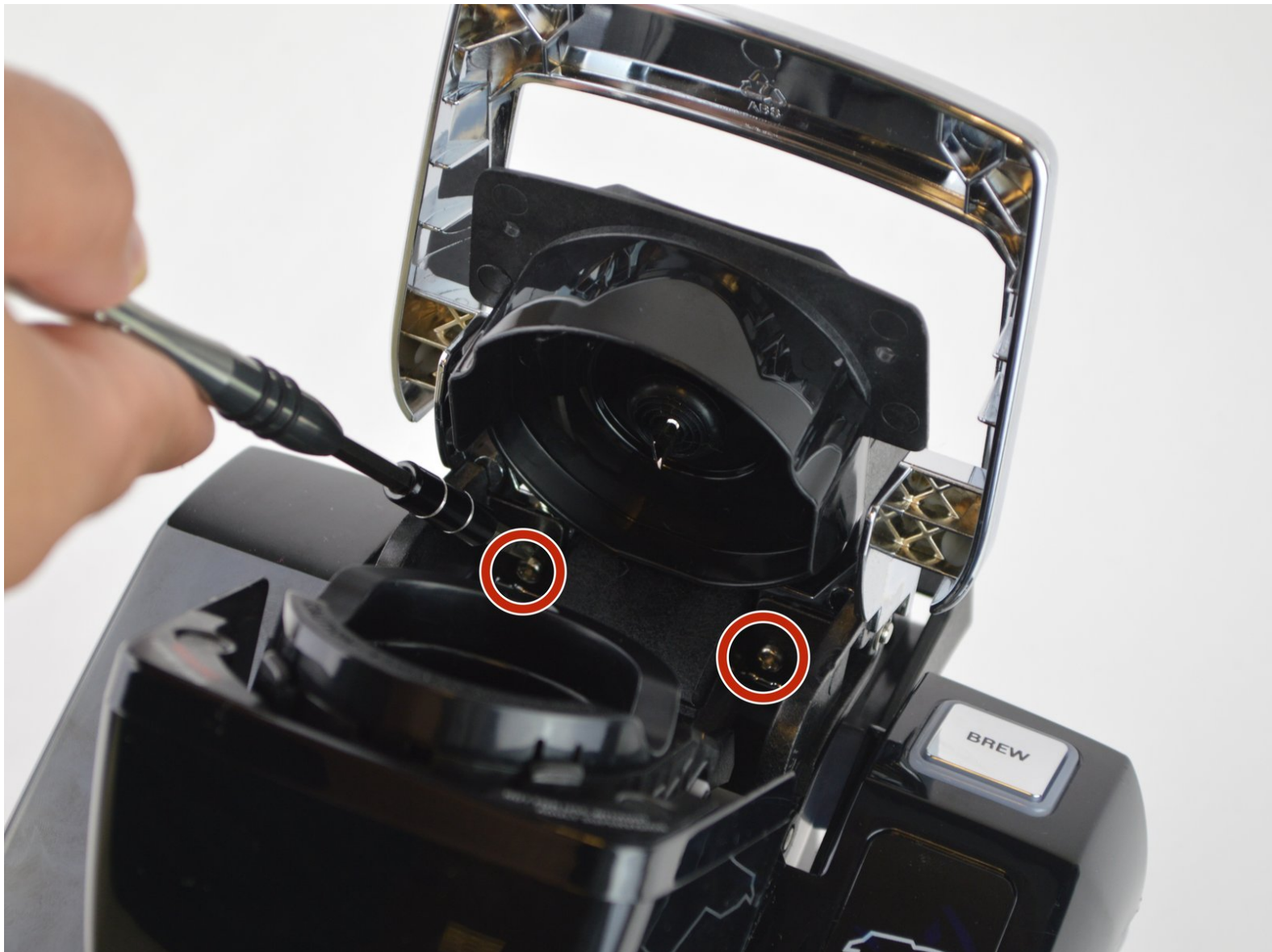




# Keurig K10 MINI PLUS Handle Replacement

This guide we will create a guide to replace the handle of the Keurig K10 Mini Plus series

Written By: Roberto Maldonado



---

# INTRODUCTION

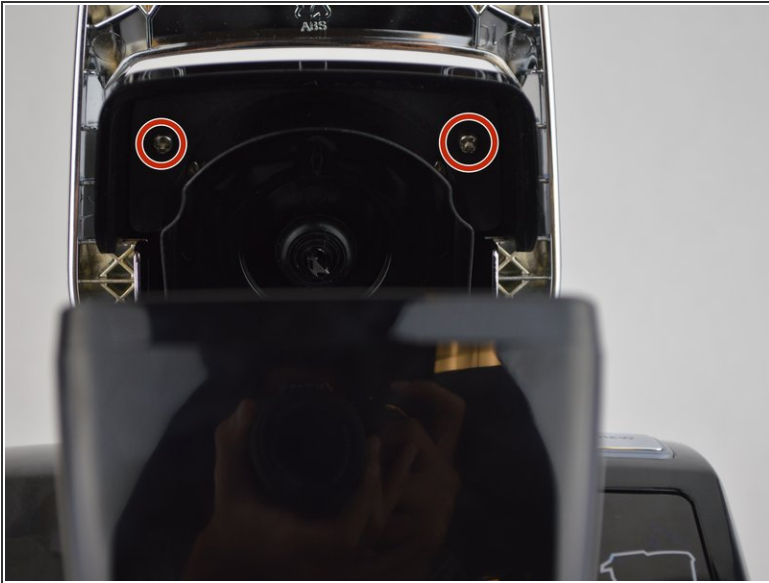
In this guide we will show you how to successfully remove the handle from the K-cup.



## TOOLS:

- [Phillips #1 Screwdriver](#) (1)
  - [iFixit Opening Tools](#) (1)
-

## Step 1 — Top Needle

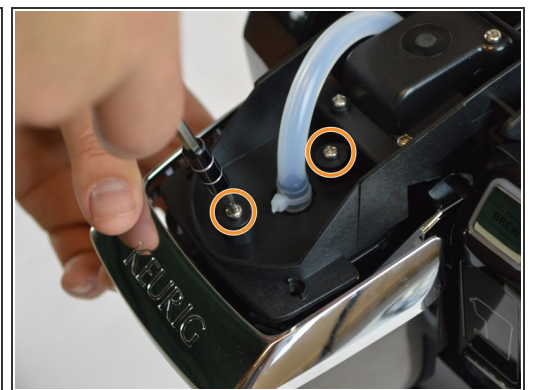
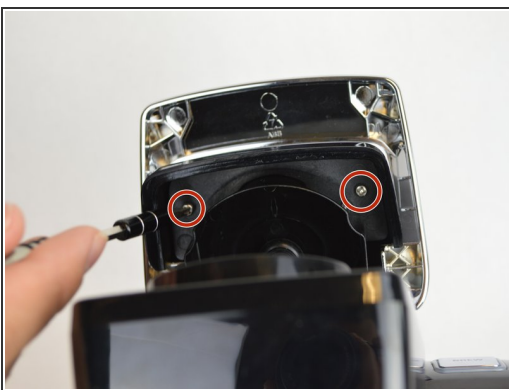


- Remove two 9 mm Phillips #1 screws.

⚠ Avoid the top needle if at all possible. The needle may cut you and/or penetrate your skin.

- The screws are located on the top of where the K-Cup would be.

## Step 2



- Once you remove the screws, the top cover should come out.

- You will then want to remove these screws which are the same size.

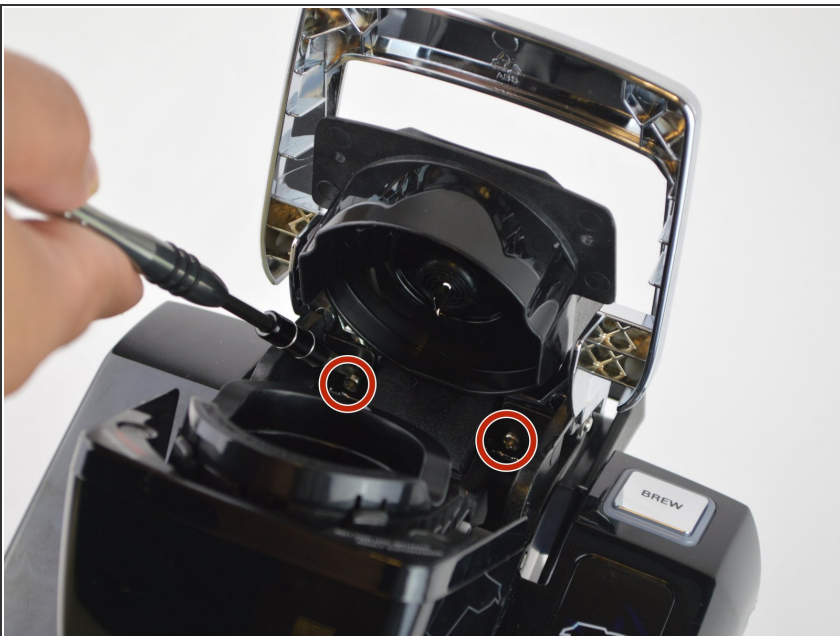
⚠ The needle is sharp, so be careful.

## Step 3



- Once you get those removed, you are going to want to pull on the hose until it pops off.
- Once the hose comes off, the needle will fall out by itself.
- ⚠ Be careful when picking up the needle as the needle is sharp.

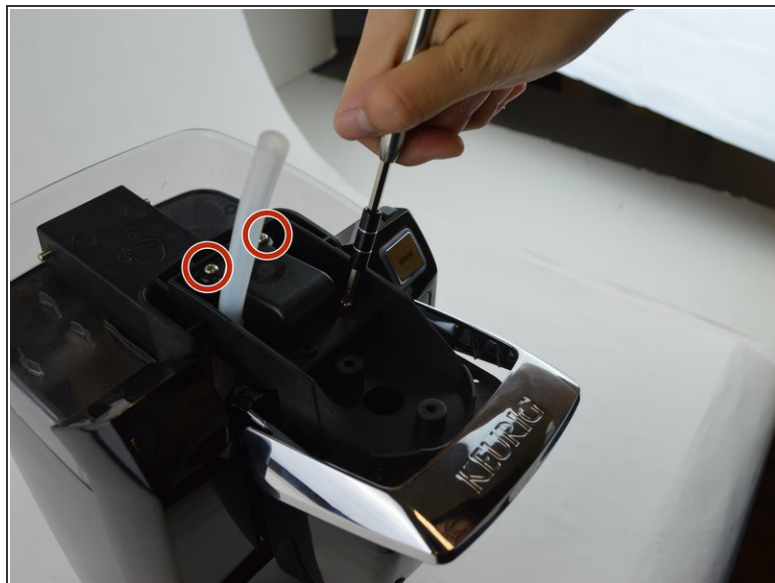
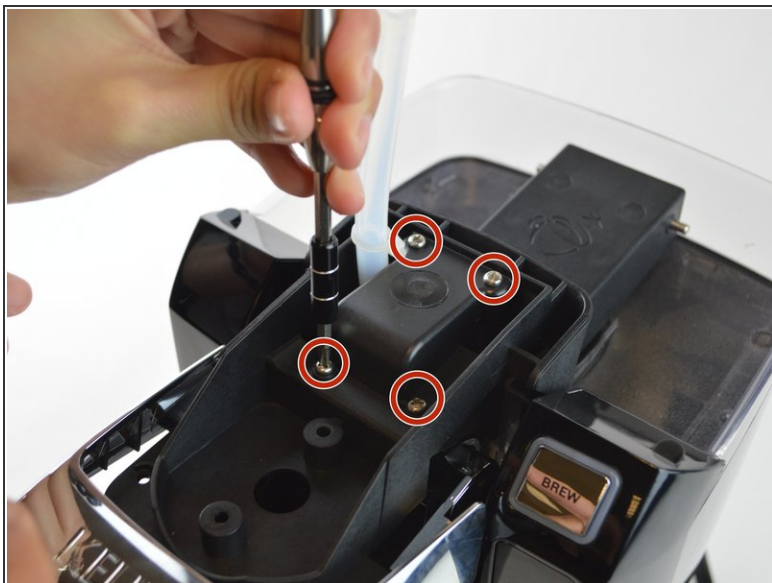
## Step 4 — Handle



- Remove the two Phillips #1 screws.
- ⚠ The top needle is intact and there, so be careful when in this area.

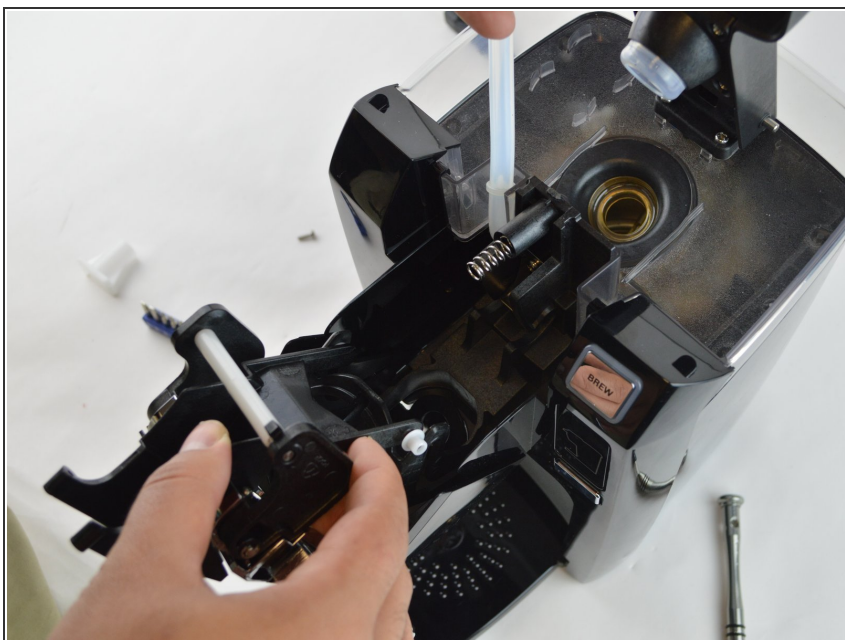


## Step 5



- Next, after the removal of the hose on the top by simply pulling it off, remove the following four Phillips #1 screws.

## Step 6



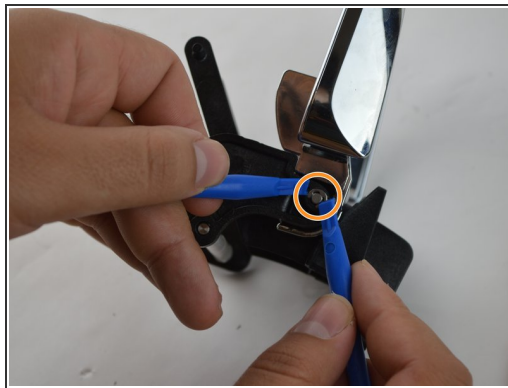
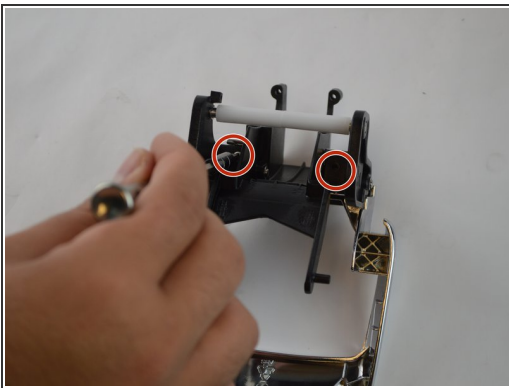
- Once you take off the screws, this part of the handle will come off.

## Step 7



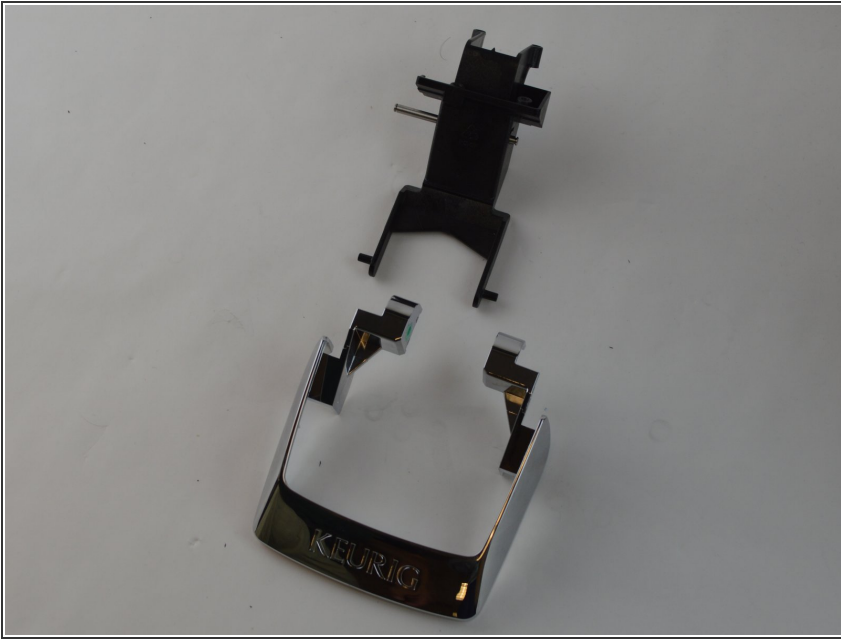
- To pull this part off, pull inwards with the these tabs located on both sides of the handle assembly.

## Step 8



- Next, remove these two Phillips #1 screws to allow the release of the actual handle from the frame.
- For the O rings, we used the plastic prying tools. Just keep in mind that you might want to hold one side of the O ring down while trying to pry off the other side with the other.
- Once you get the O rings on both sides out, you can pull the handle by pulling on each side.

## Step 9



- Once you pull both sides, the handle will come off as shown.

To reassemble your device, follow these instructions in reverse order.