



# Microsoft Surface 2 Speaker Replacement

Replace the speaker in your Microsoft Surface 2 .

Written By: EG1



## INTRODUCTION

If the speaker is not playing at its optimal level or the audio output seems to be malfunctioning , the speakers most likely need to be changed. Use this guide to replace the speakers in your Microsoft Surface 2 . Make sure to use a standard nylon spudger and not a metal one.

---

### TOOLS:

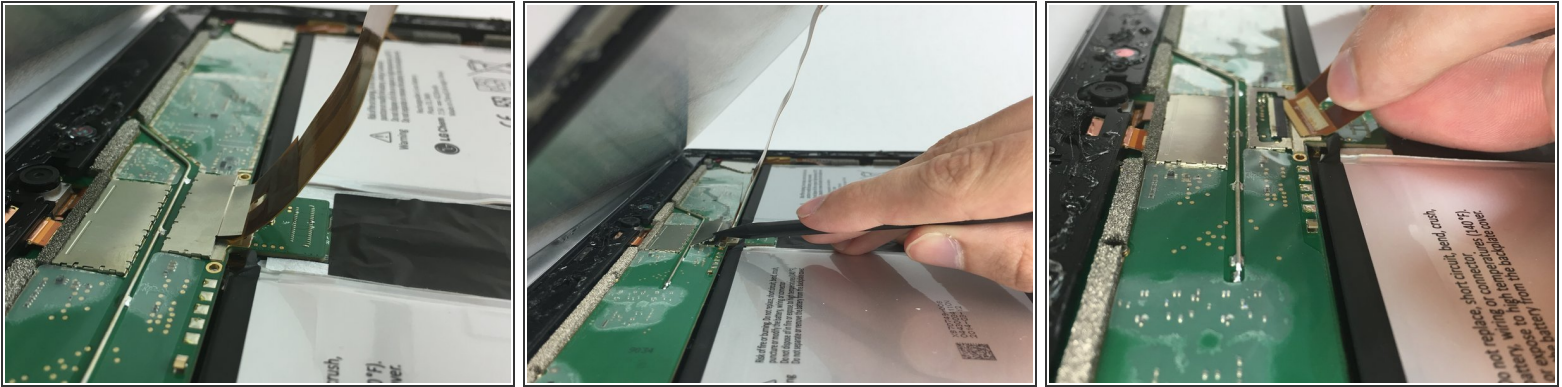
- [Heat Gun](#) (1)
  - [iOpener Kit](#) (1)
  - [Spudger](#) (1)
  - [Screwdriver](#) (1)
-

## Step 1 — Screen



- Begin by using a heat gun or the iOpener (This will take longer.) to melt the adhesive all around the outer edge of the screen.
- ⚠ Avoid holding the heat gun too close to the Microsoft Surface 2 so as to not cause any unwanted warping.
- ⚠ Avoid touching the metal end of the gun. It will be very hot and can burn you.
- Insert the opening picks just under the screen and black edging. Be sure to place them evenly on each side.
- Using the gap created by the picks, slowly pry the screen from the body of the Microsoft Surface 2 with a plastic opening tool. Pry as uniformly as possible.

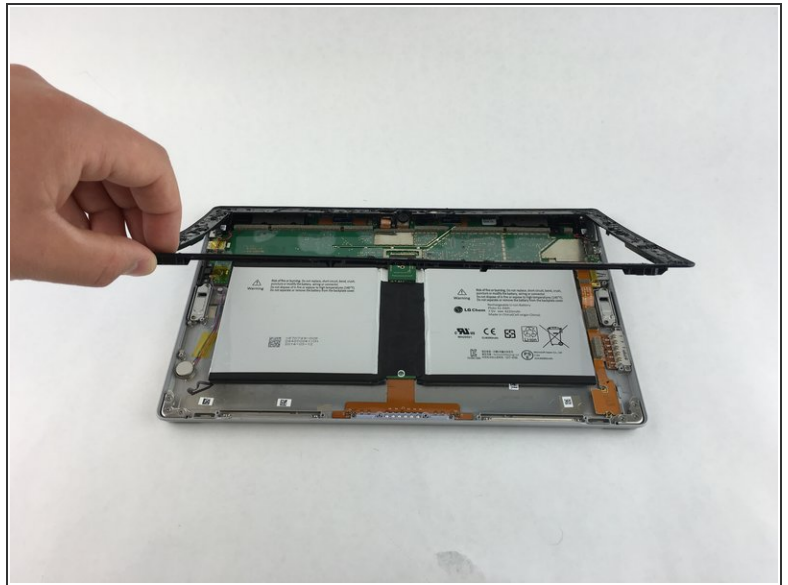
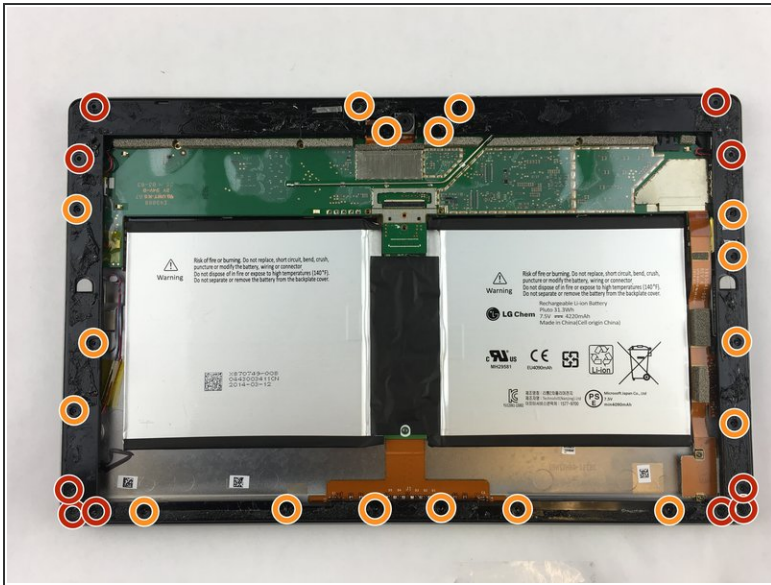
## Step 2



- ❗ Once the screen is free from the body, there will be a single ribbon cable connecting the screen to the motherboard.
- Use a plastic spudger to pry the retaining clip away from the display cable.
- ❗ The ribbon cable may be glued to the motherboard.
- Carefully pull the ribbon cable from its socket on the motherboard.



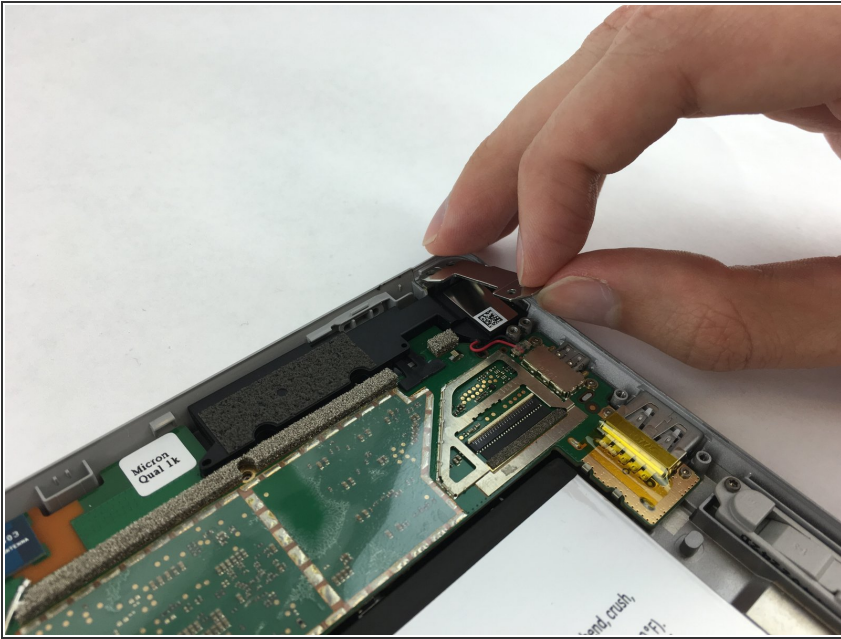
## Step 3 — Speaker



 Work close to Magnetic Project Map to avoid losing screws.

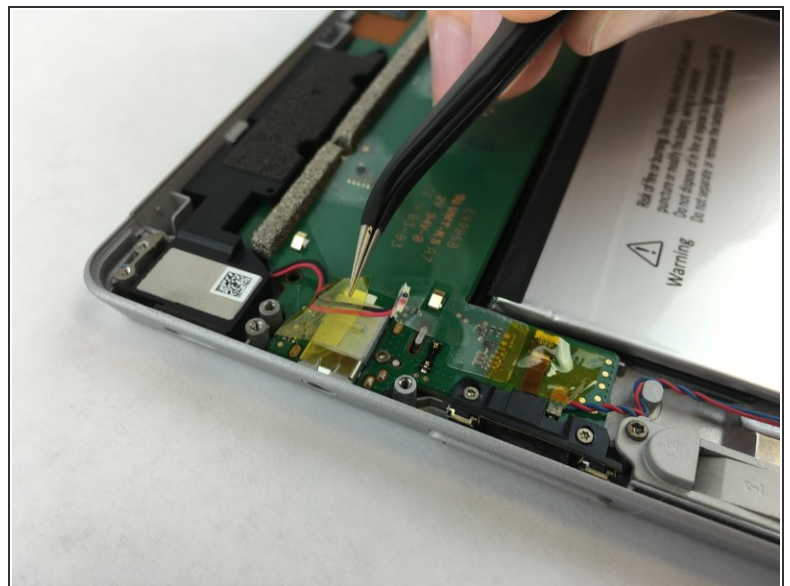
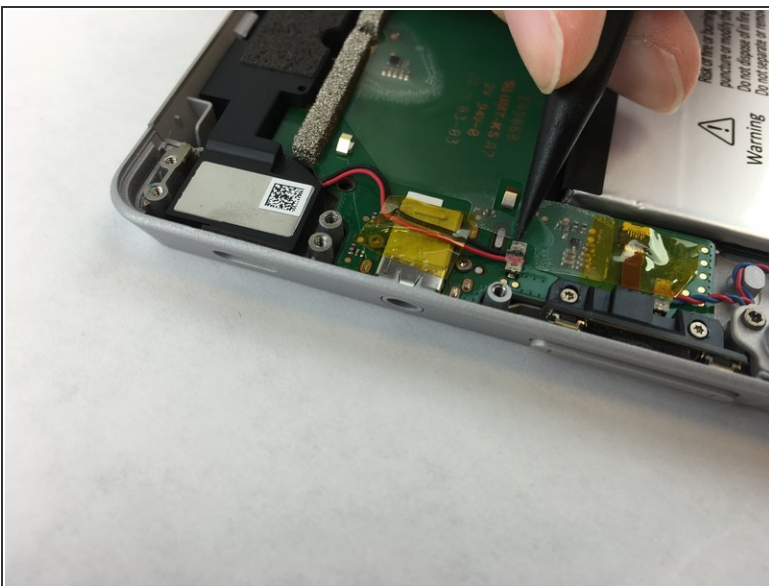
- Remove ten 3.45 mm T3 screws from the corners of the black plastic bezel.
- Remove the remaining seventeen 4.4 mm T5 screws from the perimeter of the bezel.
- Once all screws have been removed, lift and remove the bezel from the rest of the device.

## Step 4



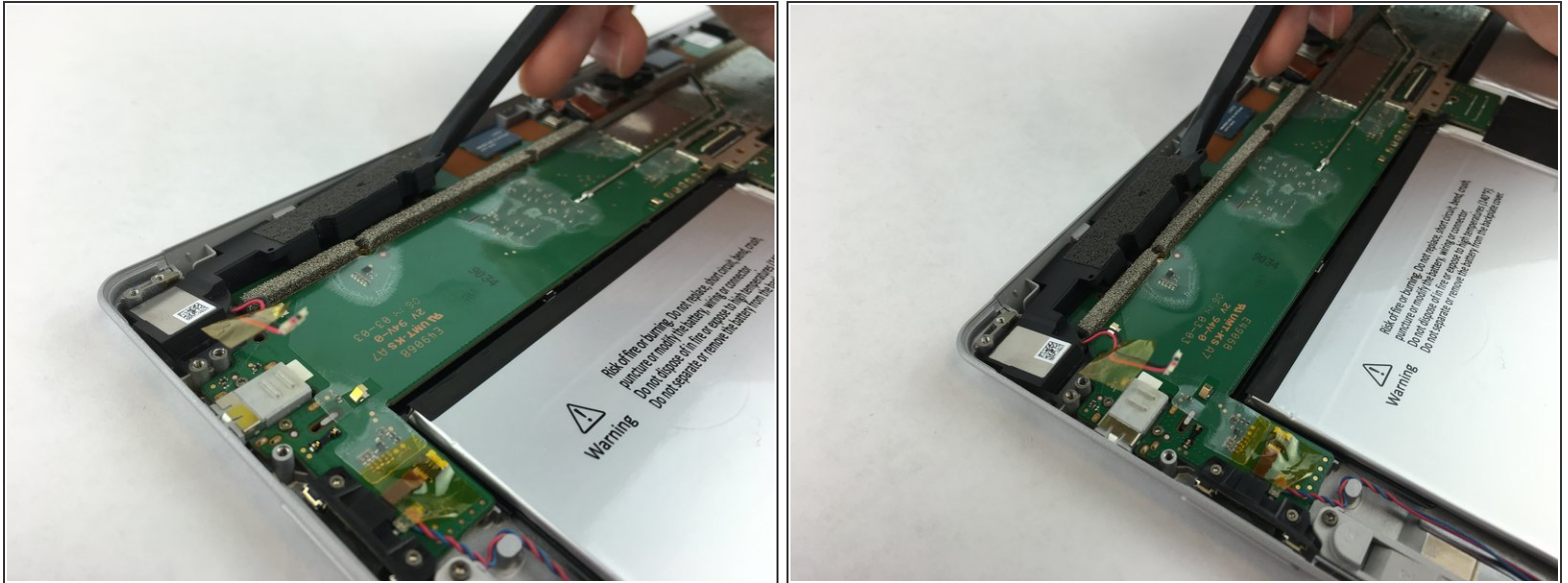
- ✦ Work close to Magnetic Project Map to avoid losing screws.
- Using a T3 screwdriver, unscrew and remove the 3.5mm screws holding down the silver plates located at the corners of the device.

## Step 5



- Using tweezers, remove the cable connecting the speaker to the motherboard.
- Peel up the tiny strip of yellow tape securing the cable to the motherboard.

## Step 6



- Lifting from the inmost end of the speaker, use a spudger to carefully pry the speaker from the motherboard.

To reassemble your device, follow these instructions in reverse order.