



Sony SRS-BTX500 Speaker Replacement

This is a step-by-step guide for replacing the 3 speakers.

Written By: Sydney Legeer



INTRODUCTION

This guide will teach you how to remove the screws and panel that cover the speaker. Additionally, it will instruct you how to replace the speakers in the device.



TOOLS:

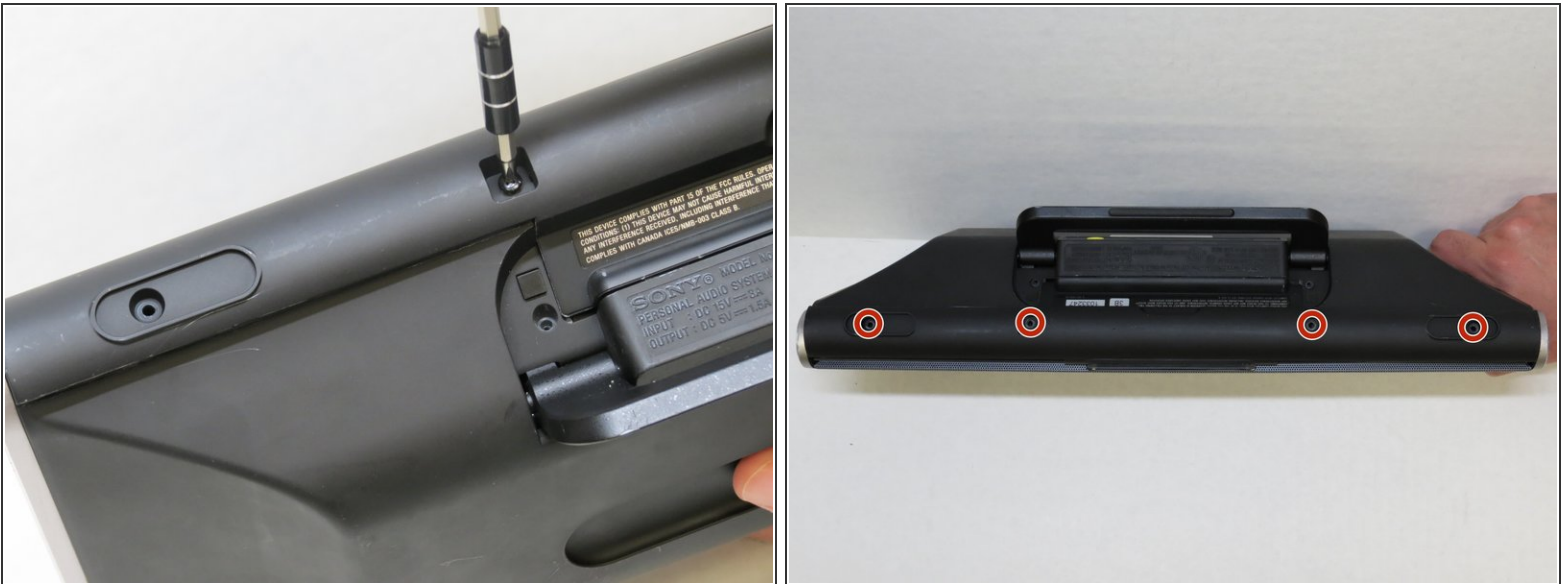
- [Phillips #1 Screwdriver](#) (1)
 - [iFixit Opening Tools](#) (1)
-

Step 1 — Battery



- Locate the four rubber grips on the bottom of the speaker. Use the plastic opening tool to remove the grips, exposing the underlying screws.

Step 2



- Using a Phillips #1 screwdriver, remove the four 5mm screws that were underneath the four rubber grips.

Step 3



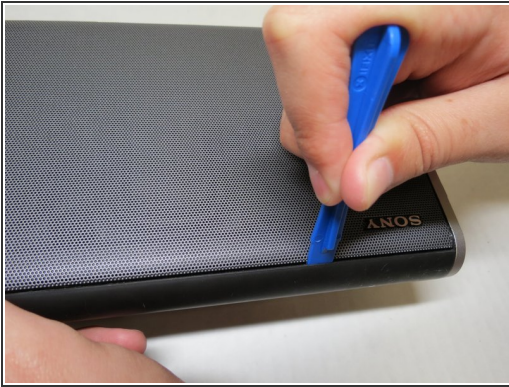
- Use the plastic opening tool to run along the outside edges of the speaker. Pry along the seams until you can remove the side panel of the speaker, exposing the battery.

Step 4



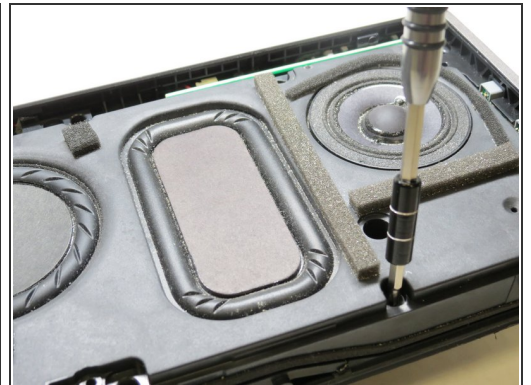
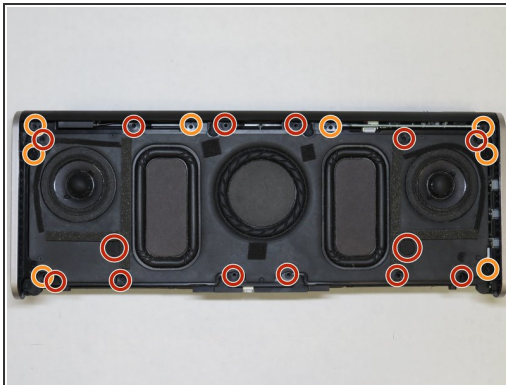
- Use the plastic opening tool to remove the battery from casing.
- Unclasp the battery from the speaker. Remove and replace.

Step 5 — Motherboard



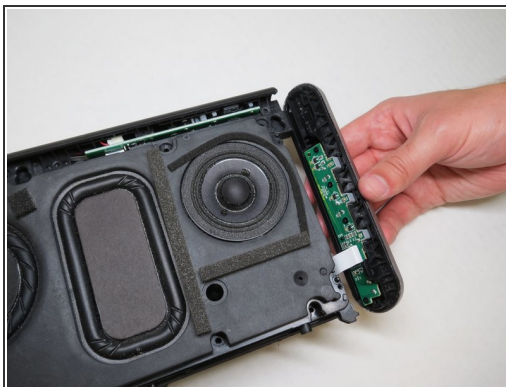
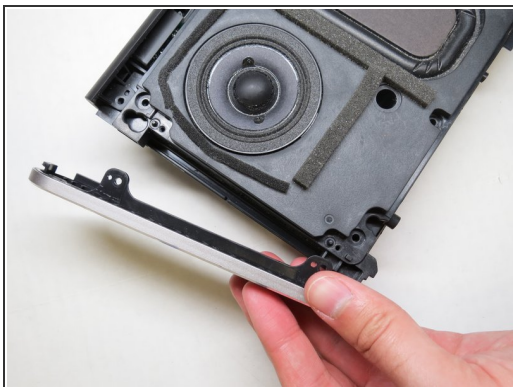
- With the front of the speaker facing you, run the plastic opening tool along the bottom of the speaker. Then push the face of the speaker at both ends before lifting it off.

Step 6



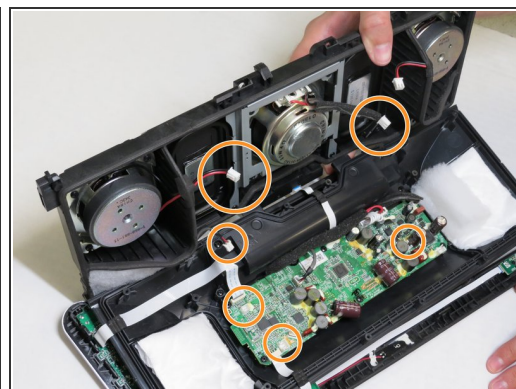
- Remove the two covers on the left and right with the small plastic opening tool to expose hidden screws.
- Use a Phillips #1 screwdriver to remove the 14 indicated screws size 7mm.
- Use a Phillips #1 screwdriver to remove the 8 indicated screws size 5mm.

Step 7



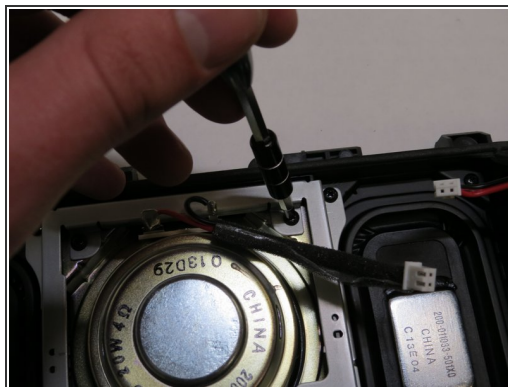
- Lift off the casing on the left, right, and top of the speaker.

Step 8



- Pull apart the speaker from the top. Unplug the indicated exposed wire that connects the speakers and the motherboard.
- After the first wire is disconnected, separate the other connecting wires.

Step 9 — Speaker



- Locate the broken speaker, and using a Philips #1 screwdriver, remove the four 7 mm screws to release the speaker from its position.
- If replacing the center speaker, four additional 7 mm screws must be removed as indicated.
- Replace it with the new speaker you have in your possession.

To reassemble your device, follow these instructions in reverse order.