



Black and Decker LDX 120C Outer Case Replacement

This guide is a prerequisite to the other guides. It shows how to open up the drill in order to reach the interior components.

Written By: jeffrey zakka



03/01/2016

INTRODUCTION

To be able to get into the components inside the drill we will have to open the drill by undoing thirteen total screws, and this guide will illustrate this.



TOOLS:

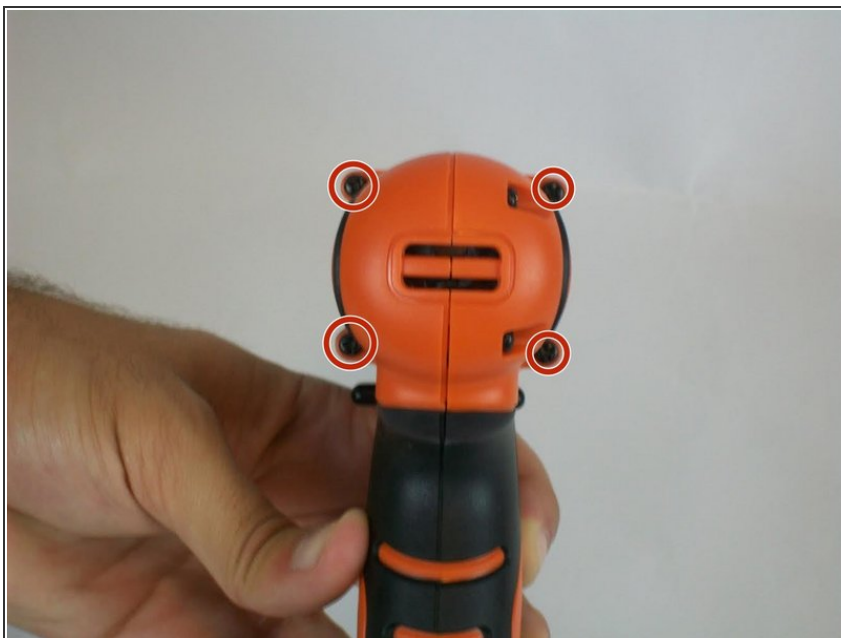
- [iFixit Pro Tech Toolkit](#) (1)
 - [Phillips #1 Screwdriver](#) (1)
-

Step 1 — Outer Case



- i For this guide we will need to use a 1.0 mm phillips #1 screw.
- i There are a total of thirteen screws that need to be removed in order to open the drill and access the interior components.

Step 2



- Remove the four screws on the back top side of the drill.

Step 3



- Remove the four screws that connect the chuck to the drill.

Step 4



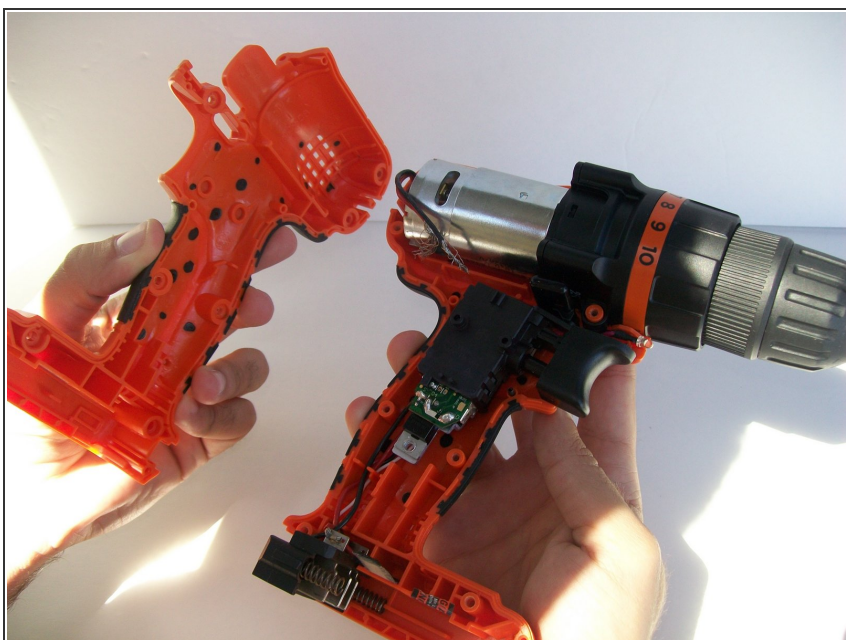
- Remove the five screws on the front side of the drill.

Step 5



- Gently grab both sides of the drill casing, and separate both sides from each other.

Step 6



- At this point you should be able to separate both as illustrated.

Step 7



- i** Now all the components of the drill are visible and can be accessed.

To reassemble your device, follow these instructions in reverse order.