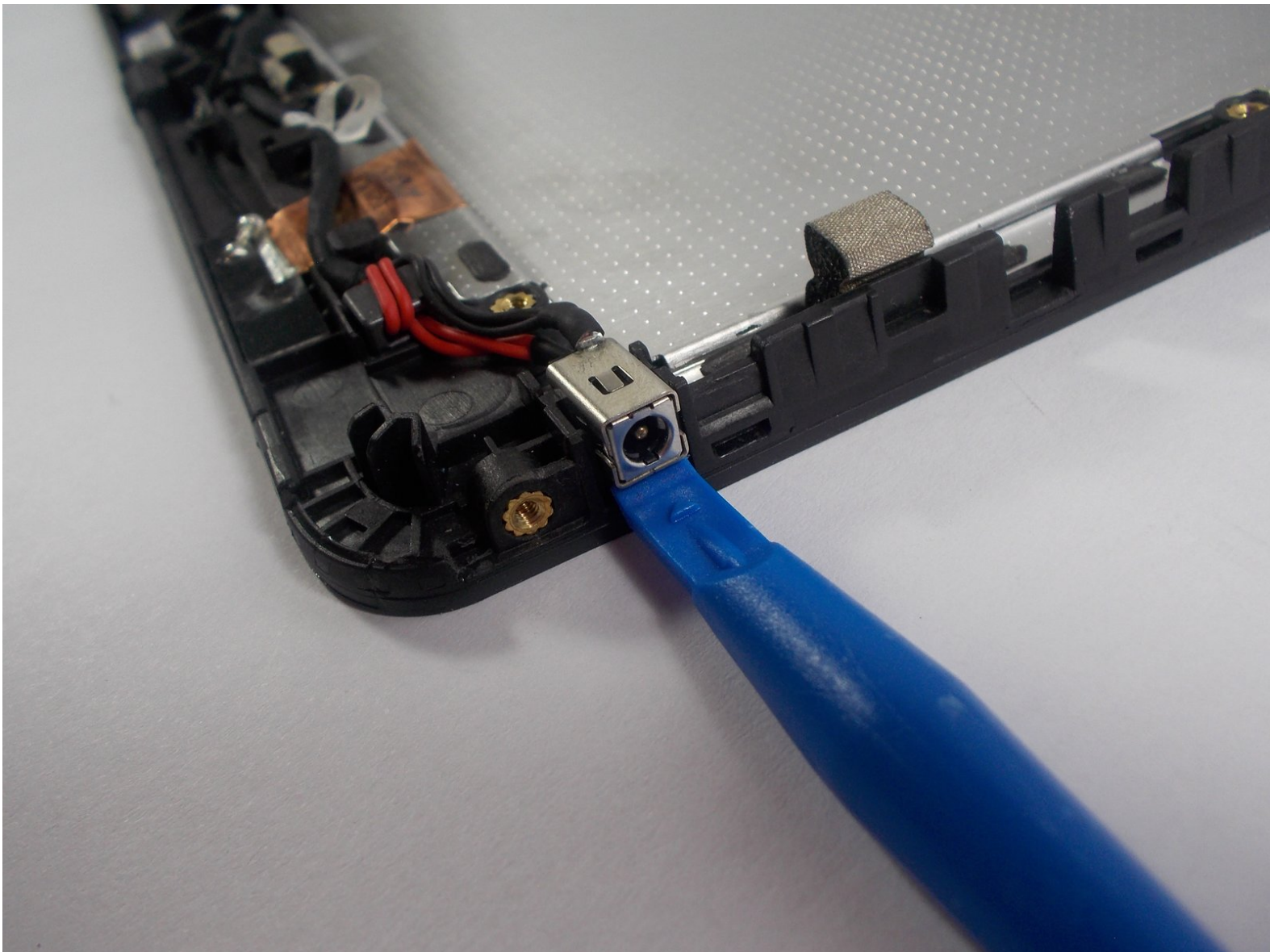




Acer Iconia Tab A200 DC Power Jack Component Replacement

This guide will show you how to replace the DC power jack component used to charge the Acer Iconia Tab A200.

Written By: Jaimie Payne



INTRODUCTION

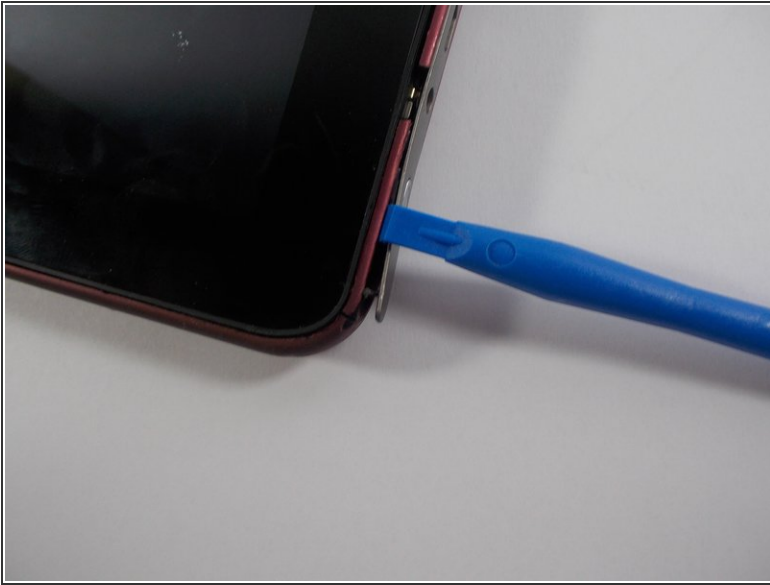
The DC power jack component is used to charge the Acer tablet. The component is approximately 8 inches in length and connects to the motherboard to supply power to the device.



TOOLS:

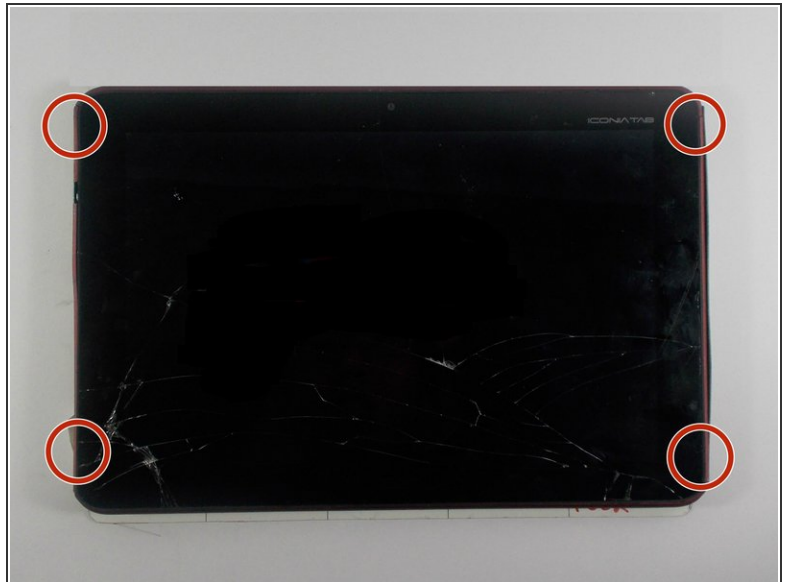
- [Phillips #00 Screwdriver](#) (1)
 - [iFixit Opening Tools](#) (1)
-

Step 1 — Battery



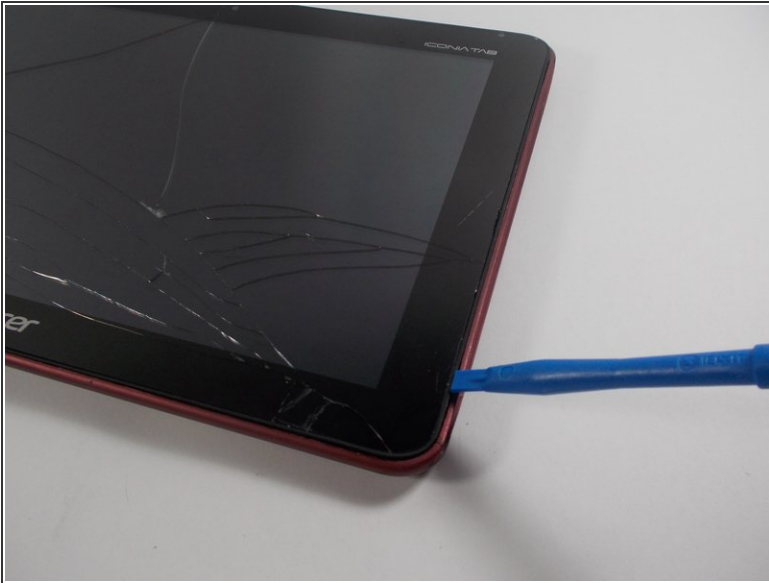
- With the plastic opening tool pry open the grey plastic siding on both sides of the tablet.

Step 2



- Using a Phillips #00 screwdriver remove the 4.0 mm screws on the sides of the tablet.
- ⓘ There are two screws on each side of the tablet that need to be removed before the back casing can be removed.

Step 3



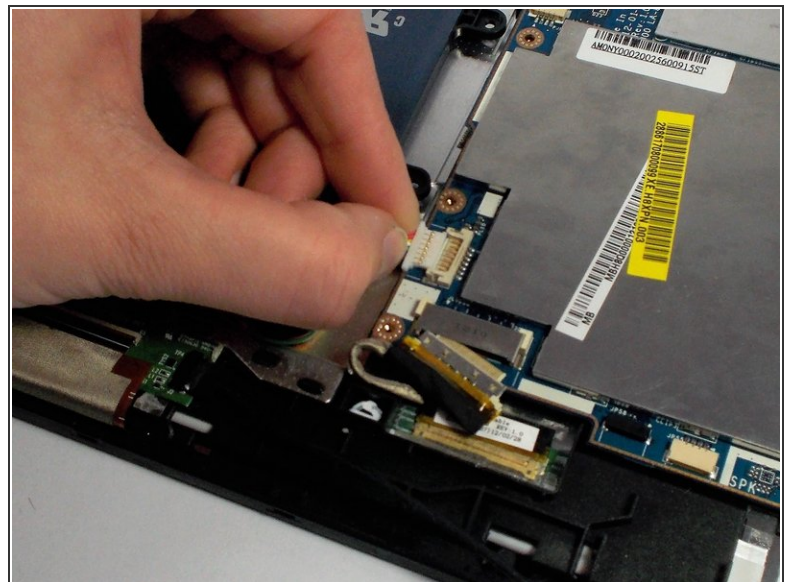
- Once the 4 screws have been removed use the plastic opening tool to pry open the device on the side of the device.
 - ⚠ Be careful prying on the sides where you removed the screw as the plastic casing is not very strong and may break.
- After prying open the case with the plastic opening tool carefully remove the case from the device and place the device face down on its screen.

Step 4



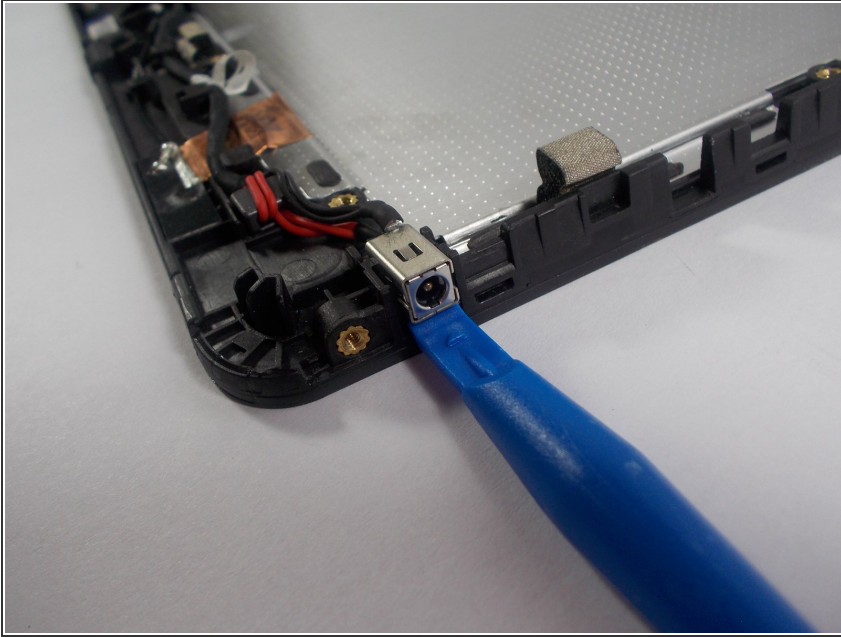
- Using a Phillips #00 screwdriver remove the 4.0 mm screws holding the battery in place.

Step 5



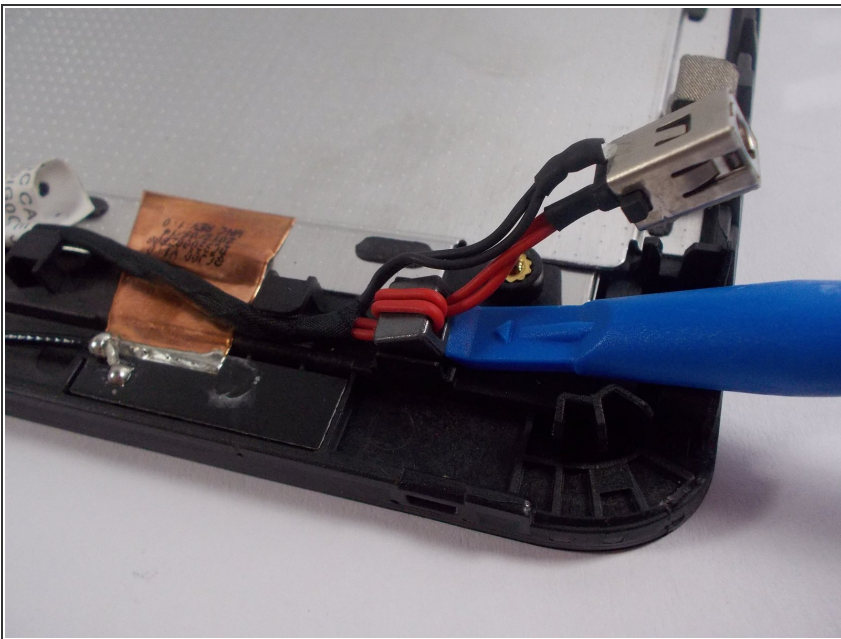
- Lift the battery out of the device, and disconnect the cable attached to the motherboard by pulling it out to the side not lifting it up.

Step 6 — DC Power Jack Component



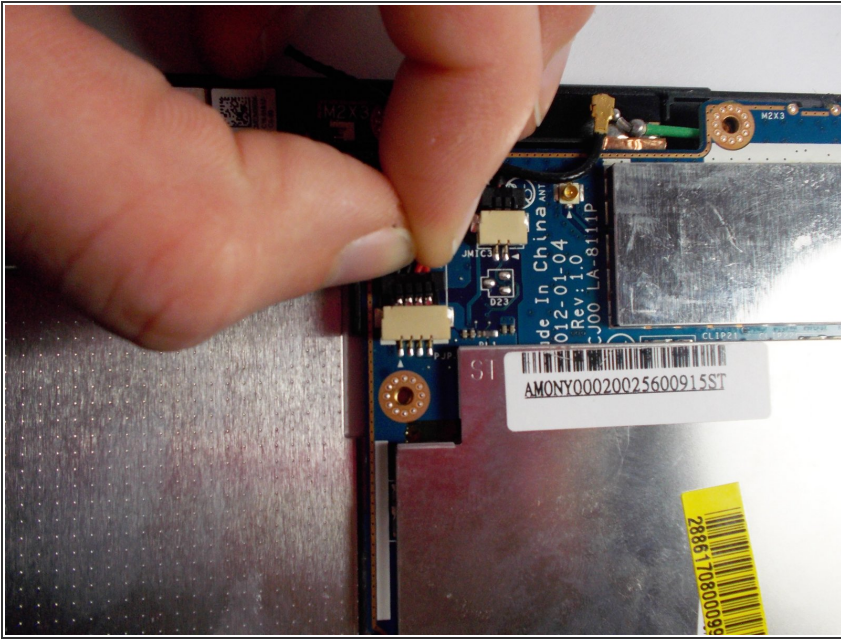
- Using the plastic opening tool gently lift up the charging component out of its slot in the case.

Step 7



- Continue to lift up the cord until it is free from the case and only attached to the motherboard.
- ⓘ You may need to continue using the plastic opening tool to lift the cord out of the case due to limited hand space.

Step 8



- Disconnect the power component from the motherboard by pulling it out horizontally. Do not pull up on the cord only pull out

To reassemble your device, follow these instructions in reverse order.