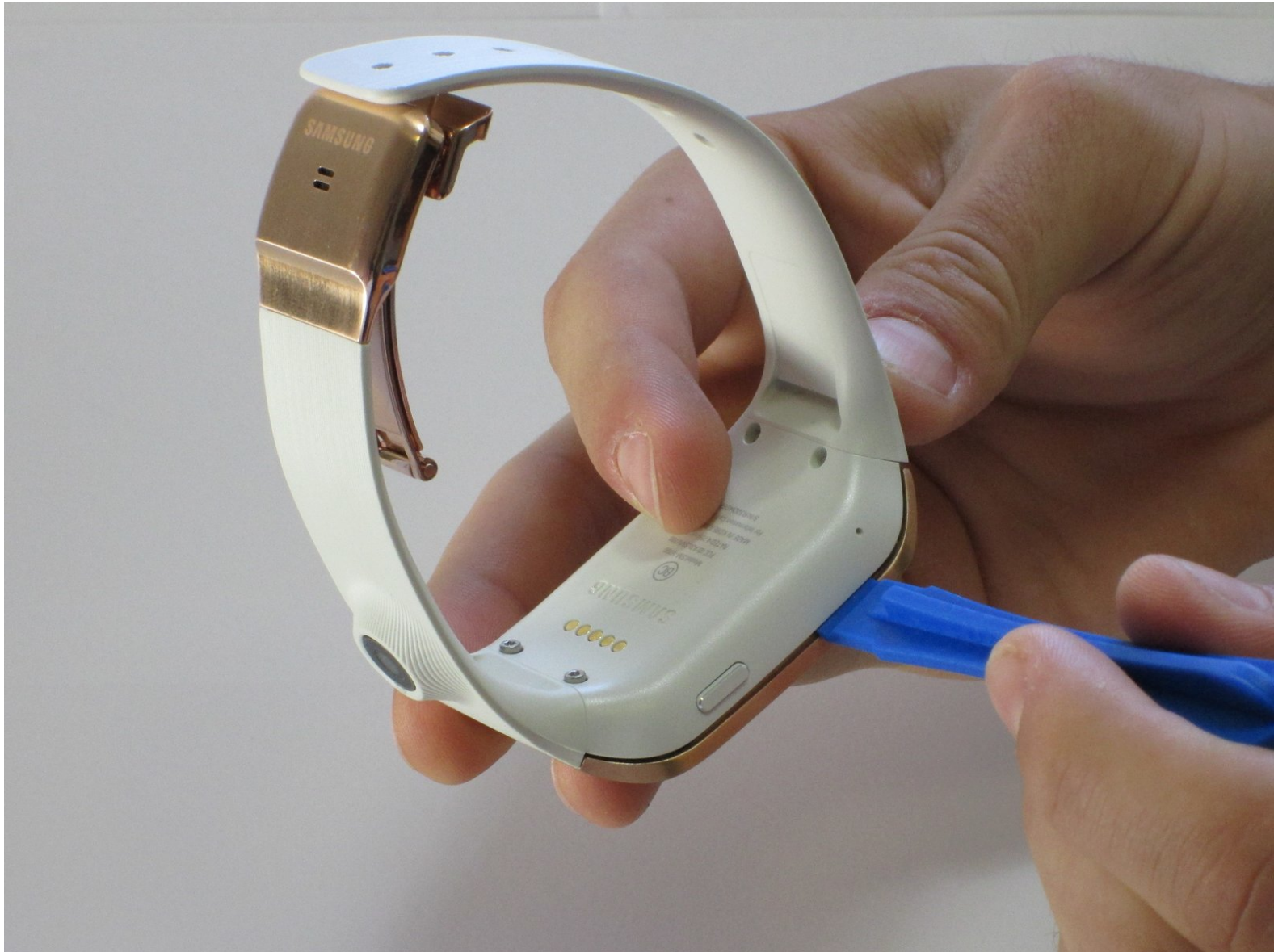




# Samsung Galaxy Gear Display Housing Replacement

This guide will cover how to remove the display housing from the device.

Written By: Dalt Lasell



---

## INTRODUCTION

To access the interior of the device, the housing that contains the display needs to be removed. This guide will act as a prerequisite for all other guides.

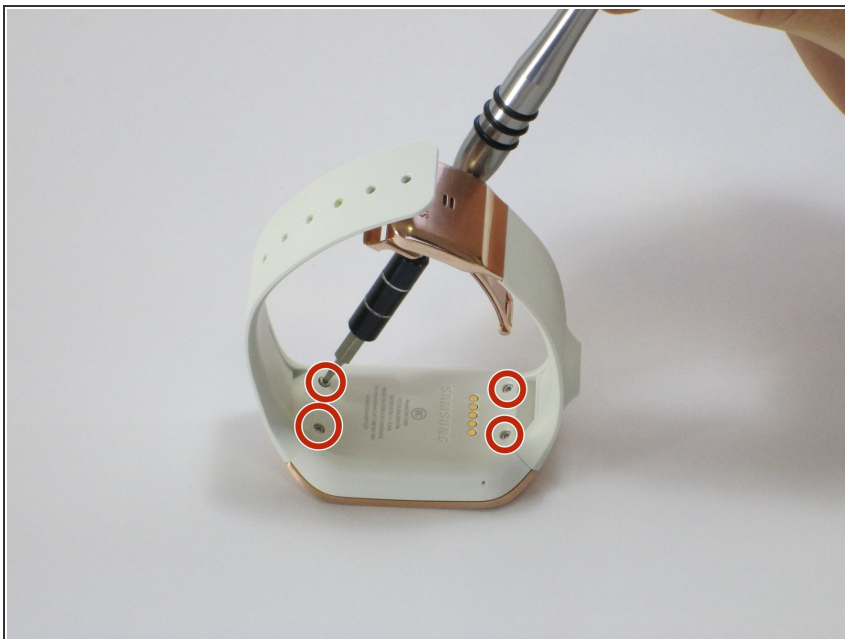
---



### TOOLS:

- [iFixit Opening Tools](#) (1)
  - [T5 Torx Screwdriver](#) (1)
-

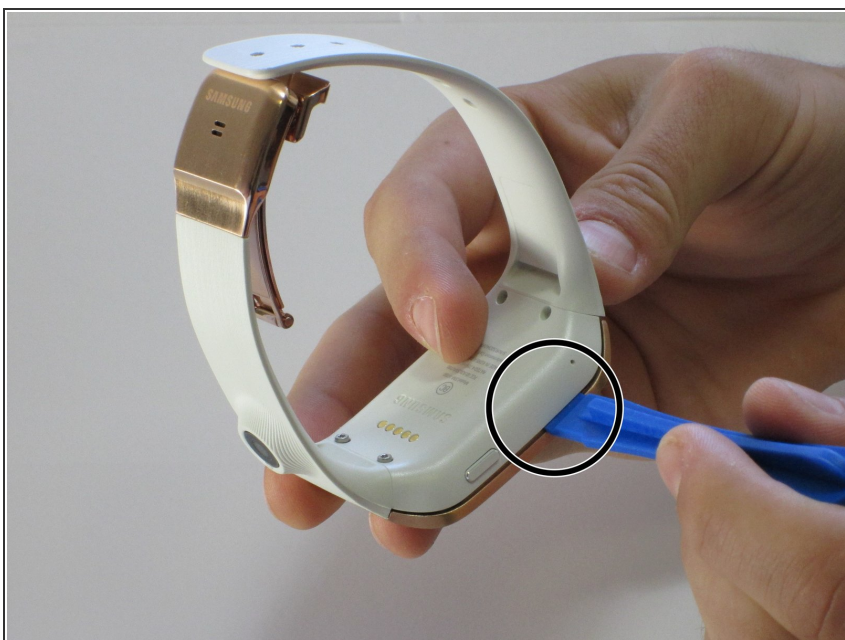
## Step 1 — Display Housing



- Use a T5 Torx screwdriver to remove the **four** 4.0 mm screws on the back of the device.

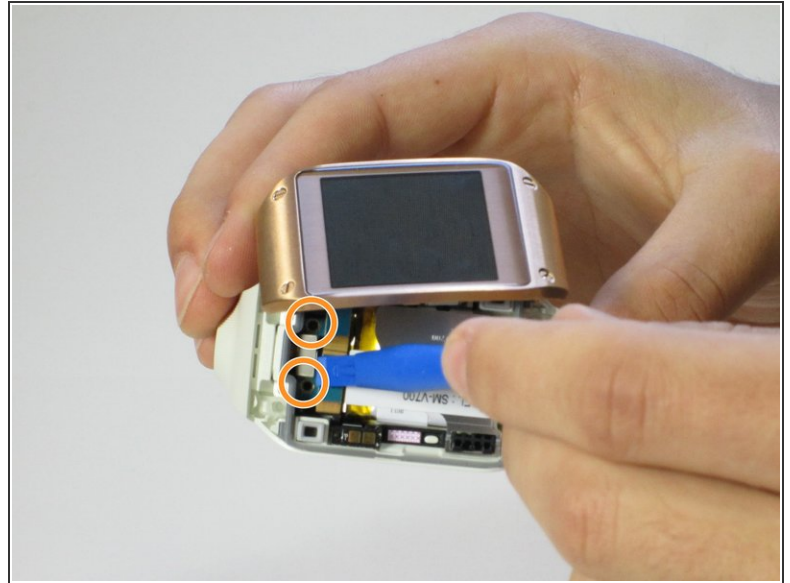
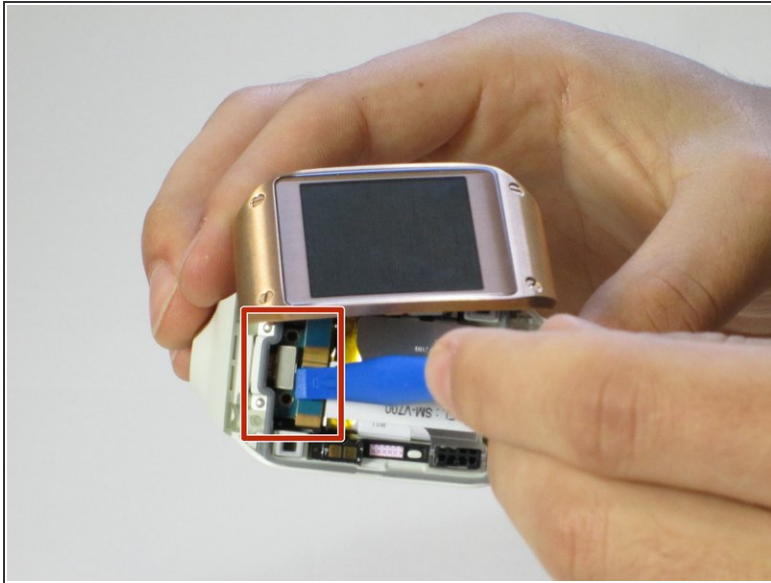
⚠ Be sure your device is turned off.

## Step 2



- Use a plastic opening tool to separate the display housing from the device.
- ⓘ To ensure you don't damage your device, insert the opening tool and slide it the entire length of the gap on both sides of the device.

### Step 3



- Gently pry back the metal flap on top of the connector.
- Locate the two 2.0 mm black screws and unscrew using a Phillips PH00 bit. The connector will detach from the device.

To reassemble your device, follow these instructions in reverse order.