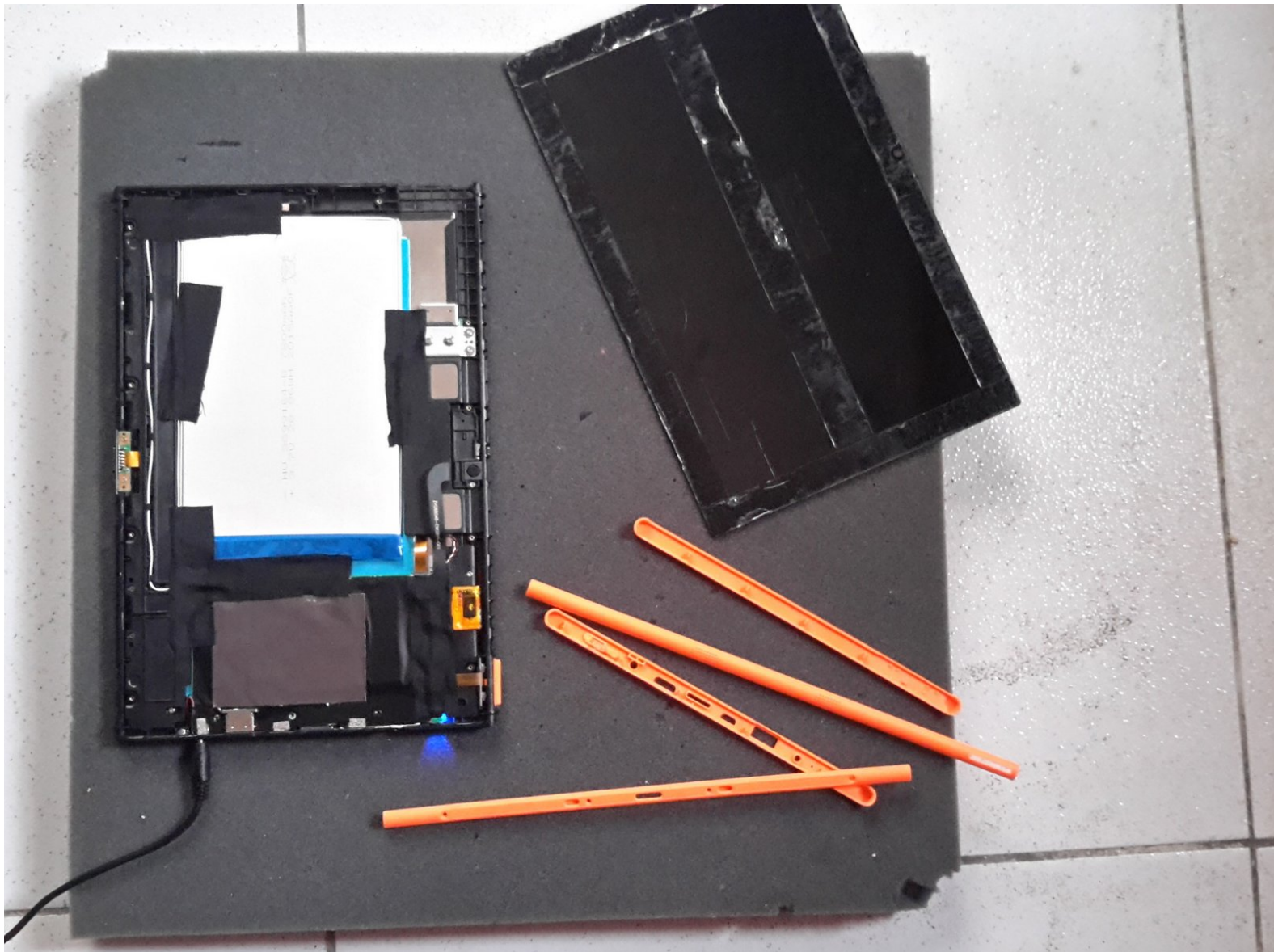




Irulu walknbook Windows 10 tablet battery Replacement

this guide is to show you how to open up your irulu walknbook windows 10 tablet.

Written By: Dili



INTRODUCTION

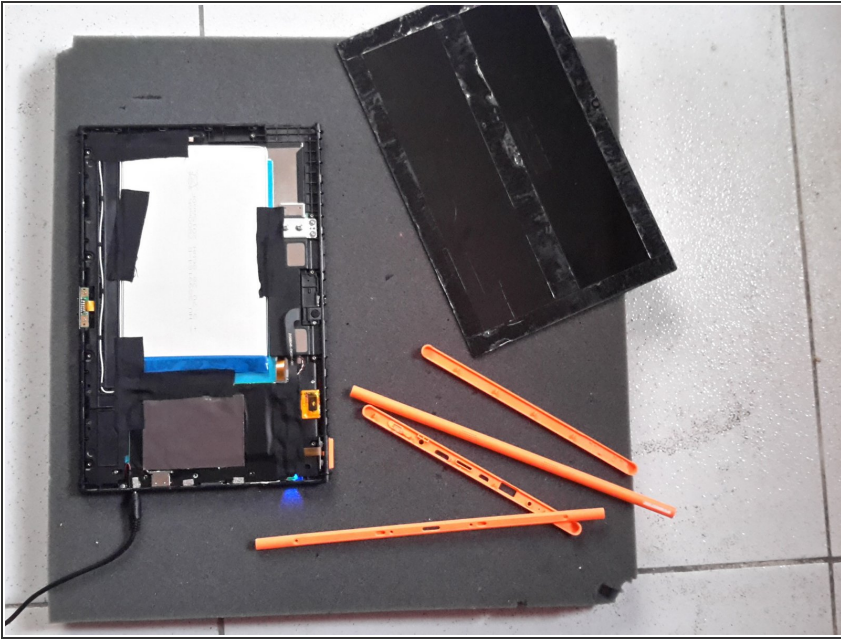
this guide is to show you how to open up your irulu walknbook windows 10 tablet.



TOOLS:

- [Essential Electronics Toolkit](#) (1)
-

Step 1 — battery



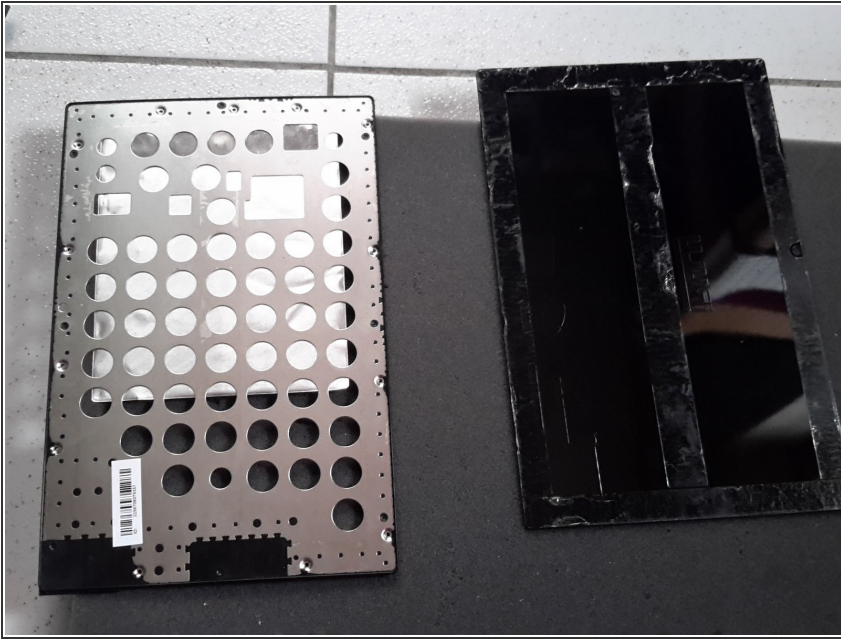
- this is what you should end up like with the tab

Step 2



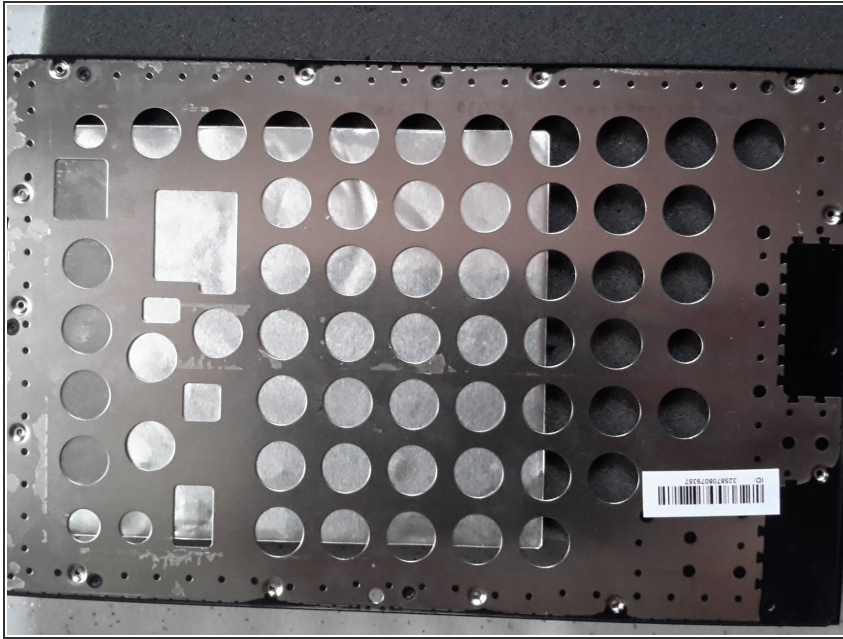
- first remove the orange (or other colour) bezels from the side of the tab. the all have a small hole grip.

Step 3



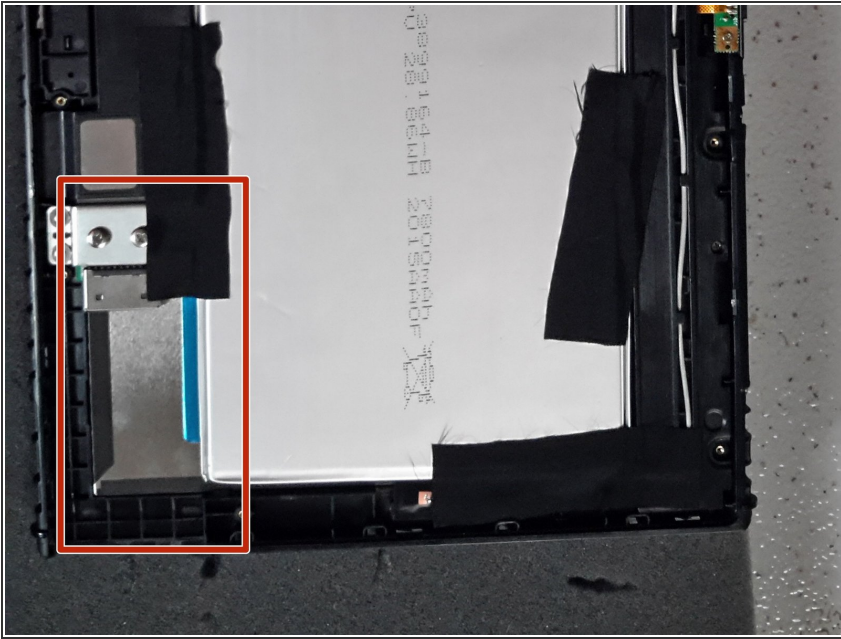
- on the back cover there is a glass cover that covers up the screws. be carefull when removing it because it might break. use small like credit cards to seperate it but still be very carefull.

Step 4



- so the back cover separates in to two parts. after removing the glass part the screws are visible. remove all of them. the back cover can be removed very easily.

Step 5



- you then end up with all the rest of the internal parts visible. now you can replace the battery or the display. there is also a 3g port slot but i haven't tried it out yet. let me know if this worked for you.

To reassemble your device, follow these instructions in reverse order.