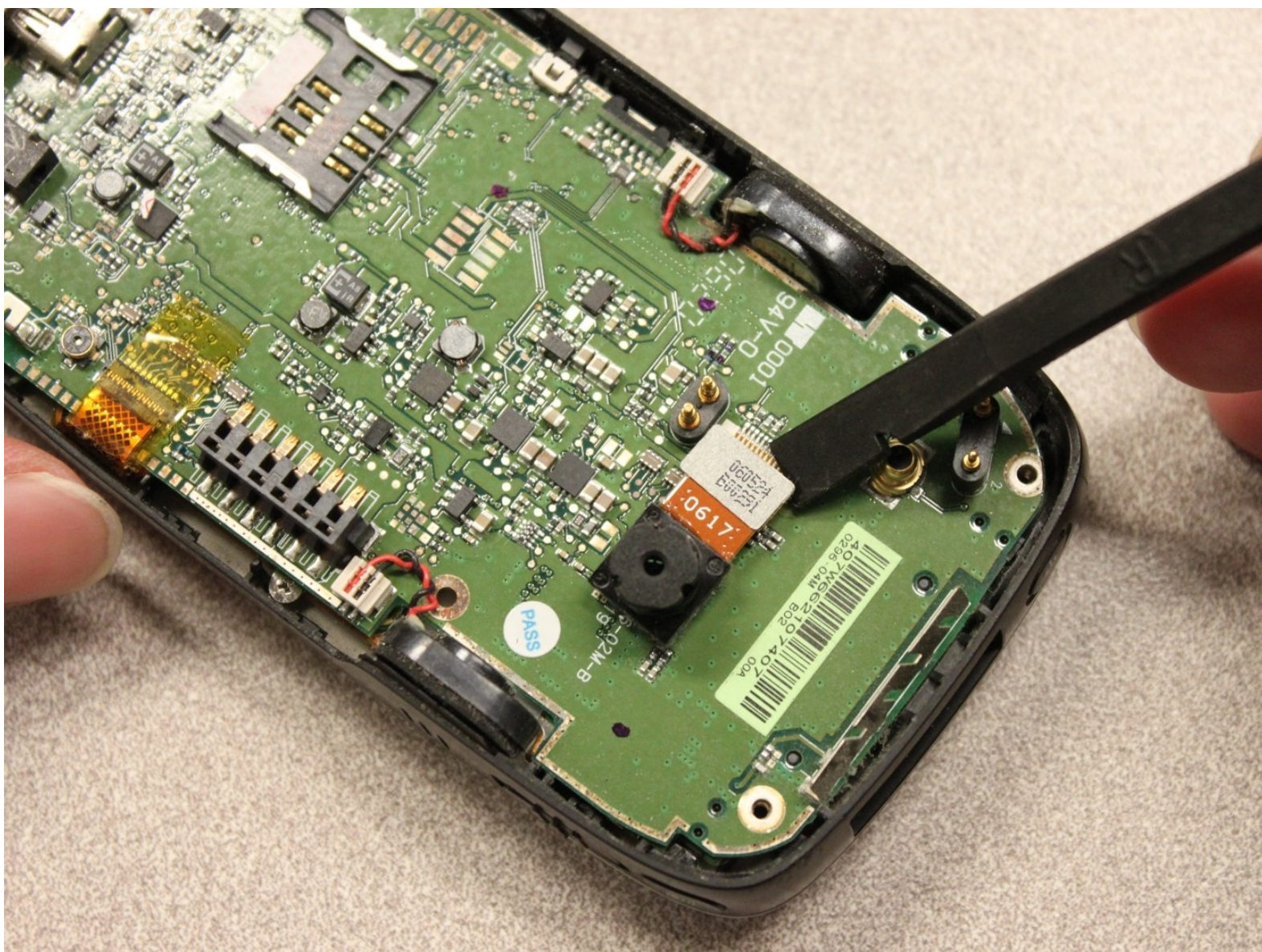




# HTC Wizard 200 Motherboard Replacement

Installation of motherboard in HTC Wizard 200.

Written By: Kyle Champ



---

# INTRODUCTION

Takes you through the steps to install the motherboard.



## TOOLS:

- [iFixit Opening Tool](#) (1)
  - [Spudger](#) (1)
  - [T5 Torx Screwdriver](#) (1)
  - [Tweezers](#) (1)
-



## Step 1 — Battery



- To expose the battery, remove the outer case with your fingernail.
- Remove the battery by pulling the black tab.

## Step 2 — Back Panel



- Insert the flat end of the [spudger](#) into the two notches on the back of the camera cover and pry them up.

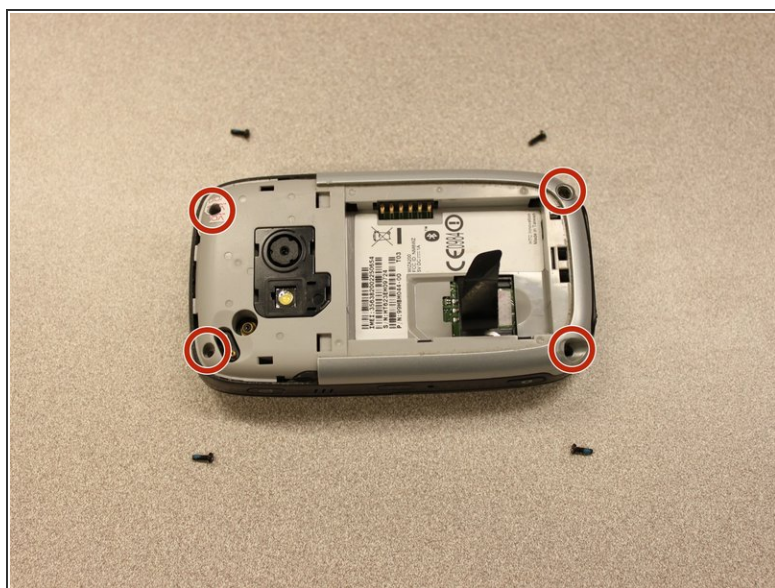


## Step 3



- Work the [spudger](#) around the edges of the camera cover until it comes off.

## Step 4



- Remove the four 6 mm screws with the [T5 Torx screwdriver](#).

**i** One of the screws is under the "void" sticker.

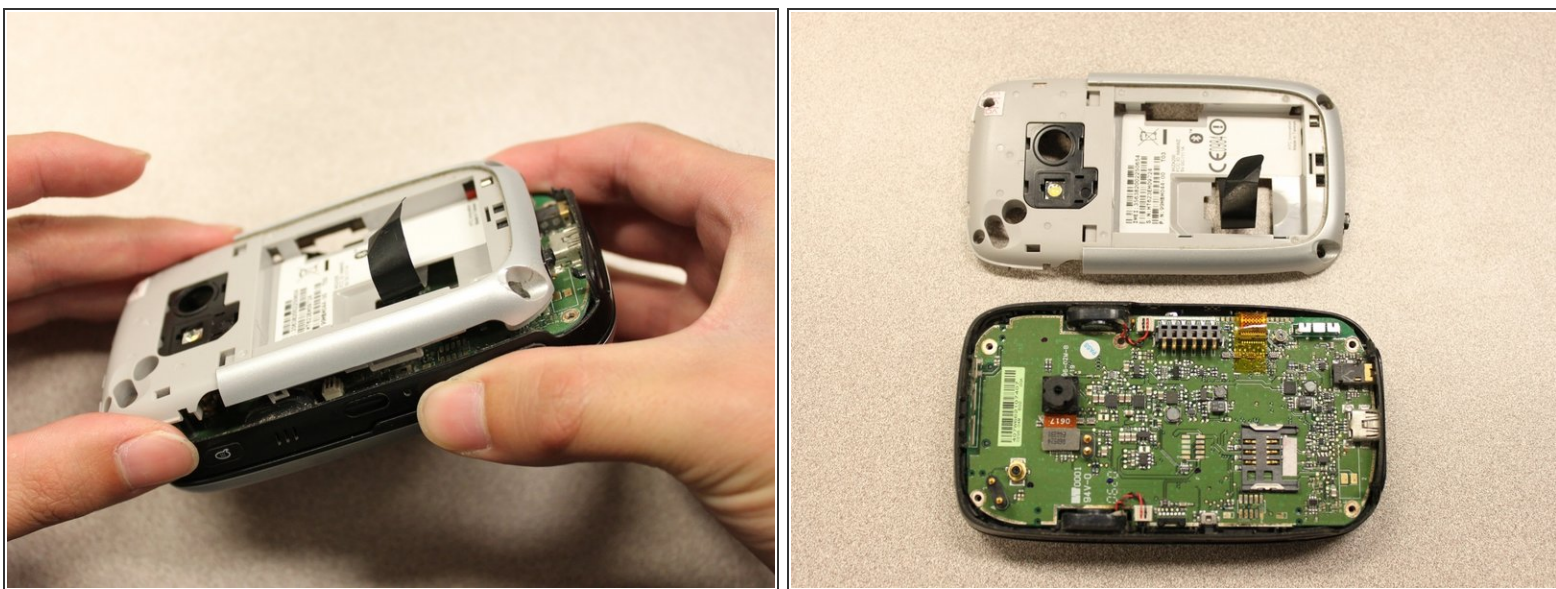


## Step 5



- Insert the flat end of an iFixit opening tool between the side and inner covers to create a gap.
- Work the tool around the edges until all the clips release.

## Step 6



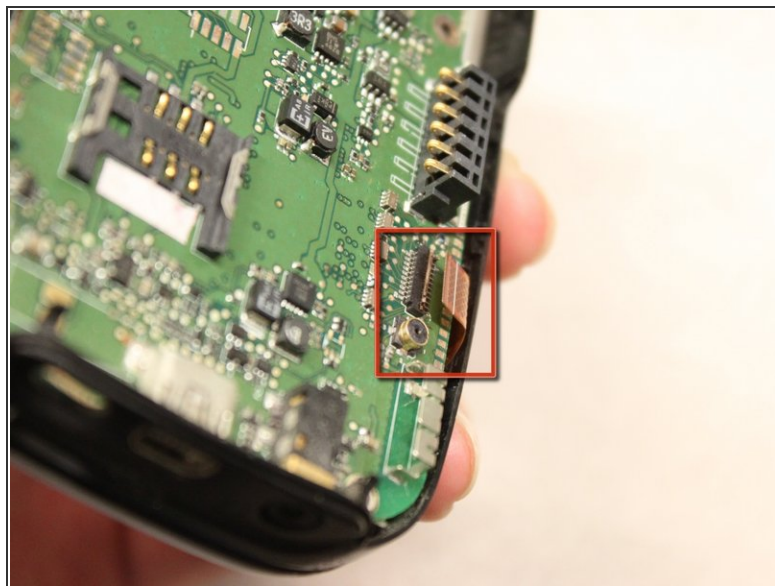
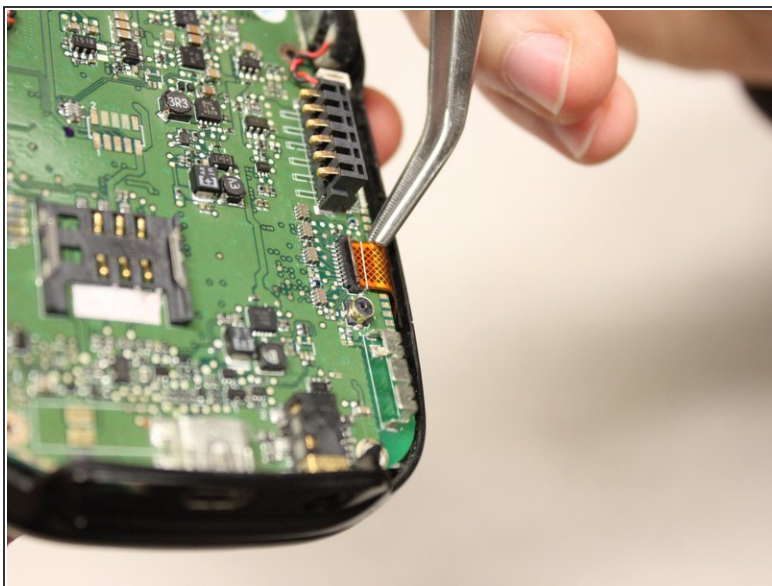
- Once all the clips are open, remove the inner panel from the phone.

## Step 7 — Motherboard



- Use the [spudger](#) to pry the camera off.

## Step 8



- Using [tweezers](#), flip the connector latch away from the motherboard.
- Detach the flexible connection from under the connector latch.

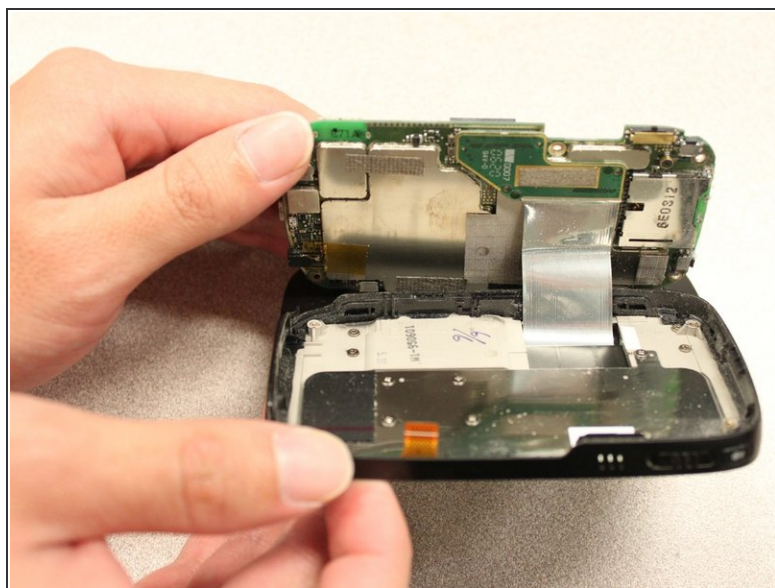
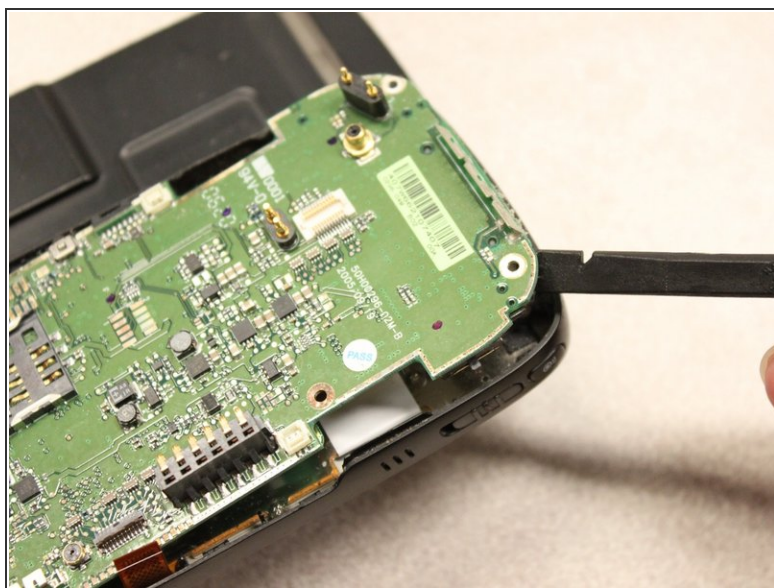


## Step 9



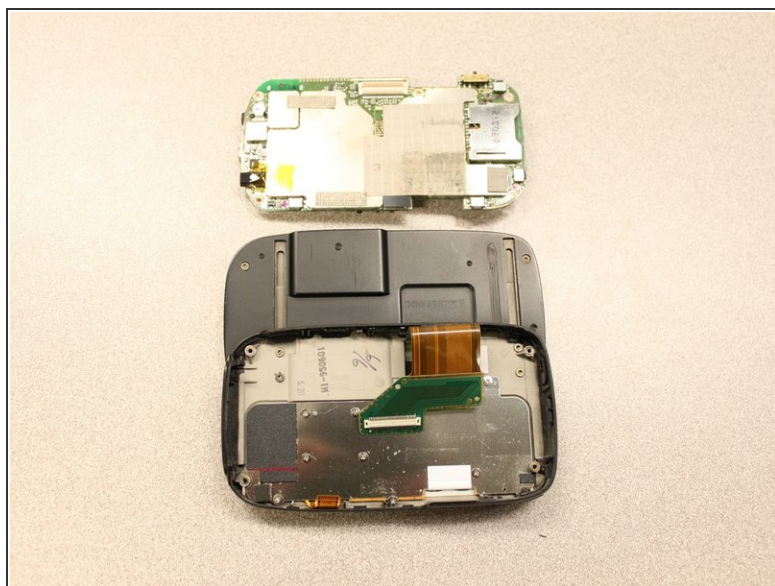
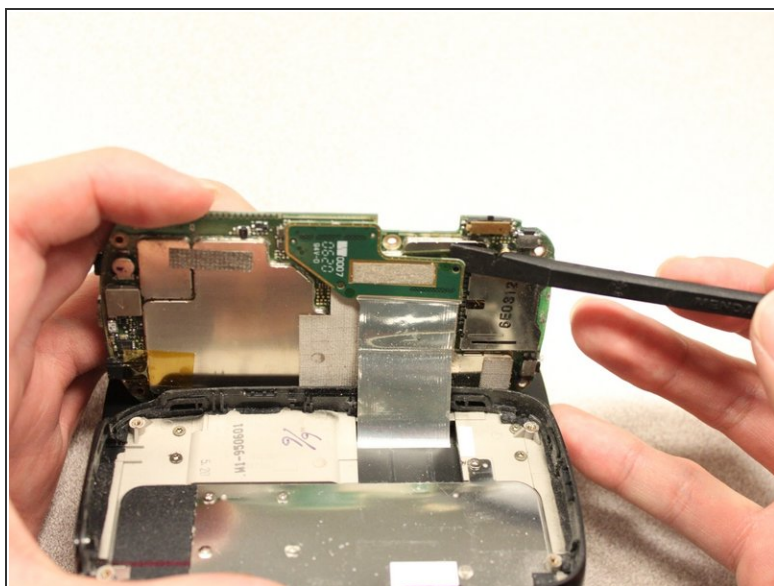
- Slide the keyboard into the open position.

## Step 10



- Lift the motherboard out of the case using the [spudger](#).
- Expose the underside of the motherboard using your hands.

## Step 11



- Remove the flexible connection from the motherboard.

**⚠ Caution:** Removing the connection too fast may cause damage to the connection and cables.

To reassemble your device, follow these instructions in reverse order.