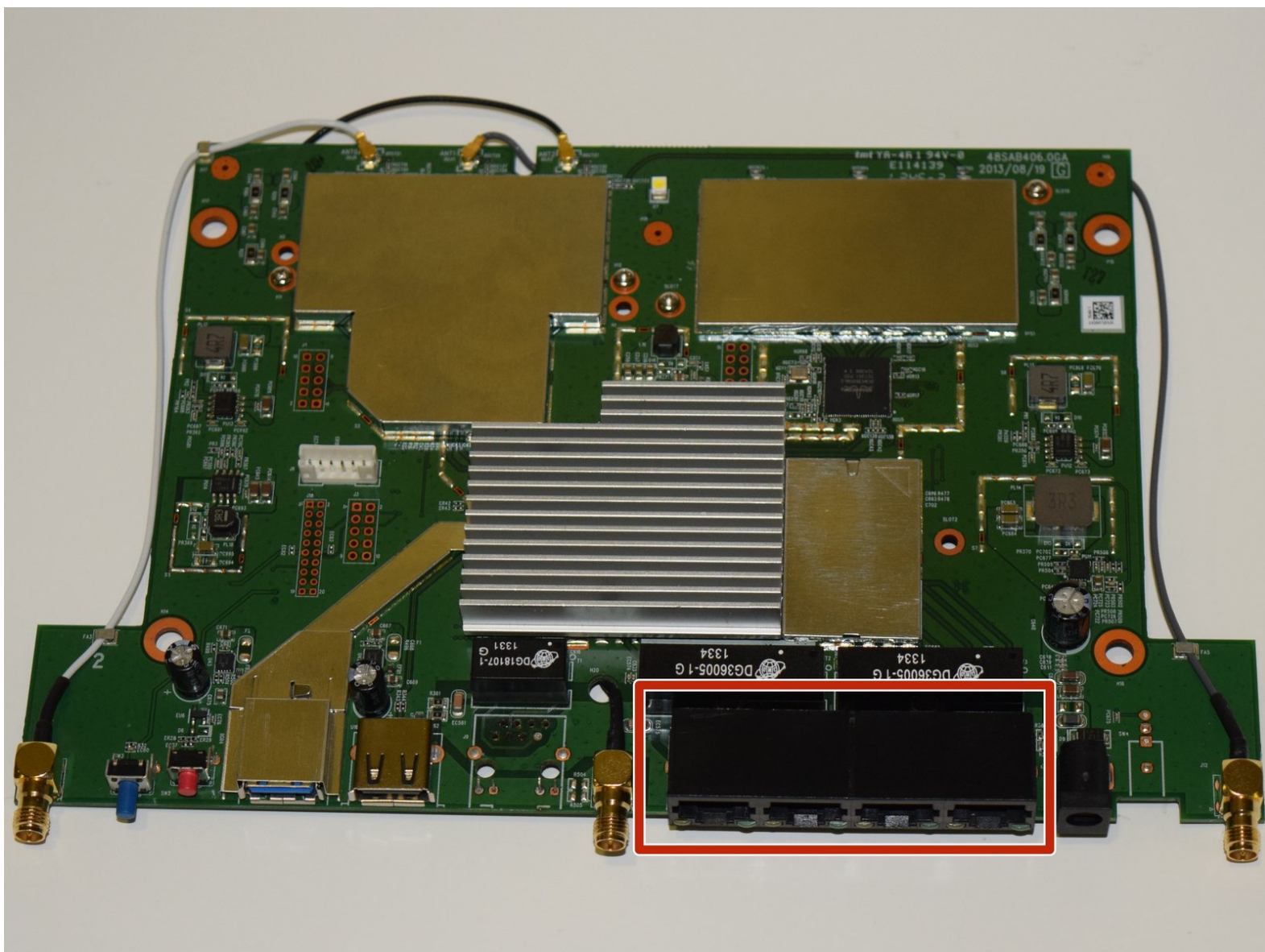




Ethernet Port Replacement

How to access the internal motherboard in order to replace the Ethernet ports.

Written By: Denis



INTRODUCTION

This guide will teach you how to access the motherboard in order to replace the Ethernet ports.



TOOLS:

- [Tweezers](#) (1)
 - [Phillips #1 Screwdriver](#) (1)
 - [iFixit Opening Tools](#) (1)
 - [Solder](#) (1)
 - [Spudger](#) (1)
 - [Soldering Iron](#) (1)
-

Step 1 — Linksys EA6900 Disassembly



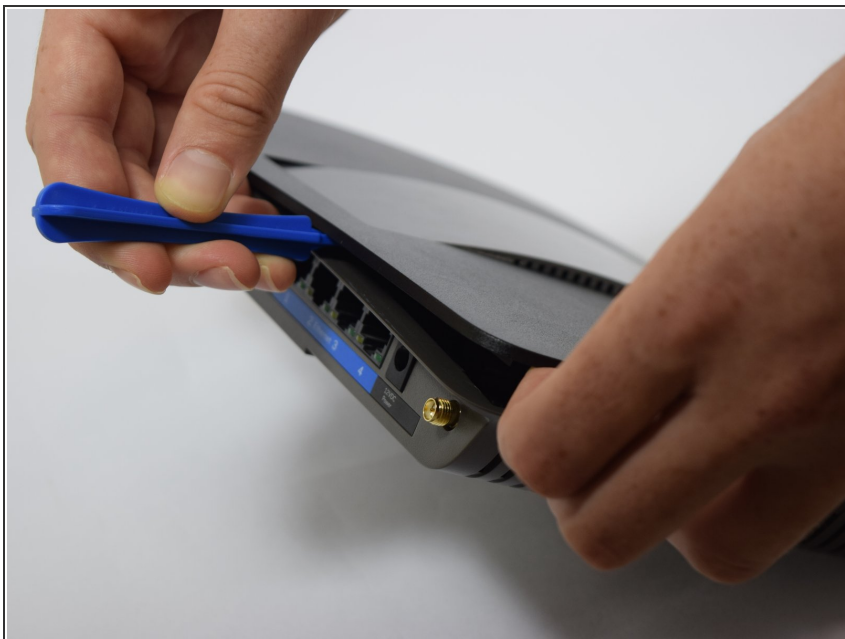
- Remove the antennas by unscrewing them from the base.
- Flip over the device and locate the four rubber feet on the bottom.
- Remove the rubber feet with tweezers

Step 2



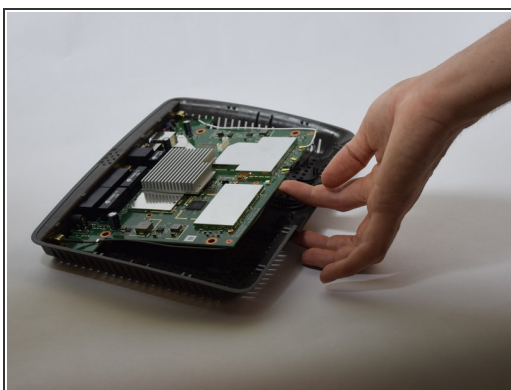
- Remove the 0.4cm head screws from each slot with the #1 Phillips head Screwdriver.

Step 3



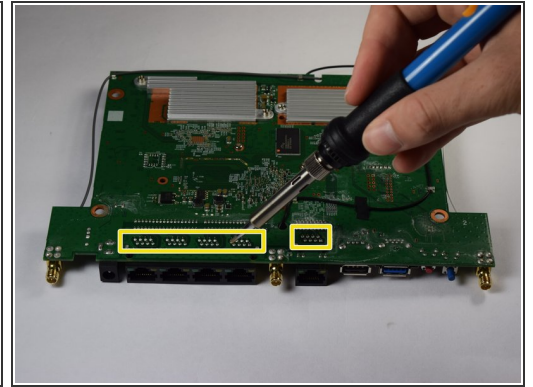
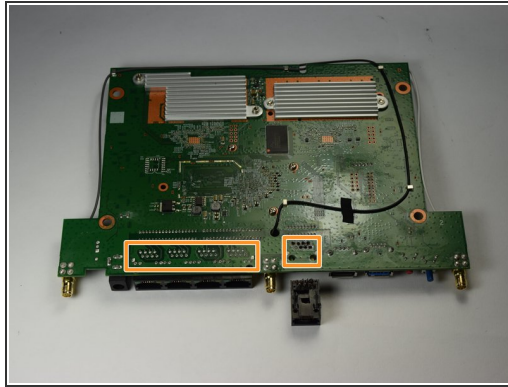
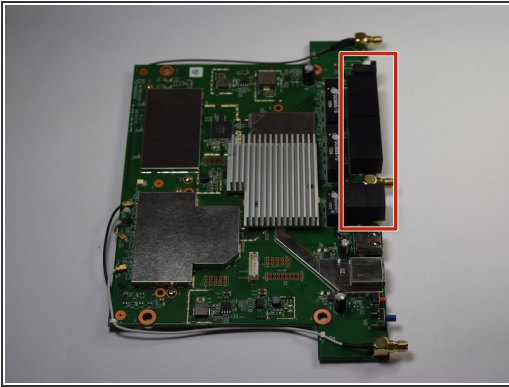
- Use a blue plastic opening tool to remove the top cover.
- Move the blue plastic opening tool gently underneath the top cover from side to side.

Step 4



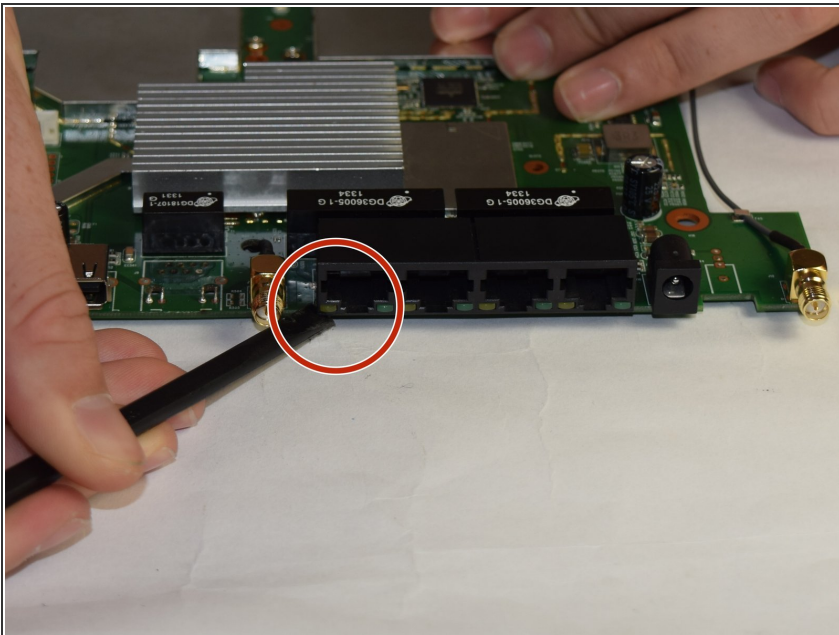
- Gently lift the motherboard and remove it from the case
- Put the motherboard over a (preferably white) surface.

Step 5 — Ethernet Ports



- Locate the Ethernet ports
 - Flip the motherboard and locate the 40 solder points corresponding to the Ethernet ports
 - Melt the 40 solder points using a soldering gun.
- ⚠ Wait between five and seven minutes for the ports to cool down.

Step 6



- Hold the motherboard down and use the spudger to remove the Ethernet Ports.

To reassemble your device, follow these instructions in reverse order.

