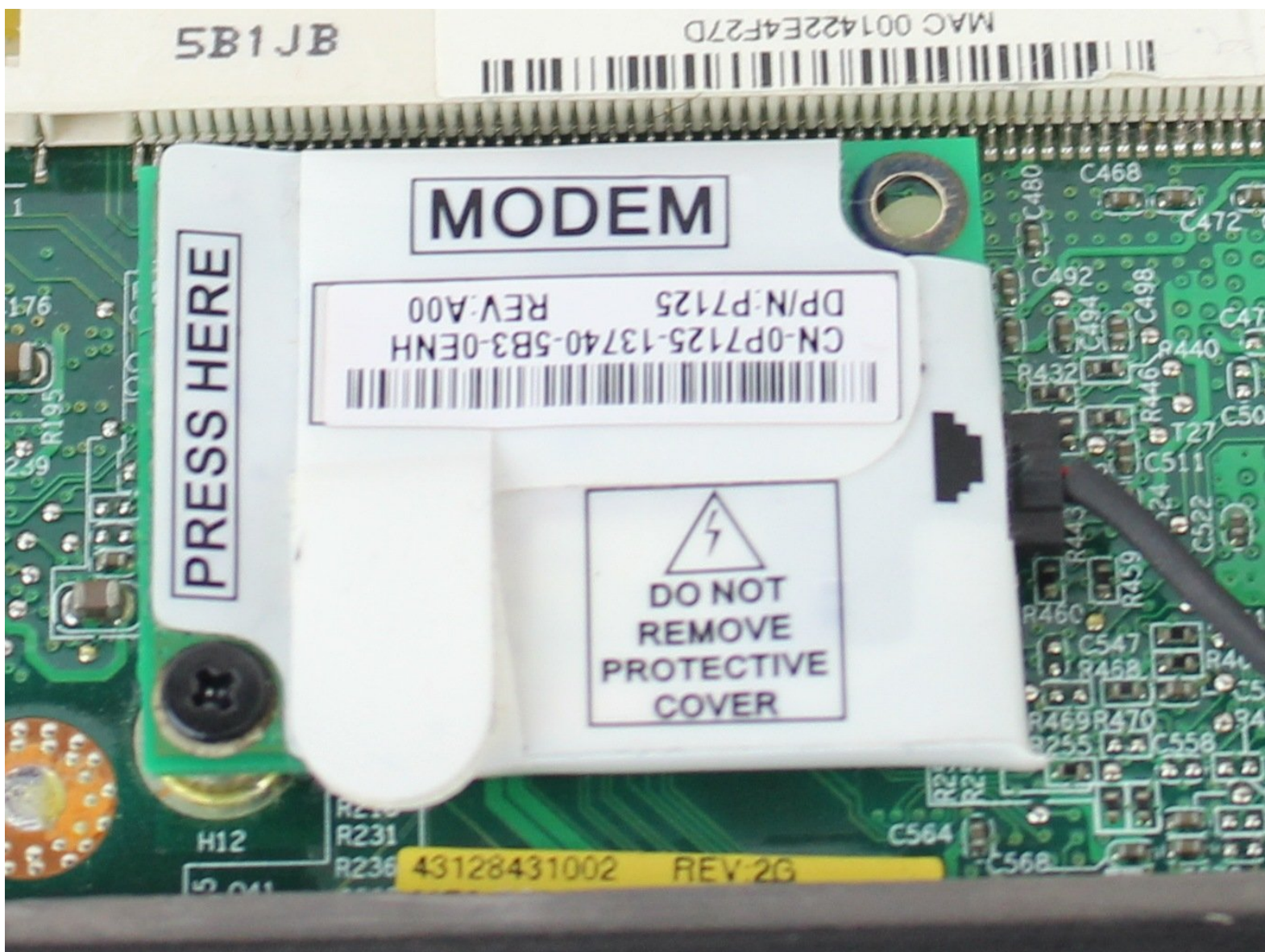




# Modem & WIFI Card Prerequisite

Inspection the Modem & WIFI Cards for the Dell Inspiron 9300

Written By: Randy McMillan



---

# INTRODUCTION

Inspection the Modem & WIFI Cards for the Dell Inspiron 9300

---



## TOOLS:

- [Phillips #0 Screwdriver](#) (1)
  - [Anti-Static Wrist Strap](#) (1)
  - [iFixit Opening Tools](#) (1)
-

## Step 1 — Modem & WIFI Card Prerequisite



- Flip the computer over and place it on a clean level surface.
- Loosen the screws using a size #0 Phillips screwdriver.
- ⓘ The screws do not come completely out.
- ⚠ It is strongly recommended that the [Anti-Static Wrist Strap](#) is used to avoid damage to internal components.

## Step 2



- Once the screws are loose, open the panel using a plastic opening tool to access the components below.
- ⓘ The modem card should be labeled MODEM. The WIFI card is larger than the modem and closer to the outer edge of the computer.

To reassemble your device, follow these instructions in reverse order.