



Macintosh PowerBook 165c Floppy Drive Replacement

This guide will demonstrate how to replace the Macintosh PowerBook 165c floppy drive.

Written By: Adam



INTRODUCTION

Use this guide to replace or upgrade your floppy drive.



TOOLS:

- [T10 Torx Screwdriver](#) (1)
 - [T8 Torx Screwdriver](#) (1)
-

Step 1 — Battery



- Orient the computer so the battery is facing you.
- Slide the gray plastic battery cover to the right.

Step 2



- Pull the battery toward yourself until it is fully detached.

Step 3 — Input/Output Door



- Orient the computer right side up with the rear facing you.
- Open the Input/Output (I/O) door.

Step 4



- Carefully bend the door into an arch until one of the pins releases from its slot.
- Once one of the pins is free, remove the I/O door from the computer.

Step 5 — Lower Case



- Orient the computer with the bottom facing up and rear facing you. You should be able to read the Macintosh label in this position.

Step 6



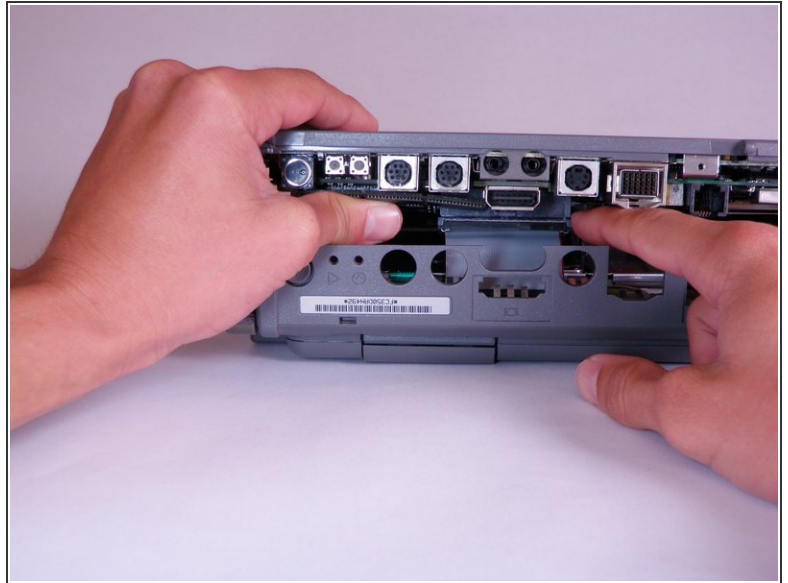
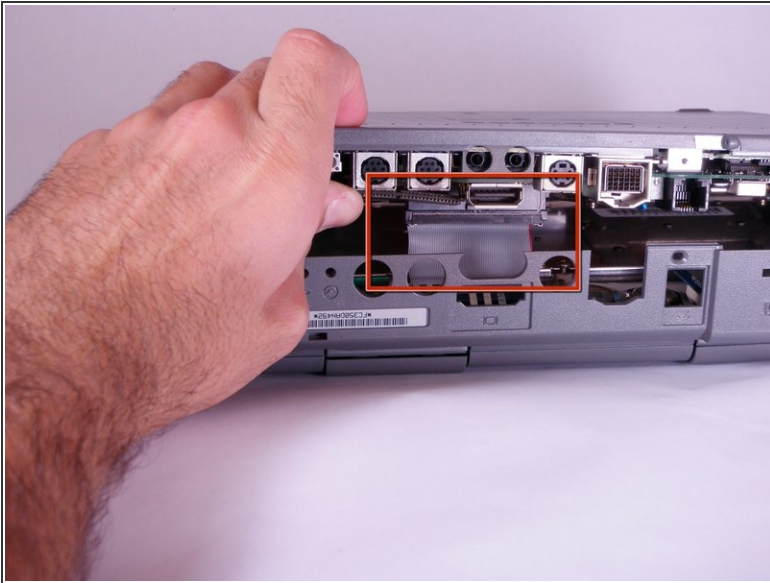
- Use a T8 torx screwdriver to remove the 6.8mm long screw above and to the right of the modem jack.
- Twist counter clockwise to remove the screw.

Step 7



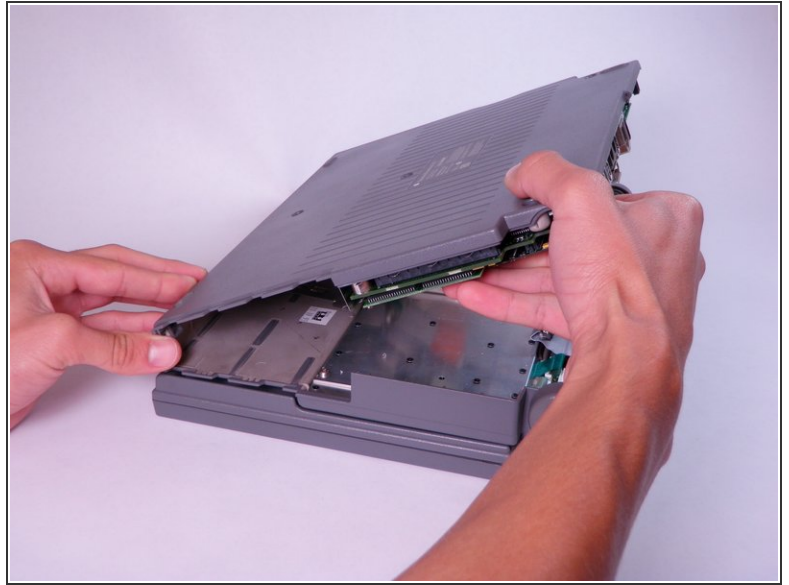
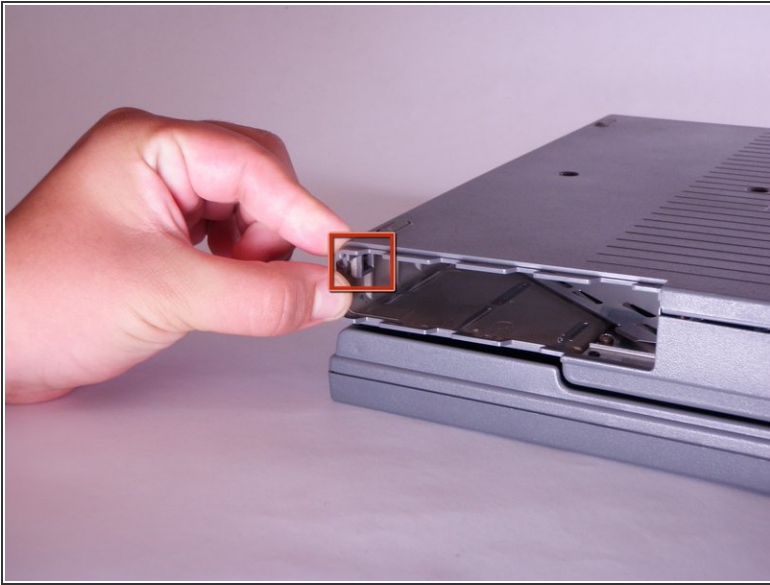
- Use a T10 torx screwdriver to remove the four, 18mm long screws from the lower case.

Step 8



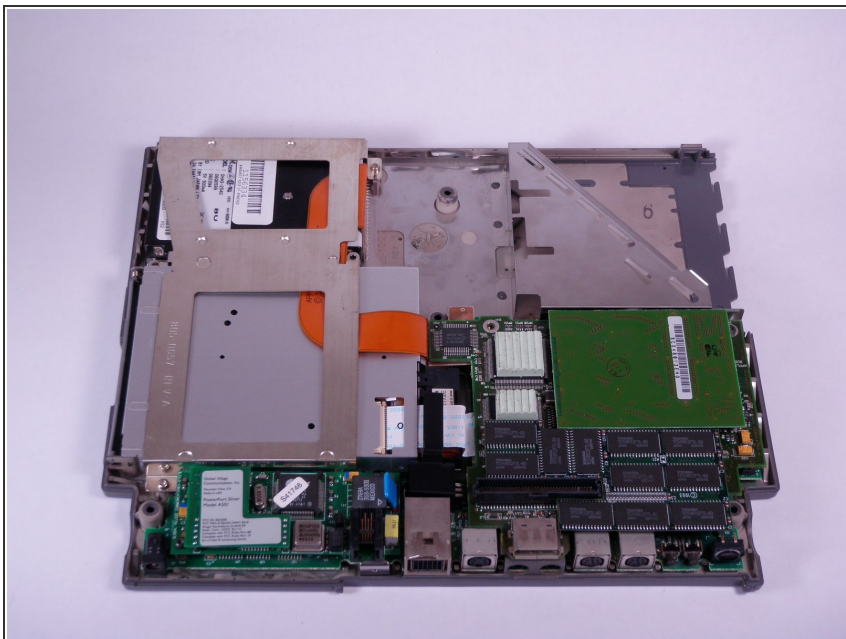
- Place your hands on the lower case, just above the I/O panel, and slowly lift the lower case a few inches above the main body of the computer.
 - Release the large, gray interconnect ribbon cable just behind the I/O panel.
- ⚠ Caution: Lower case cannot be fully removed until two plastic clips in the front corners are released. See the following step for details.

Step 9



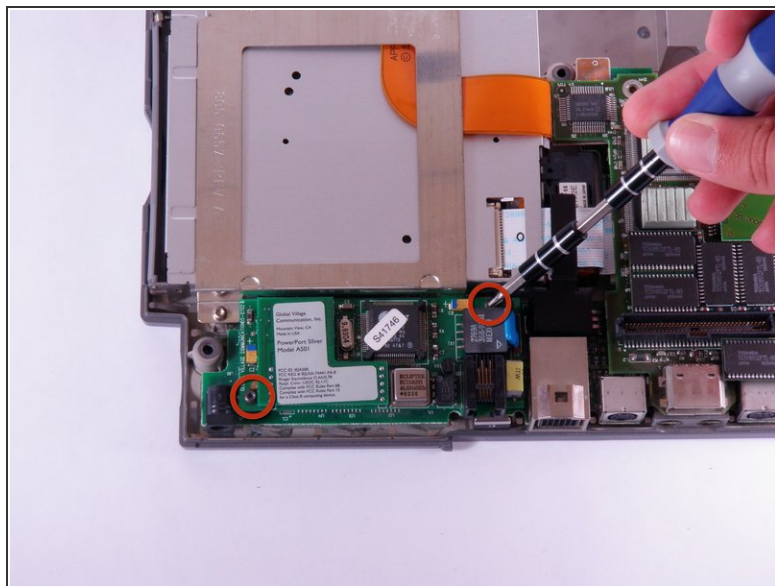
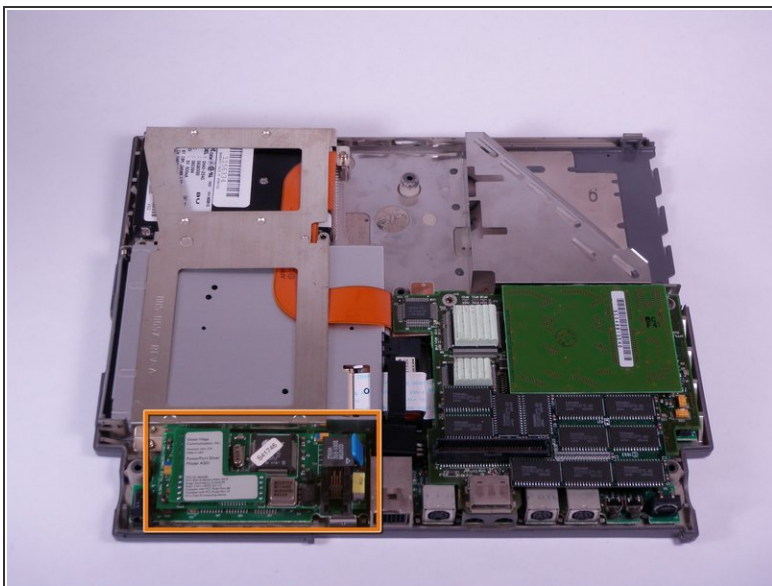
- Place your thumb on the upper case, inside the empty battery slot, and your index finger near your thumb on the left side of the lower case.
- Pinch your thumb and index finger towards each other to release the clip. Without releasing pressure on the pinch grip, use your index finger to push the lower case upwards.
- Lift the lower case to remove it.

Step 10 — Modem Card



- Orient the computer so the ports are facing you.

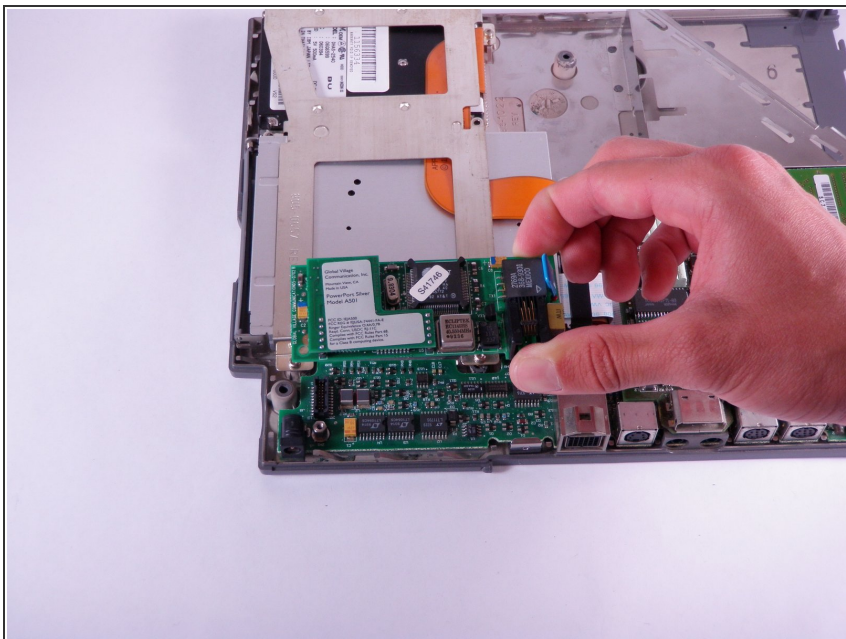
Step 11



- Locate the Modem Card on the lower case.
- Use a T8 torx screwdriver to remove the two, 7.7mm long screws from the two corners.
- ⓘ The modem card is an optional component on the Macintosh 165c, and may not be included in all devices.

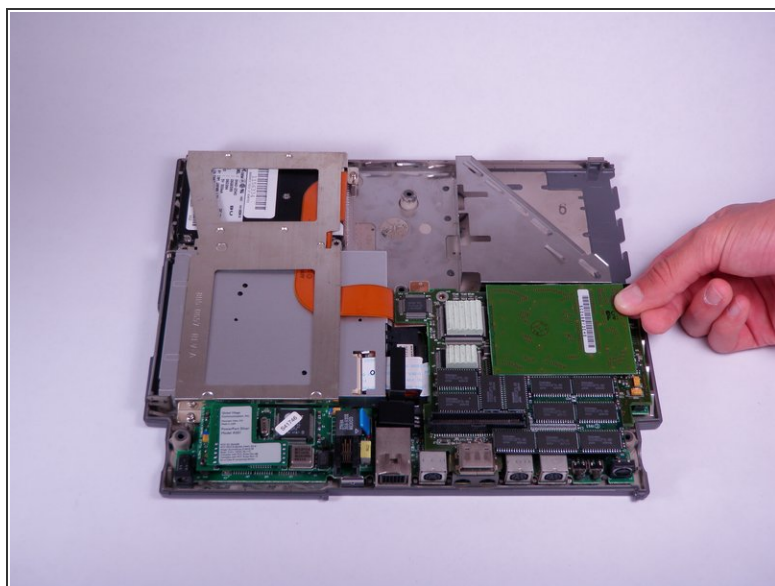
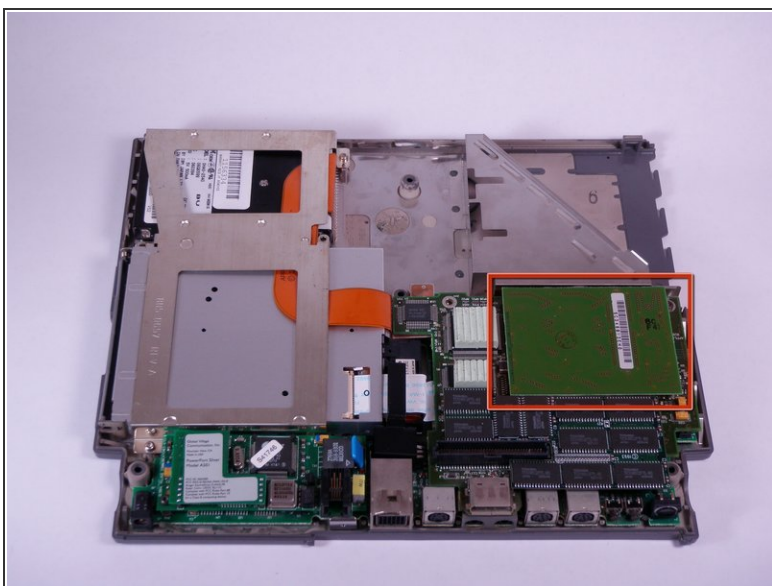
This document was generated on 2020-11-28 02:23:45 AM (MST).

Step 12



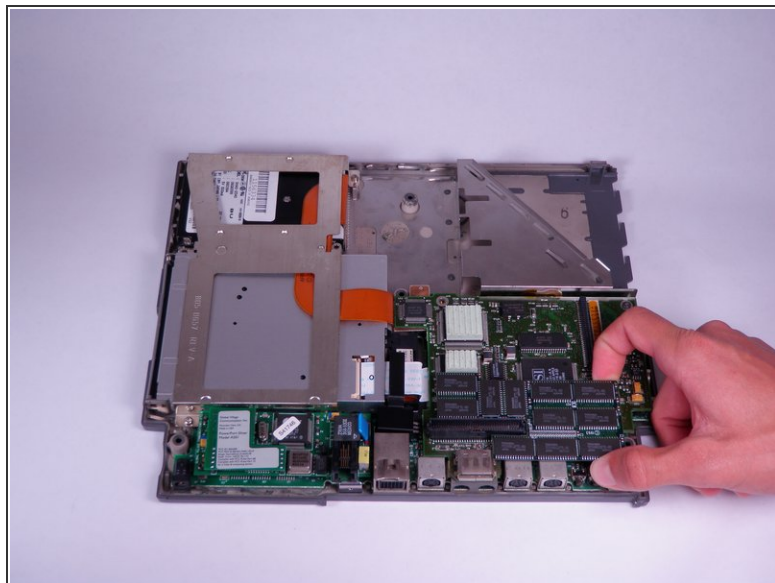
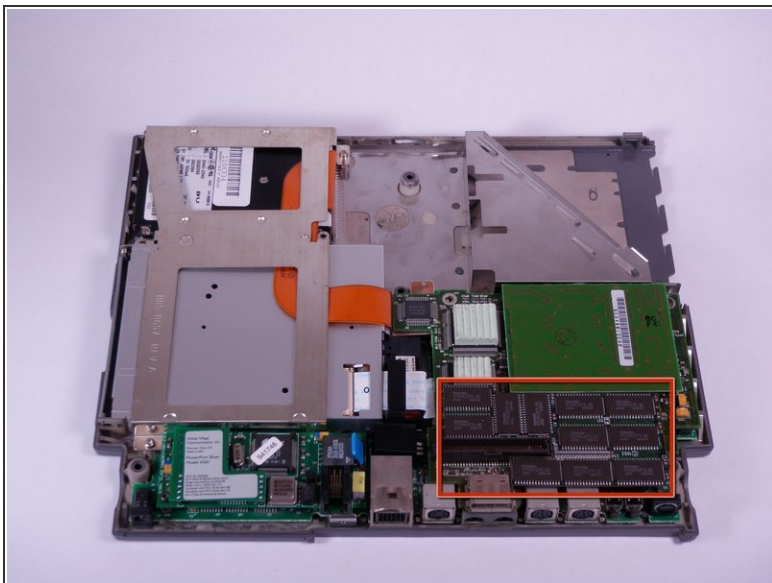
- Lift the modem card directly upward until it releases from the connector.
- If the modem card is difficult to remove, gently jostle it back and forth as you lift up.

Step 13 — RAM and PSRAM Expansion Card



- Locate and lift ram card directly up until connector releases.
- Move the card back and forth gently if the connector does not release immediately.

Step 14



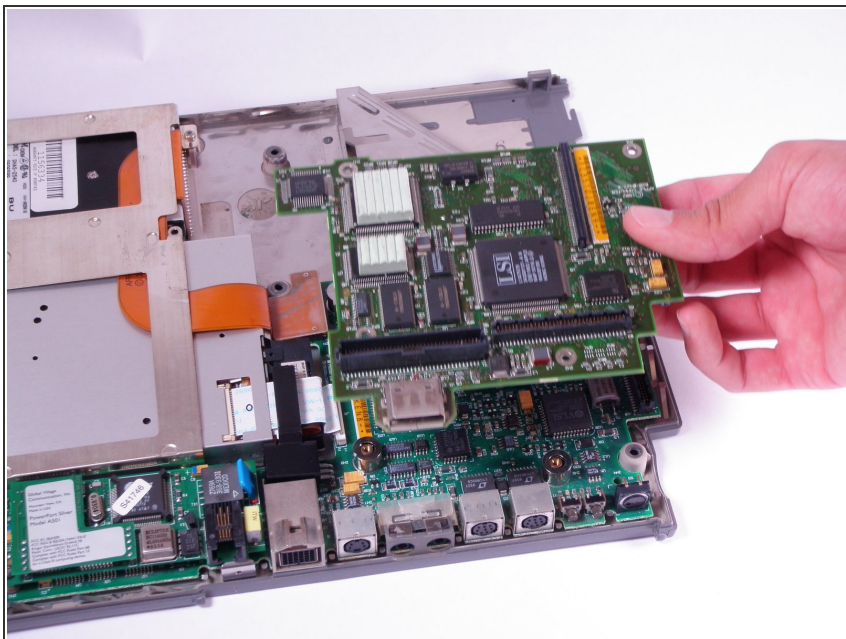
- Locate and lift the PSRAM expansion card vertically until connector releases.
- If the PSRAM expansion card is difficult to remove, gently jostle it back and forth as you lift up.
- i* The PSRAM expansion card is an optional component, and may not be included in all devices.

Step 15 — Daughterboard



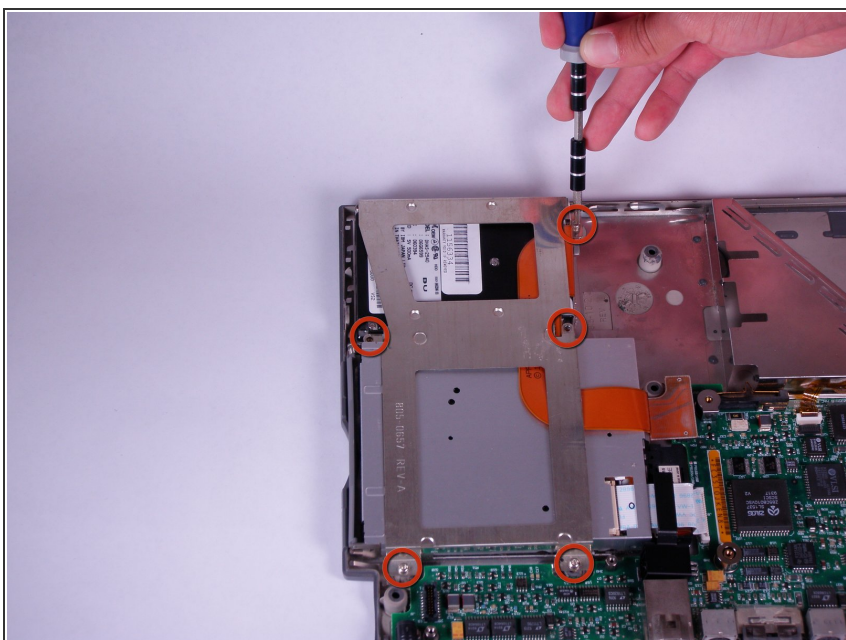
- Use T8 torx screwdriver to remove four, 7.7mm long screws from the perimeter of the daughterboard.

Step 16



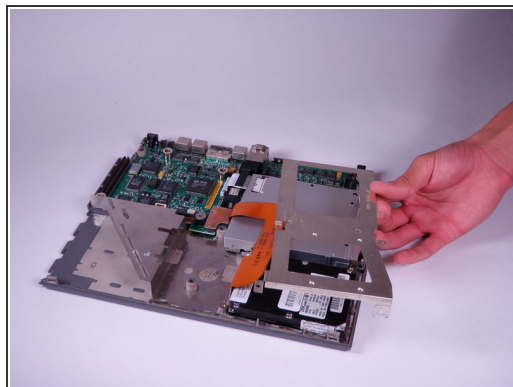
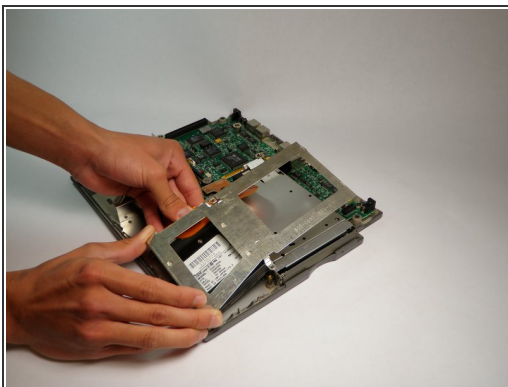
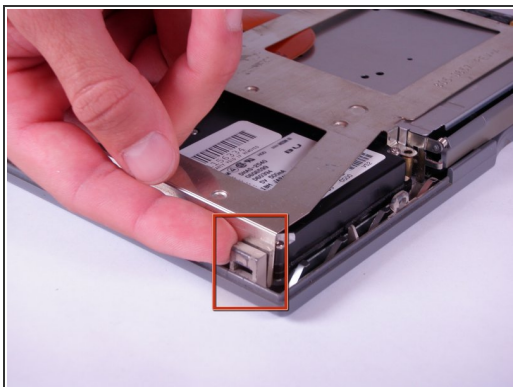
- Lift the daughterboard directly up to remove it from the connector.
- If the daughterboard does not easily release from the connector, gently jostle it back and forth as you lift up.

Step 17 — Floppy Drive



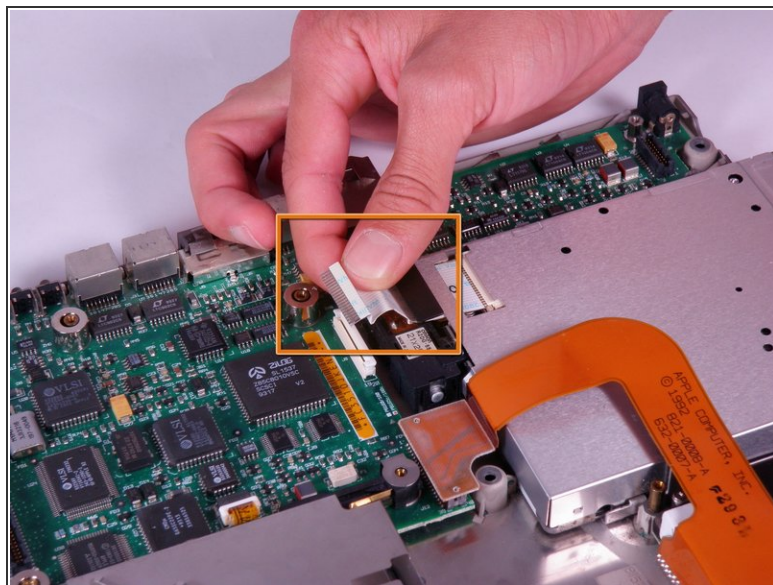
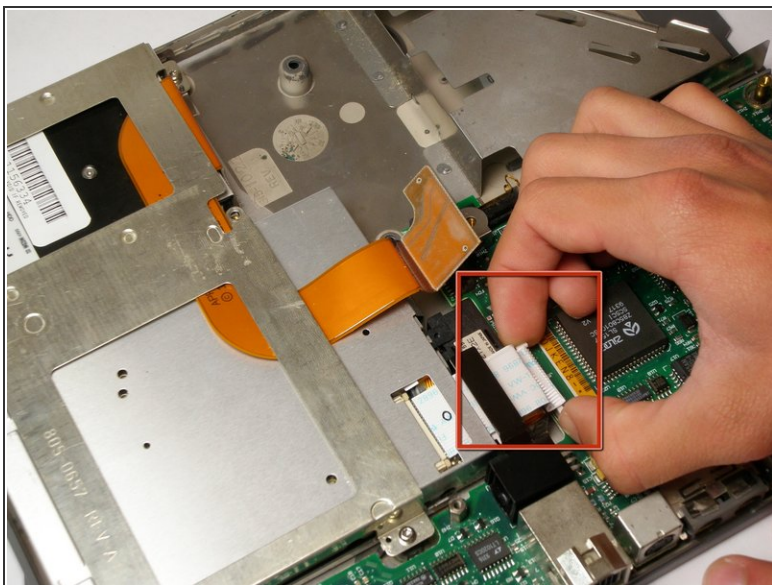
- Use a T8 torx screwdriver to remove the five, 6.8mm long screws on the drive retainer.

Step 18



- Orient the computer so the plastic clip in top left corner of the lower case is facing you. Release the clip by lifting the retainer. You may need to adjust the hard drive to remove the retainer.
- Lift the drive retainer out.

Step 19



- Open the white lock out tab to the right of the floppy drive.
- Remove the white floppy drive ribbon cable by gently pulling it away from the opened tab fastener.

Step 20



- Lift the floppy drive upwards to remove it.

To reassemble your device, follow these instructions in reverse order.