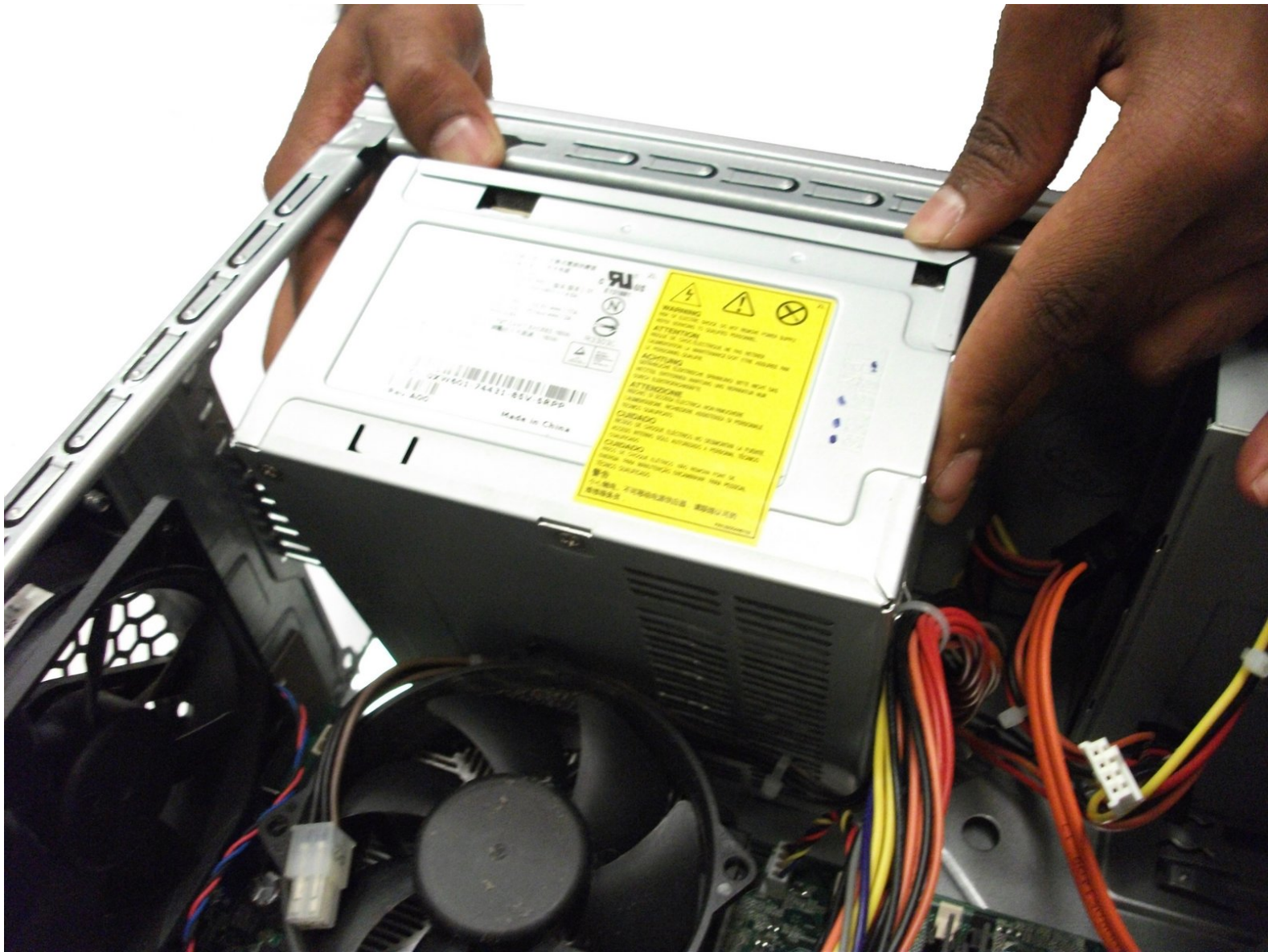




# Dell Inspiron 530 Power Supply Replacement

Removing the computer's power supply unit

Written By: Doug Howe



---

## INTRODUCTION

This guide will demonstrate removing the computer's power supply.



### TOOLS:

- [Phillips #0 Screwdriver](#) (1)
-

## Step 1 — Side Panel



- Place the case on its side.
- Locate and remove the two 13.1 mm thumbscrews.

## Step 2



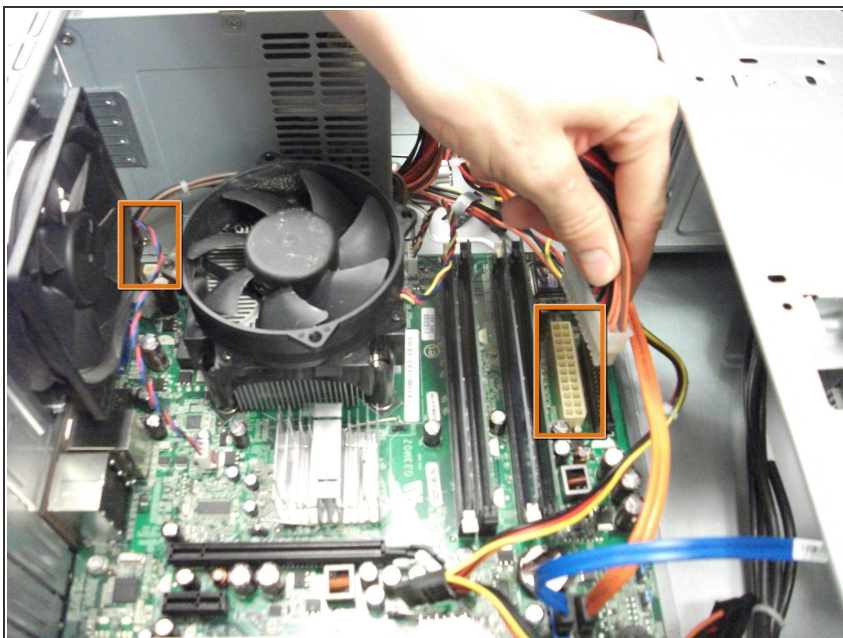
- Slide the side panel towards the back and remove.

## Step 3 — Power Supply



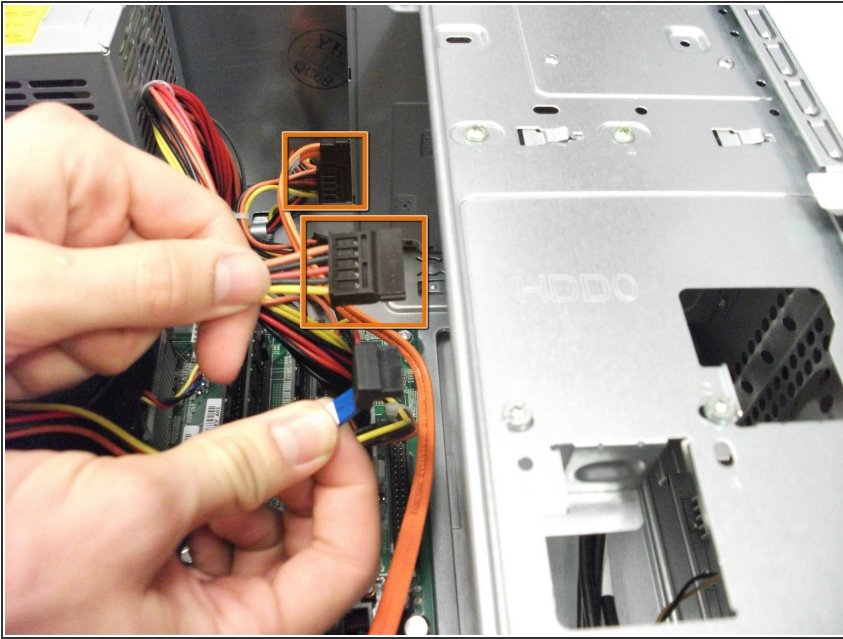
- Locate the power supply in upper-back corner of the case.

## Step 4



- Remove the two power cables from the motherboard.

## Step 5



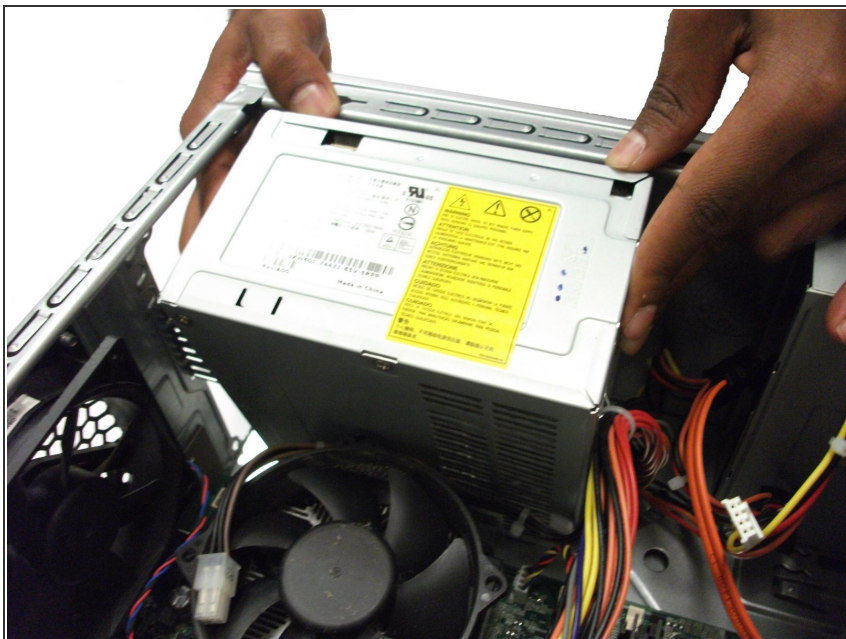
- Remove the power cables from the CD/DVD drive and hard drive.

## Step 6



- Locate and remove the four Philips #0 8.9 mm screws on the outside of the case.

## Step 7



- Gently remove the power supply from the case.

To reassemble your device, follow these instructions in reverse order.