



iPhone 4S Rear Camera Replacement

Use this guide to remove the iPhone's primary...

Written By: Walter Galan



INTRODUCTION

Use this guide to remove the iPhone's primary rear camera.

TOOLS:


Phillips #000 Screwdriver (1)
iFixit Opening Tool (1)
Tweezers (1)
P2 Pentalobe Screwdriver iPhone (1)

PARTS:

iPhone 4S Rear Camera (1)

Step 1 — Rear Panel



 Before you begin, discharge your iPhone battery below 25%. A charged lithium-ion battery can catch fire and/or explode if accidentally punctured.

- Power off your iPhone before beginning disassembly.
- Remove the two 3.6 mm Pentalobe P2 screws next to the dock connector.
- ① Be sure the driver is well-seated when removing Pentalobe screws—they are easy to strip.

Step 2



- Push the rear panel toward the top edge of the iPhone.

ⓘ The panel will move about 2 mm.

Step 3



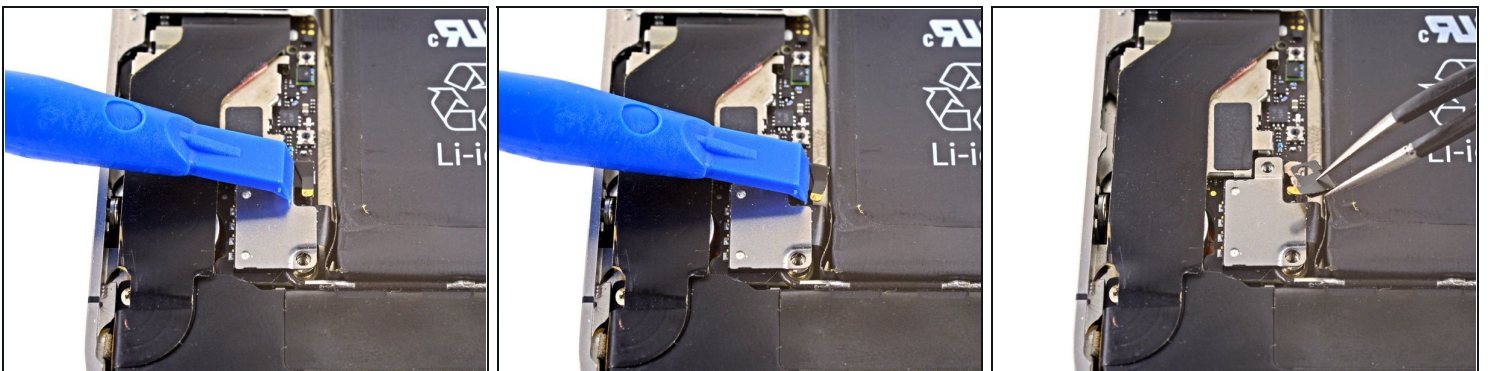
- Pull the rear panel away from the back of the iPhone, being careful not to damage the plastic clips attached to the rear panel.
- Remove the rear panel from the iPhone.

Step 4 — Battery



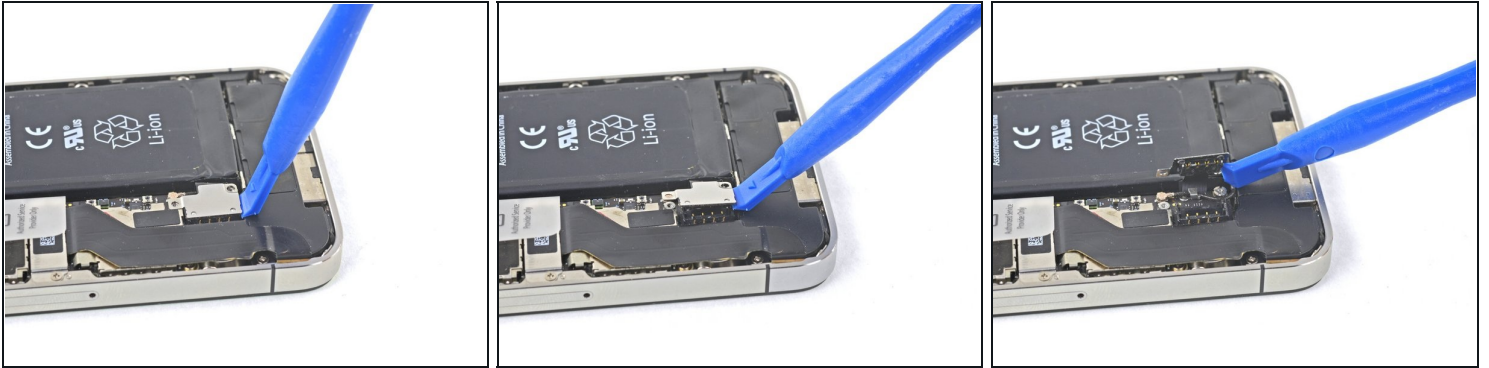
- Remove the following screws securing the battery connector to the logic board:
 - One 1.7 mm Phillips screw
 - One 1.5 mm Phillips screw

Step 5



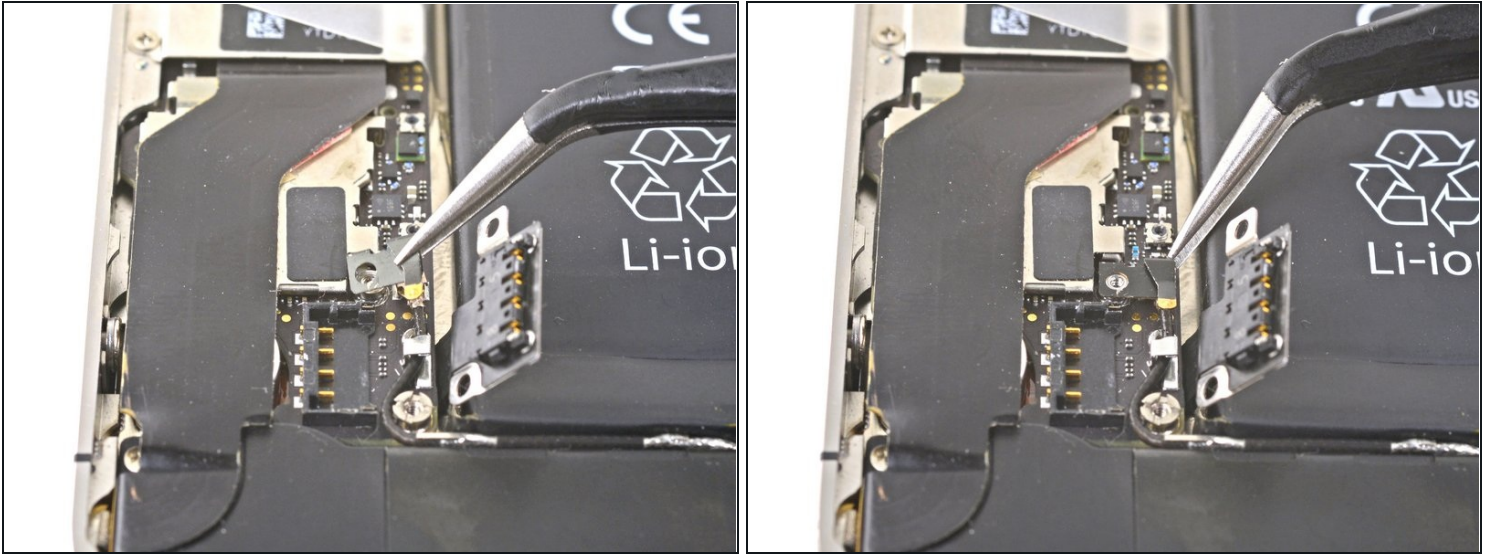
- Carefully push the pressure contact away from the battery connector until it slides free from its position.
- Remove the pressure contact.

Step 6



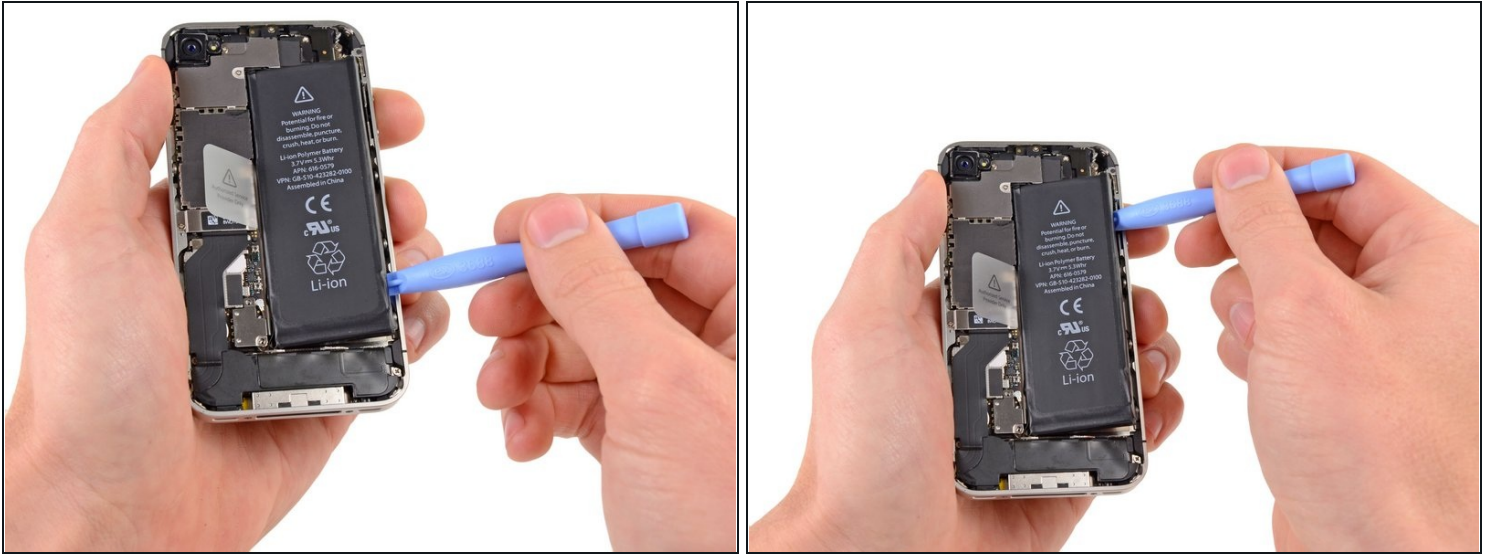
- Use a plastic opening tool to gently pry up the battery connector from its socket on the logic board.
 - Place the tip of the tool between the loudspeaker enclosure and the metal cover of the connector, and lift the bottom edge of the connector first.
- ⓘ The battery connector comes off vertically from the logic board. Do not apply force sideways.
- ⚠ Be careful not to pry at the battery connector socket itself, or it may detach from the logic board. There are four very small solder points awaiting this mistake!

Step 7 — Reassembly tip



- ★ During reassembly, be sure to carefully position the pressure contact back in place. It should rest on top of the Philips screw post shown, and the gold contact should point towards the battery connector.
- i Be sure to clean the pressure contact with a degreaser such as windex or isopropyl alcohol. The oils on your fingers have the potential to create wireless interference.

Step 8



- Insert the edge of a plastic opening tool between the battery and the outer case near the bottom of the iPhone.
- Run the plastic opening tool along the right edge of the battery and pry up at several points to completely separate it from the adhesive securing it to the outer case.
- ① If the adhesive is too strong, apply a few drops of high concentration (over 90%) isopropyl alcohol under the edge of the battery.
 - Wait about one minute for the alcohol solution to weaken the adhesive.
 - Use the flat end of a plastic opening tool to gently lift the battery.
- ⚠ Don't try to forcefully lever the battery out. If needed, apply a few more drops of alcohol to further weaken the adhesive. Never deform or puncture the battery with your pry tool.
- ☑ If there's any alcohol solution remaining in the phone, carefully wipe it off or allow it to air dry before installing your new battery.

Step 9

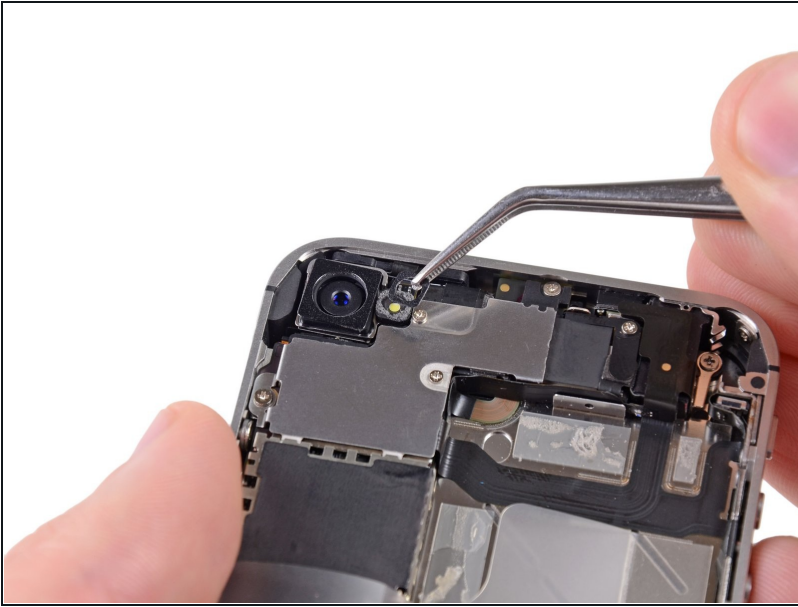


- Use the exposed clear plastic pull tab to peel the battery off the adhesive securing it to the iPhone.

⚠ Be careful not to pull the plastic pull tab too hard as it can be ripped off very easily.

- Remove the battery.
- ⓘ If your replacement battery came in a plastic sleeve, remove it before installation by pulling it away from the ribbon cable.
- ☑ If your replacement battery came with an uncreased cable, carefully [crease the cable into the proper shape](#) before installing the battery into the phone.
- ☑ While installing the replacement battery, temporarily connect the battery connector to the phone to ensure proper alignment. Once the battery is glued in place, disconnect the battery connector.
- ☑ Perform a [hard reset](#) after reassembly. This can prevent several issues and simplify troubleshooting.

Step 10 — Rear Camera



⚠ Be wary of the outer plastic ring located on top of the rear camera's flash assembly. It can be easily displaced if not removed during disassembly.

ⓘ You can use [tweezers](#), a plastic opening tool, or a spudger to remove the outer plastic ring.

Step 11



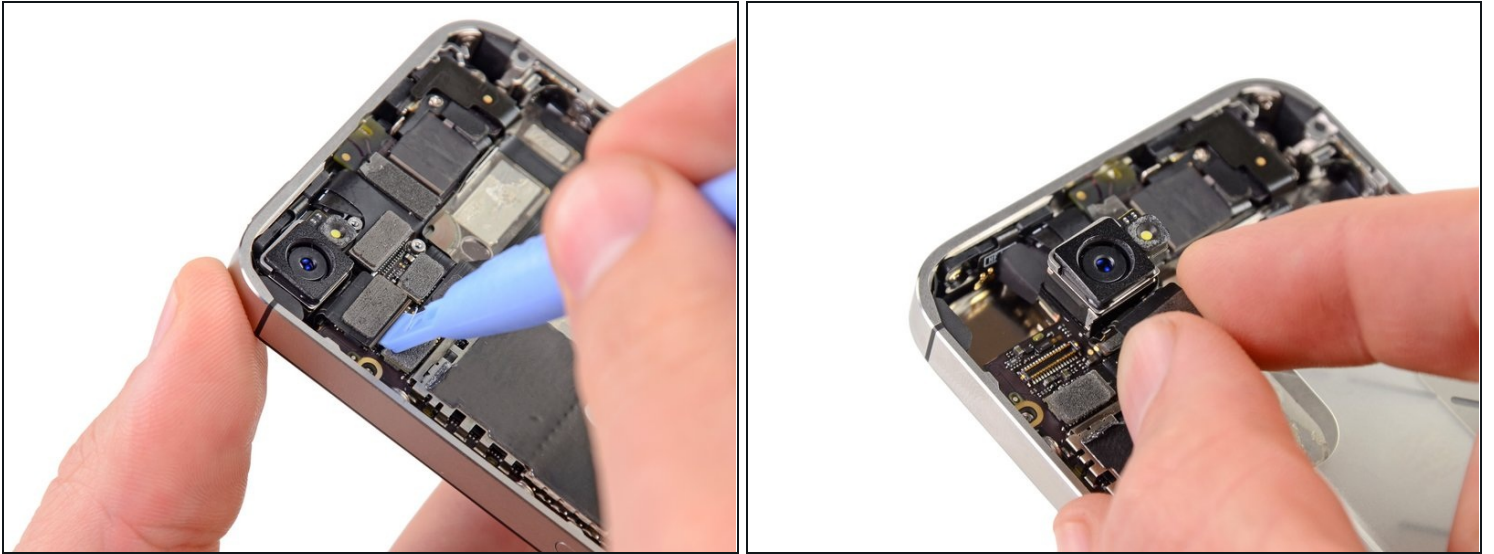
- Remove the following four screws securing the cable cover to the logic board:
 - One 2.7 mm Phillips screw
 - One 2.6 mm Phillips screw
 - One 1.3 mm Phillips screw
 - One 1.2 mm Phillips screw

Step 12



- Use the edge of a plastic opening tool to pry the cable cover tabs out of their slots cut into the EMI shield on the logic board.
- Lift the cable cover from its edge nearest the top and remove it from the iPhone.

Step 13



- Use the edge of a plastic opening tool to pry the rear camera connector up from its socket on the logic board.
- ⚠ Be careful not to break any components off the surrounding area on the logic board as you pry upwards.
- Remove the rear camera from the iPhone.
- ☑ There is a small rubber gasket that sits underneath the rear-facing camera. Make sure that it is properly seated before reassembly.
-

To reassemble your device, follow these instructions in reverse order.