

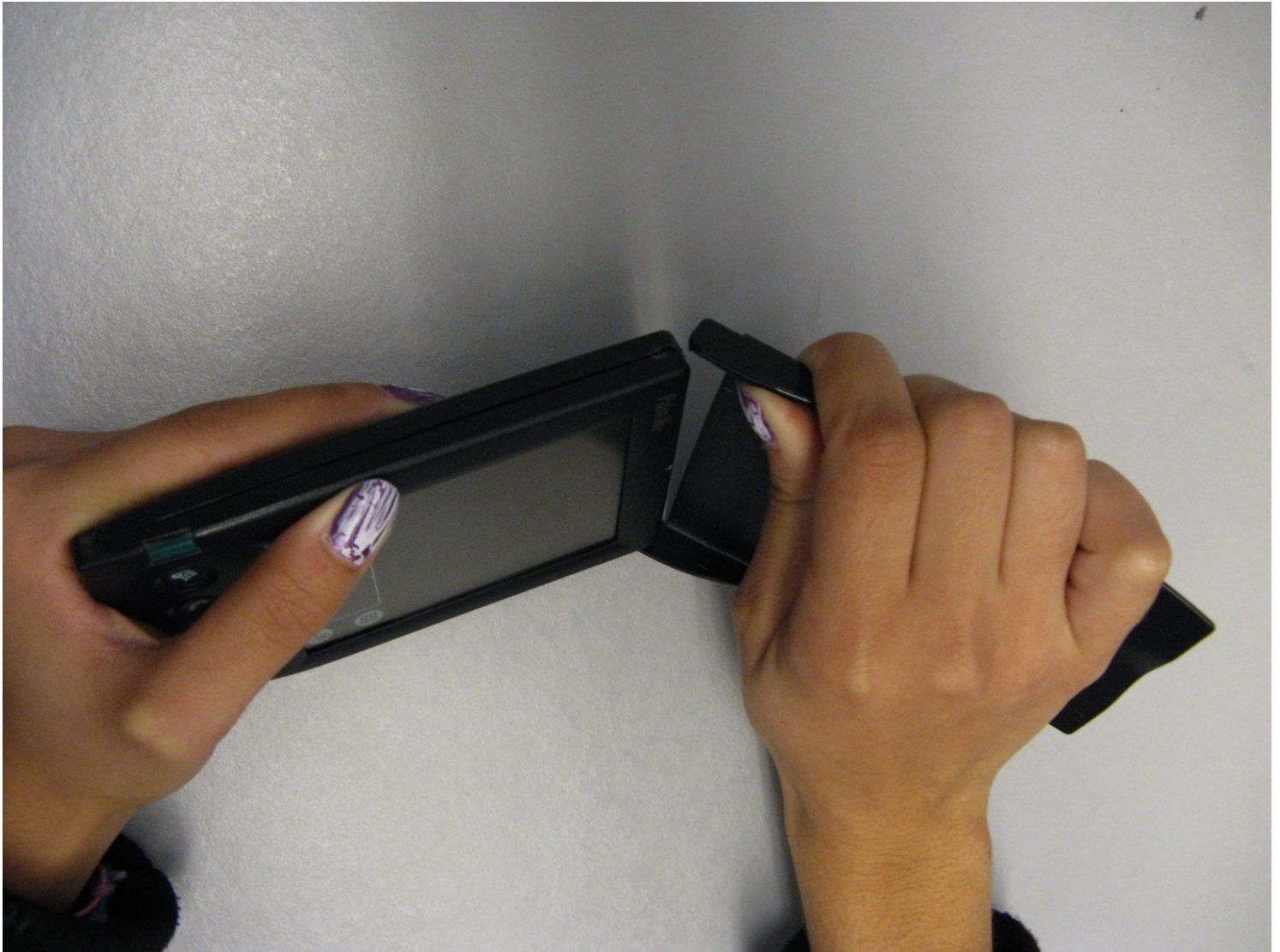


Archived

# Palm IIIc LCD Screen Replacement

By following these steps you can successfully...

Written By: Zach



# INTRODUCTION

By following these steps you can successfully repair your device.

---

## TOOLS:

Spudger (1)

Tweezers (1)

Phillips #00 Screwdriver (1)

---

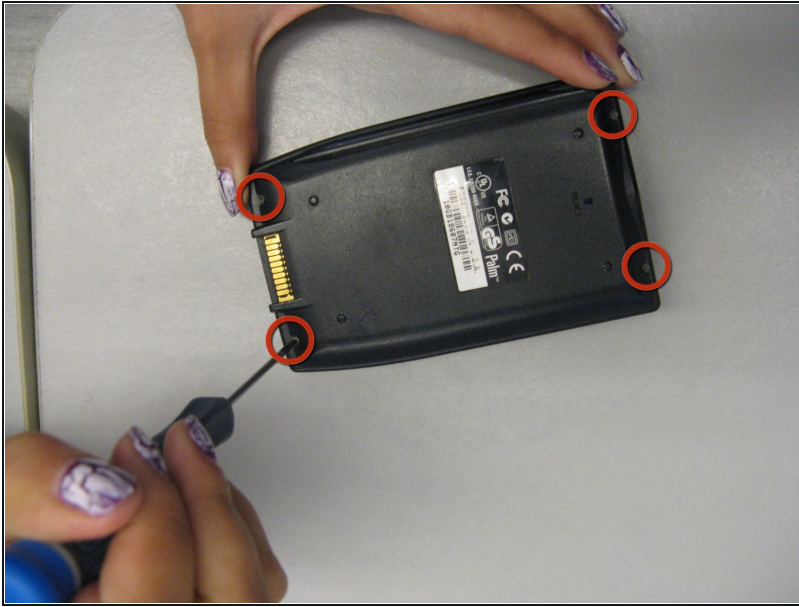
## Step 1 — LCD Screen



- Gently pull off plastic device cover where it connects to the rest of the Palm IIIc.
- ① Keep track of the device cover.



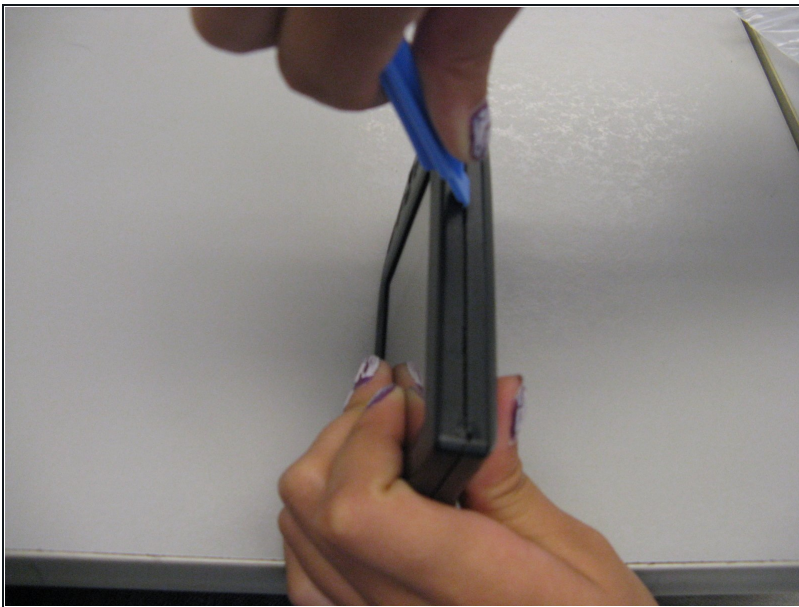
## Step 2



- Using a Phillips head screw driver, take out the four screws on the back of the device. You may have to pull them out with your hands once they are unscrewed.

ⓘ Keep track of your four screws. Don't lose them.

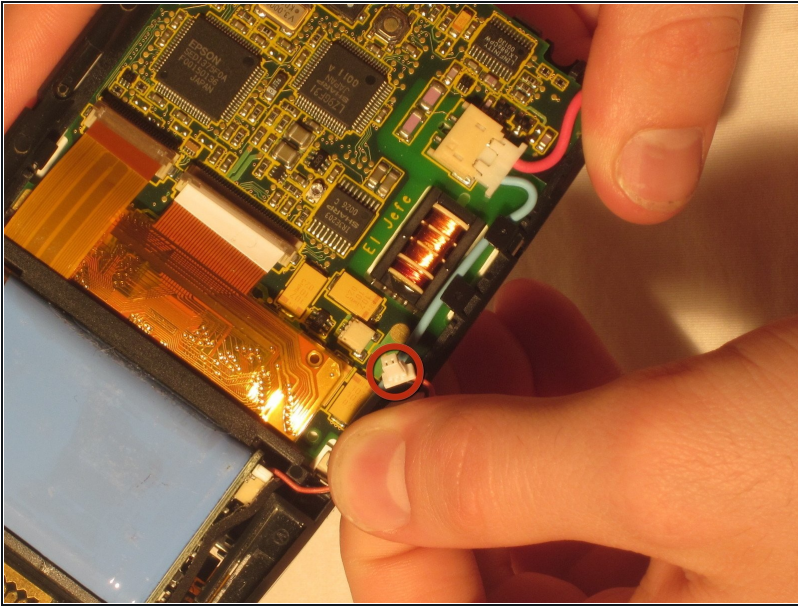
## Step 3



⚠ A small sensor cover will fall out when the front and back covers are removed. Keep track of it.

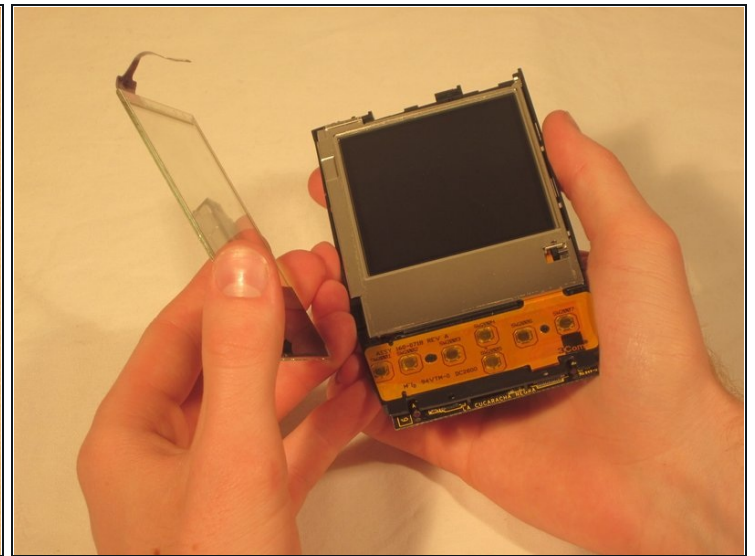
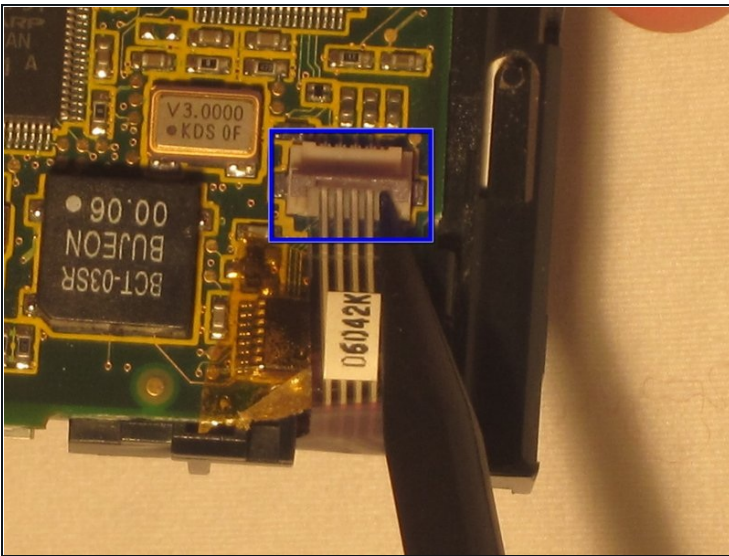
- Using a spudger, carefully pry open the front and back covers along the side seam.

## Step 4



- Unhook the battery cable from the motherboard and remove the battery.

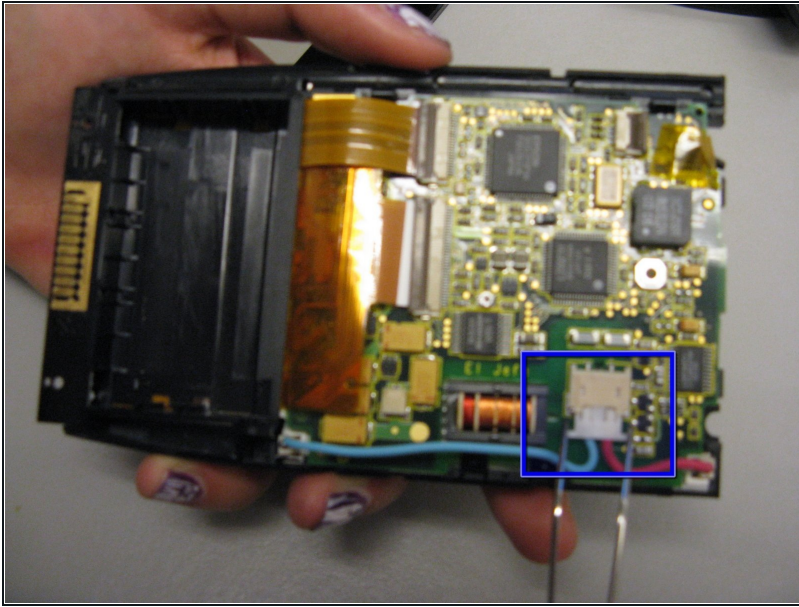
## Step 5



- Use tweezers to pull up the ZIF connector (the brown plastic tab) on the back of the motherboard and disconnect the tail, which looks like a ribbon.
- Once the ZIF connector is unattached, remove the clear screen cover using a spudger. Some force may be necessary.

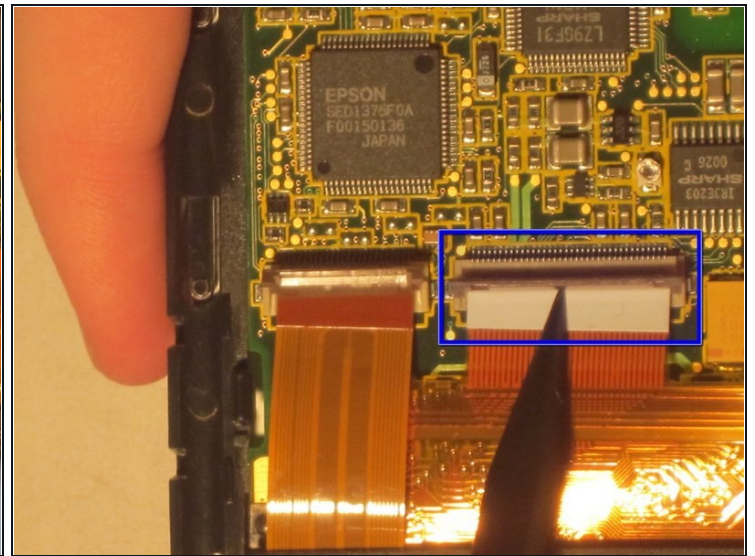
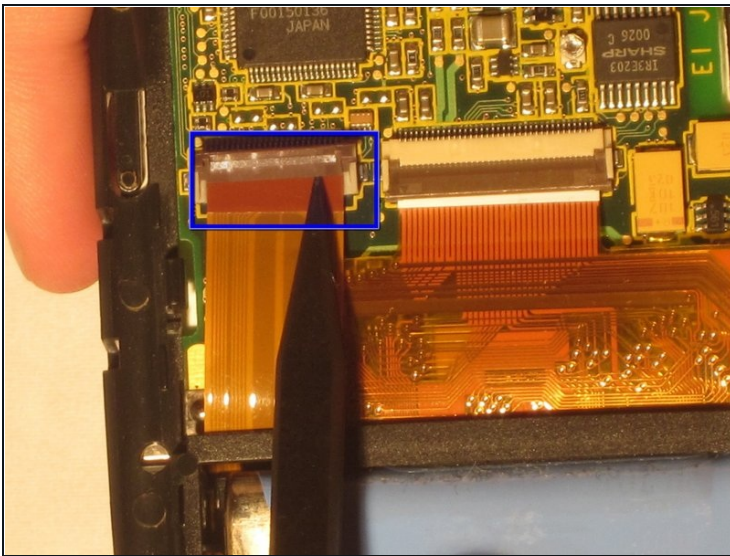


## Step 6



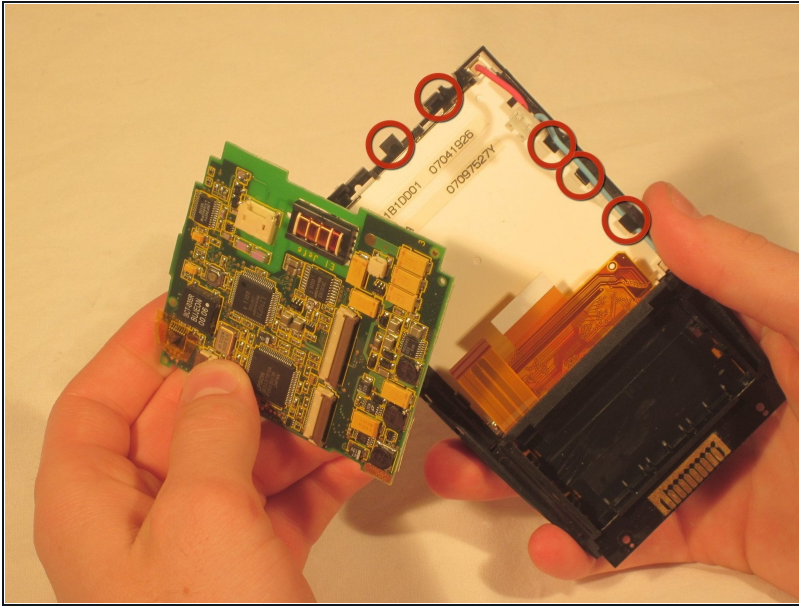
- Using tweezers unhook the blue and red screen cables where they connect to the motherboard.

## Step 7



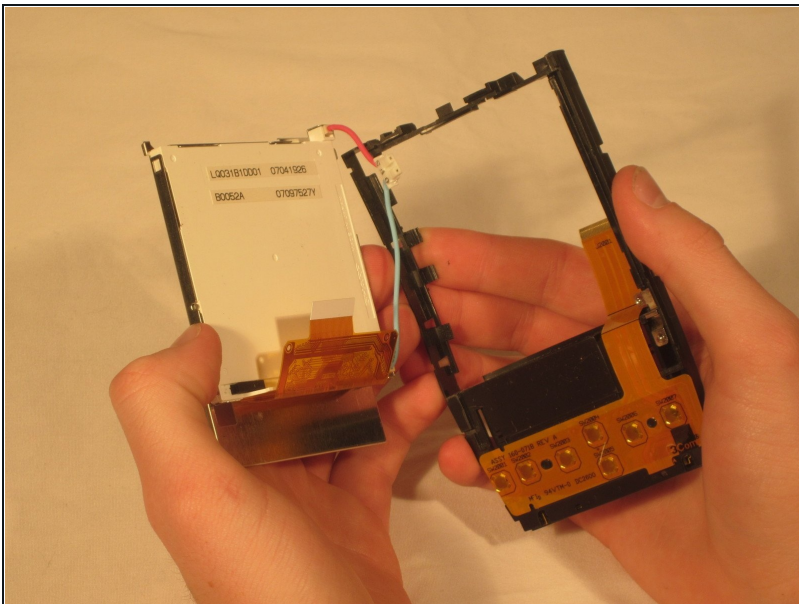
- Using tweezers, lift up the other two ZIF connector tabs to disconnect the tails.

## Step 8



- Gently pull the black clips on the inside case to detach the motherboard from the device. Pull the motherboard out towards the bottom left corner.

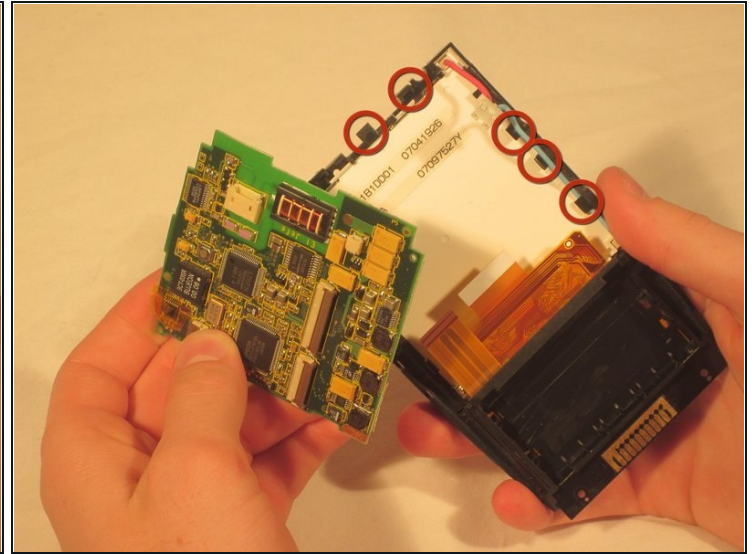
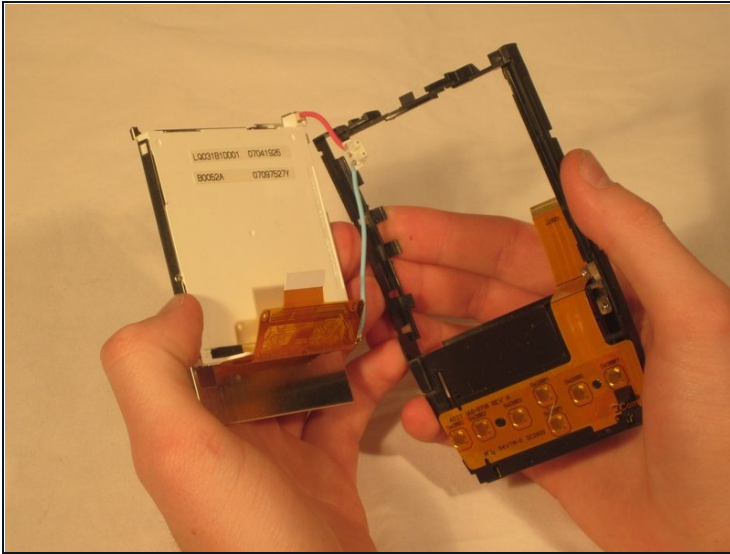
## Step 9



- Pull the screen out from the front.

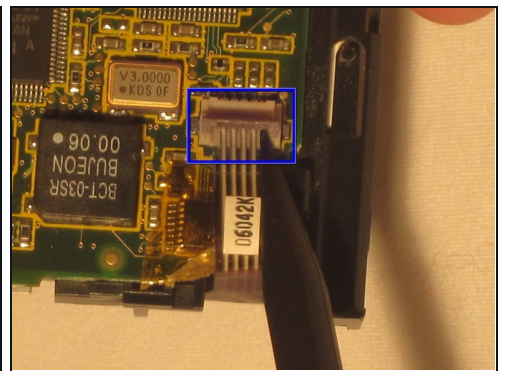
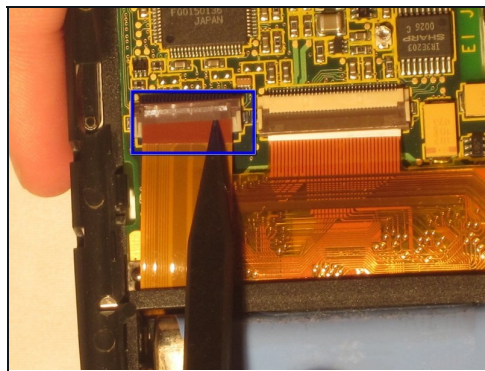
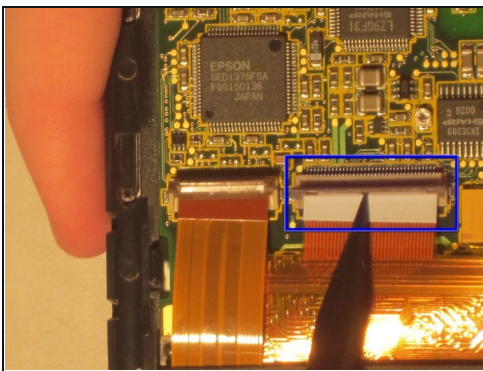


## Step 10



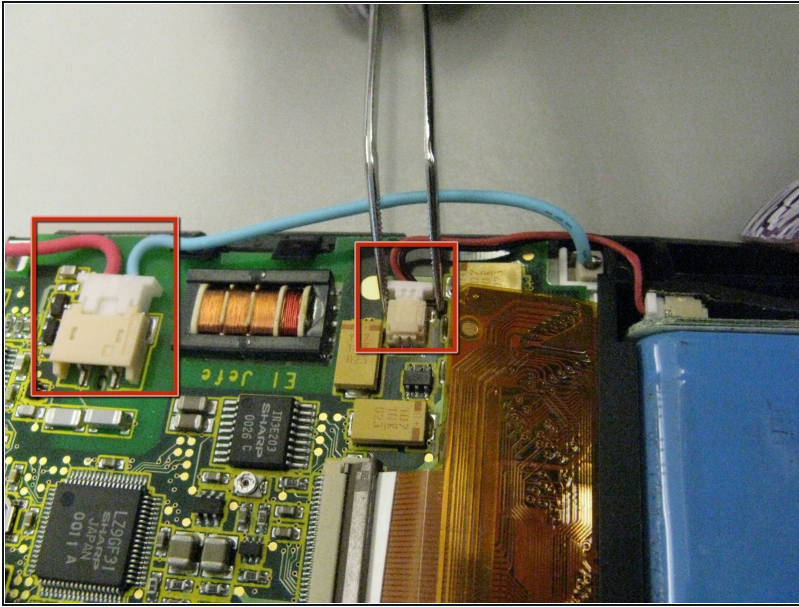
- Place the new screen in from the front.
- Insert the motherboard back into the casing so it fits back under the black snaps. The ZIF connector tabs should realign with their respective tails at the bottom.

## Step 11



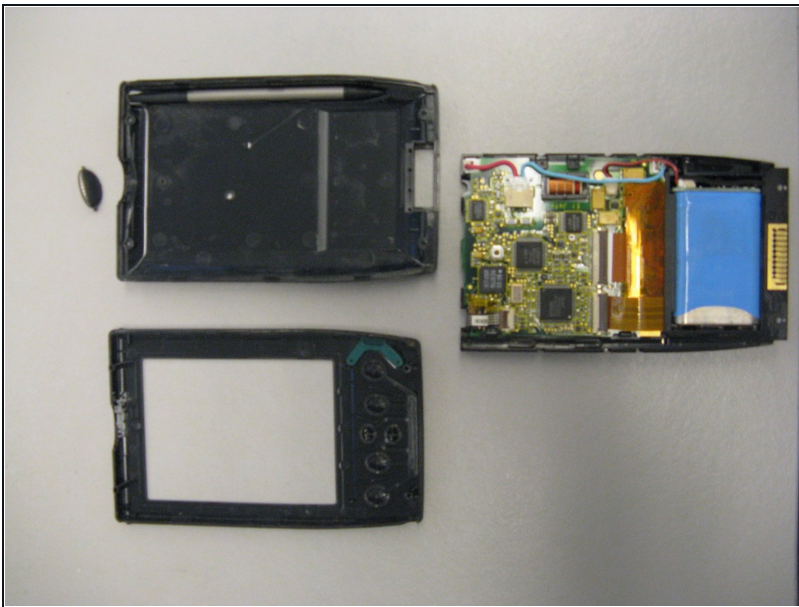
- Place the plastic screen cover back on the front of the device and reconnect the three ZIF connector tails.

## Step 12



- Put the battery back in place.
- Reconnect the battery and screen cables to the motherboard.

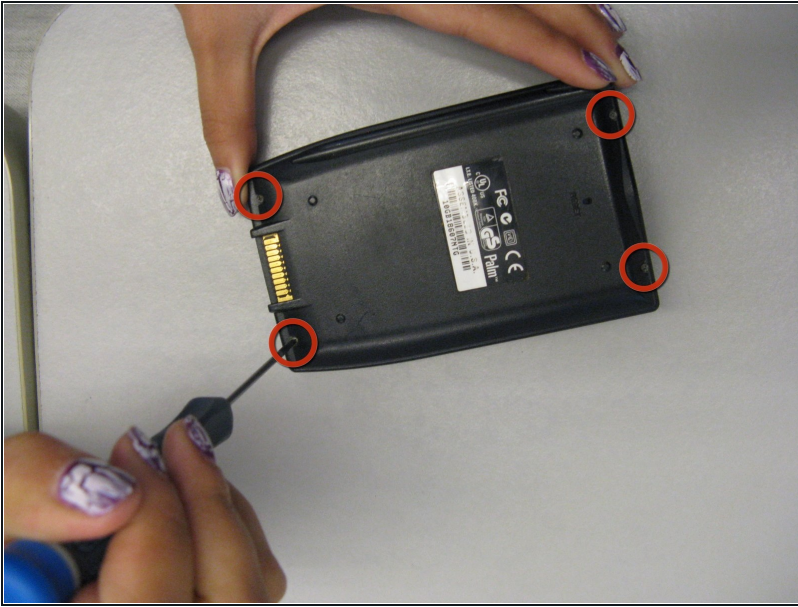
## Step 13



- Snap the front and back covers back over the device.
- ① Make sure you reinsert the sensor cover at the top if it fell out.



## Step 14



- Screw in the four screws, the long ones at the top and the short ones at the bottom of the device.

## Step 15



- Reattach the device cover at the hinge points.

---

To reassemble your device, follow these instructions in reverse order.