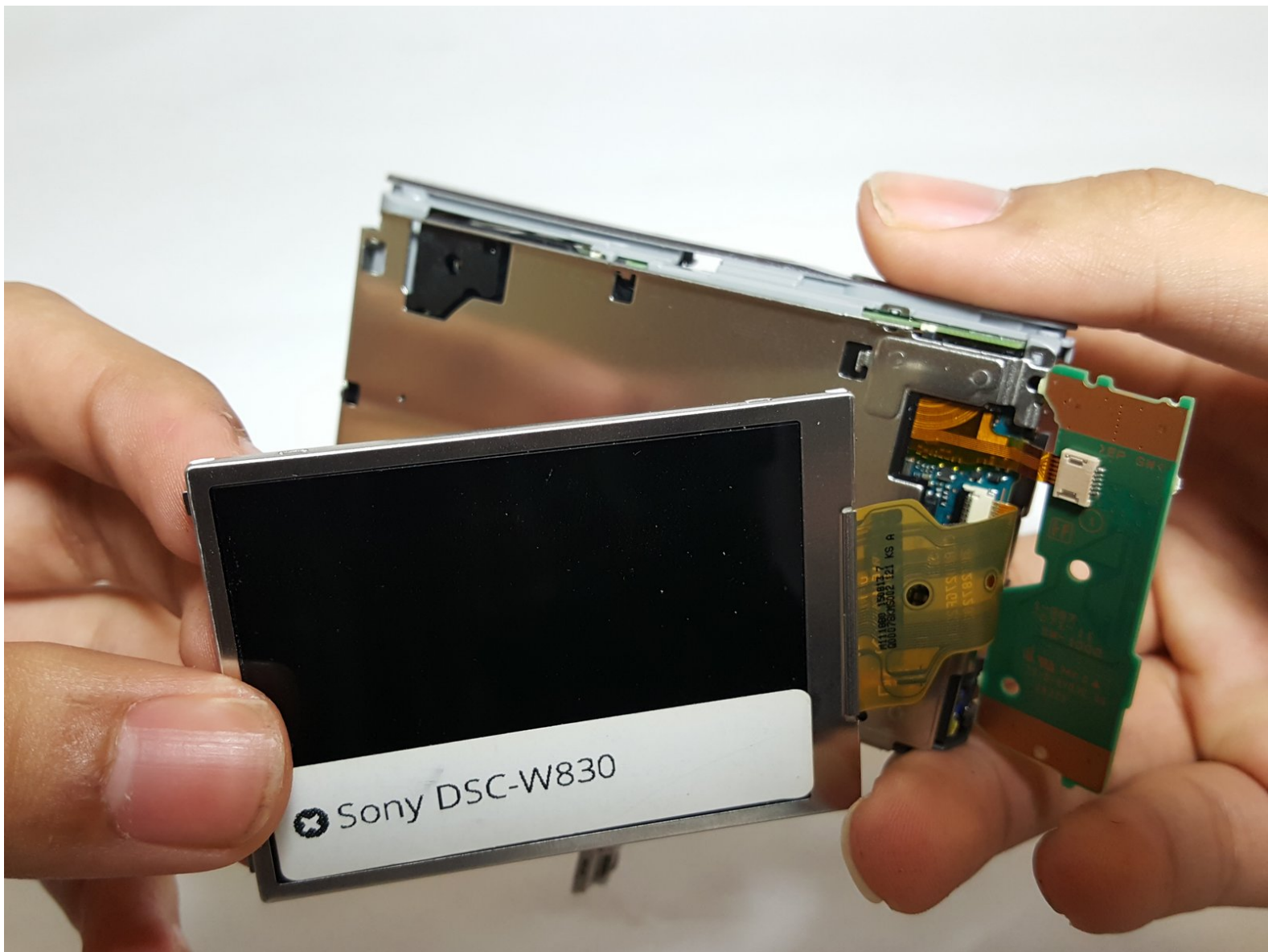




# Sony Cyber-Shot DSC-W830 LCD Replacement

This guide will show you the correct way to break the camera down and remove the LCD from the mother board.

Written By: Addyson Salalila



## INTRODUCTION

This will show you how to disassemble the camera and show you how to safely and successfully remove the LCD.

---

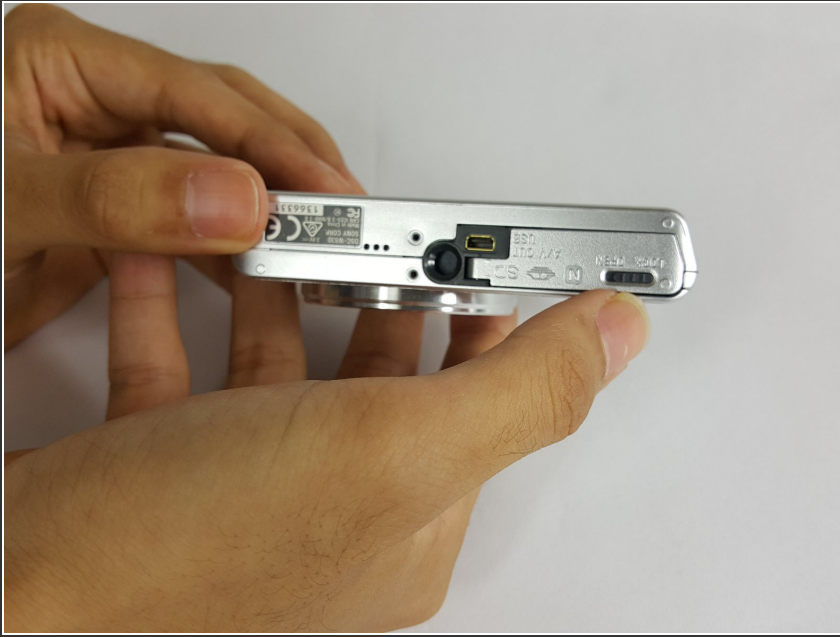
### TOOLS:

- [Phillips #000 Screwdriver](#) (6)

#### Screws

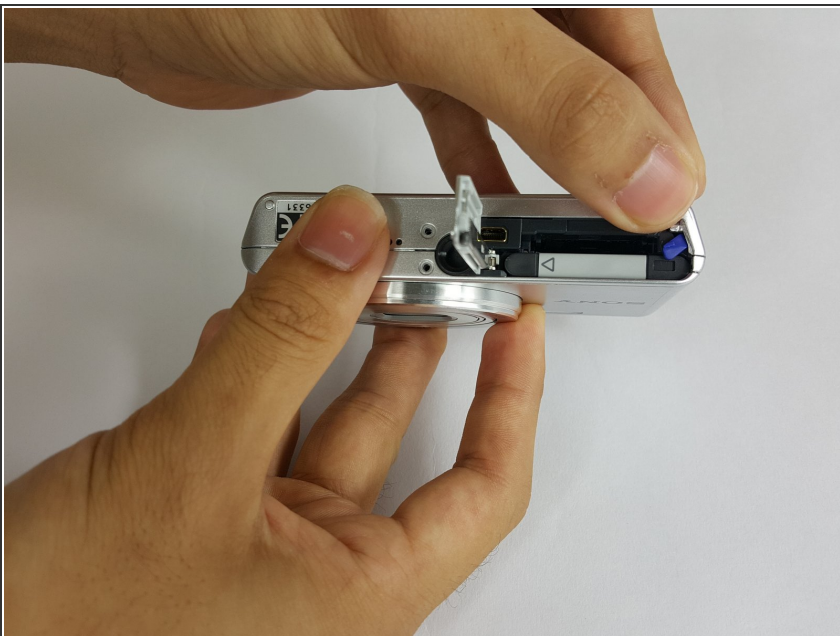
- [Heavy-Duty Spudger](#) (1)
  - [iFixit Opening Tools](#) (1)
-

## Step 1 — Battery



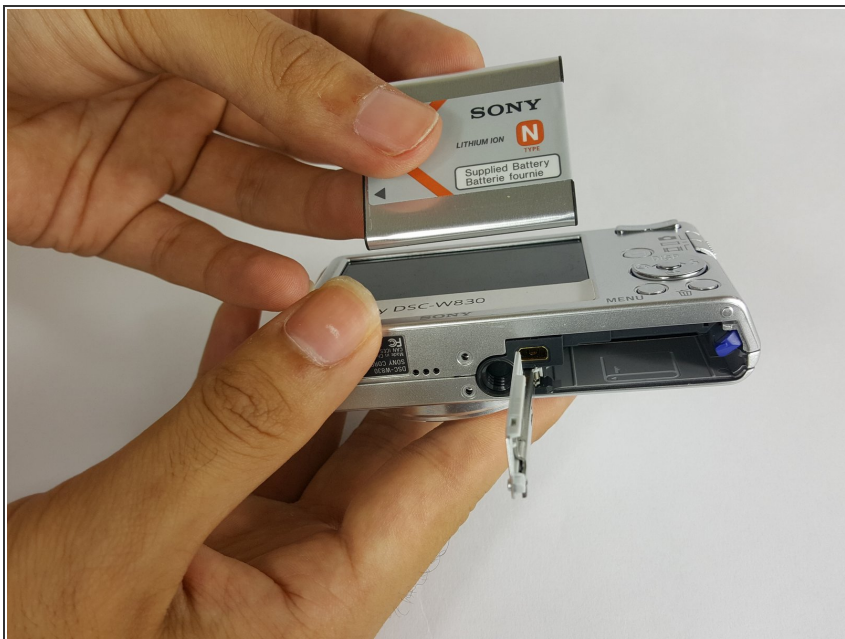
- Slide the lock at the bottom of the camera to "Open".
- ❗ The door to the battery pack is spring loaded.

## Step 2



- Slide the blue clip up and away from the battery.

## Step 3



- Remove the battery.

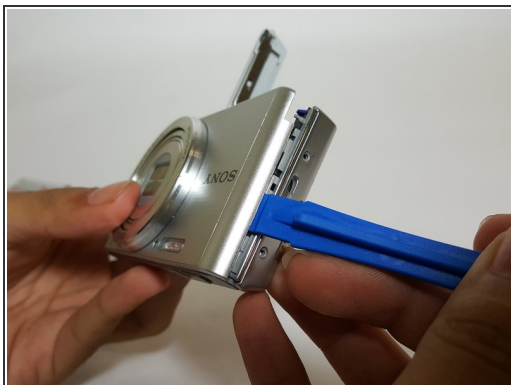
## Step 4 — Front and Back Panel



- Remove the six 3.5mm Phillips #000 screws.
- Rotate the lock away from the camera.

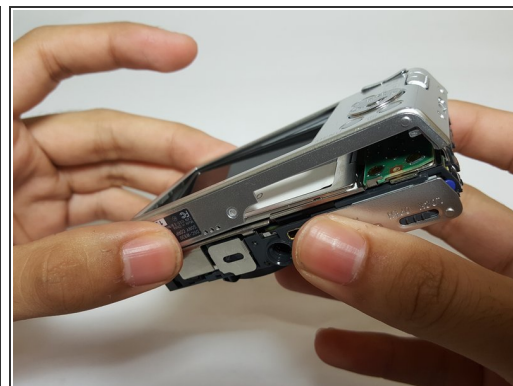
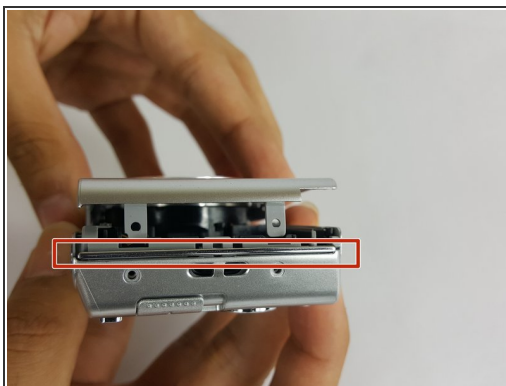
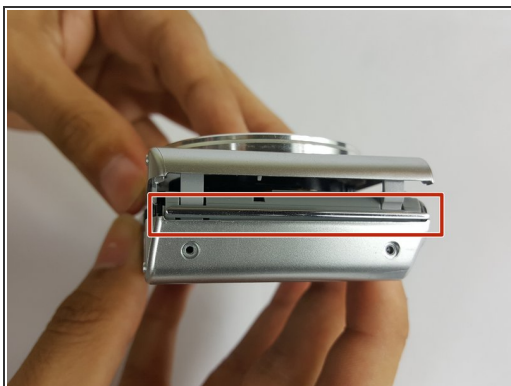


## Step 5



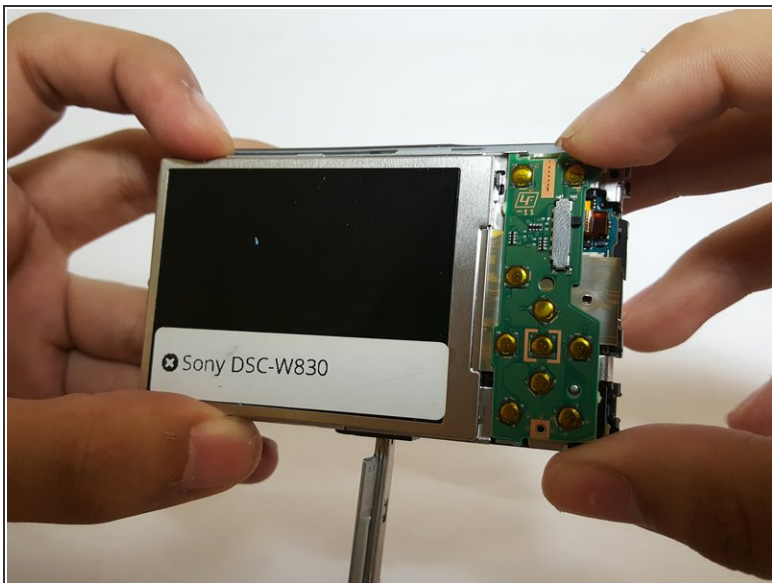
- Pry the device open with the plastic opening tool.
- ⓘ There are two clips that help prevent the front panel from separating.

## Step 6



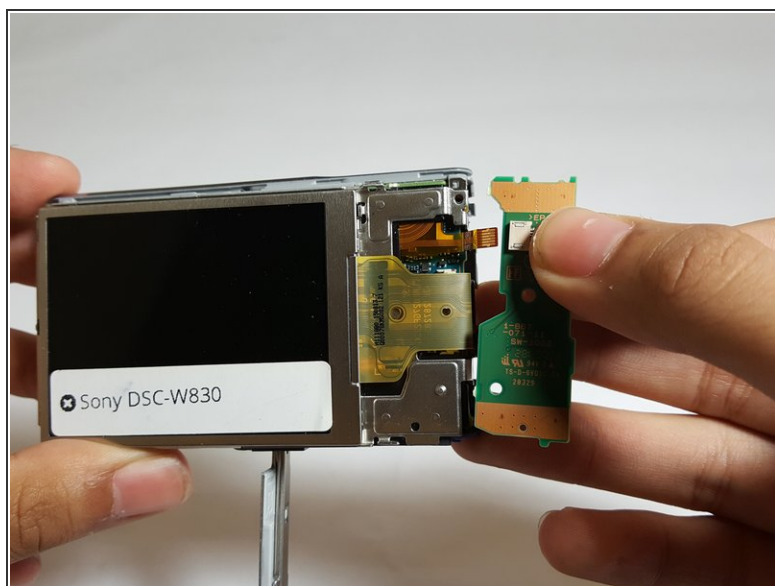
- Remove the two plastic spacers between the front and the back panels.
- ⓘ The spacers may fall out when removing the panels.
- Carefully remove the back panel.

## Step 7 — Button Board



- Gently release the button board from the clips.
- ⓘ Be careful when lifting the button board; the ribbon cable will still be attached.

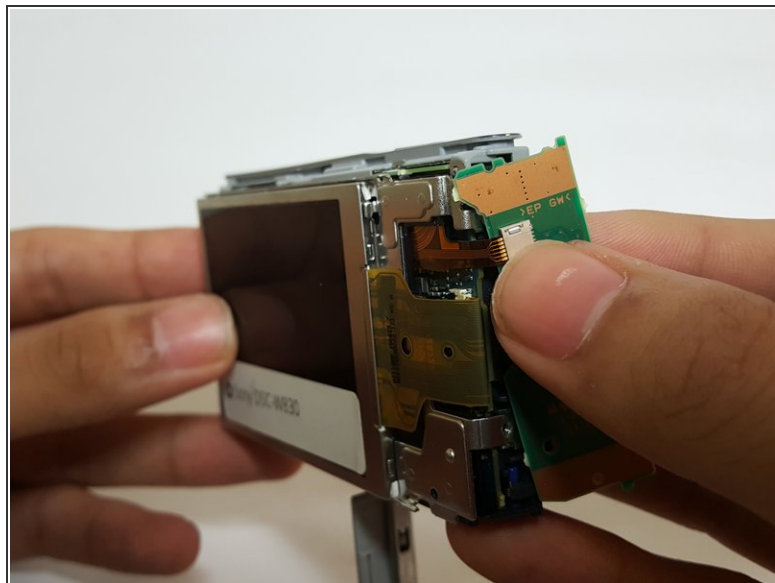
## Step 8



- Disconnect the no-fuss ribbon cable by gently pulling it out of the button board.



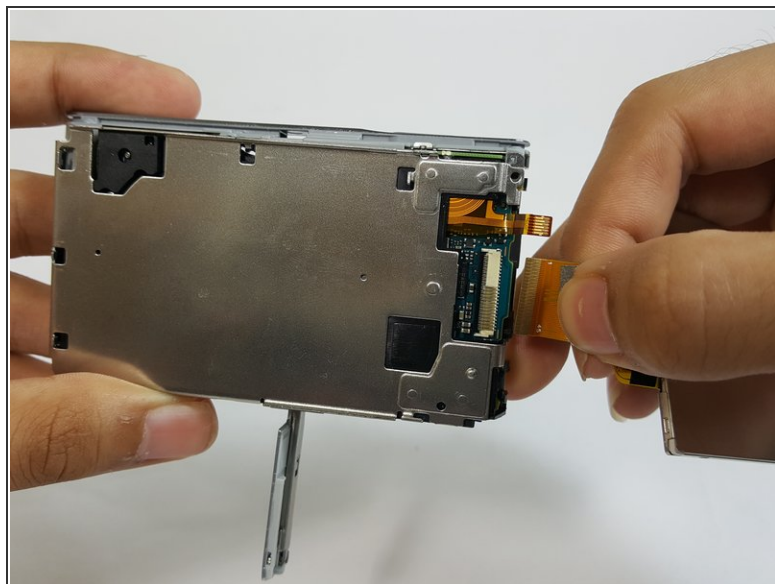
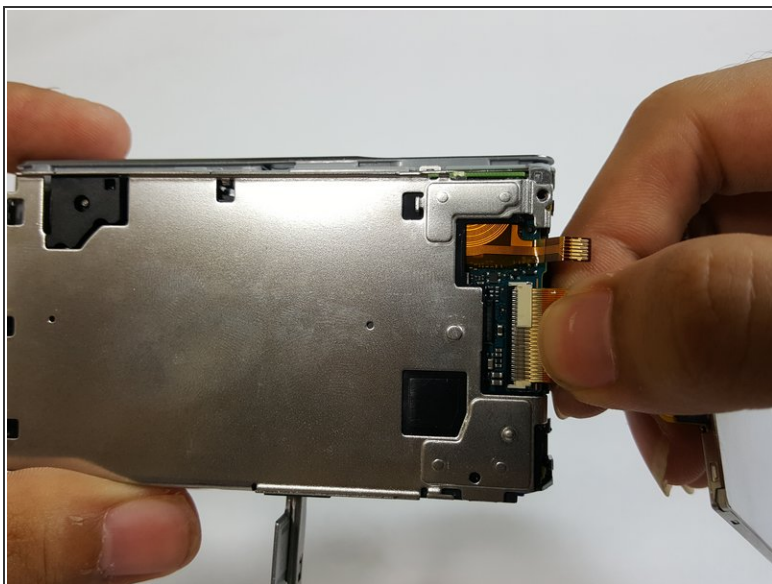
## Step 9 — LCD



- Push the bottom right corner of the LCD screen out and slide it to the right to release it from the clips.

**i** Be careful when lifting the LCD screen; the ribbon cable will still be attached.

## Step 10



- Grasp the no-fuss ribbon cable and gently pull it out from the motherboard.

To reassemble your device, follow these instructions in reverse order.