



# Astak Mole Antenna Replacement

This is a replacement guide for a damaged antenna input inside the camera.

Written By: Meshari Alkhelaiwi



## INTRODUCTION

If you getting a new antenna doesn't work, there might be a problem with the antenna connection inside the camera. This guide will show you how to replace input cable that attaches the antenna to the motherboard.



### TOOLS:

- [Phillips #1 Screwdriver](#) (1)
  - [Spudger](#) (1)
-

## Step 1 — Lower Case



- Remove the four bottom tabs in order to access the bottom screws.

## Step 2



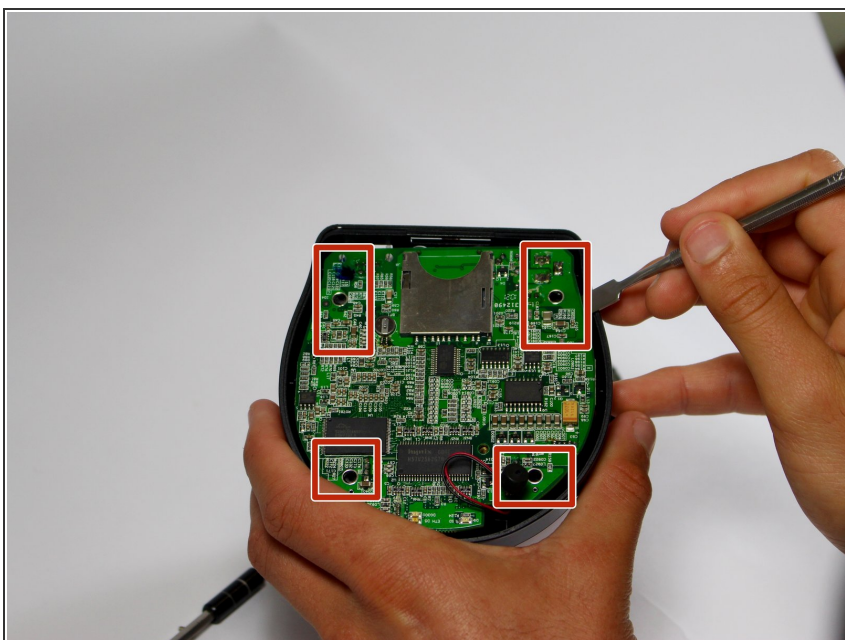
- Remove all four 14 mm Phillips #1 screws.

## Step 3



- Remove the SD card.

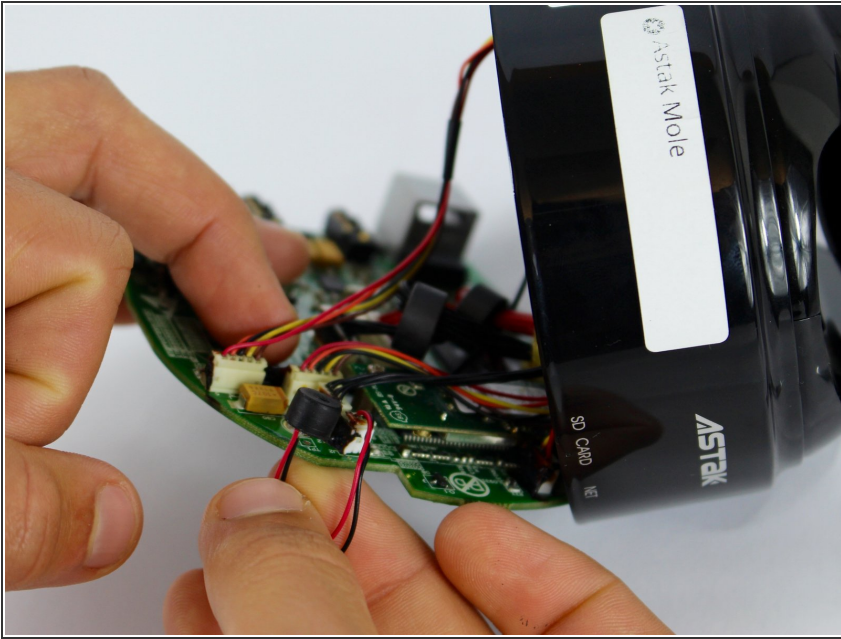
## Step 4



- Pry up the motherboard on the four points using a spudger.
- ⚠ The regular black nylon spudger should be used whenever possible, especially around sensitive internal components.



## Step 5



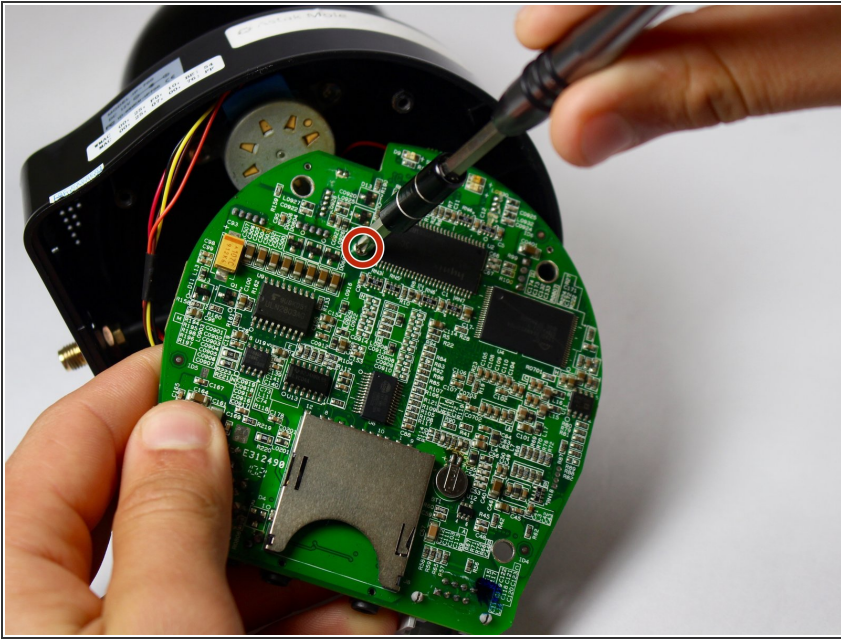
- Gently pull back the motherboard to expose many of the component's wired connections.

## Step 6 — Antenna



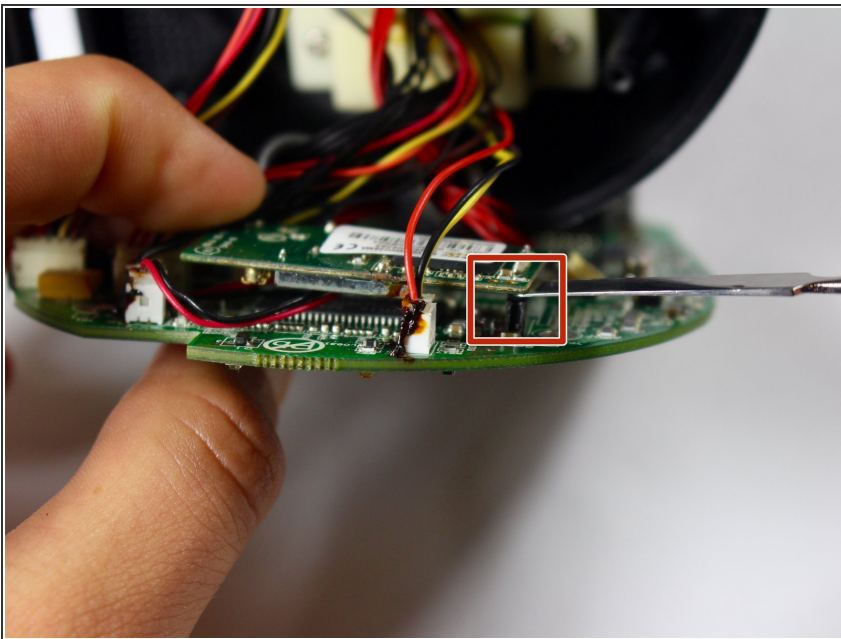
- Unscrew the antenna in a counter-clockwise rotation.

## Step 7



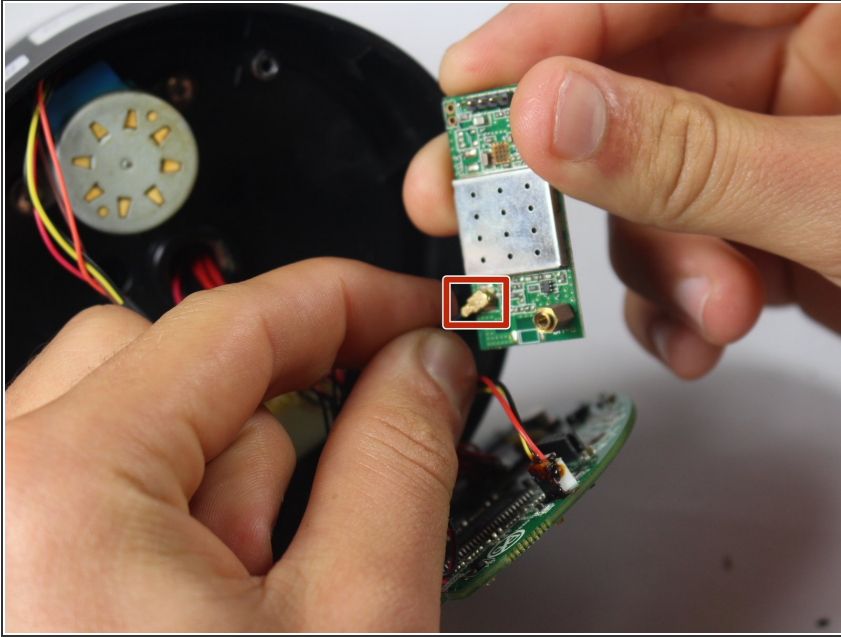
- Take out the screw holding the antenna wire with the PH1 size Phillips head bit.
- *Screw length: 5.3mm*

## Step 8



- Gently pry open the circuit board attached to the antenna wire using a metal spudger.
- ⚠ The regular black nylon spudger should be used whenever possible, especially around sensitive internal components.

## Step 9



- Remove the antenna female end from the motherboard.

To reassemble your device, follow these instructions in reverse order.