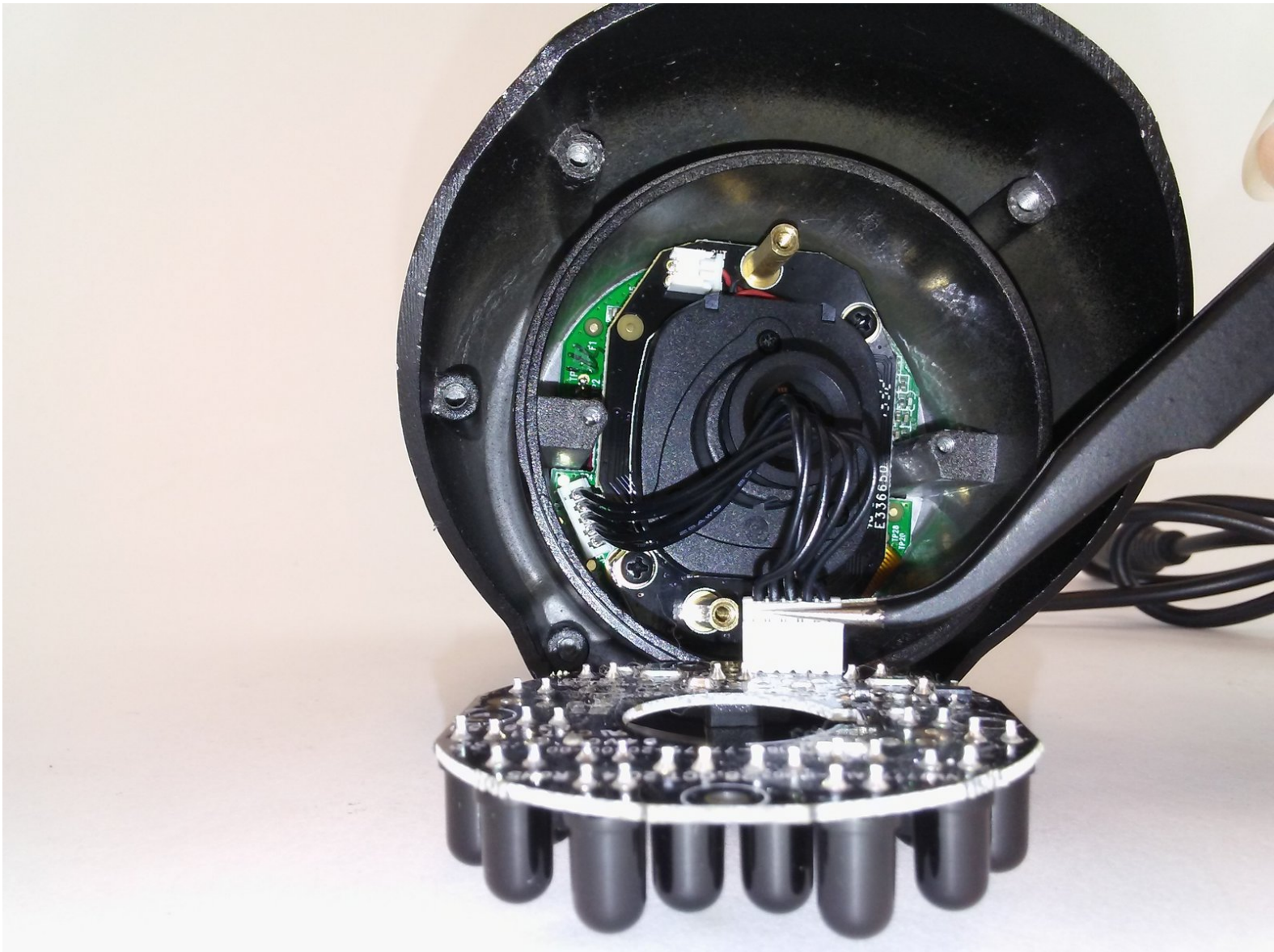




# Lorex LW2742 Night Vision IR LEDs Replacement

Replacing the Night Vision IR LEDs in your Lorex LW2742 security camera

Written By: craig crisci



---

## INTRODUCTION

Is your night vision too dark to view, or not working at all? Replacing your camera's Night Vision IR LEDs might solve these problems.

---

### TOOLS:

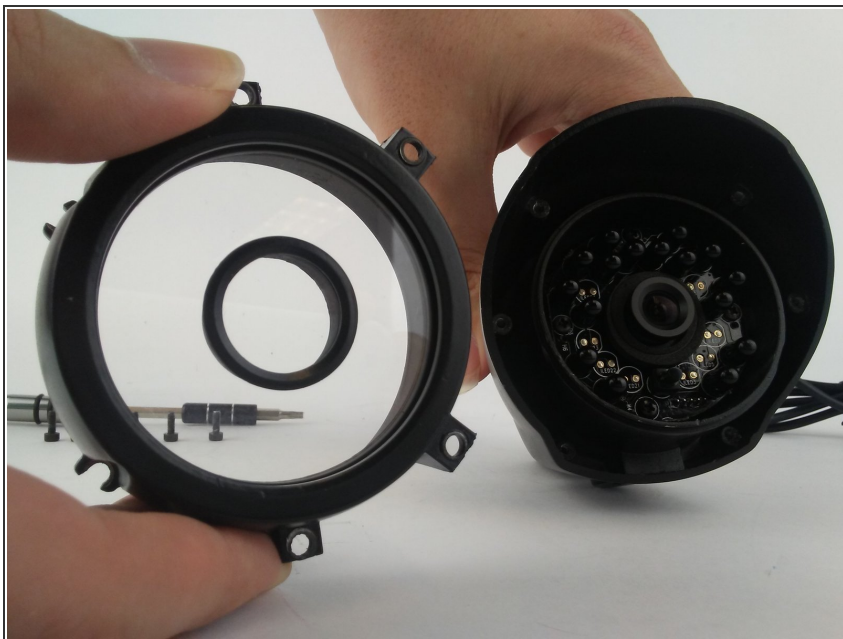
- [Phillips #0 Screwdriver](#) (1)
  - [Phillips #1 Screwdriver](#) (1)
  - [Tweezers](#) (1)
  - [TR10 Torx Security Screwdriver](#) (1)
-

## Step 1 — Night Vision IR LEDs



- Remove the six 10mm Torx T10 screws on the camera face.

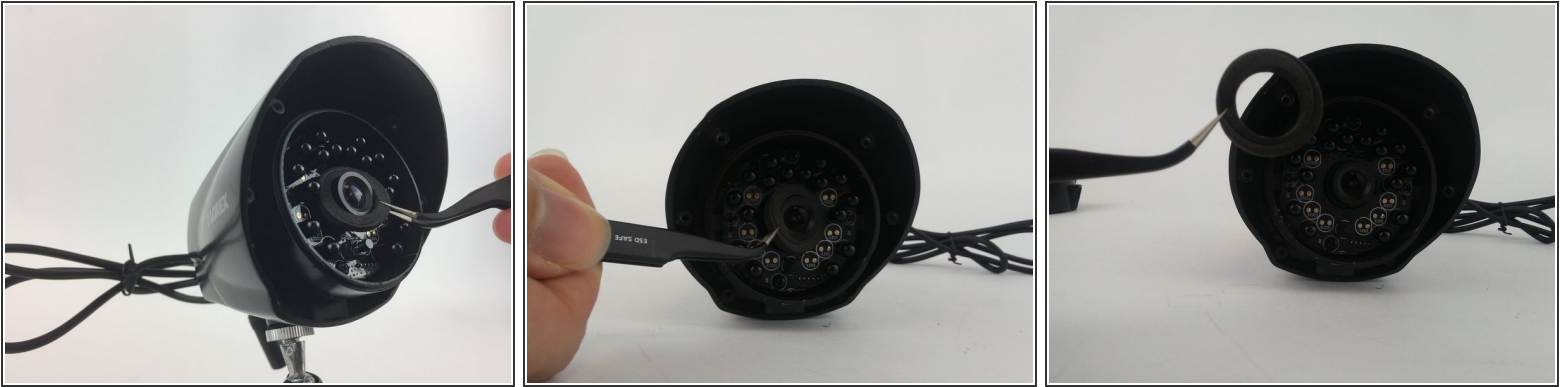
## Step 2



- Remove the exterior lens cover.



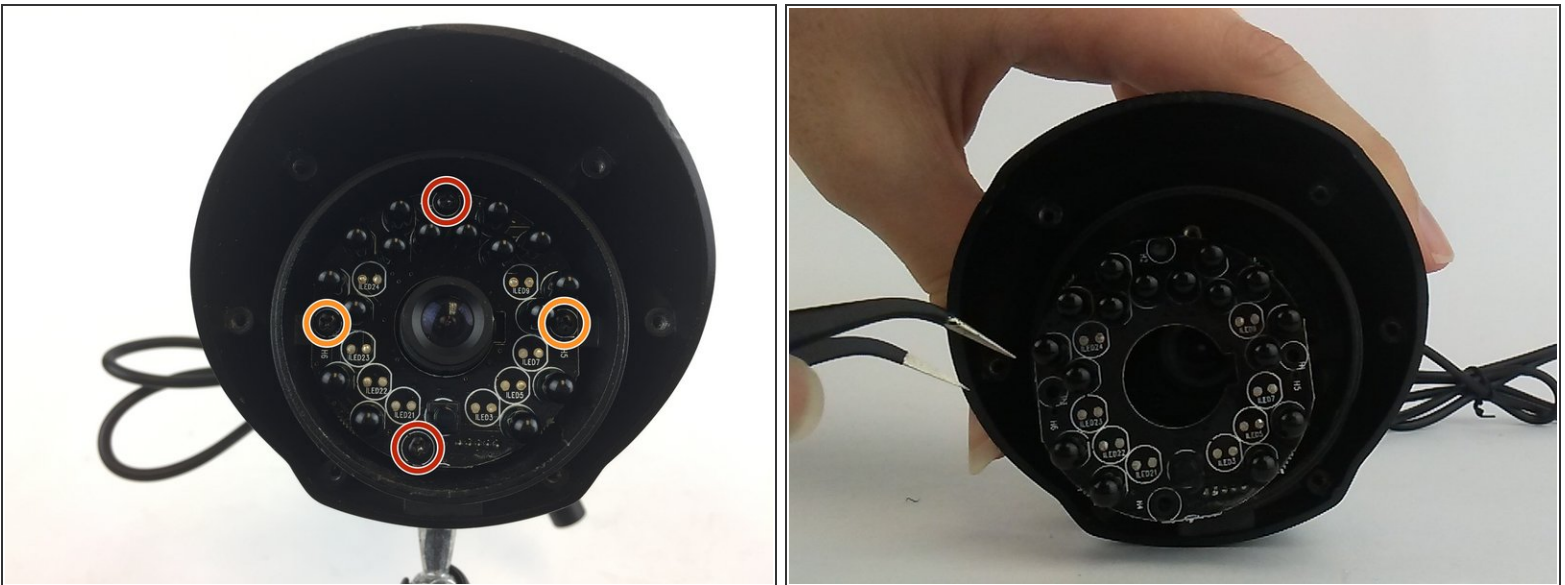
### Step 3



- Remove the LED foam ring with tweezers.

**⚠ Be aware, the electronic components of the LED board may be compromised if you use your fingers instead of tweezers for this step.**

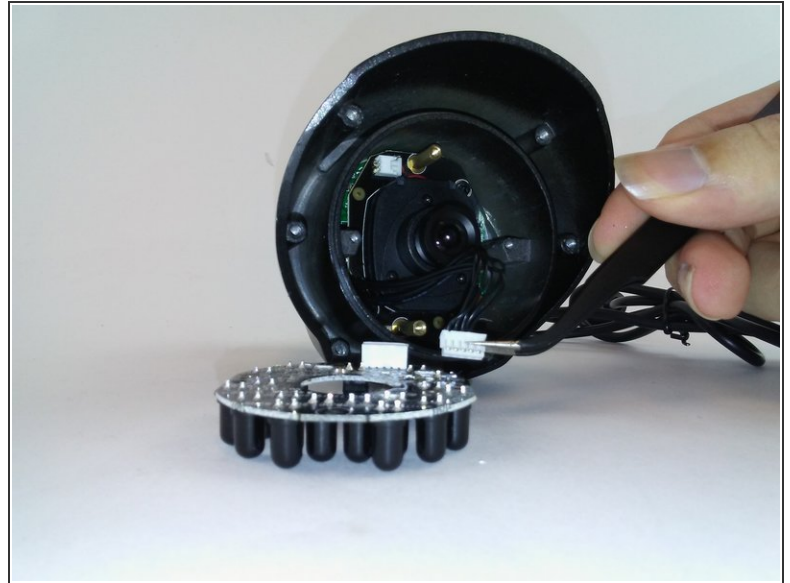
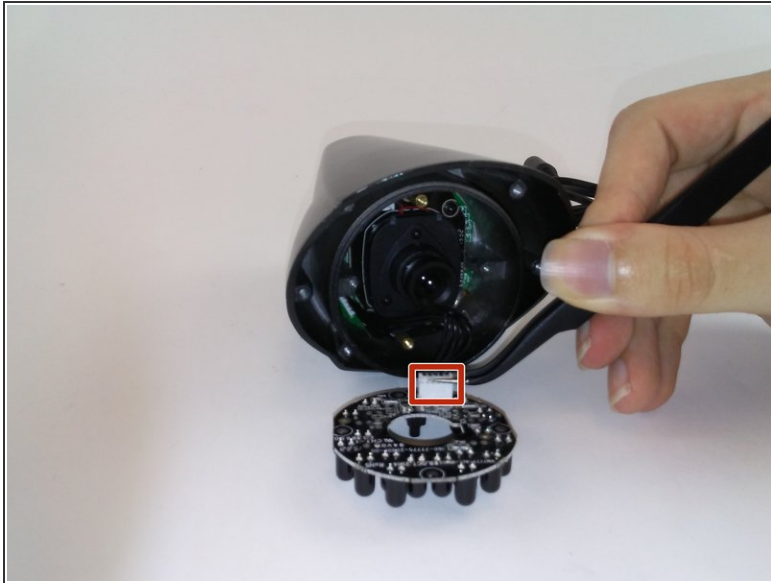
### Step 4



- Remove the two 5mm Phillips #1 screws.
- Remove the two 8mm Phillips #0 screws.

**☑ When reassembling, tighten the top and bottom 5mm screws first, followed by the left and right 8mm screws.**

## Step 5



- Use tweezers to unclip the cables to the LED board

To reassemble your device, follow these instructions in reverse order.