



Blackberry Curve 8320 Keyboard Replacement

This guide will show you how to: (1) Remove the...

Written By: Yegor Pomortsev



INTRODUCTION

This guide will show you how to:

- Remove the battery
- Remove the front panel
- Replace the keyboard



TOOLS:

- [iFixit Opening Tool](#) (1)
 - [T5 Torx Screwdriver](#) (1)
-

Step 1 — Front Panel

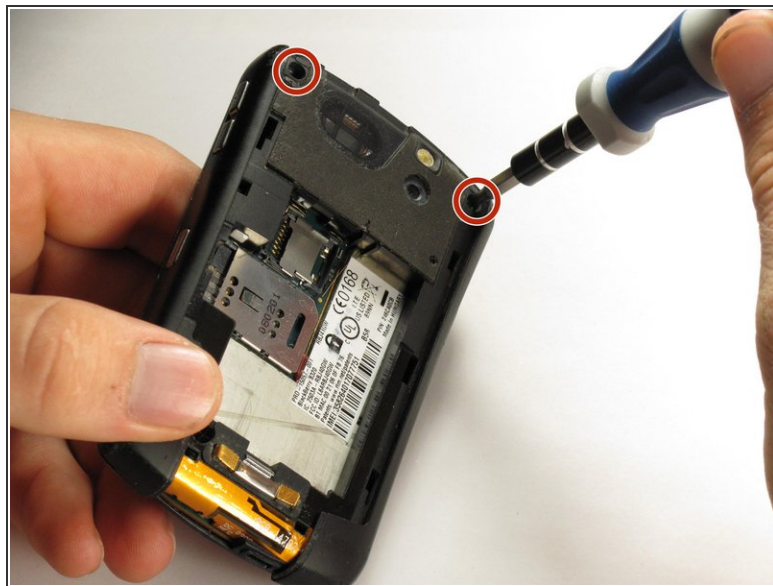


- Use a plastic opening tool to gently pry the bottom cover loose.

⚠ Do not use excessive force at risk of damaging the antenna, which is under this casing.

- Pull the cover from the front of the phone after the back is loose.

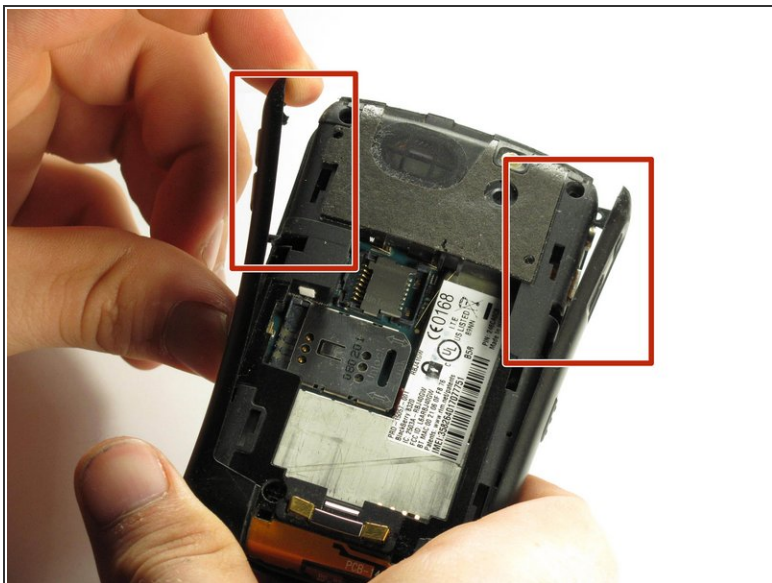
Step 2



- Remove the two top screws with a T5 Torx screwdriver.

i The screws are 8mm long.

Step 3

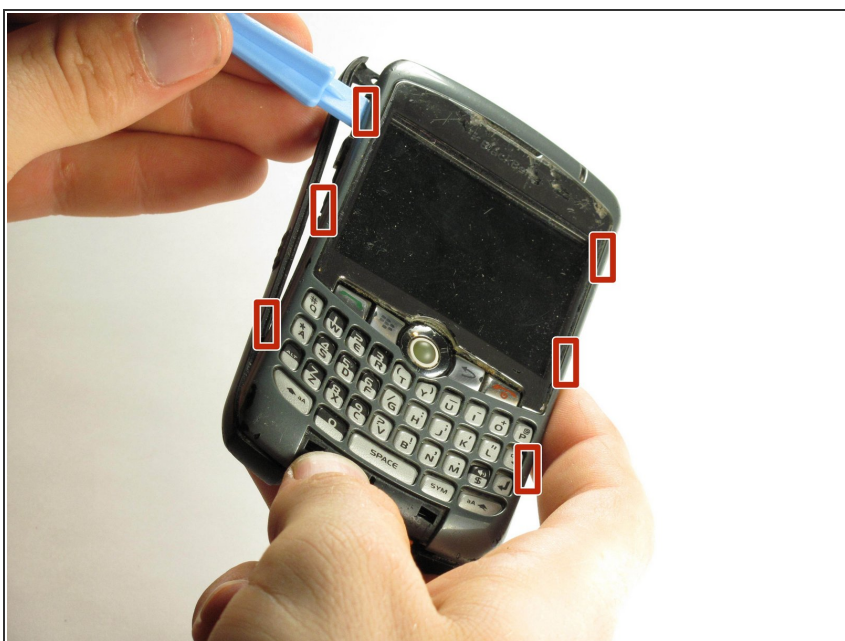


- Gently pry off the side casings from the top.

⚠ The side casings cannot be fully removed yet because they are screwed on at the bottom.

- You will not need to remove the sides on the bottom.

Step 4



- Use a plastic opening tool to detach the securing clips holding the the front panel in place.

ⓘ There are six securing clips total.

Step 5



- Carefully remove the front panel.
- ⓘ You may need to apply some force in removing because the front panel is attached to the rest of the device with adhesive.

Step 6 — Keyboard



- Remove the keyboard.

⚠ Be careful not to bend or fold the keyboard, as it can break easily.

To reassemble your device, follow these instructions in reverse order.