



Braven BRV-HD Battery Replacement

This guide will allow you to be able to locate and replace the battery for the Braven BRV-HD Bluetooth Speaker.

Written By: Courtney Van Buren



INTRODUCTION

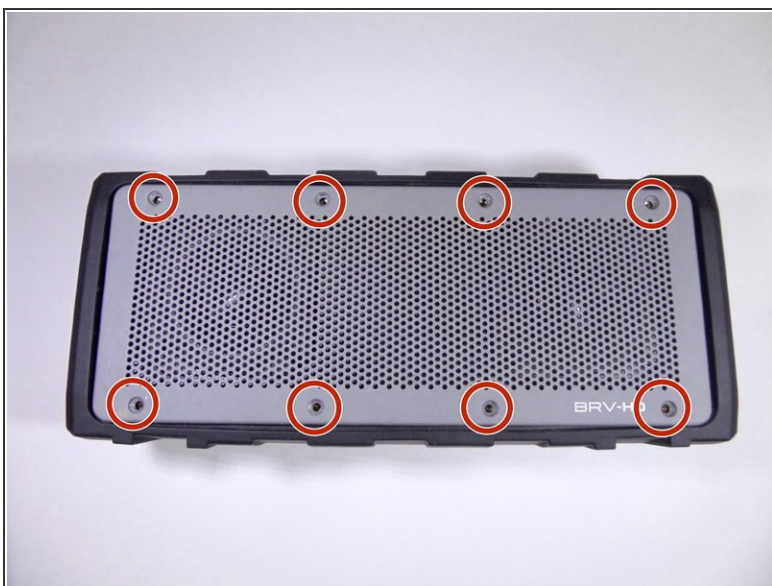
The following step-by-step guide will show how the battery can be located and replaced.




TOOLS:

- [2mm Hex Key](#) (1)
 - [iFixit Opening Tools](#) (1)
 - [JIS Driver Set](#) (1)
-

Step 1 — Battery



- Placing the device on its back with the BRV-HD logo facing up, remove the eight 5mm hexagon 2.0 screws on the front panel.

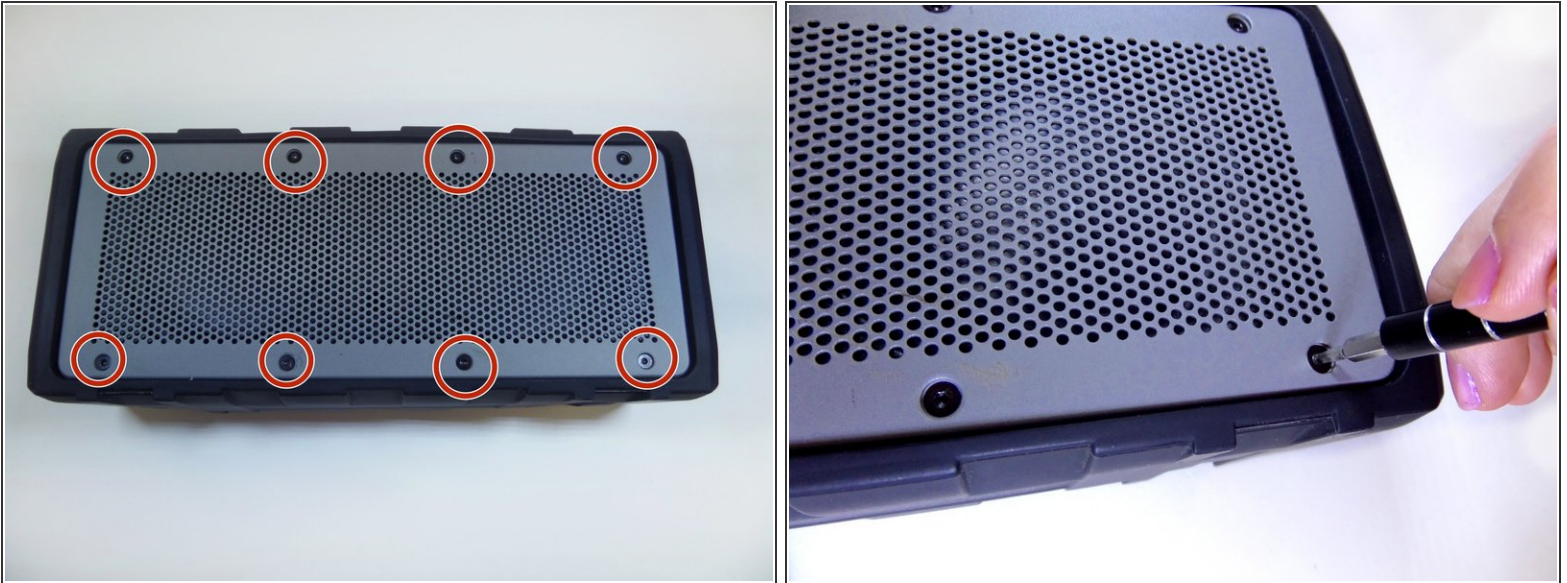
 Make sure the device is turned off before starting.

Step 2



- Lift the front panel off of the speaker using a plastic opening tool.

Step 3



- Placing the device with the back panel facing up, remove the eight 5mm hexagon 2.0 screws from the back panel.

Step 4



- Lift the back panel off of the device with a plastic opening tool.

Step 5



- Turning the device on its side, unscrew the four 15mm hexagon 2.0 screws on the charging port panel.

Step 6



- Remove the outer rubber flap and the plastic side port panel.

Step 7



- Place the device on its front.
- Loosen the four 12mm Phillips screws in the four corners with a J1 screwdriver.
- Loosen the two 8mm Phillips screws in the center with a J1 screwdriver.
- ⓘ These screws are difficult to reach and will require a screwdriver extension piece.

Step 8



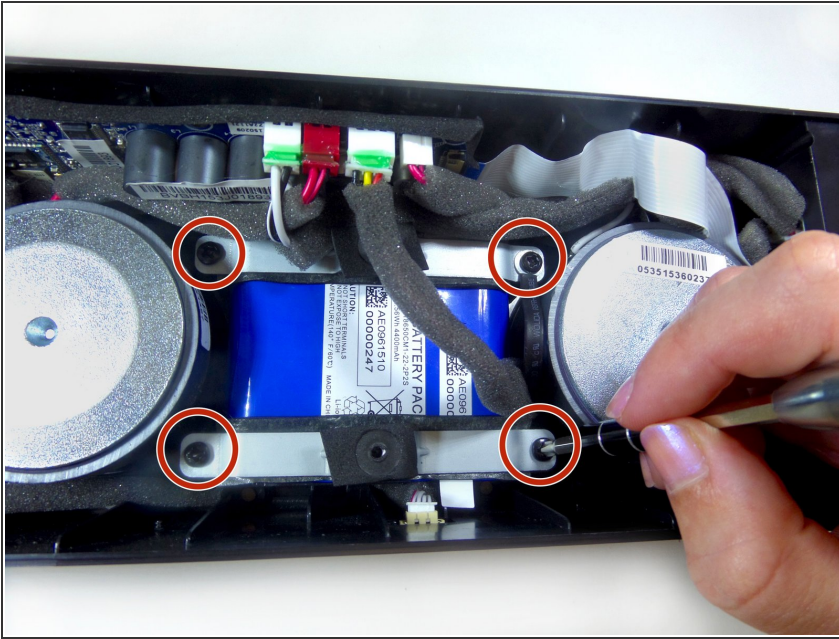
- Pull off the rubber sleeve surrounding the speaker using your hands.
- ⓘ There is adhesive binding the sleeve to the speaker and force will be required to remove the sleeve.

Step 9



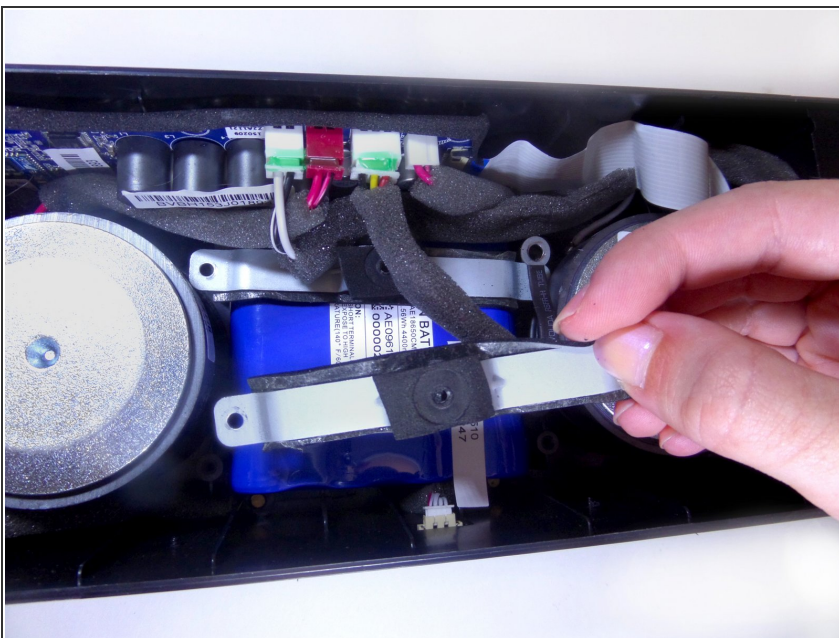
- Lift the black covering off of the speaker using both hands.
- ⓘ Loose screws that you were unable to remove with the screwdriver will be removed when you lift off the black covering.

Step 10



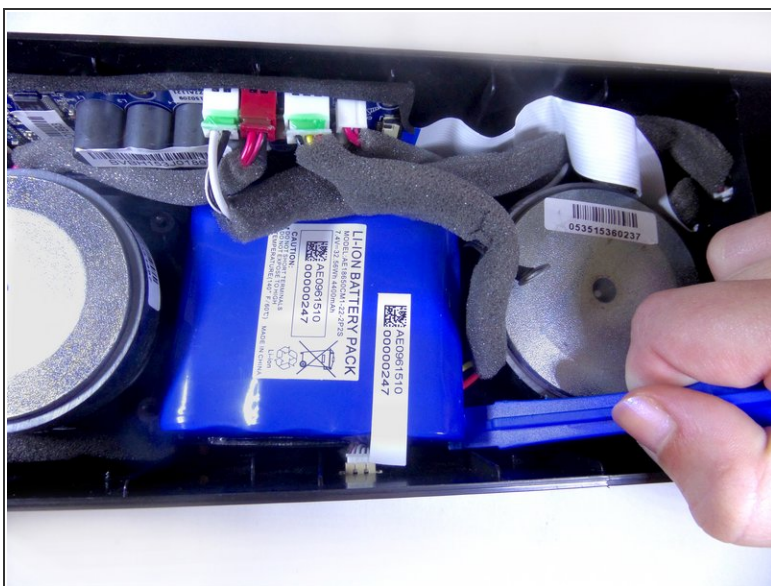
- Remove the four 12mm Phillips screws securing the two battery brackets with a J1 screwdriver.
- ⓘ Move any wires aside to have better access to the screws securing the battery.

Step 11



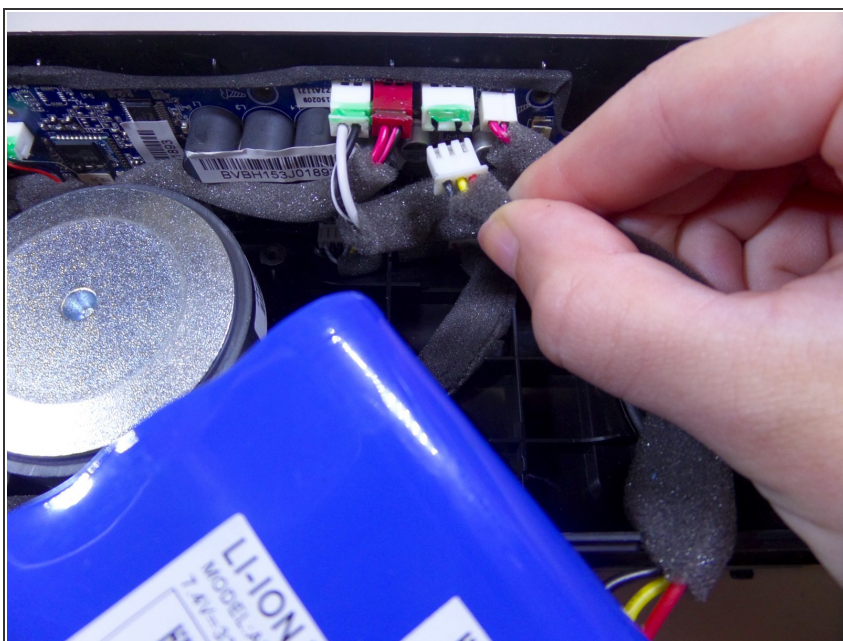
- Remove the two brackets that hold down the battery using your hands.

Step 12



- Use the plastic opening tool to lift up the battery.
 - Remove the battery using your hands.
- i** The wires connecting the battery to the motherboard are still plugged in. Avoid pulling on the battery or these wires may break.

Step 13



- Disconnect the wire attaching the battery to the motherboard.
- i** There is green glue on the wire ports preventing the wires from falling out. Peel and remove this glue as necessary.
- ⚠** Be careful when pulling out the wires from their ports. The metal stems attached to the ports can break. A spudger or tweezers may help.

To reassemble your device, follow these instructions in reverse order.