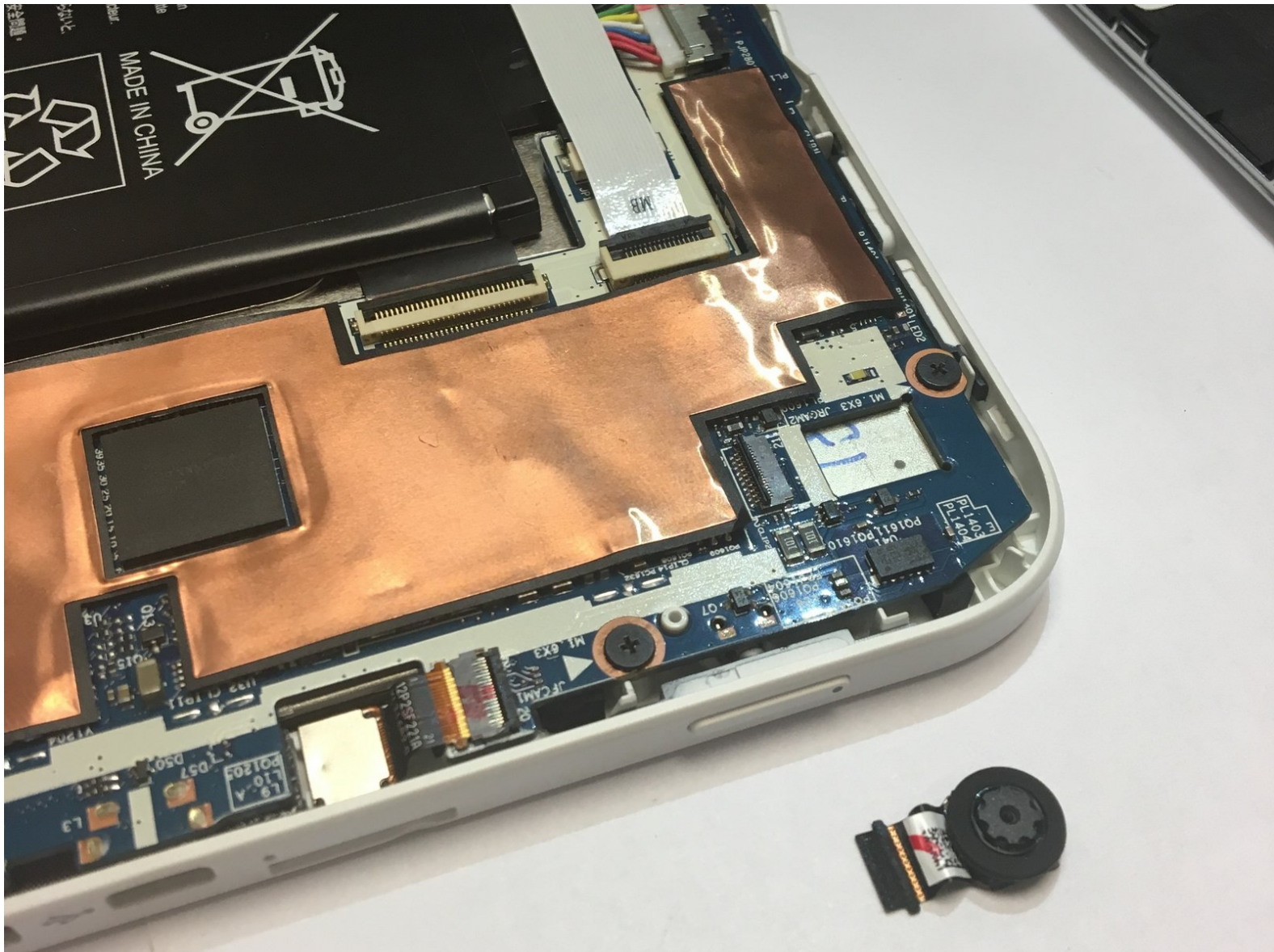




# Acer Iconia W3-810 Rear-Facing Camera Replacement

This guide will show you how to fix the rear camera.

Written By: Adam Fierce



---

## INTRODUCTION

Picks up after the back pannel and battery guides, this will show you how to remove and replace the rear facing camera incase of failure. This may need to be replaced in cases of damage to the device.

---

### TOOLS:

- [iFixit Opening Tools](#) (1)
-

## Step 1 — Back Panel




- Place the tablet face down on a flat surface with the charger facing toward you.

## Step 2

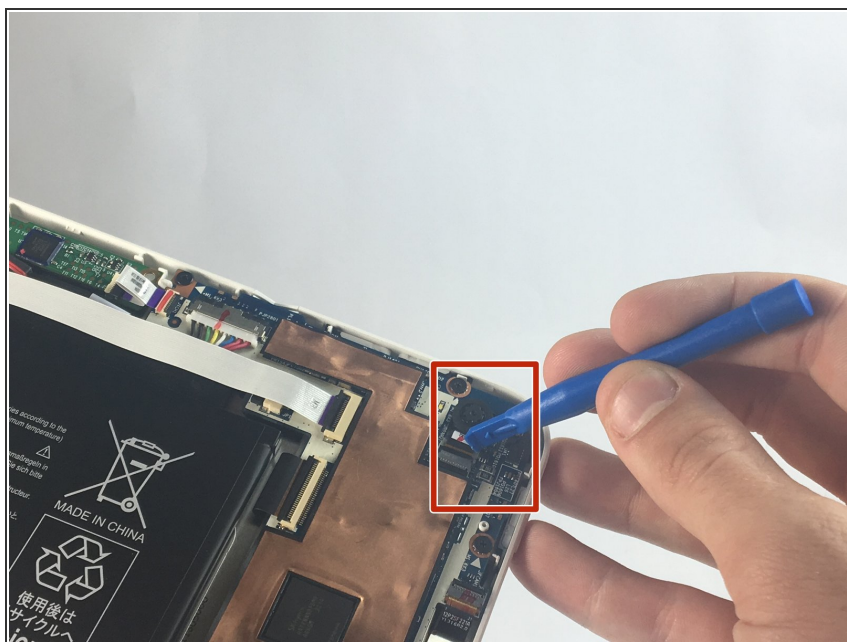


- Use a plastic opening tool to pry the back panel off of the device.

 Be careful to not use the plastic opening tool near the charging dock or any media ports.

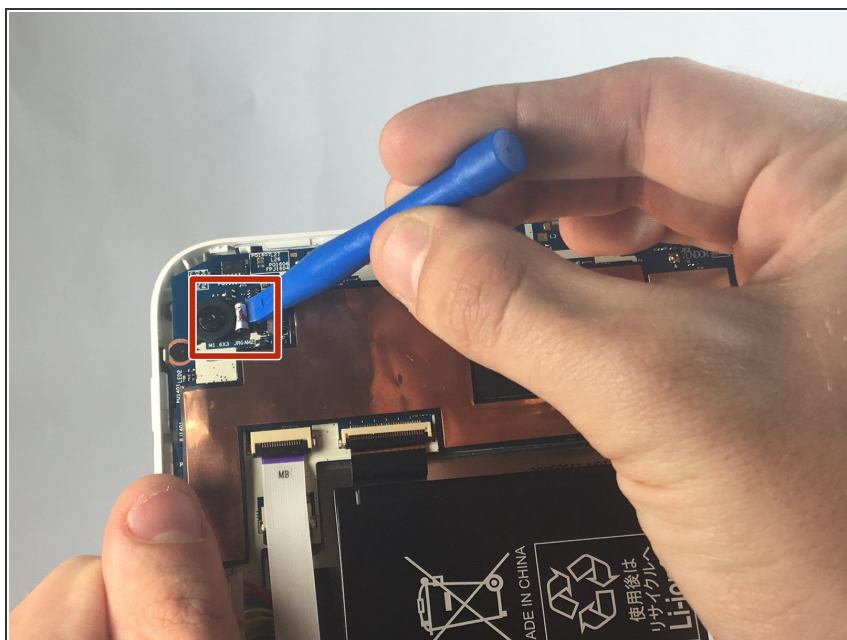


## Step 3 — Rear-Facing Camera



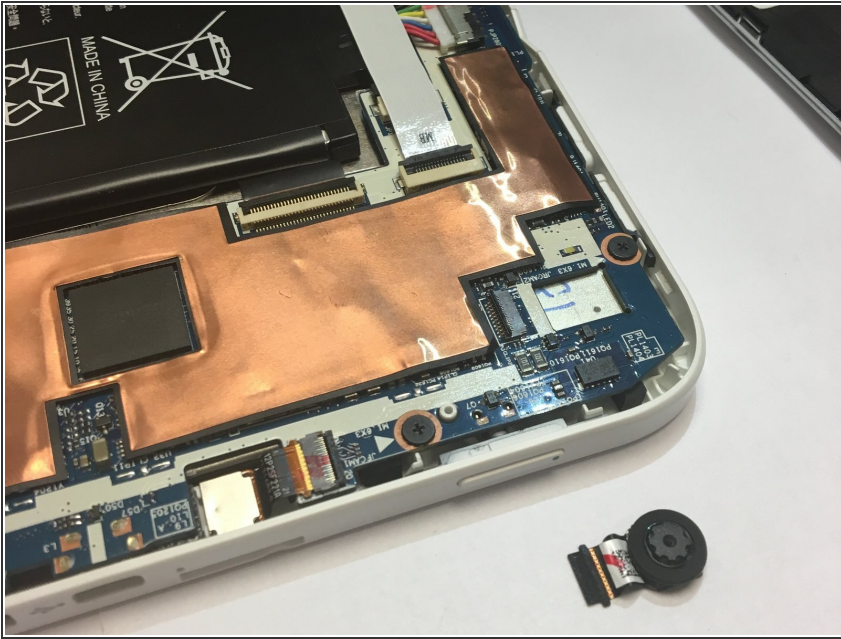
- Lift the retaining flap fastening the ribbon cord to the motherboard using a plastic opening tool.

## Step 4



- Remove the ribbon cord from its slot using a plastic opening tool.

## Step 5



- Remove the rear-facing camera from its slot and pose for a camera shot.

To reassemble your device, follow these instructions in reverse order.