



Garmin Nuvi 2455LMT Battery Replacement

This guide shows how to replace the battery in the Garmin Nuvi 2455LMT

Written By: Torrance Williams



INTRODUCTION

This battery is a simple part to replace and will only take about 2-3 minutes. This guide requires a metal spudger and the Torx 4 screwdriver.



TOOLS:

- [iFixit Opening Tools](#) (1)
- [Tweezers](#) (1)



PARTS:

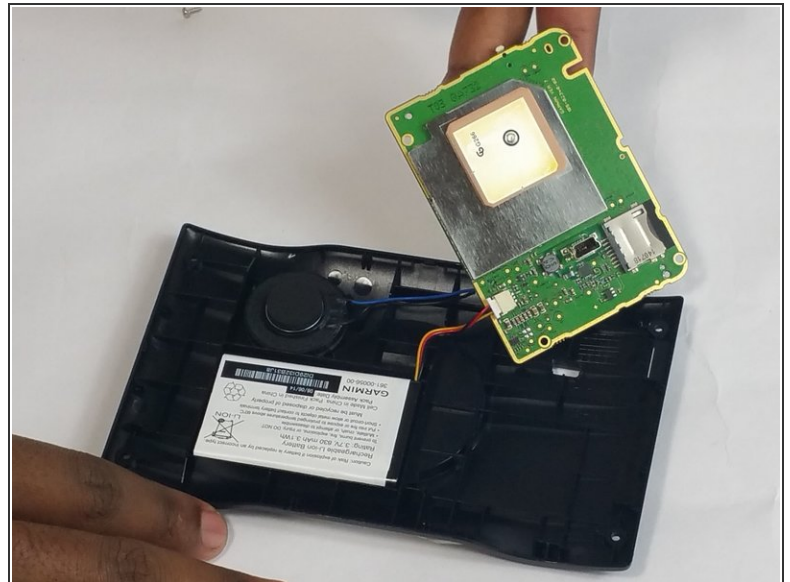
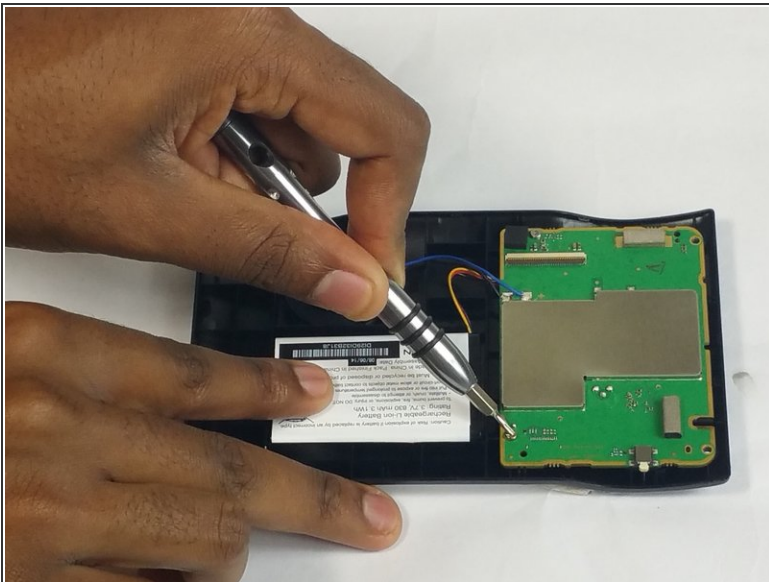
- [Garmin Nuvi 2405/2455/2475/2495/2555/2595/2789 Replacement Battery](#) (1)

Step 1 — Battery



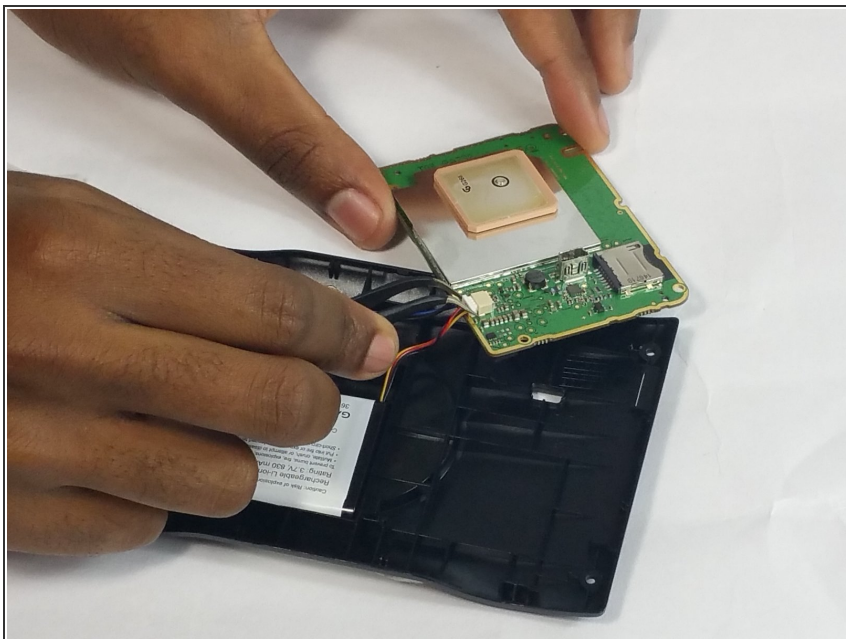
- Remove the orange band from the motherboard to access screws.

Step 2



- Unscrew the motherboard from the device
- Lift the motherboard to reveal the cords underneath.

Step 3



- Find the cord that connects the motherboard to the battery
- Disconnect this cord from the motherboard

Step 4



- Using the plastic opening tool, pry the battery from the base of the device.

To reassemble your device, follow these instructions in reverse order.