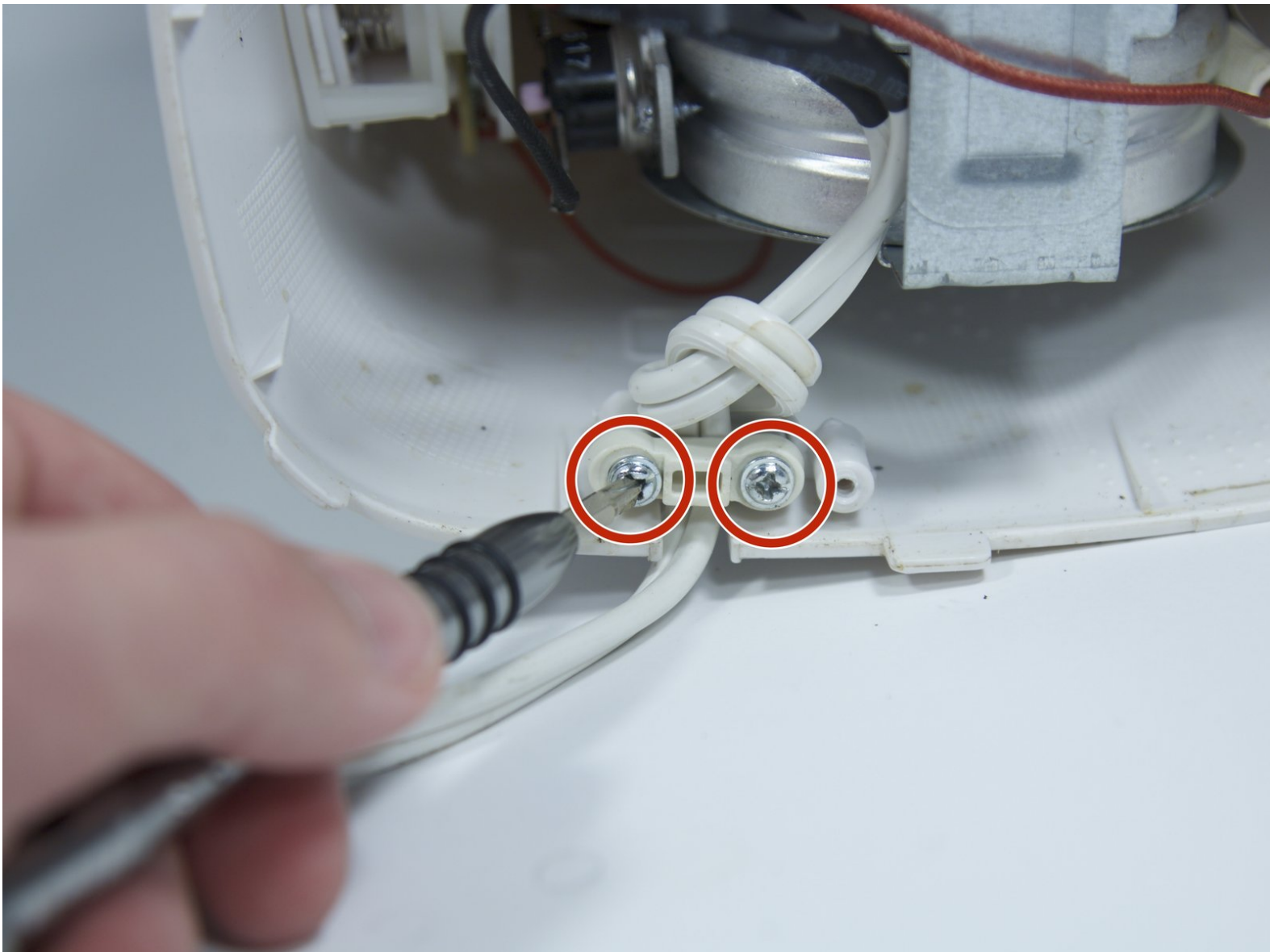




Rival CM4015 Power Cable Replacement

You will be replacing the power cord that powers the coffee maker.

Written By: Luis Villalpando



INTRODUCTION

Before beginning, double check that you have disconnected the power cable from the outlet. You will be taking out the base plate and replacing the power cable. You will need to cut the power cable and solder on the new one.

TOOLS:

- [Tri-point Y0 Screwdriver](#) (1)
 - [Phillips #0 Screwdriver](#) (1)
 - [Utility Scissors](#) (1)
-

Step 1 — Base Plate



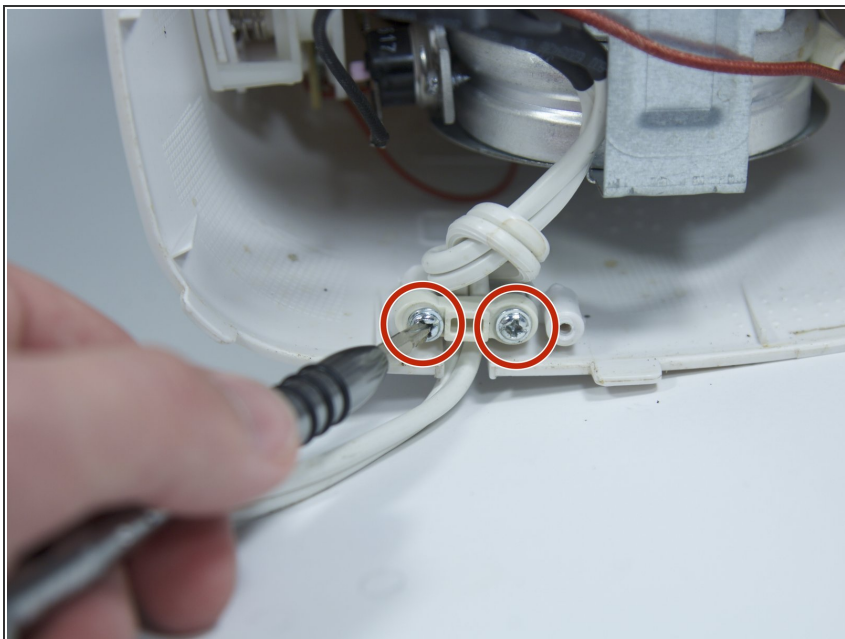
- Remove the three 16 mm tri-point screws from the base plate.

Step 2



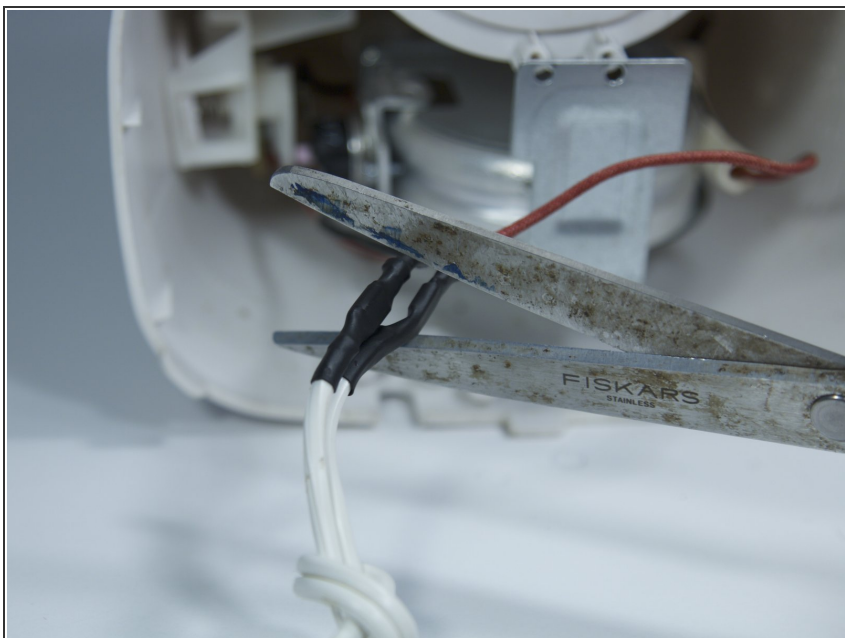
- Remove the base plate by pressing the plastic body away from the metal plate with your thumbs.

Step 3 — Power Cable



- Remove the two 8mm Phillips screws from the plastic body.

Step 4



- Pull the cord and cut the black and red wires across the black heat shrink.
- ⚠ Be careful when soldering the new power cable.

To reassemble your device, follow these instructions in reverse order.