



GoPro Hero5 Black Lens Assembly Replacement

In this guide, you will be removing the lens...

Written By: Christopher Adams



INTRODUCTION

In this guide, you will be removing the lens assembly from the rest of the GoPro. To get to the lens assembly, you must remove almost every other part first. The GoPro Hero5 Black is waterproofed with plenty of adhesives. By completing this guide, you will have to remove the adhesive and your GoPro will no longer be waterproof.

TOOLS:

[iOpener](#) (1)
[T3 Torx Screwdriver](#) (1)
[iFixit Opening Tool](#) (1)
[Spudger](#) (1)
[Phillips #000 Screwdriver](#) (1)

PARTS:

[GoPro Hero5 Black Lens & Image Sensor](#) (1)
[GoPro Hero5 Black Lens Cover](#) (1)

Step 1 — Battery



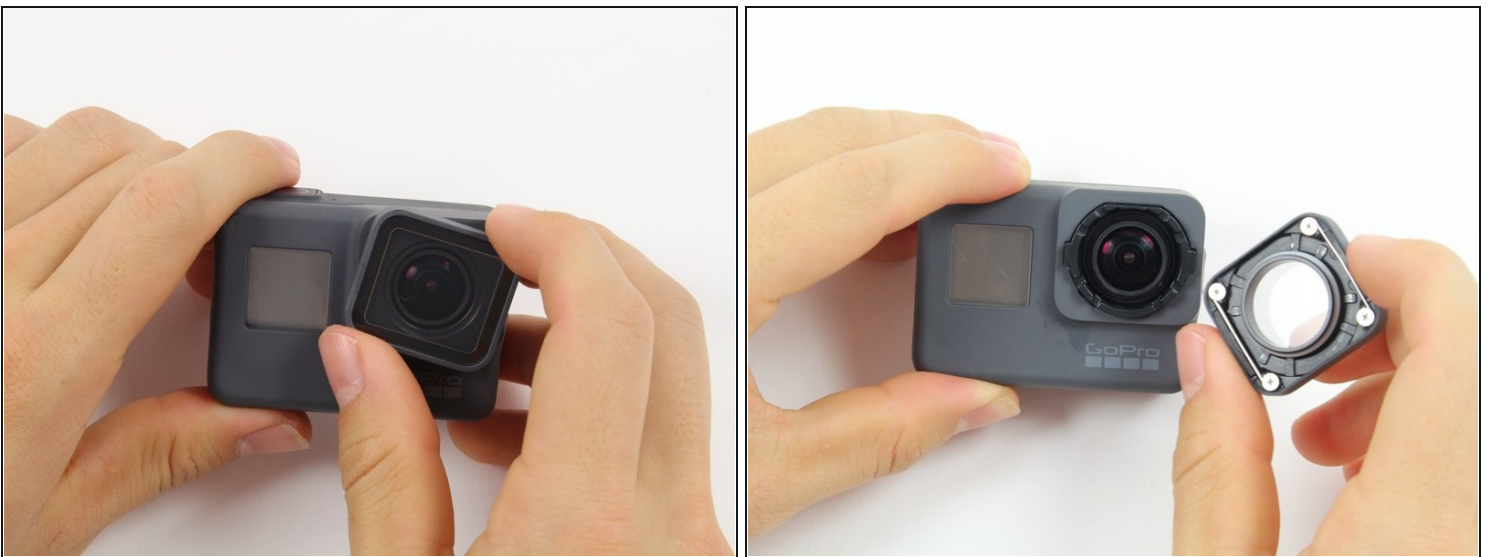
- While pressing the button on the bottom of the GoPro, slide the battery door to the side to pop it open.

Step 2



- Grab the plastic flap on the battery and pull the battery out.

Step 3 — Back Housing



- Pull and twist the lens cover right or left until it pops off.
 - ① The lens cover is secured tightly and might be difficult to twist off.

Step 4



- ① This step is not necessary but will make the process of removing the faceplate much easier.
- Refer to the [iOpener instructions](#) for how to heat up and use the iOpener.
- Apply the heated iOpener to the front of the GoPro for a few minutes to melt the adhesive under the faceplate.

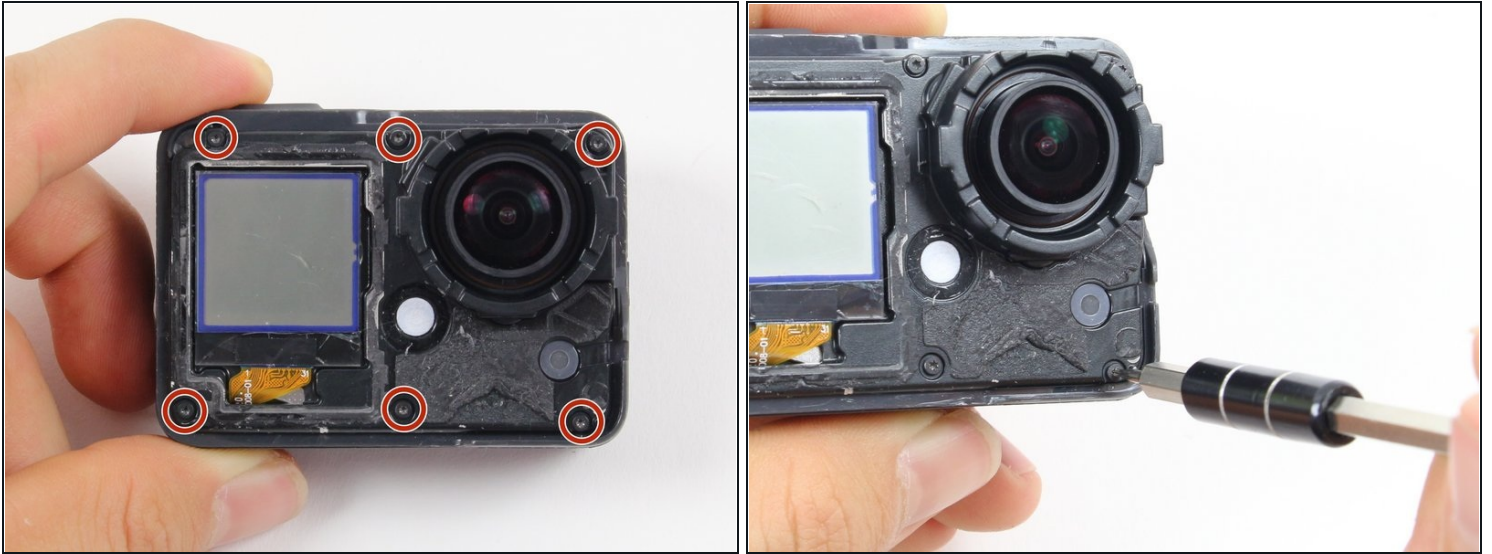
⚠ The heated iOpener is very hot and can burn your hands. Avoid burns by using towels or gloves to hold the iOpener.

Step 5



- Starting with the edges, use the spudger to pry off the faceplate.
- ① The faceplate is held down with adhesive and may take a while to get off.

Step 6



- Remove the six T3 Torx screws.

Step 7



⚠ Be careful when pulling open the motherboard assembly as it is still connected to the back housing by four cables. The cables may break if stretched.

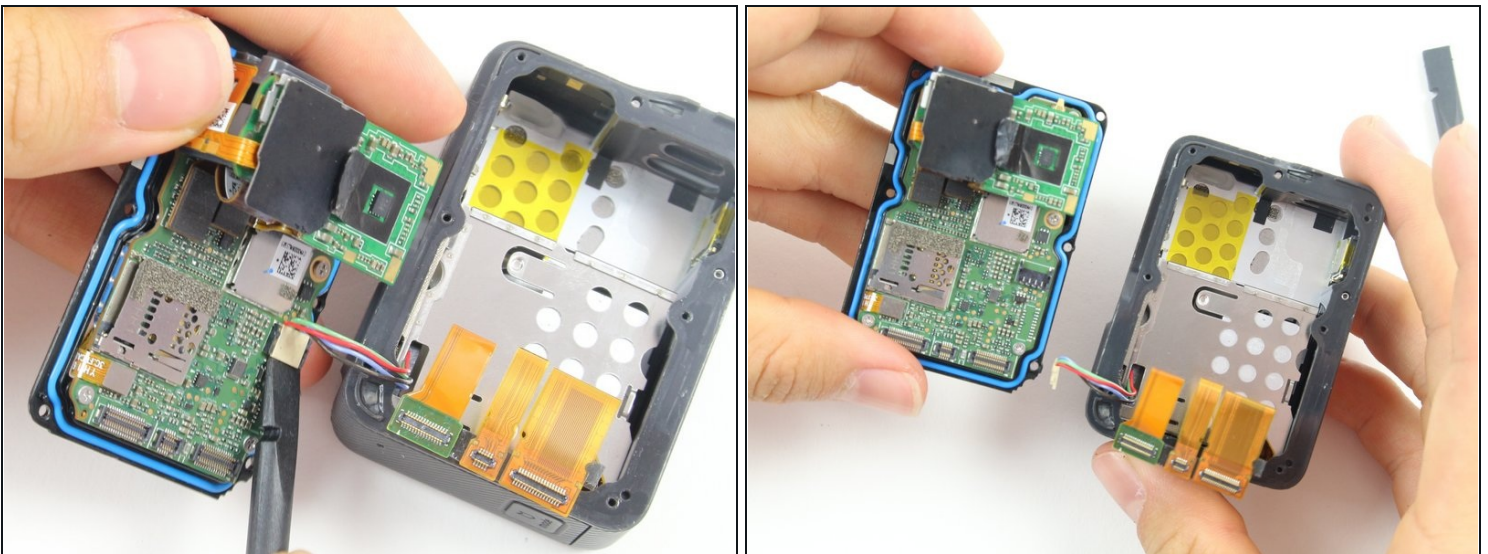
- Using the spudger, slowly pry open the motherboard assembly from the LCD side of the GoPro.

Step 8



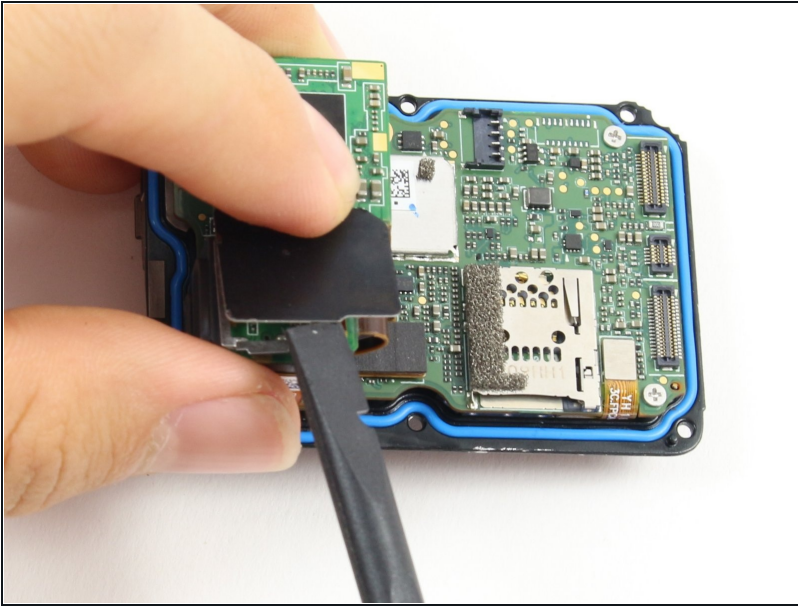
- Use the flat end of a spudger to pry the three ribbon cables connected to the side of the motherboard.

Step 9



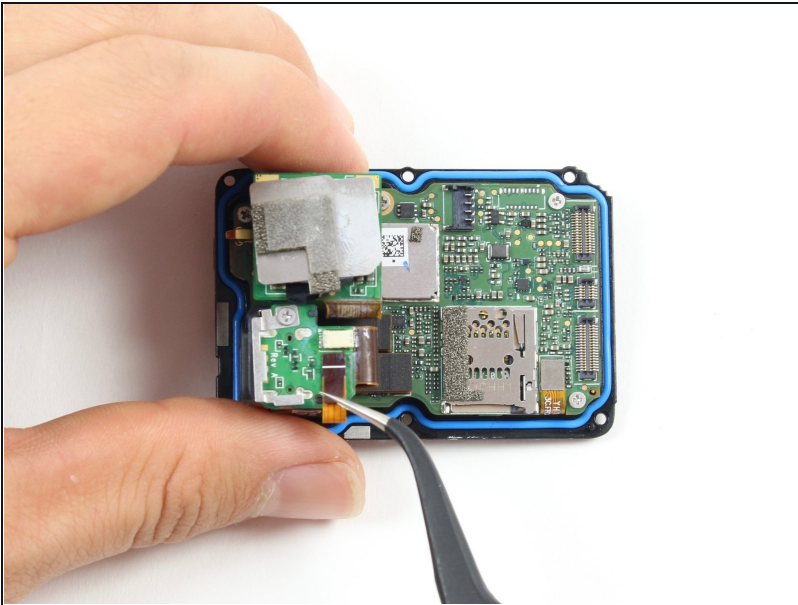
- Use the flat end of the spudger to pry the battery housing power cable straight up from its socket on the motherboard.

Step 10 — Motherboard



- Use the flat end of the spudger to pry the black cover plate straight up from its socket on the motherboard.

Step 11



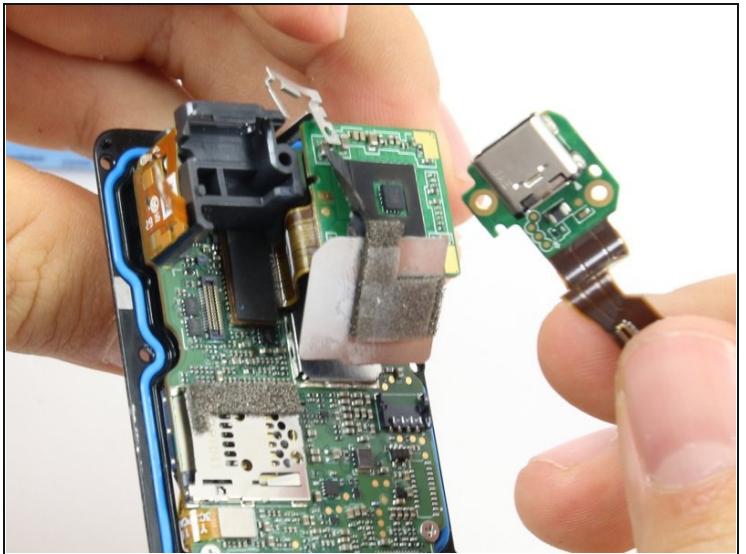
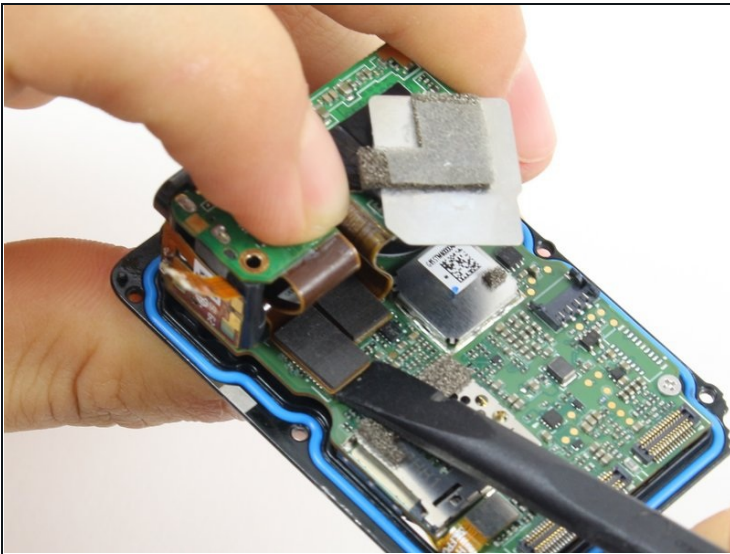
- Use the [tweezers](#) to pull the ribbon cable connector out of its white socket on the charging assembly board.

Step 12



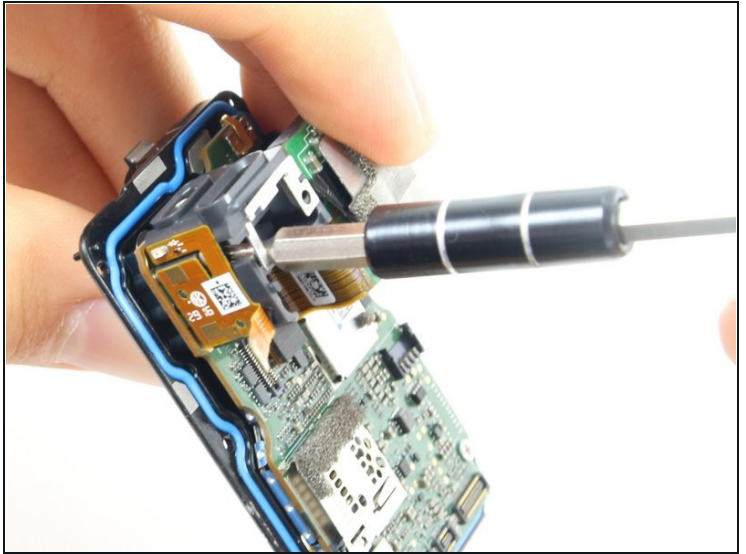
- Remove the two #000 Phillips screw.

Step 13



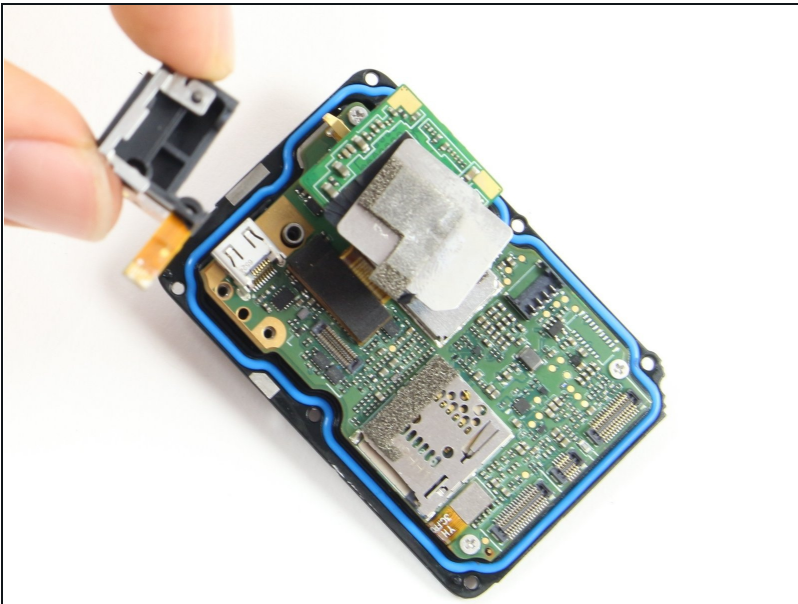
- Use the flat end of the spudger to pry the charging port ribbon cable connector straight up from its socket on the motherboard.
 - ① Once the ribbon cable is disconnected from the motherboard. The charging port assembly should come right off.

Step 14



- Remove the 10mm #000 Phillips screw.

Step 15



- Remove the charging assembly housing by pulling it straight up off the motherboard.

Step 16



- Remove the two 6mm #000 Phillips screws.
- Remove the two 2mm #000 Phillips screws.

Step 17



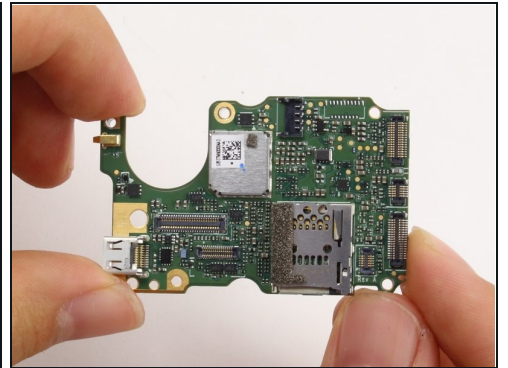
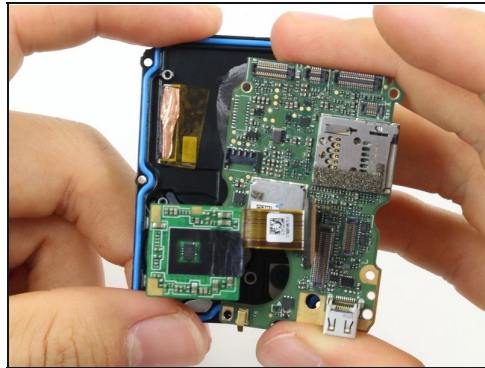
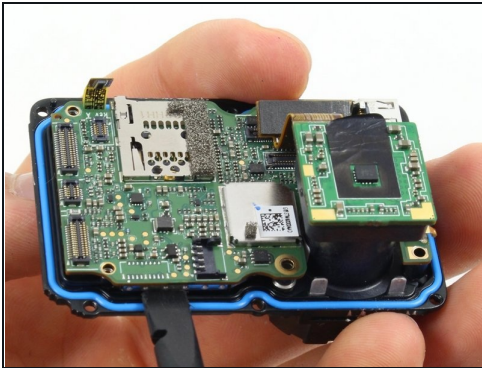
- Use the flat end of the spudger to pry the lens assembly ribbon cable connector straight up from its socket on the motherboard.

Step 18



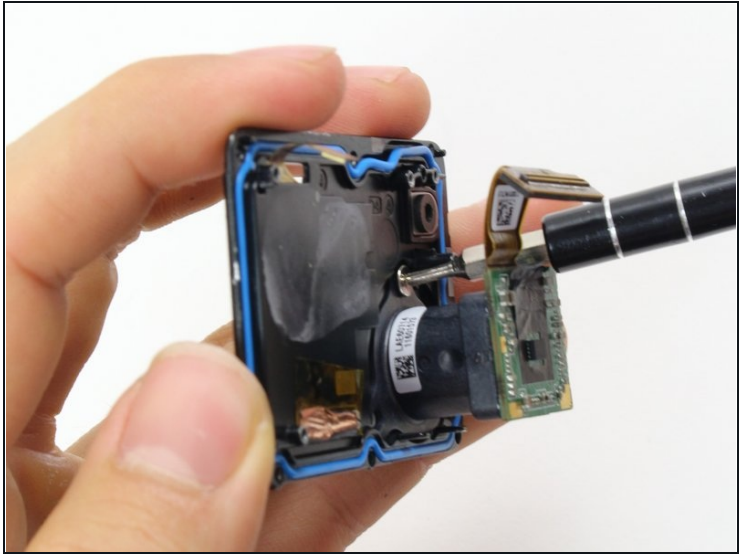
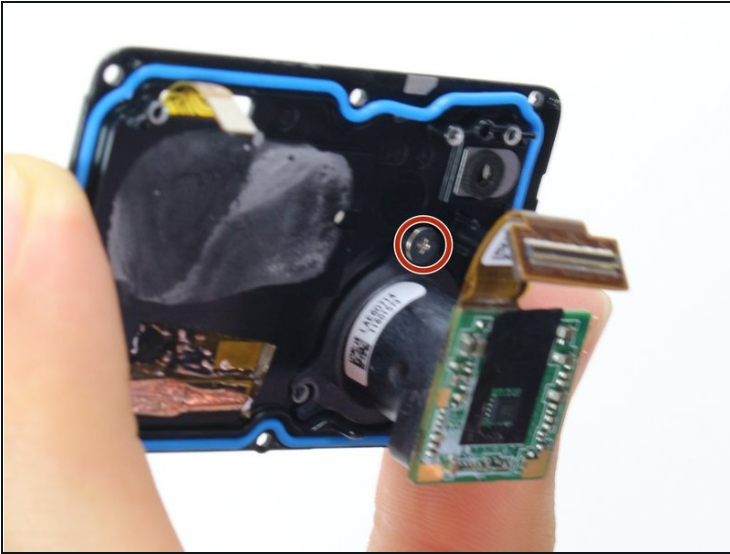
- Use the flat end of the spudger to pry the LCD screen ribbon cable connector straight up from its socket on the motherboard.

Step 19



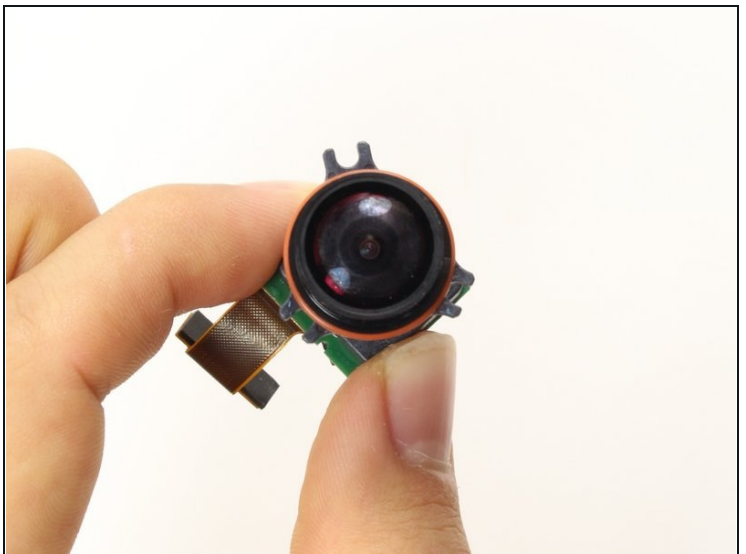
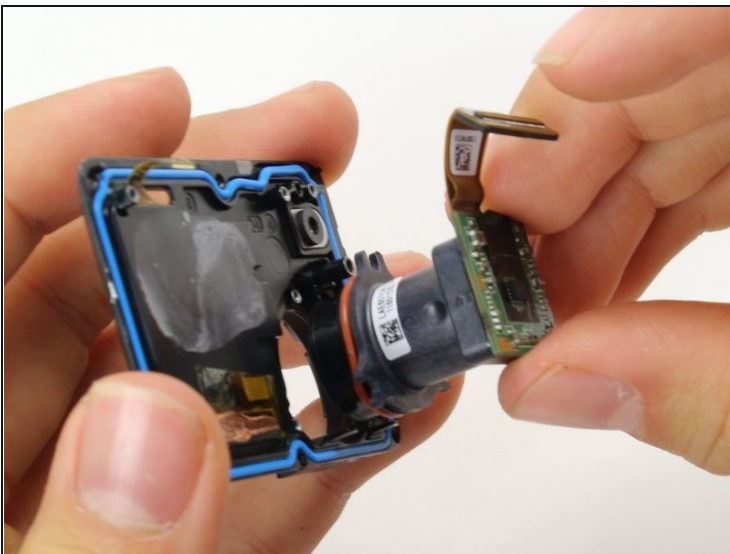
- Use the flat end of the spudger to pry the motherboard off the midframe.
- ⓘ The motherboard is held onto the midframe with light adhesive and should come right off with a little force.

Step 20 — Lens Assembly



- Remove the 2mm #000 Phillips screws using a #000 Phillips head screwdriver or tool bit.

Step 21



- Pull the lens assembly straight out from the Midframe.

To reassemble your device, follow these instructions in reverse order.