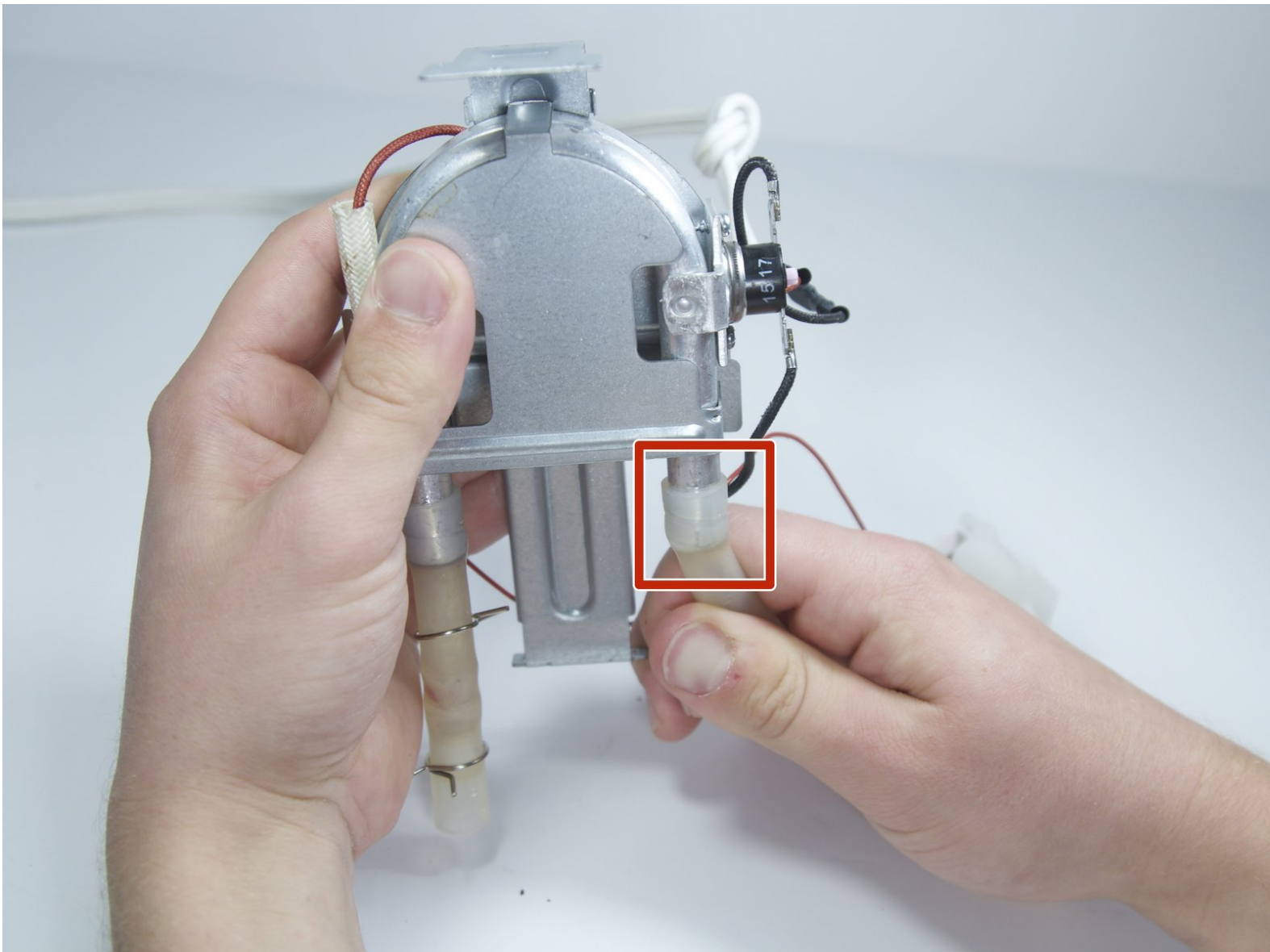




Rival CM4015 Water Tubes Replacement

Replace the water tubes if there is leaking water coming from the coffee maker.

Written By: Michael Murdock



INTRODUCTION

The Rival single cup coffee maker has water tubes that are prone to leaking. If boiling water runs through the tubes for too long, they can come loose and leak water. The tubes are held in by a simple spring that can be loosened by hand.



TOOLS:

- [Tri-point Y0 Screwdriver](#) (1)
 - [Phillips #0 Screwdriver](#) (1)
 - [Flathead 3/32" or 2.5 mm Screwdriver](#) (1)
-

Step 1 — Base Plate



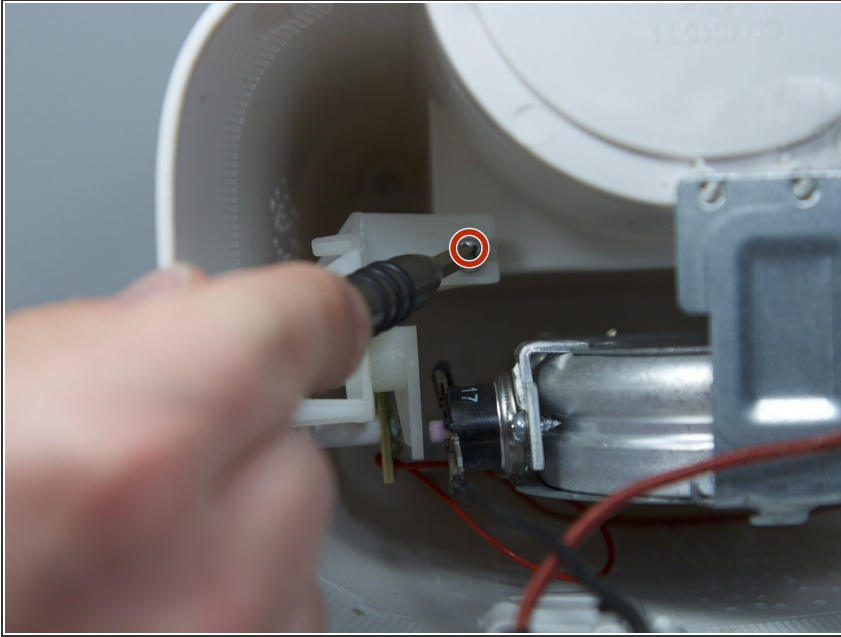
- Remove the three 16 mm tri-point screws from the base plate.

Step 2



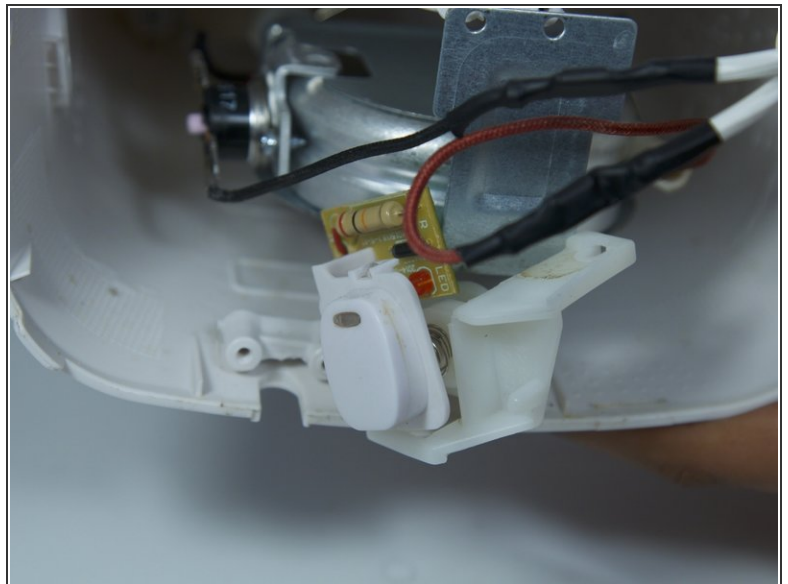
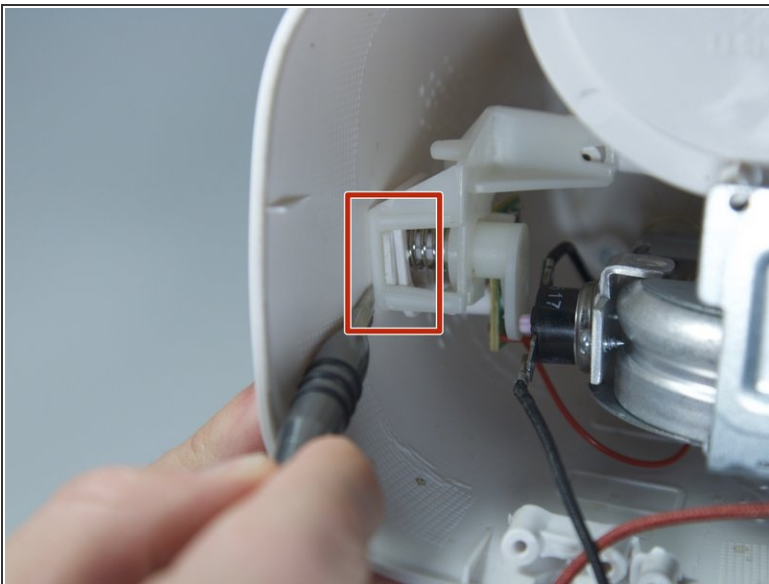
- Remove the base plate by pressing the plastic body away from the metal plate with your thumbs.

Step 3 — Power Button



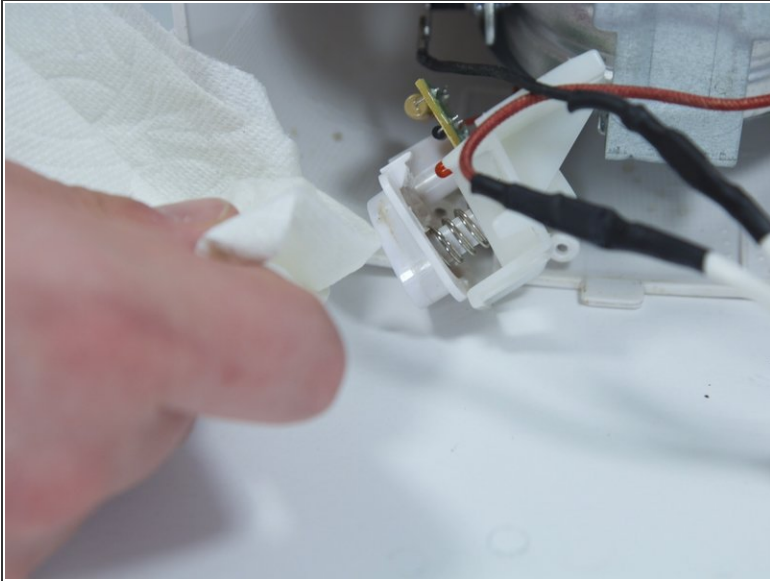
- Remove the 8mm Phillips screw that attaches the power button to the inside of the coffee maker.

Step 4



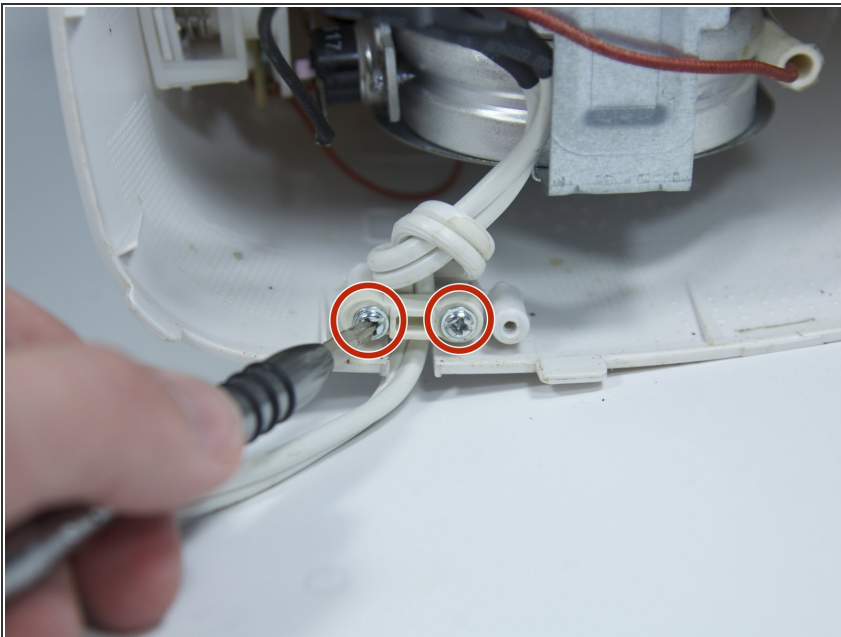
- Use a flat head screwdriver to pry the power button from its slot in the body of the device.
- ⓘ Make sure the tool is pressed securely under the plastic clip, in order to not break it.

Step 5



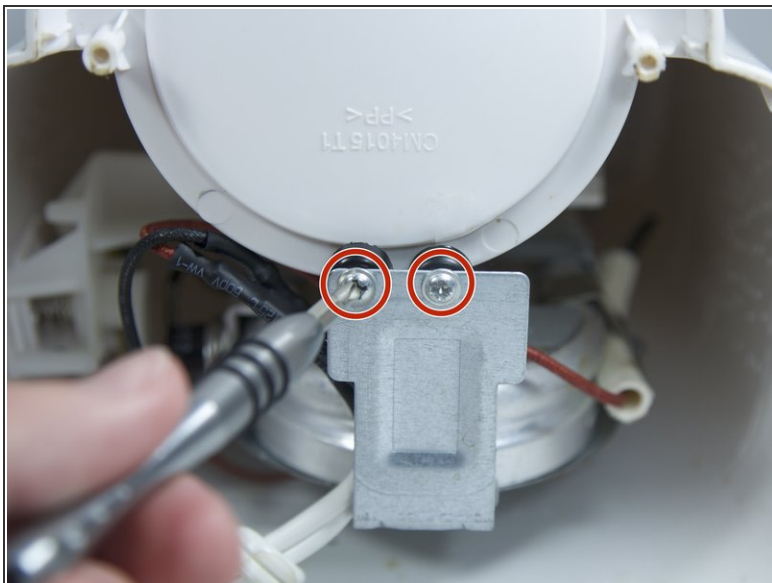
- Clean both the button and its slot before replacing the power button.

Step 6 — Heating Element



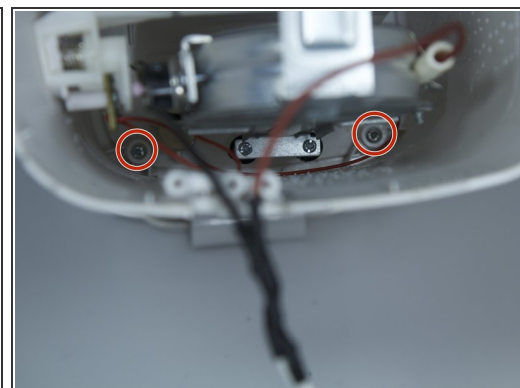
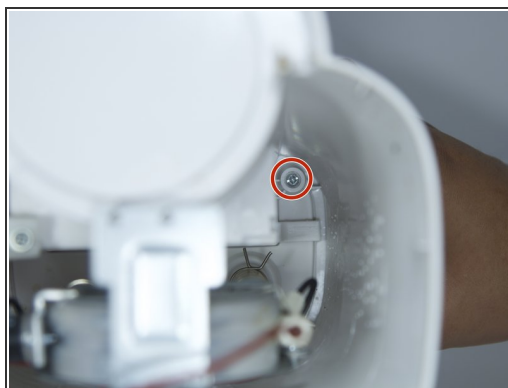
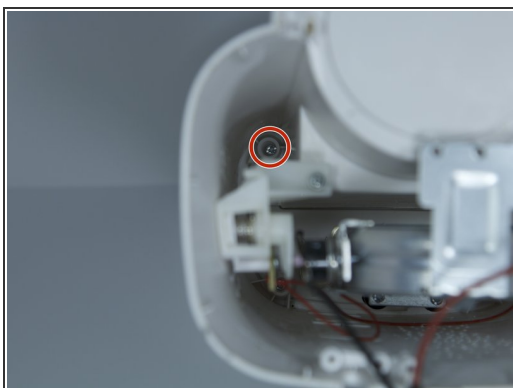
- Remove the two 8 mm Phillips screws from the plastic body.

Step 7



- Remove the two 8 mm Phillips screws from the chassis of coffee maker.
- Pull back the metal backing from the plastic body.

Step 8



- Remove the four 8 mm Phillips screws from the inner plastic body.
- ⓘ You will need a long, thin Phillips screw driver to get this deep into the device.

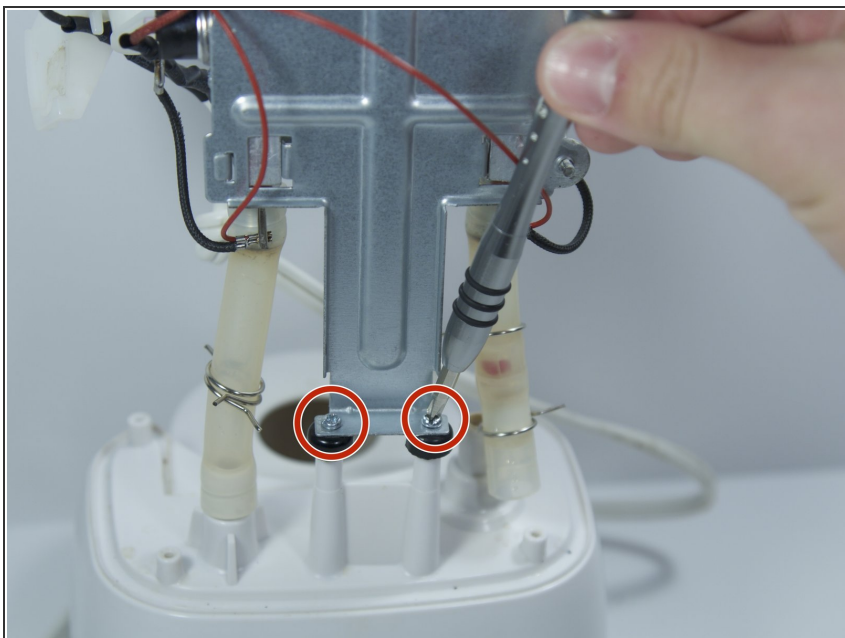
Step 9



- Flip the device upside down and remove the outer plastic body from the device by pulling straight up.

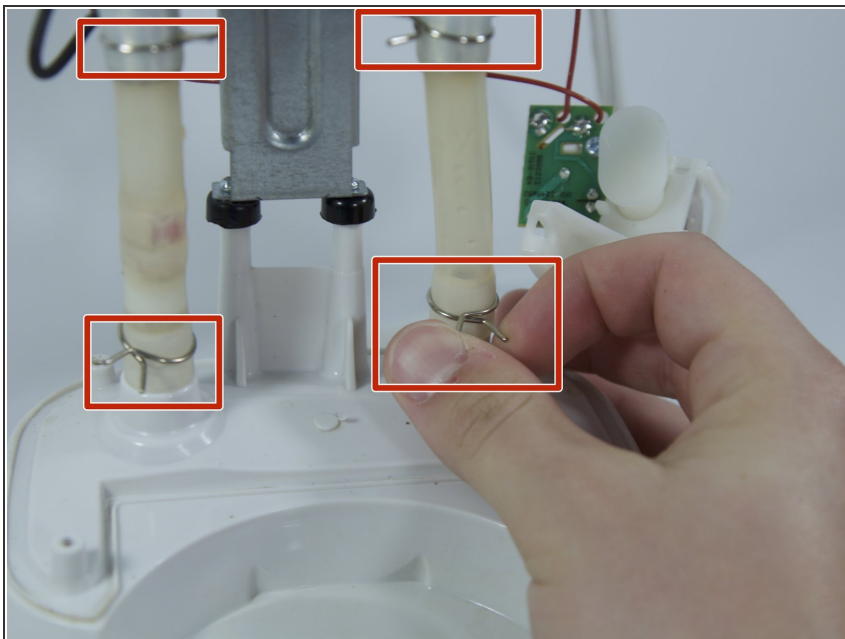
⚠ Take your time to make sure the thin cables within the device don't tear.

Step 10



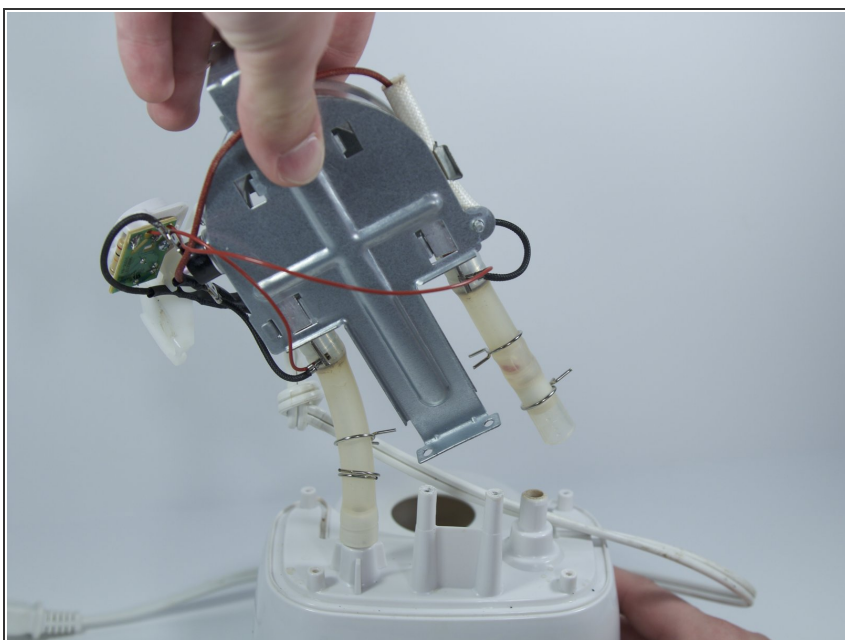
- Remove the two 8 mm Phillips screws from the metal backing.

Step 11



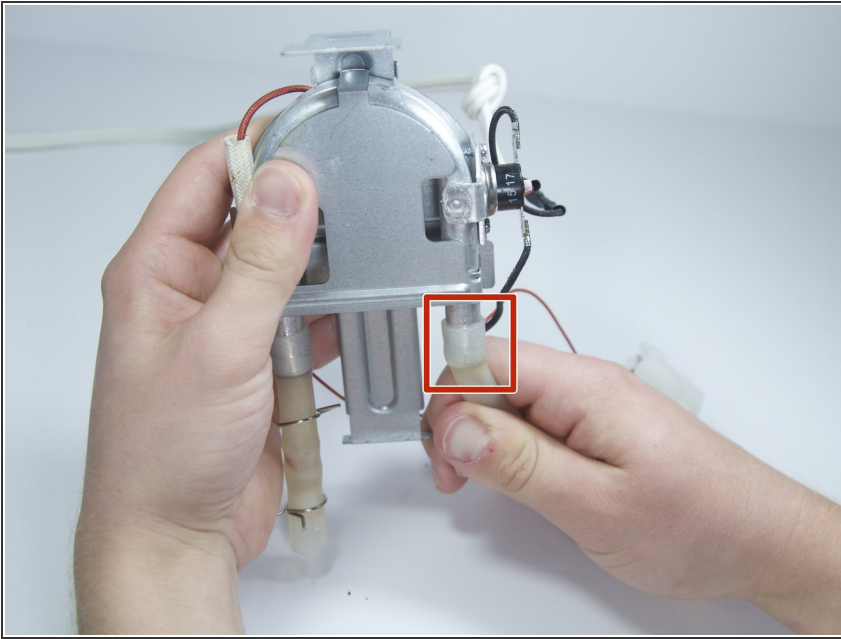
- Remove the 4 springs holding the water tubes by squeezing the 2 prongs together.
- ⓘ You may also use pliers for this step if the springs are too strong.

Step 12



- Bend the heating element back and forth to wiggle the water tubes loose from the plastic.

Step 13 — Water Tubes



- Remove the two rubber water tubes from the heating element by firmly pulling each at a 90 degree angle from the socket.

To reassemble your device, follow these instructions in reverse order.