



# Eclipse MTE28VGM Speaker Replacement

This guide will show you how to replace a faulty speaker in the Eclipse MTE28VGM.

Written By: Brendon Yates



---

## INTRODUCTION

This guide is required when there is no audio coming from the device as a result of a broken speaker. To replace the speaker, it is required to solder the replacement speaker to the motherboard. This is a safety hazard and specific soldering equipment is needed. When soldering, protective equipment needs to be worn for caution.



### TOOLS:

- [Soldering Iron](#) (1)
  - [Tweezers](#) (1)
  - [JIS Driver Set](#) (1)
-

## Step 1 — Speaker Replacement



- Using the screwdriver with the J00 bit, remove the two 4.8 mm Phillips screws

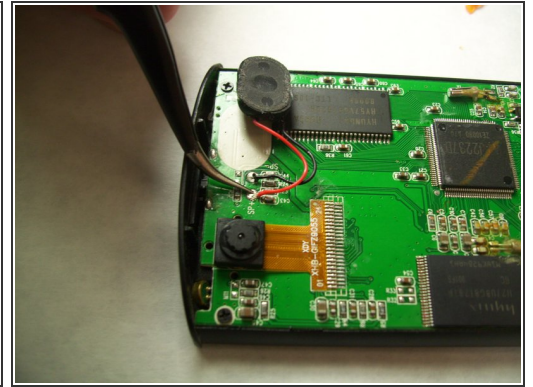
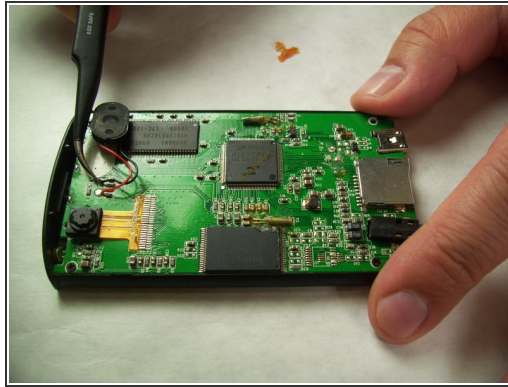
⚠ Use caution when removing the screws as they can strip easily.

## Step 2



- Using the small metal pry bar, remove the bottom plastic cover.
- Using your thumb, press down on the home button and hold the metal casing. With your other hand hold the top plastic part of the device. At the same time slide the metal casing and the plastic casing apart.
- ⓘ On occasion the battery can become swollen and make this process difficult. You might need to use the spudger to push on the bottom components to assist in the separation.

## Step 3



- Use the [soldering guide](#) to desolder the speaker contacts.

To reassemble your device, follow these instructions in reverse order.