



Asus VivoTab Smart Battery Replacement

This guide will show you how to remove the back panel and replace the battery for the Asus VivoTab Smart tablet.

Written By: Zach Hatten



INTRODUCTION

This guide will show you how to remove the back panel and remove/replace the battery for the Asus VivoTab Smart tablet.

Once you are done, calibrate your newly installed battery by draining it below 10% and then charging it uninterrupted to 100%.



TOOLS:

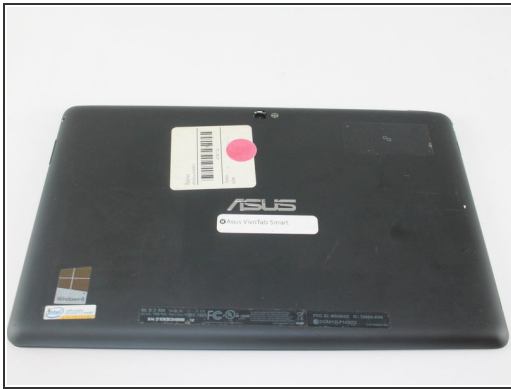
- [iFixit Opening Tool](#) (1)
- [Precision Tweezers Set](#) (1)
- [Phillips #00 Screwdriver](#) (1)



PARTS:

- [Asus VivoTab Smart Battery](#) (1)

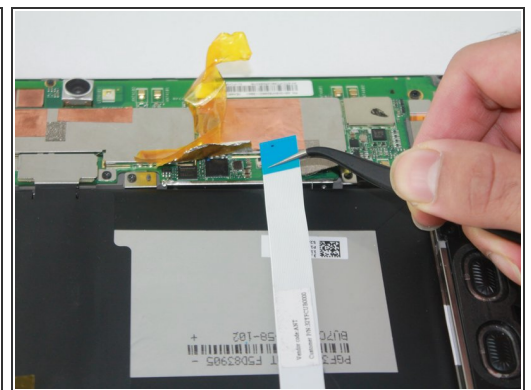
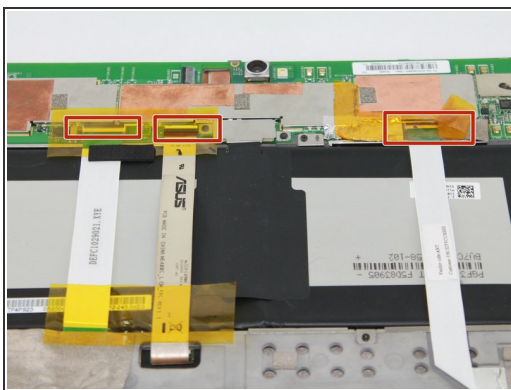
Step 1 — Battery



⚠ Power off the device before you begin disassembly.

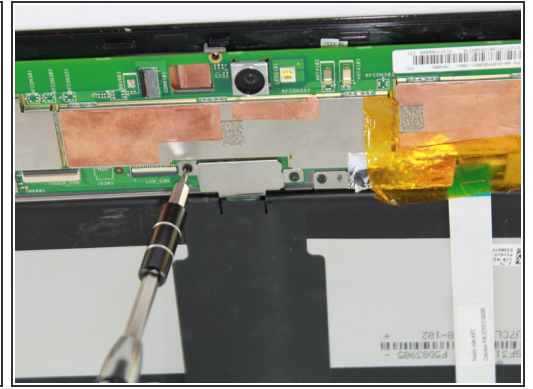
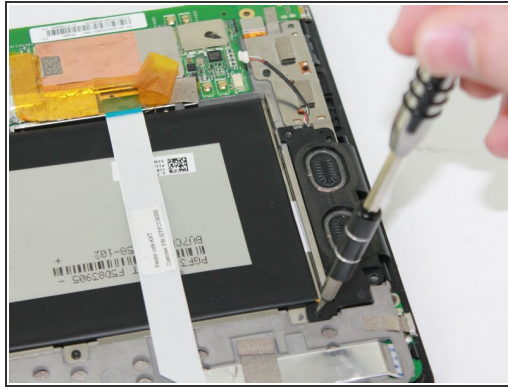
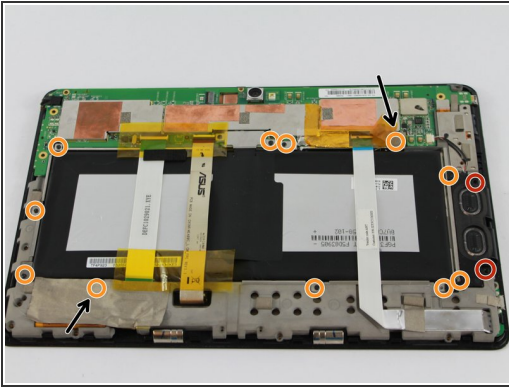
- Place the device face down on a flat surface.
- Remove the back panel with the plastic opening tool by sliding the tool around the edge of the panel.


Step 2



- Remove the tape covering the 3 ribbons by peeling it off with your hands or with the tweezers.
- Carefully detach the ribbons from the device's motherboard by pulling outward using tweezers.

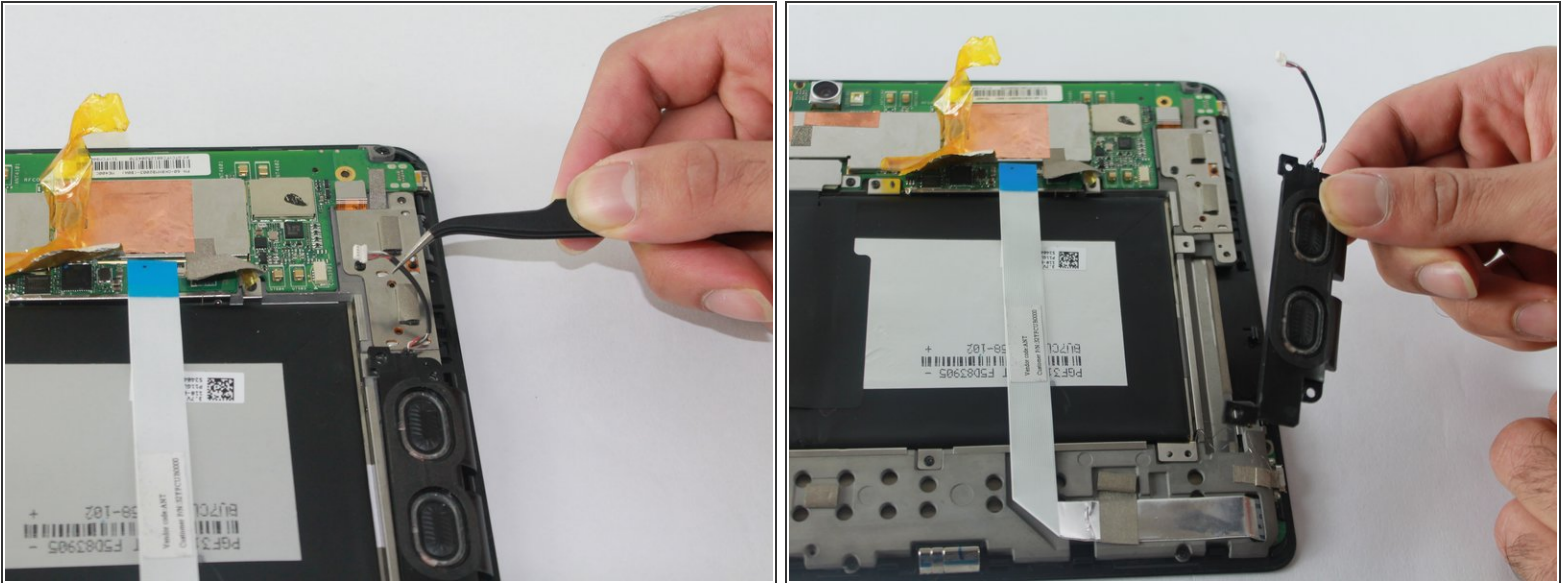
Step 3



 The Philips #00 Screwdriver listed in the recommended tools will fit all the screws.

- Remove the tape covering the areas marked by the black arrows
- Remove two 3.7 mm Phillips #00 screws
- Remove eleven 2.7 mm Phillips #00 screws

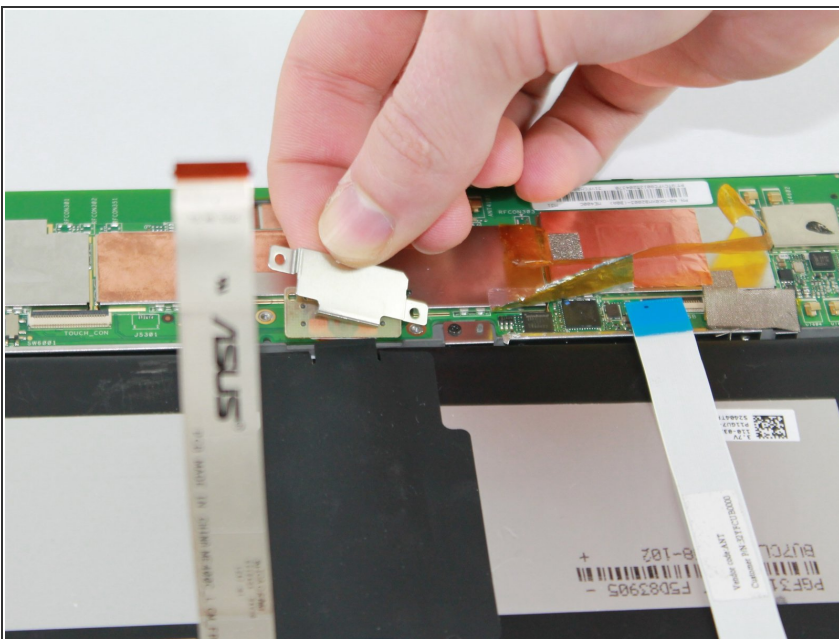
Step 4



⚠ Be careful not to damage the speaker wire.

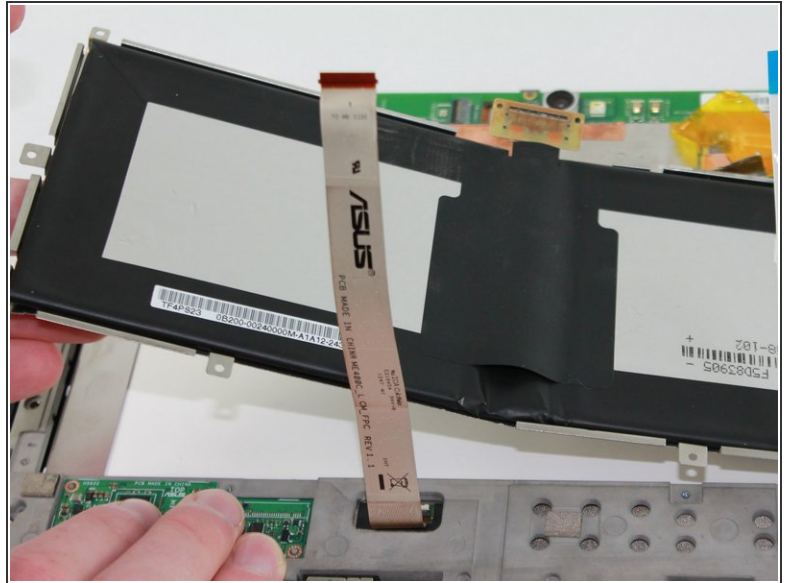
- Gently unplug the speaker from the motherboard by grabbing the wire near the plastic white plug with tweezers and gently pulling.
- Lift up on the speaker with your fingers to remove it.

Step 5



- Gently lift the battery pressure plate off of the motherboard.

Step 6



- Use tweezers to separate the battery tray from the device
- Lift the battery tray from the device using your hands.

Step 7



⚠ The battery is secured to the tray by a strong adhesive. Take care not to bend the tray when removing the battery.

- Detach the battery from the tray by pulling the battery up from the tray with your hands.

-
- ⓘ If it is very difficult to lift the battery from the tray, you can use a blow dryer to heat the back side of the tray. This will weaken the adhesive and make it easier to remove.
-

To reassemble your device, follow these instructions in reverse order.