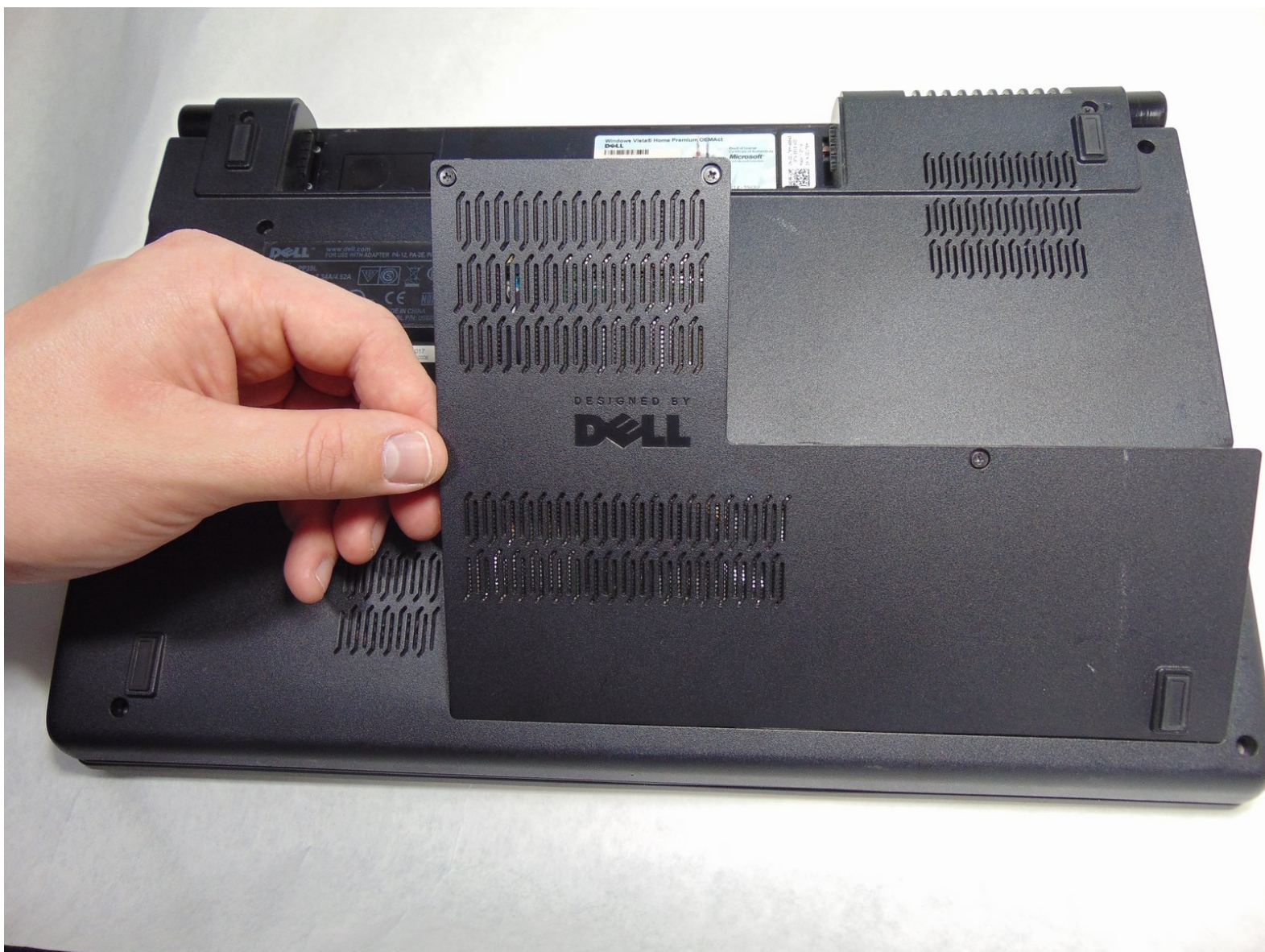




Dell Studio 1555 Back Panel Removal

Back panel removal guide for the Dell Studio 1555. Prerequisite Only

Written By: Josh Boone



INTRODUCTION

To be able to access certain components like the hard drive or motherboard of the Dell Studio 1555, the back panel will need to be removed. A Phillips 1 screwdriver is required for this guide.



TOOLS:

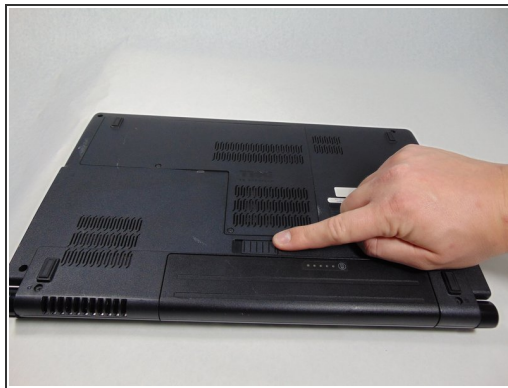
- [Phillips #1 Screwdriver](#) (1)
-

Step 1 — Battery



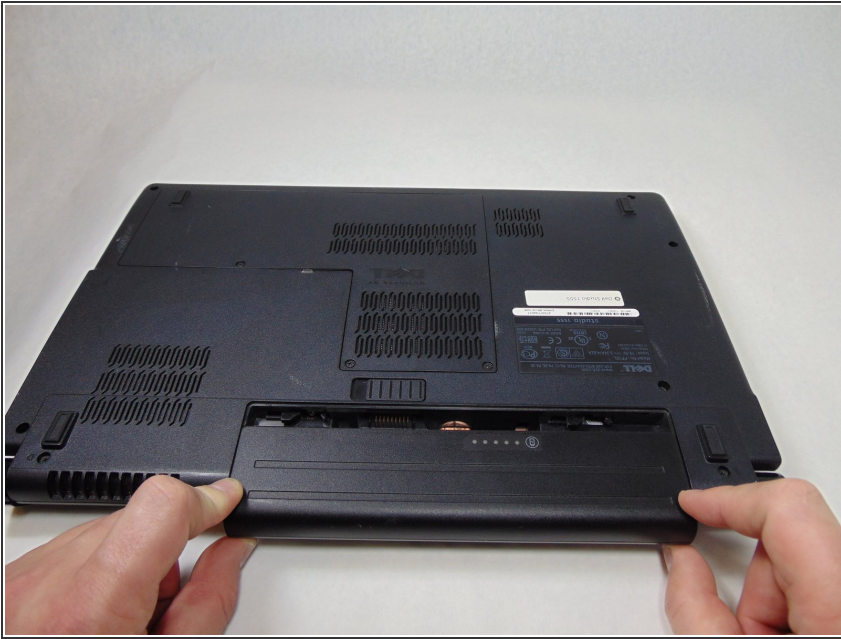
- Turn off and unplug the laptop.
 - ⚠ Failure to properly turn off device before handling the battery could result in electrical shock.
- Flip the laptop so the underside is facing up with the battery closest to you.

Step 2



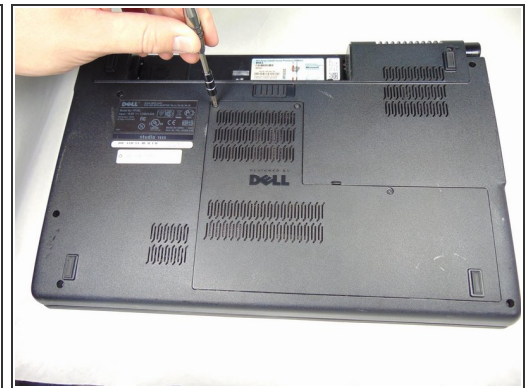
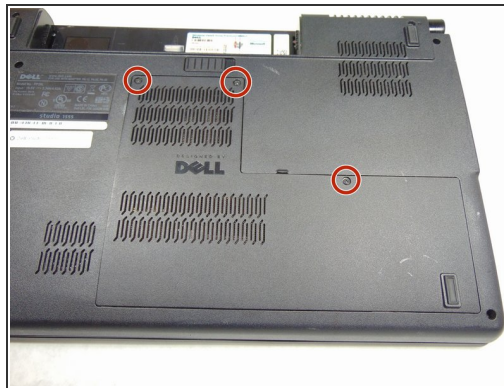
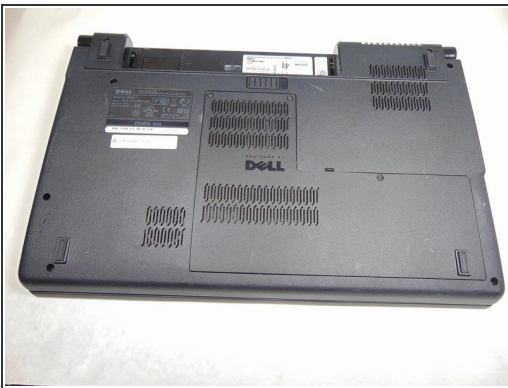
- Slide the locking switch to the left to release the battery.

Step 3



- Gently pull the battery away from the device.

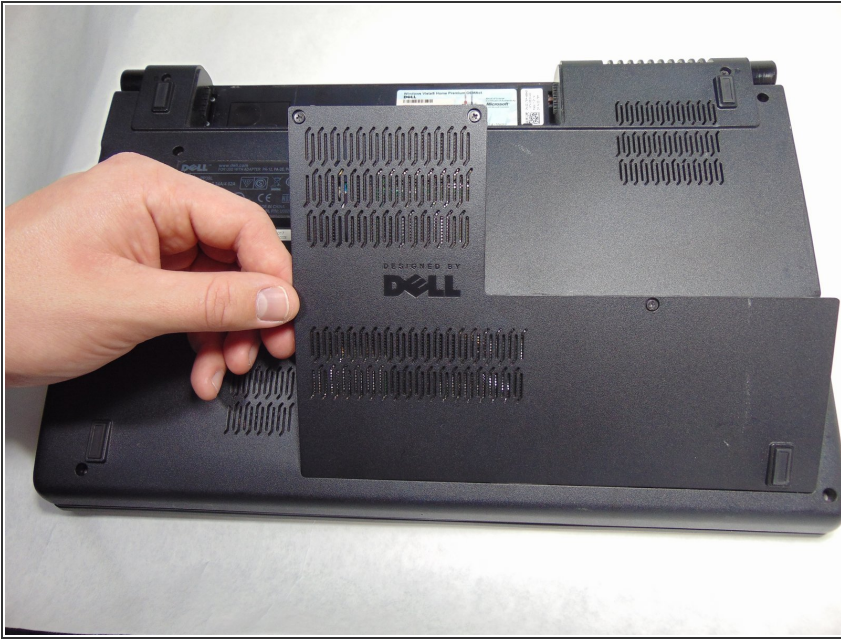
Step 4 — Back Panel




- Loosen the three 5mm screws from the back panel using the # 1 Philips screwdriver.

i The three 5mm screws will stay in place on the back panel.

Step 5



- Carefully remove the separated back panel.

 If the back panel is difficult to remove and feels like it is going to break, DO NOT force it. Check to confirm that all the screws are unscrewed all the way before attempting again.

To reassemble your device, follow these instructions in reverse order.