



# PlayStation 2 controller Teardown

Its for my stem class and teardown and reassemble a playstation 2 controller

Written By: Georgie Patton



---

# INTRODUCTION

Its for my stem class and teardown and reassemble a playstation 2 controller

---



## TOOLS:

- [Phillips #00 Screwdriver](#) (1)
-

## Step 1 — PlayStation 2 controller Teardown



- I had to remove all the screws on the back to get the controller open to see the inside or tear it down

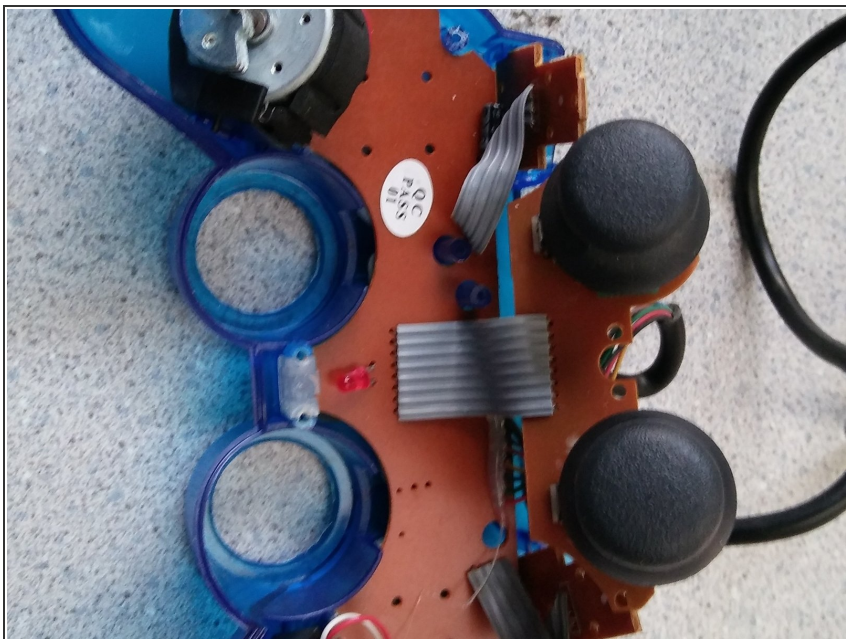
## Step 2



- so after i removed the back of the PS2 controller, this was the back inside of the controller and i had to remove one screw on the mother board



## Step 3



- The last step was on the other side of the controllers backside, also the inside and this is where we removed the two sticks and had to put all the screws and pieces back together.