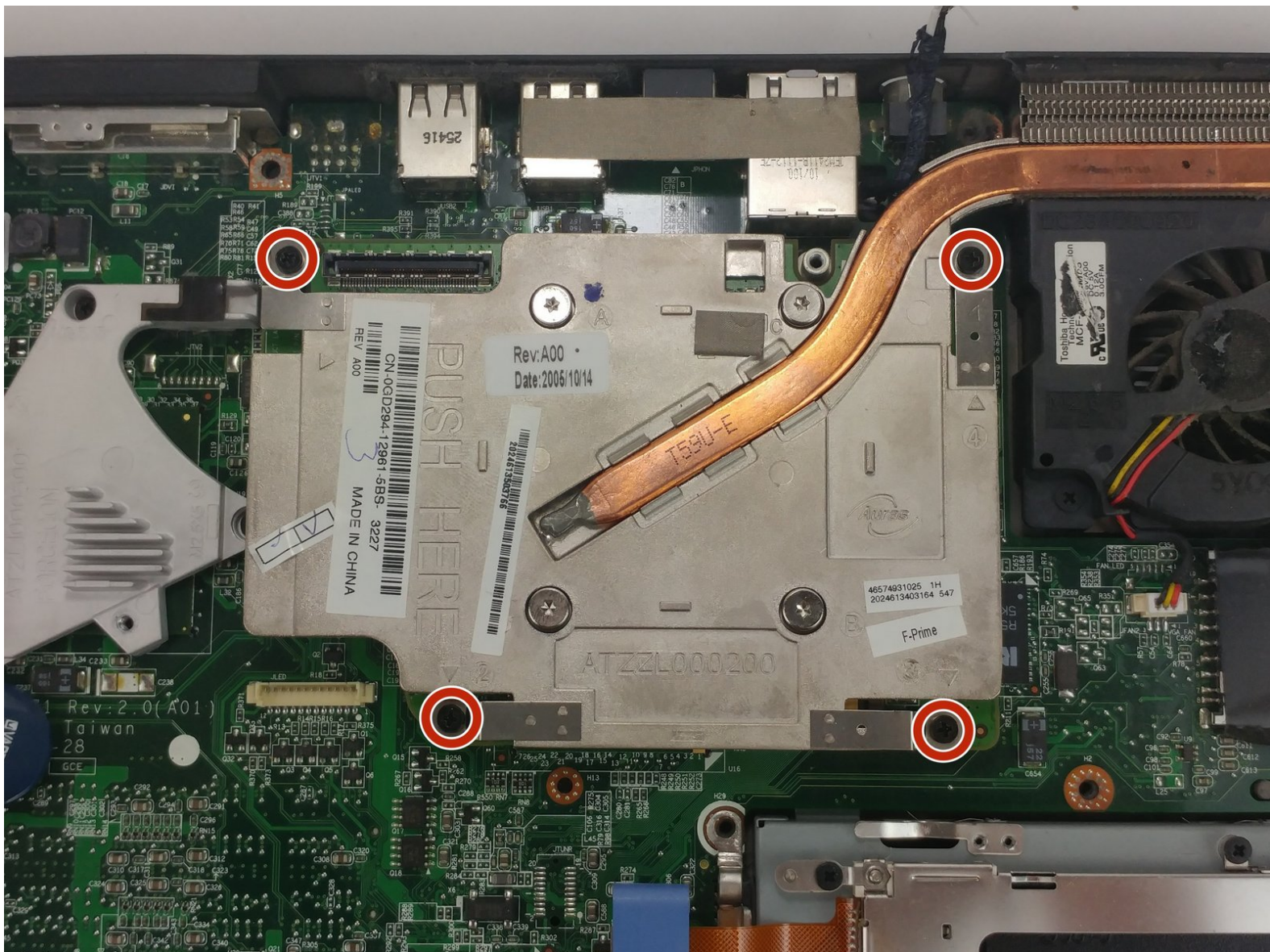




Dell Inspiron 9300 Video Card Replacement

Guide to replace or upgrade the video card in your Dell Inspiron 9300

Written By: Steven Faulkner



INTRODUCTION

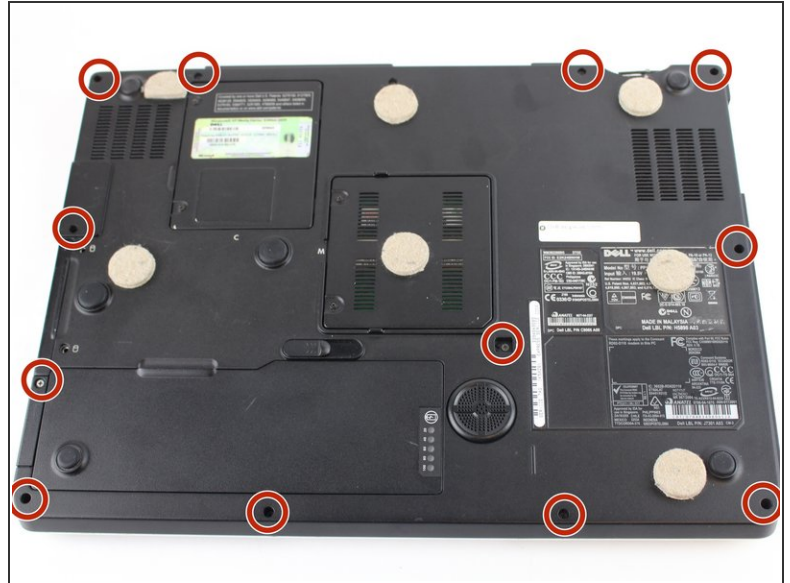
Guide to replace or upgrade the video card in your Dell Inspiron 9300



TOOLS:

- [Heavy-Duty Spudger](#) (1)
 - [iFixit Opening Tools](#) (1)
 - [Phillips #0 Screwdriver](#) (1)
-

Step 1 — Prerequisite Only



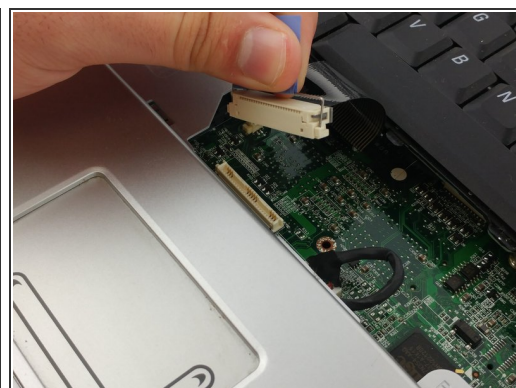
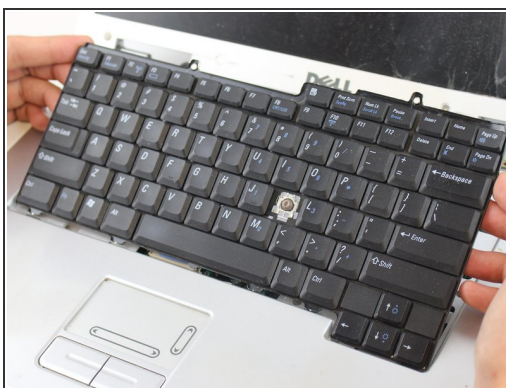
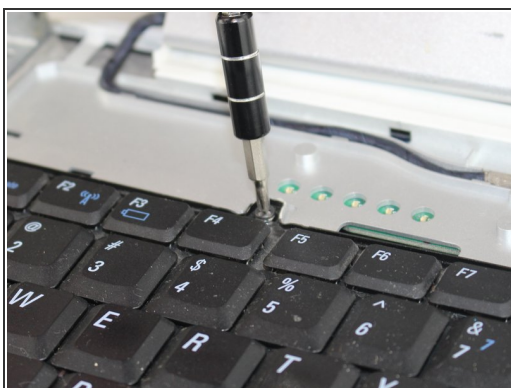
- Remove the battery prior to working on any internal components.
 - Remove the twelve 6mm Phillips screws from the bottom of the case.
- ⚠ Remove the battery before working on internal components to ensure a safe working environment.

Step 2



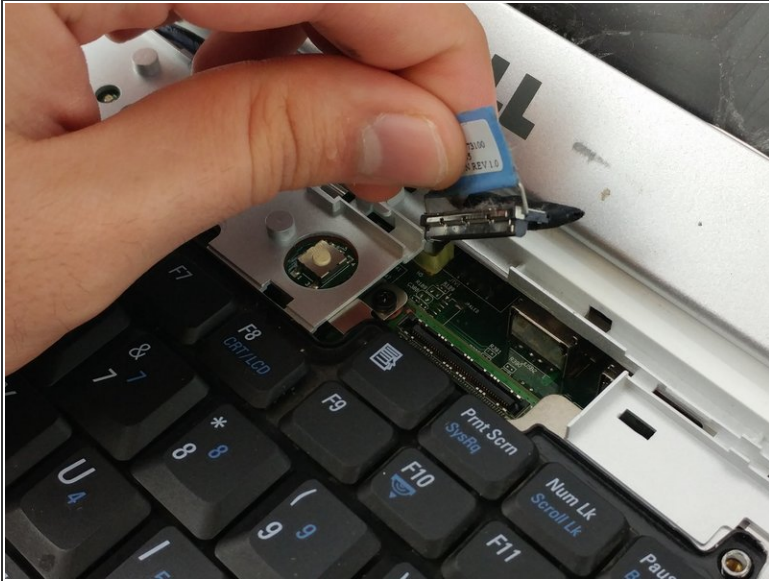
- Gently pry away the silver bezel above the keyboard and below the display using a spudger.
- ⓘ Start on the right hand side, where there is a notch in the bezel for easiest removal.

Step 3



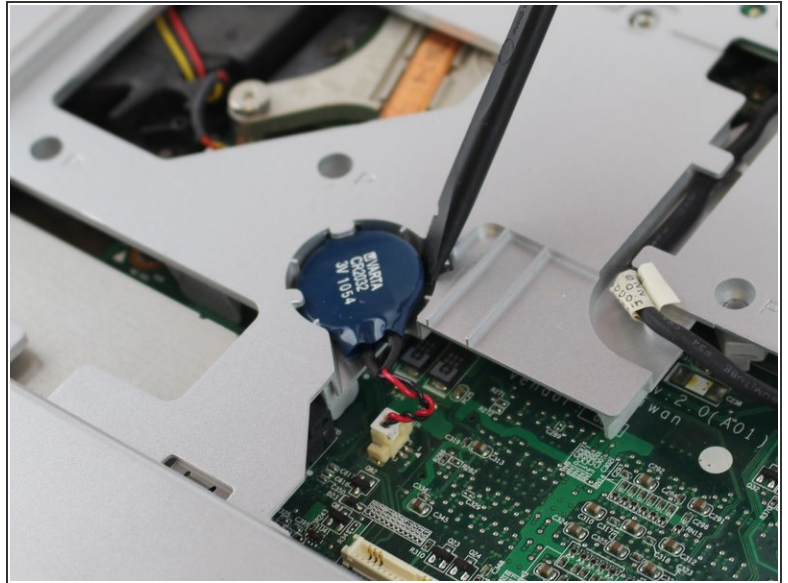
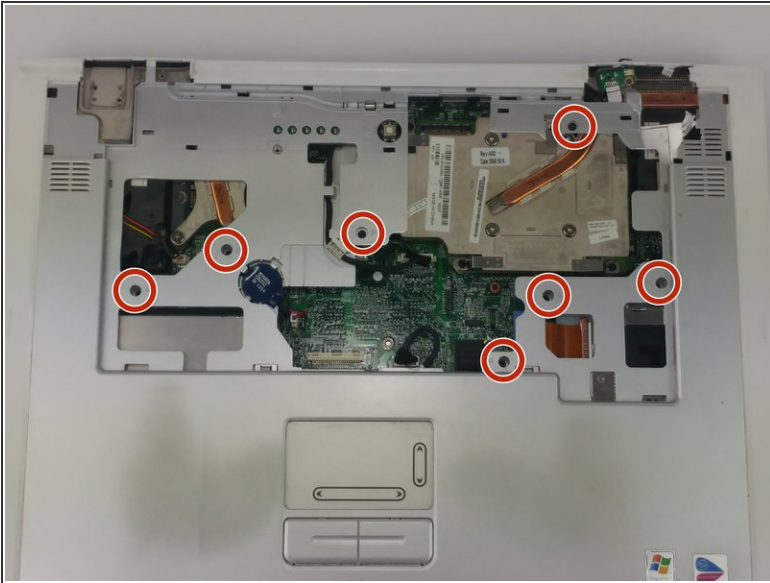
- Remove the two 5mm Phillips screws retaining the keyboard.
- Pull the keyboard up and toward the monitor to reveal the ribbon cable beneath.
- Firmly grasp the blue tape attached to the keyboard ribbon cable connector and pull upward away from the motherboard.

Step 4



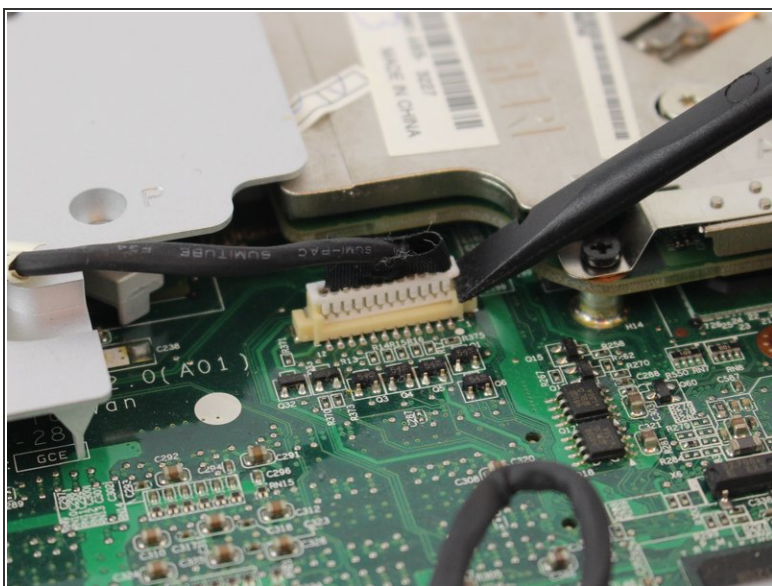
- Firmly grasp the blue tape attached to the LCD display ribbon cable connector and pull upward away from the motherboard.
 - Remove the two 5mm Phillips screws holding the display hinge on both sides of the laptop.
- ⚠ Support the display as you loosen the hinges, to avoid the screen falling and breaking.

Step 5



- Remove the seven 6mm Phillips screws holding the trackpad/palm rest to the motherboard.
- Gently pry the CMOS battery out of its retaining clip using a spudger.

Step 6



- Remove the low profile connector for the keyboard status lights located next to the video card heat sink using a spudger.
- Remove the trackpad ribbon cable from the motherboard using a spudger.

Step 7



- Pull up and away on the track pad to expose the internal components below.

Step 8 — Video Card



- Loosen the four 5mm Phillips screws holding the video card and heatsink in place
- ⓘ The screws are held in place with retainer clips and are not fully removable

Step 9



- Firmly pull up to unseat the video card from the motherboard.

To reassemble your device, follow these instructions in reverse order.