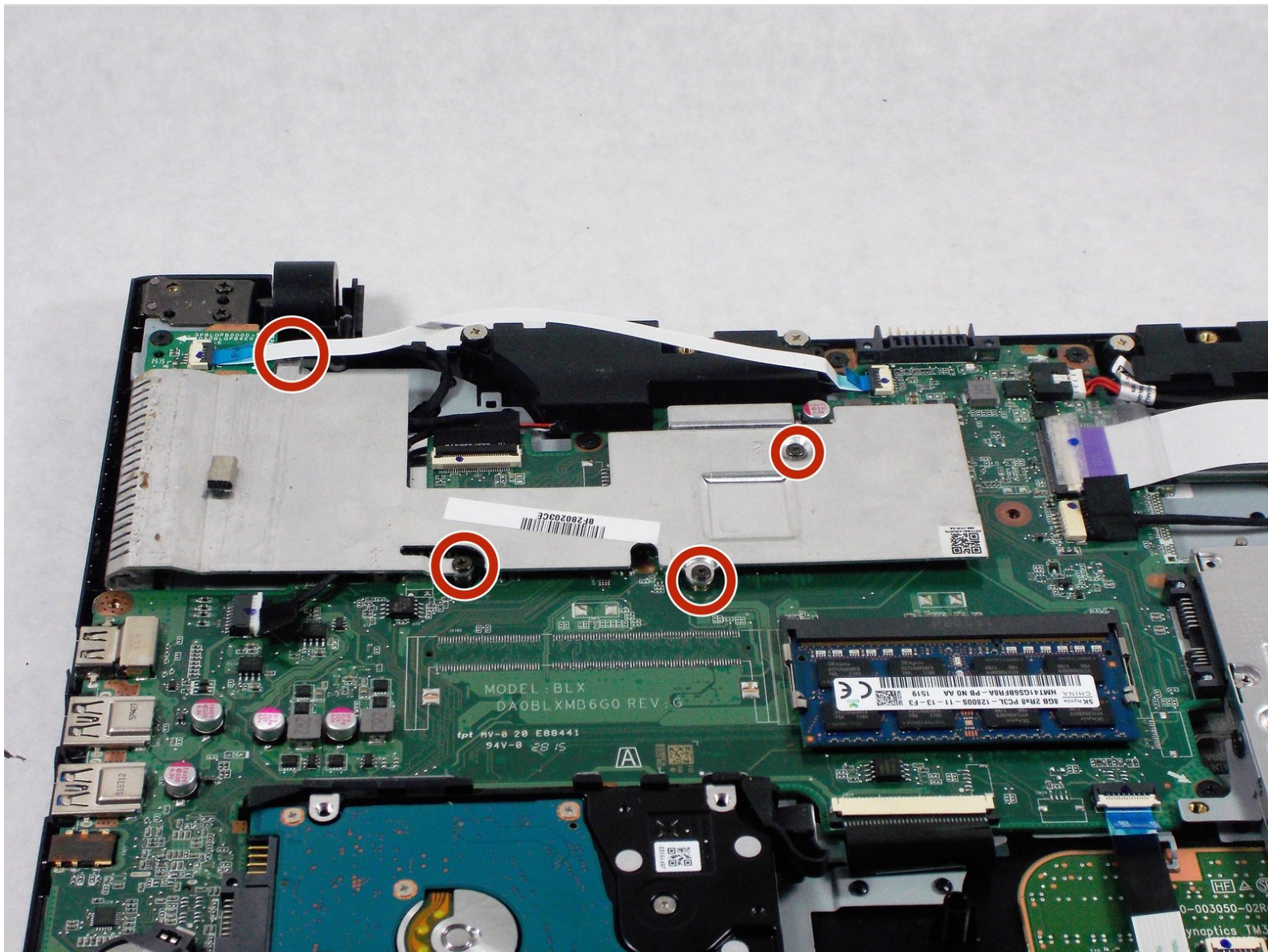




Toshiba Satellite C55-C5268 Heat Sink Replacement

Heat Sinks are used to cool central processing units or graphic processors like in the Toshiba Satellite. When they no longer work it is vital to replace them. In the Toshiba Satellite C55-C5268 the heat sink can be found underneath the back panel.

Written By: Ben Rounseville



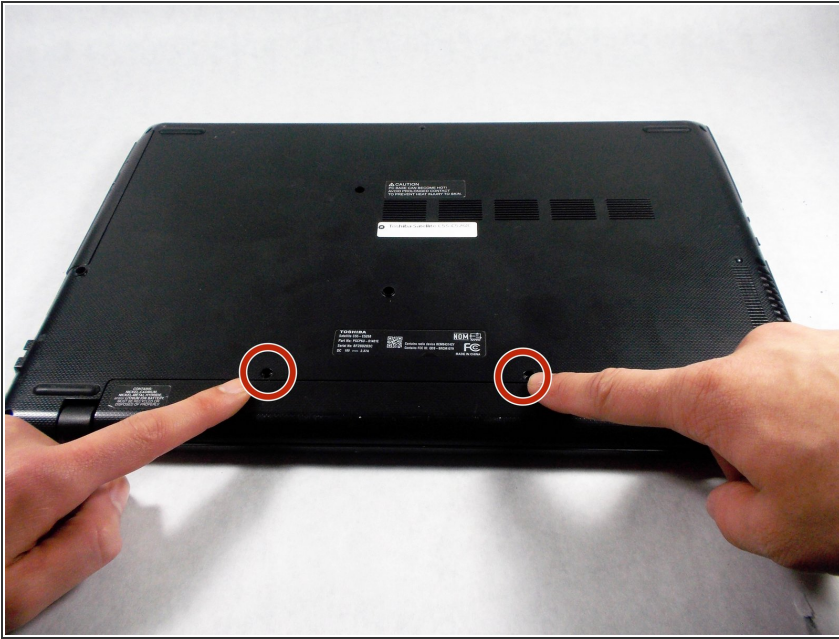
INTRODUCTION


This guide will show you how to properly remove and replace the Heat Sinks.

TOOLS:

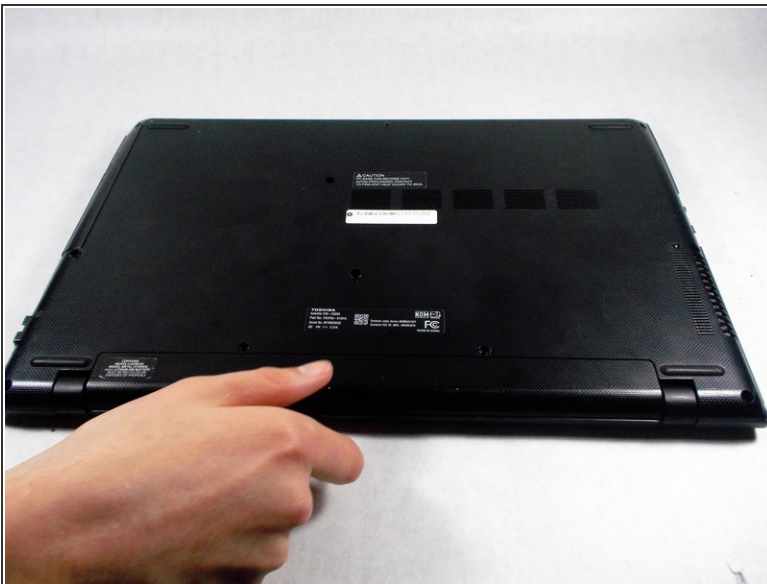
- [Spudger](#) (1)
 - [Phillips #1 Screwdriver](#) (1)
-


Step 1 — Battery



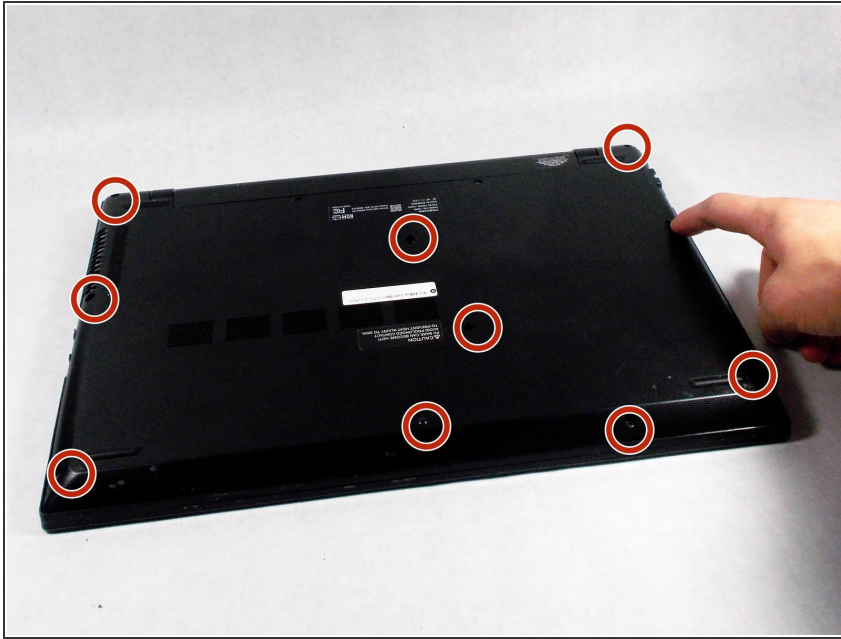
-  Unplug and power off the laptop.
- Unscrew the two 9 mm Phillips #1 screws holding the battery in place.

Step 2



- Grab the battery and pull it away from the laptop to remove it.
-  This doesn't require a lot of effort, so you don't have to pull too hard.


Step 3 — Back Panel



- Unscrew the 10 9.0 mm screws holding the back panel on using a Phillips head #1 screwdriver.

Step 4



 Using a metal spudger can damage sensitive components.

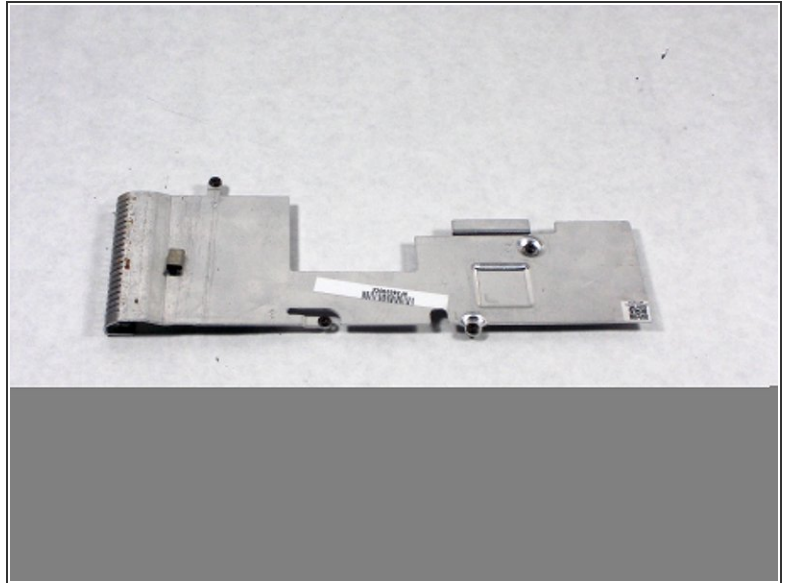
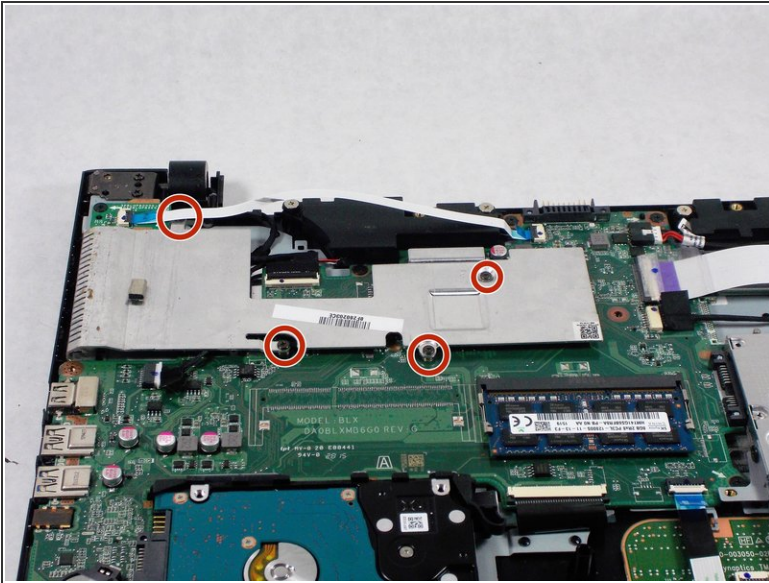
- Insert a metal spudger tool in the seam between the back cover and the laptop itself. Gently run the spudger around the edge to pop the cover off.

Step 5



- Pry up the back panel from the rest of the laptop using a spudger.
- ⓘ It is best to start around the USB port and work your way around the edge until the panel completely snaps off.

Step 6 — Heat Sink



- Unscrew the four 5.0 mm screws holding the heat sink in place using #1 Phillips screwdriver.
- ⓘ The 5.0 mm screws can unscrew from the laptop, but stay attached to the heat sink.
- ⓘ One of the screws is underneath a ribbon. Be sure to gently move the ribbon out of the way first.
- ✦ Be sure to screw the replacement heat sink in the correct way.

To reassemble your device, follow these instructions in reverse order.