



Dell Inspiron 1525 Wireless Mini-Card Replacement

Replace the Wireless Mini-Card in a Dell Inspiron 1525.

Written By: Miroslav Djuric



INTRODUCTION

Use this guide to help you replace the Wireless Mini-Card in a Dell Inspiron 1525.



TOOLS:

- [Phillips #1 Screwdriver](#) (1)
 - [Spudger](#) (1)
-

Step 1 — Battery



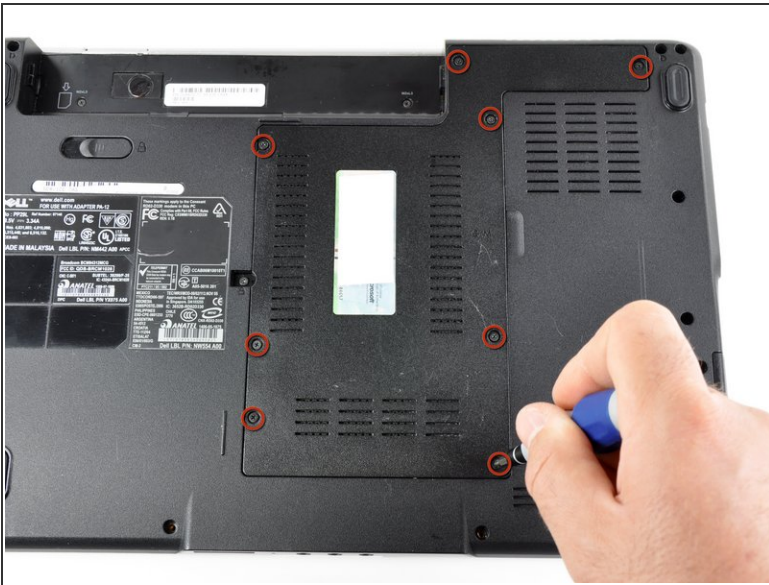
- Locate the battery release switch on the bottom of the laptop.

Step 2



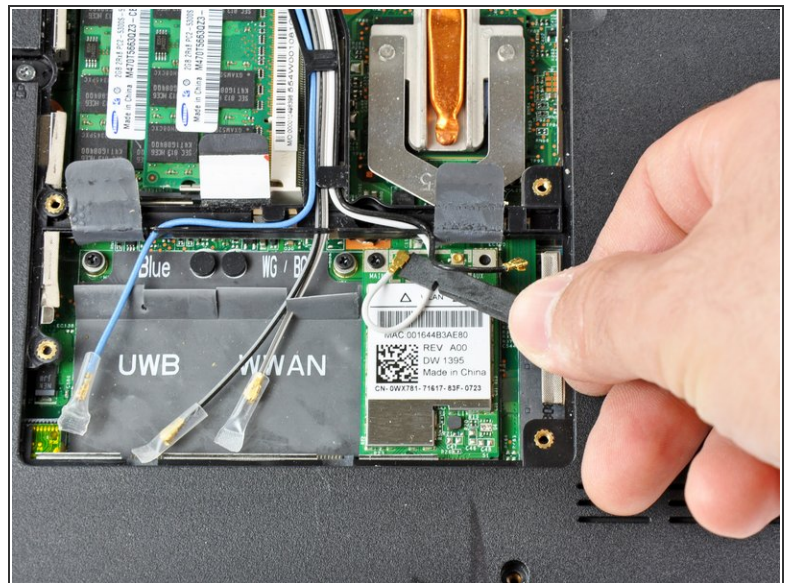
- Slide the battery release switch away from the lock symbol until you hear the battery click.
- Slide the battery towards the back of the laptop until it comes free.

Step 3 — Bottom Cover



- Remove/loosen the eight 4.80 mm Phillips #1 screws securing the bottom panel.
 - The screws may only need to be loosened, as they are generally retained by plastic washers.
- Remove the bottom panel.

Step 4 — Wireless Mini-Card



- Use the flat end of a spudger to gently pry the black and white antenna connectors off the Wireless Mini-Card.

This document was generated on 2020-11-16 12:33:02 PM (MST).

Step 5



- Remove the 3.70 mm Phillips #1 screw securing the card to the laptop.
 - ⓘ The card will tilt up when you remove the screw.
- Slide the card straight out.

To reassemble your device, follow these instructions in reverse order.