



MacBook Pro 15" Unibody Late 2011 Optical Drive Cable Replacement

Replace a damaged optical drive cable on your Late 2011 MacBook Pro 15" Unibody.

Written By: Miroslav Djuric



INTRODUCTION

Use this guide to replace the short optical drive ribbon cable connecting the optical drive to the logic board.



TOOLS:

- [Phillips #00 Screwdriver](#) (1)
- [Spudger](#) (1)
- [T6 Torx Screwdriver](#) (1)



PARTS:

- [MacBook Pro 15" Unibody \(Mid 2009/Mid 2010/Early 2011/Late 2011\) SATA SuperDrive Cable](#) (1)

Step 1 — Lower Case



- Remove the following ten screws securing the lower case to the upper case:
 - Three 13.5 mm (14.1 mm) Phillips screws.
 - Seven 3 mm Phillips screws.

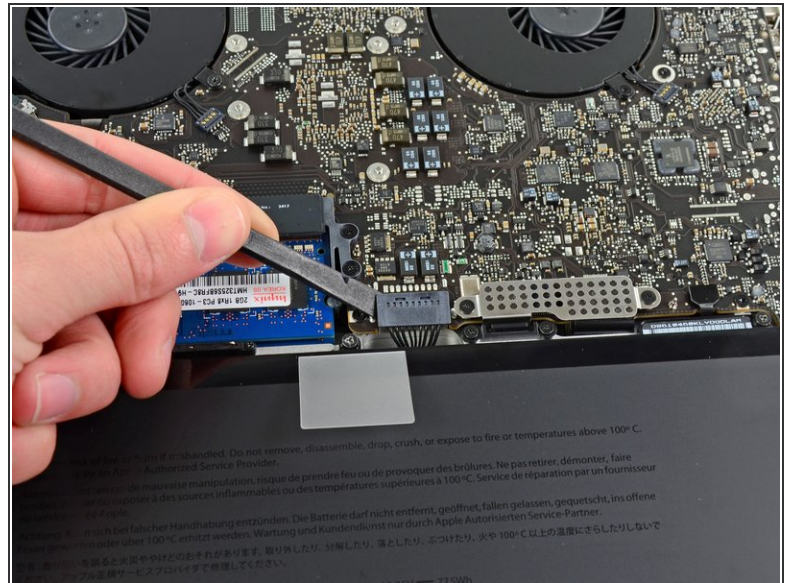
★ When removing these screws, note how they come out at a slight angle. They must be reinstalled the same way.

Step 2



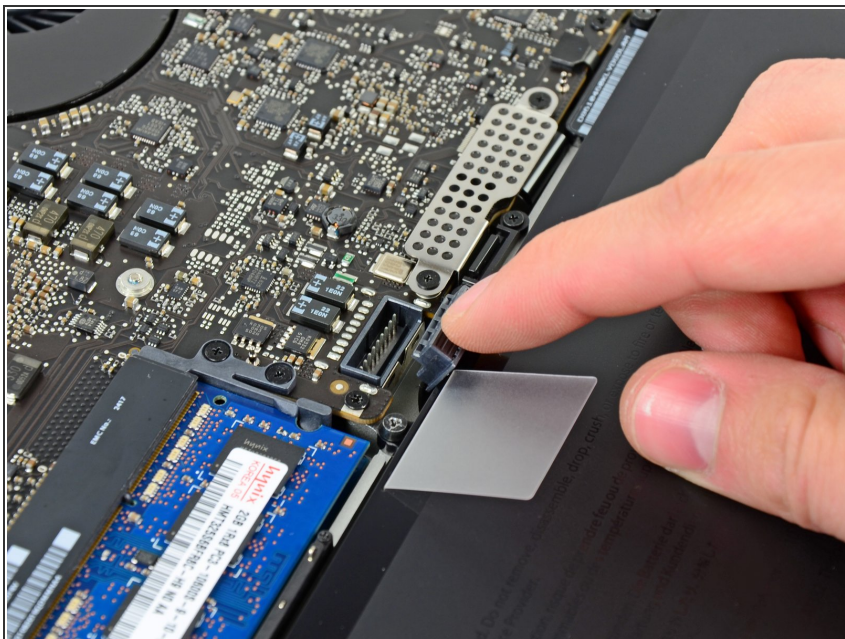
- Using both hands, lift the lower case near the vent to pop it off two clips securing it to the upper case.
- Remove the lower case and set it aside.

Step 3 — Battery Connector



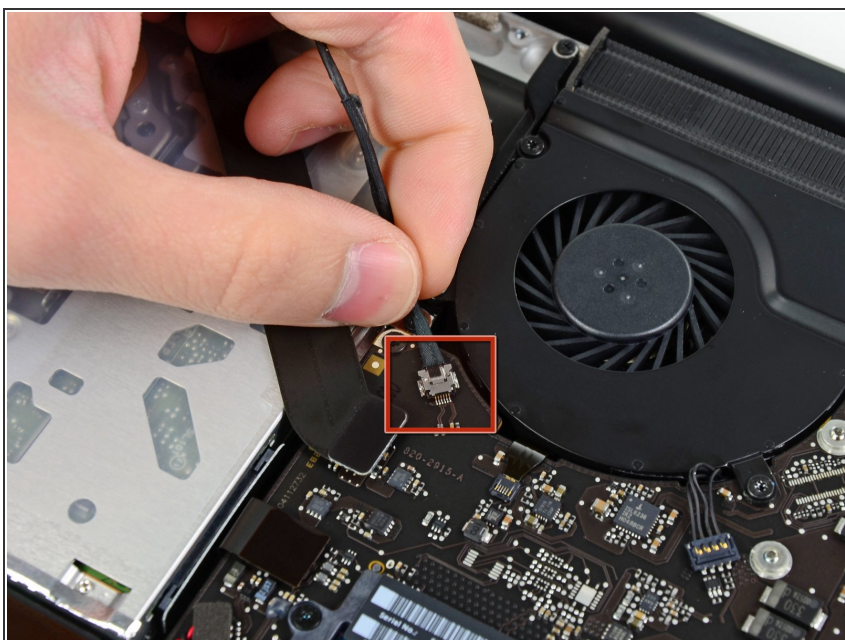
- ☑ For certain repairs (e.g. hard drive), disconnecting the battery connector is not necessary but is recommended as it prevents any accidental shorting of electronics on the motherboard. If you do not disconnect the battery connector, please be careful as parts of the motherboard might be electrified.
- Use the edge of a spudger to pry the battery connector upwards from its socket on the logic board.
- ℹ It is useful to pry upward on both short sides of the connector to "walk" it out of its socket.

Step 4



- Bend the battery cable slightly away from its socket on the logic board so it does not accidentally connect itself while you work.

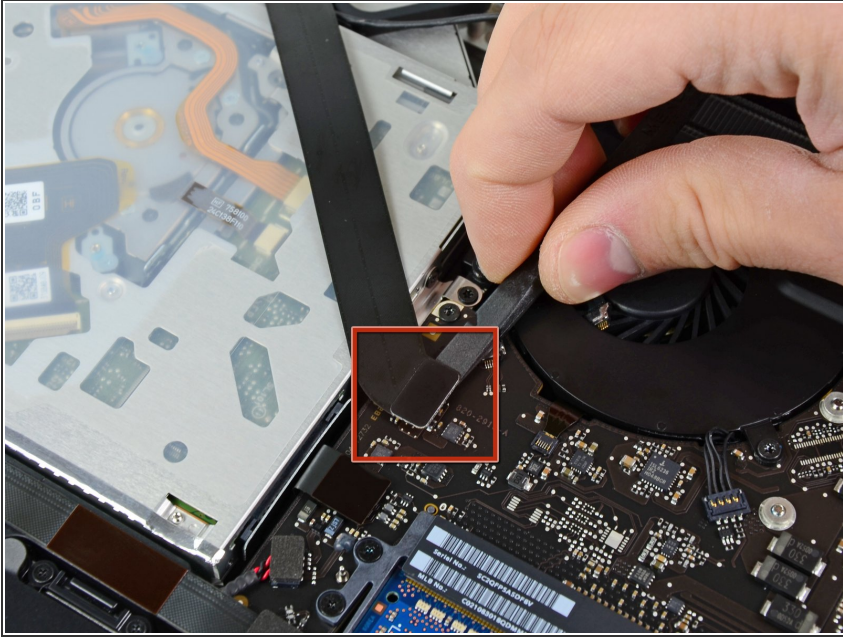
Step 5 — Optical Drive



- Disconnect the camera cable connector from its socket on the logic board.

⚠ Do not lift up on the cable as you disconnect it from the logic board. Pull the cable parallel to the face of the logic board.

Step 6



- Use the flat end of a spudger to pry the AirPort/Bluetooth connector up from its socket on the logic board.

Step 7



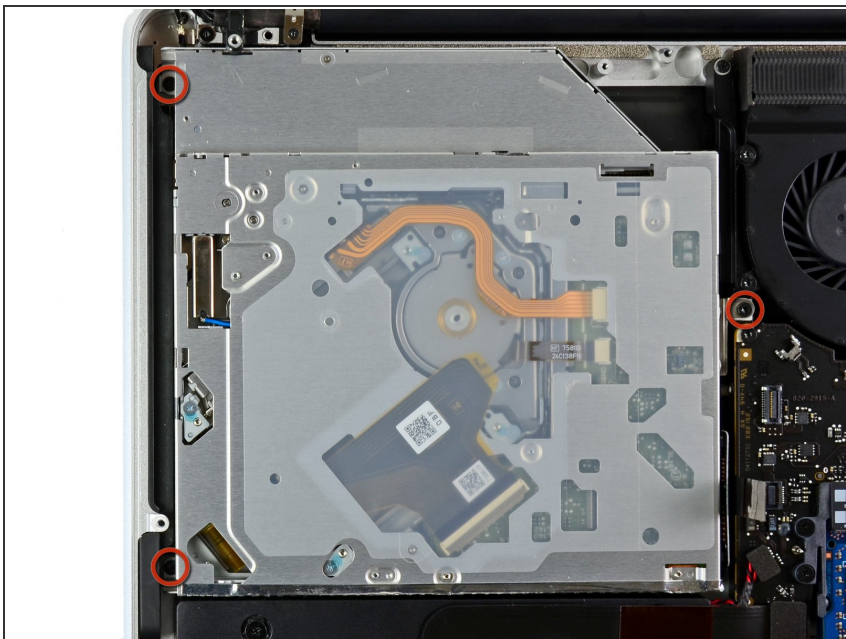
- Use the flat end of a spudger to pry the optical drive connector up from its socket on the logic board.

Step 8



- Remove following two screws:
 - ⚠ Take care, as these screws are unusually easy to strip. Apply firm pressure while unscrewing. Read comments before proceeding.
 - One 8.6 mm Phillips screw
 - One 3.9 mm Phillips screw
- Carefully rotate the AirPort/Bluetooth board housing (with AirPort/Antenna cables still attached) out of the lower case.

Step 9



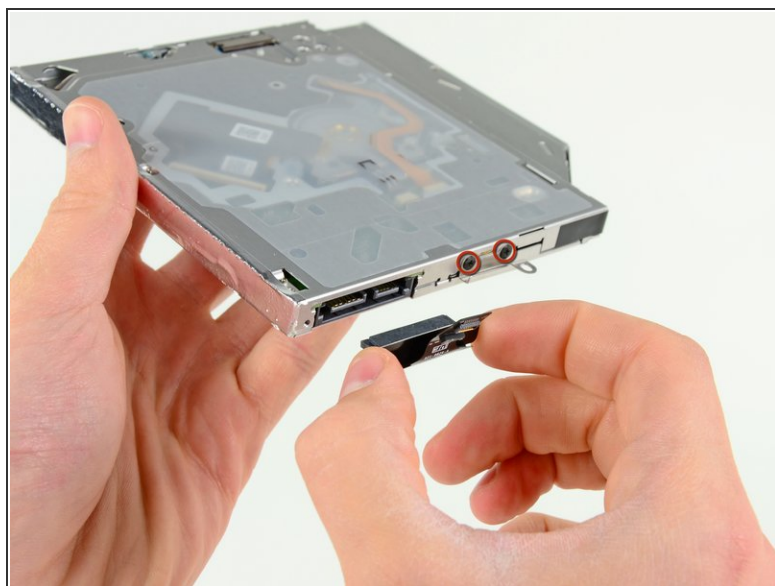
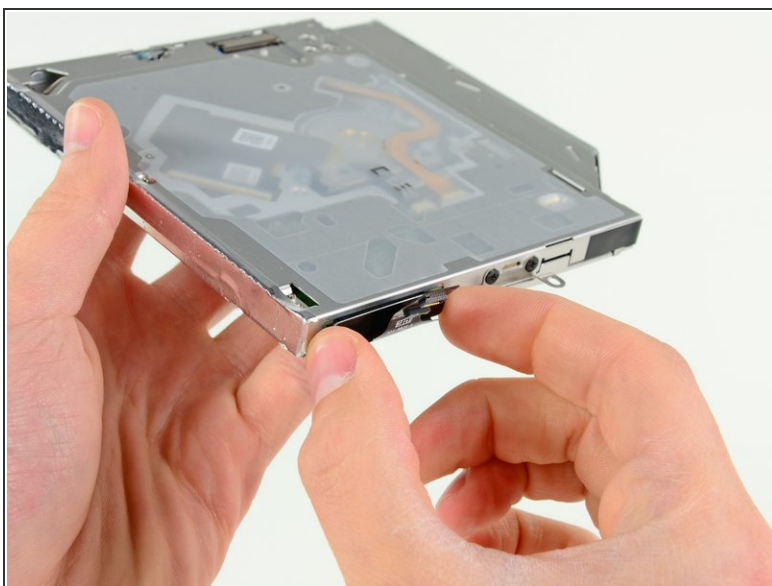
- Remove the three 3.5 mm T6 Torx screws securing the optical drive to the upper case.

Step 10



- Lift the optical drive near its connector and pull it away from the upper case to remove it from the computer.

Step 11 — Optical Drive Cable



- Pull the optical drive cable out of the optical drive.

 Be sure to pull by the edges of the connector, not by the cable itself.

- Remove the two black Phillips #0 screws securing the small metal mounting bracket. Transfer this bracket to your new optical drive or [hard drive enclosure](#).

To reassemble your device, follow these instructions in reverse order.