



Samsung Galaxy Tab S2 SIM/SD Card Reader Replacement

Replace your SIM and microSD card reader assembly or remove it to retrieve a stuck card.

Written By: ekim1389



INTRODUCTION


Use this guide to remove or replace the SIM card / microSD card reader in your Tab S2. If your card is stuck or jammed in place, this guide can help you retrieve it.


TOOLS:

- [iOpener](#) (1)
 - [iFixit Opening Tools](#) (1)
 - [Tweezers](#) (1)
 - [Suction Handle](#) (1)
 - [Phillips #1 Screwdriver](#) (1)
-

Step 1 — Screen

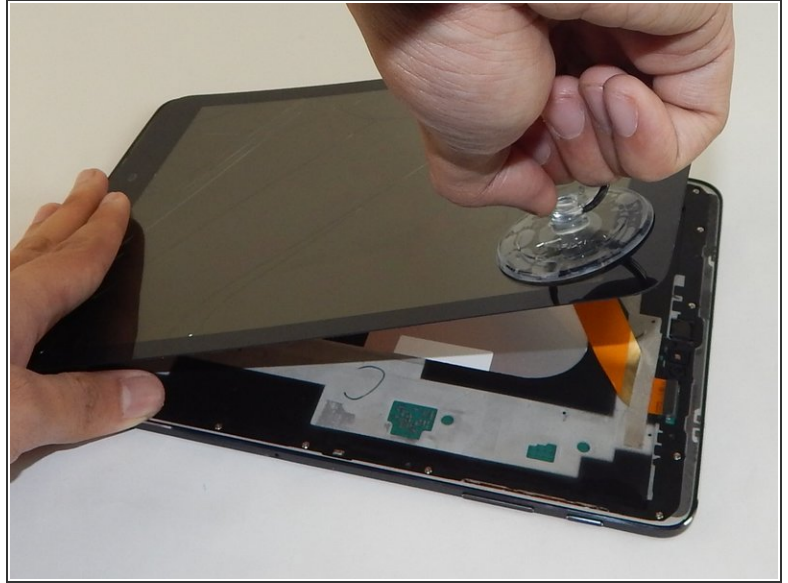


 Working on your device while it is turned on may result in an electric shock. Be sure to shut down and unplug your device before you begin.


 Removing the screen may be difficult due to strong adhesives.

- Apply heat to all the seams of the device using an iFixit iOpener or heat gun in order to loosen the adhesive around the edges of the screen.

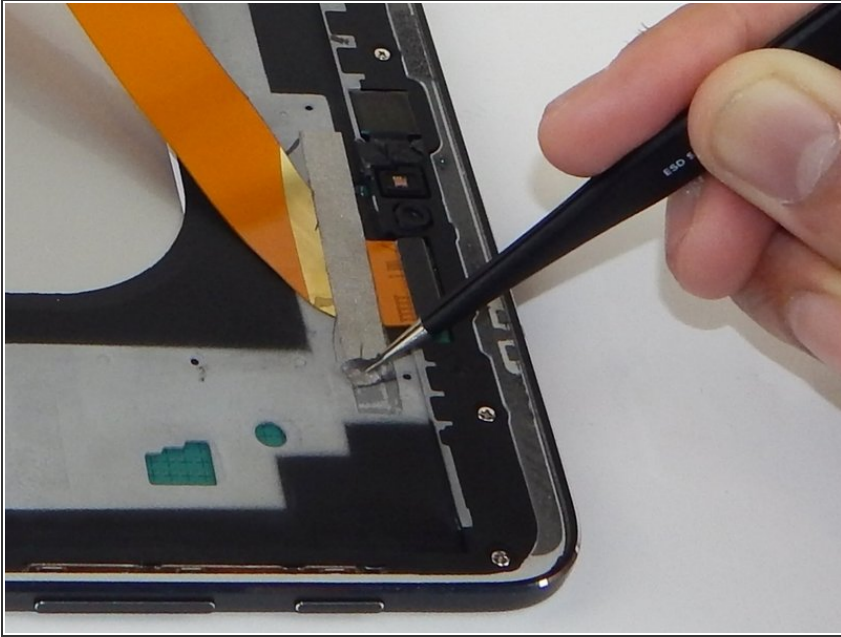
Step 2



- Insert the plastic opening tool into the gap on the side of the tablet, near a corner where you want to start removing the screen.
- Place the small suction cup on the screen near the corner that the plastic opening tool is placed.
- Lift the small suction cup up while pushing down with the plastic opening tool to remove screen (you may need to have someone else hold the device down for proper leverage).

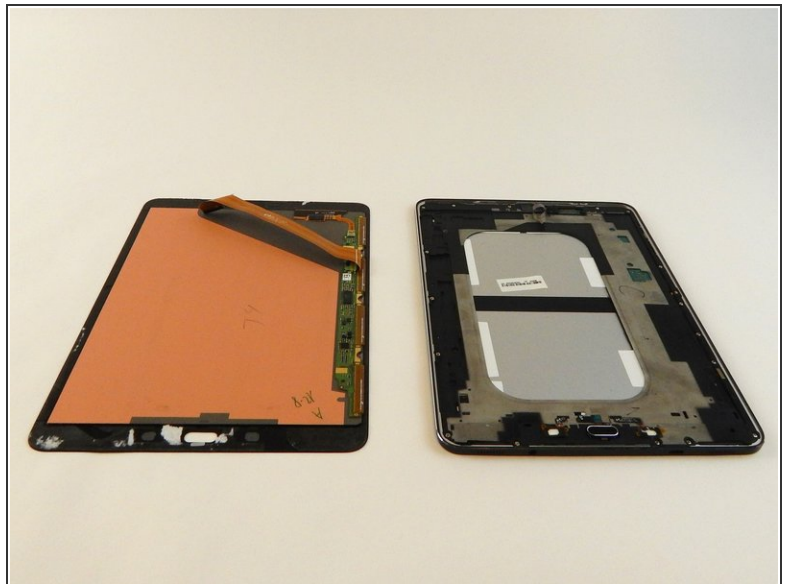
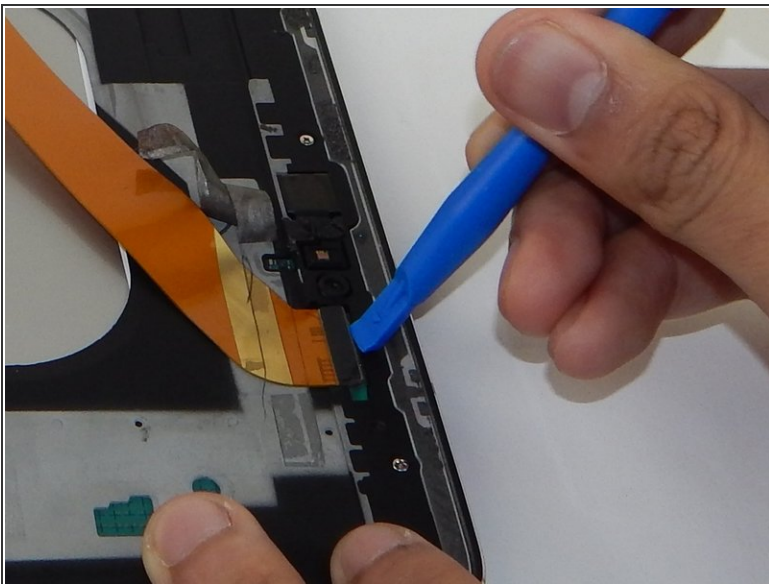
 A ribbon cable is attached to the back of the screen. Avoid lifting or moving the screen more than 3-4 inches before disconnecting the ribbon cable or you could damage the device.

Step 3



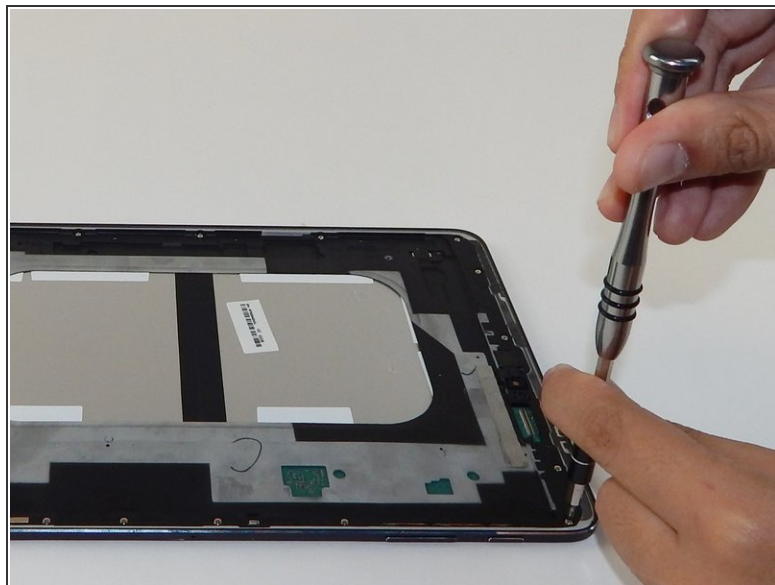
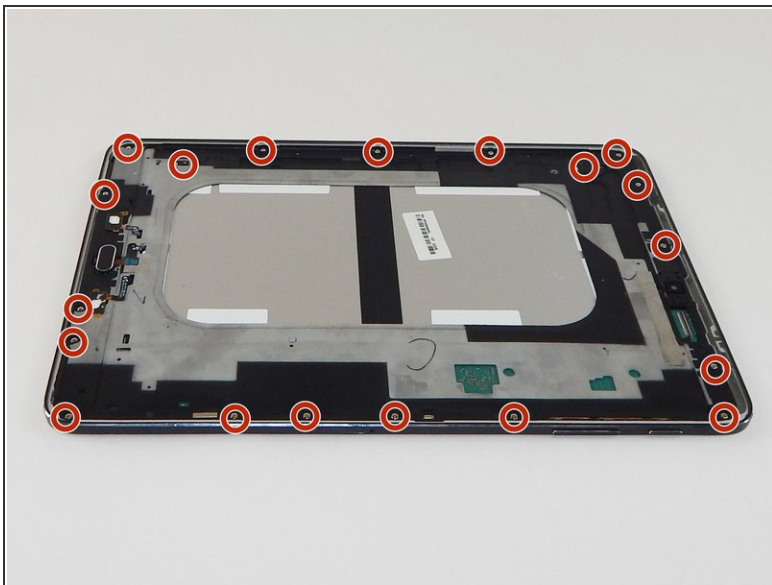
- ❗ A piece of silver tape is placed over the gold ribbon cable connecting the screen to the tablet.
- Use the tweezers to carefully remove the silver tape.

Step 4



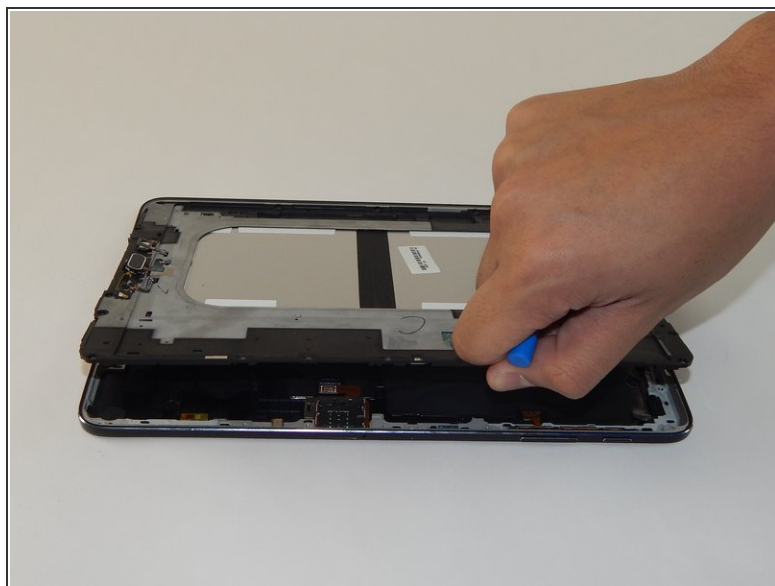
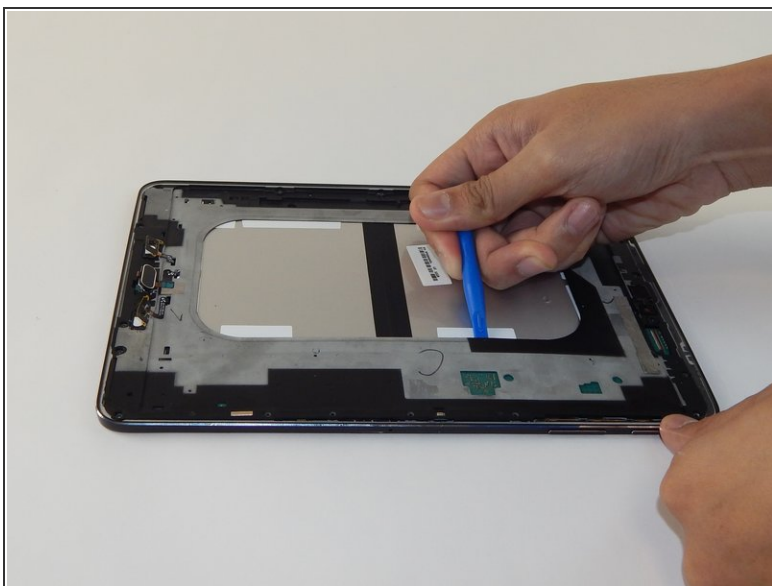
- With the plastic opening tool gently lift to disconnect the gold ribbon cable that attaches the screen to the base tablet.

Step 5 — Panel Replacement



- Remove the nineteen 3mm Phillips #1 screws.

Step 6



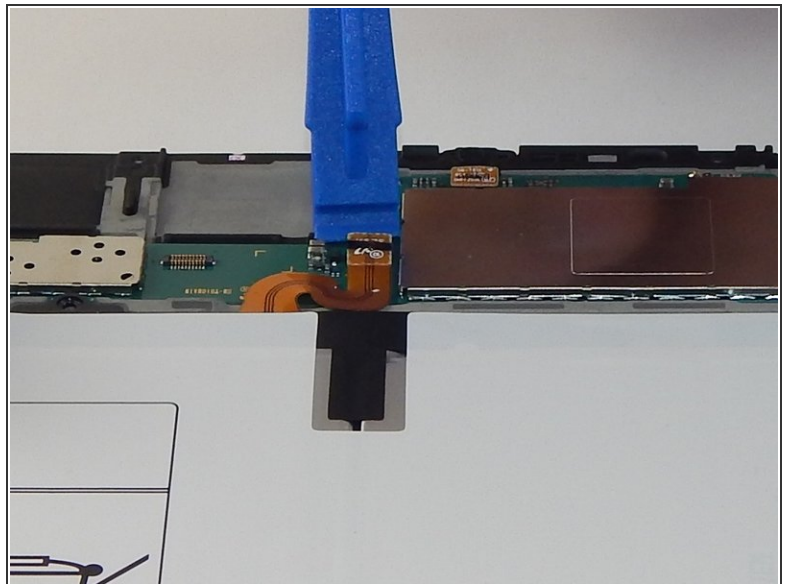
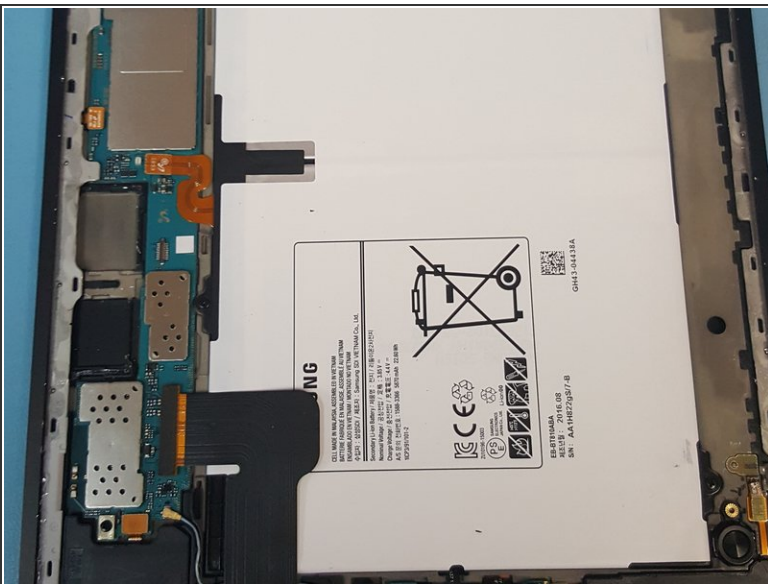
- Pry open the next layer of the device using the plastic opening tool.
- ⓘ Even though the device separates along the outside edge, using the inside edge (as pictured) may help with leverage.


Step 7 — SIM Card Reader



- As you can see here, the SIM card is stuck.

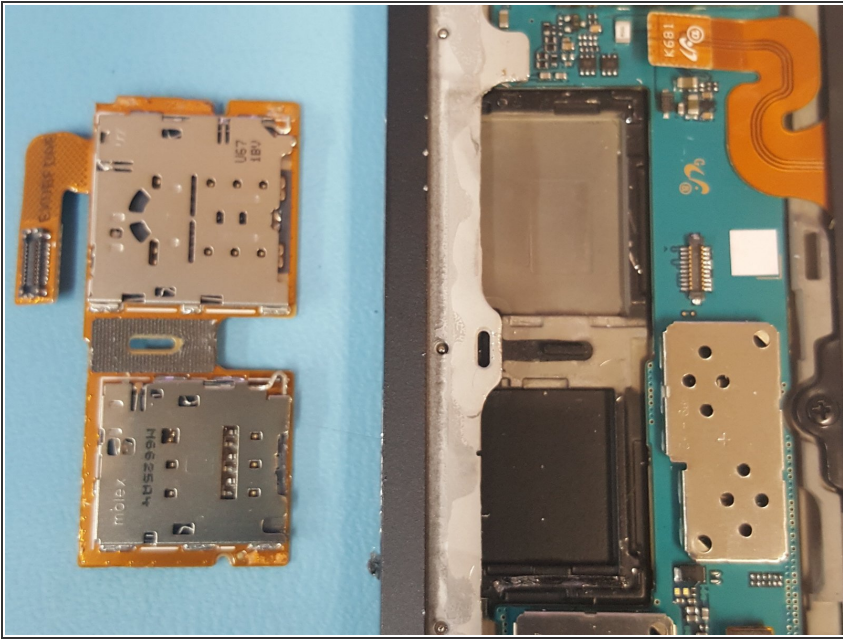
Step 8



 Before doing anything to this device, you must first disconnect the battery and the SIM card reader off the main board.

- Using a plastic opening tool, pry up and disconnect the cable that connects the battery to the device.

Step 9



- Disconnect the SIM card reader flex cable as well, and then carefully pry the SIM card/microSD card reader out.

To reassemble your Tab S2, follow these instructions in reverse order.