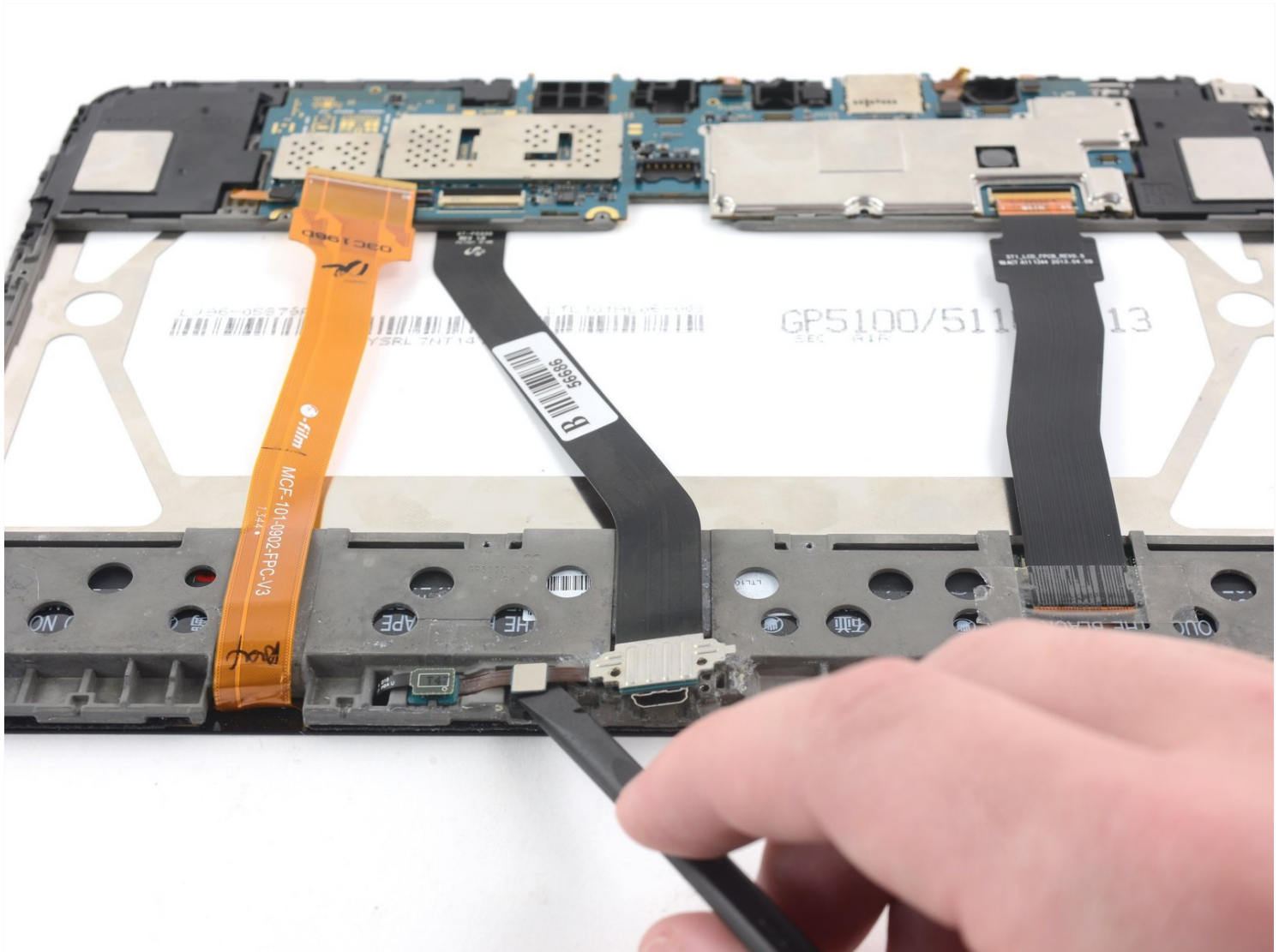




Samsung Galaxy Tab 3 10.1 Charging Port & Microphone Replacement

If you have a defective charging port or...

Written By: Corey Brown



INTRODUCTION

If you have a defective charging port or microphone, use this guide to remove the component and replace it. The charging port is connected to a ribbon cable that is also connected to the microphone. You'll need to replace the whole assembly if either component is damaged.

TOOLS:

[iFixit Opening Picks \(Set of 6\)](#) (1)
[Spudger](#) (1)
[Phillips #000 Screwdriver](#) (1)

PARTS:

[Galaxy Tab 3 10.1 USB Connector Assembly](#) (1)

Step 1 — Rear Case



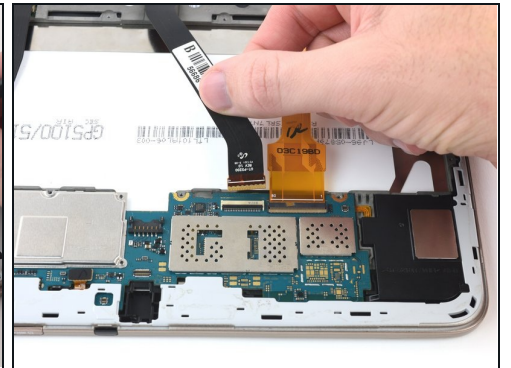
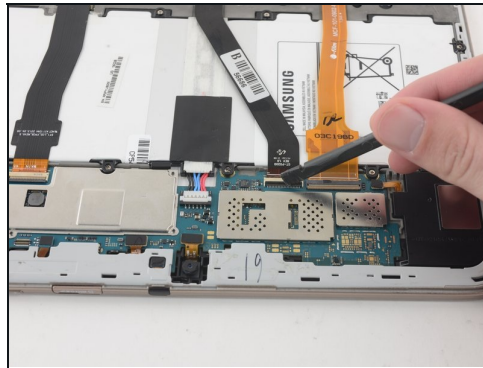
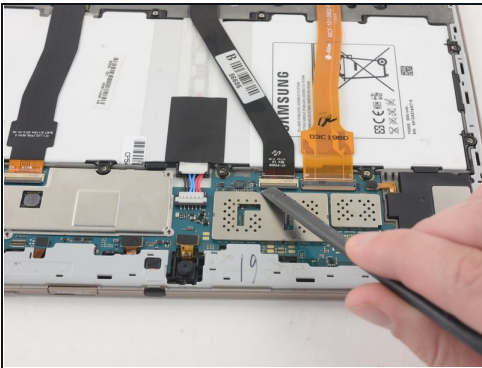
- Insert an opening pick between the rear case and the plastic rim.
- ① You may need to add multiple picks to detach the clips.
- Slide the pick along the edge of the rear case until you release the plastic clips attaching the rear case to the display.
- Continue to slide the pick around the edge of the rear case until all clips are released.

Step 2



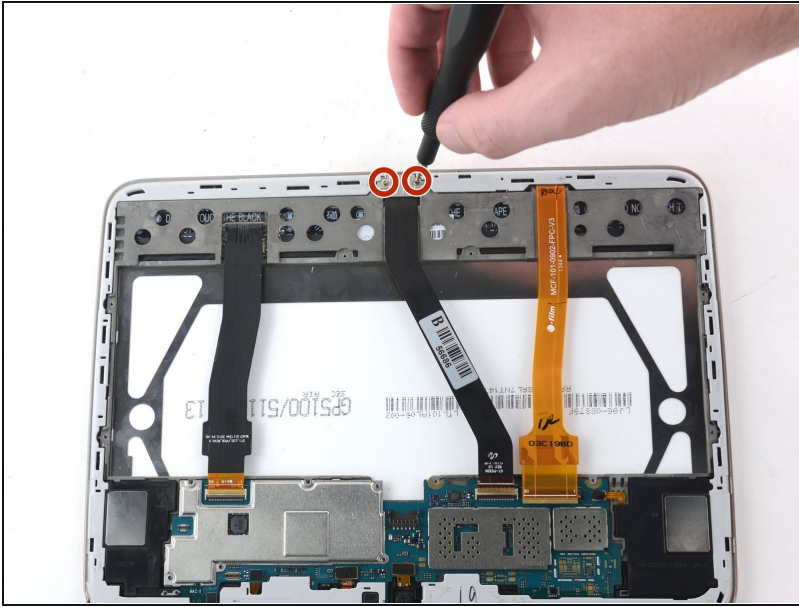
- Lift the case up to remove it.

Step 3 — Charging Port & Microphone



- Use the flat end of a nylon spudger to flip up the black plastic tab of the ZIF connector securing the charging port ribbon cable.
- Gently remove the cable by pulling back, away from the ZIF connector.

Step 4



- Use a Phillips #000 screwdriver to remove the two 3mm screws in the metal plate connecting the charging port to the display assembly.

Step 5



- Insert an opening pick between the plastic frame and the screen.
- Slide the opening pick around the perimeter of the screen.
 - ① You will hear clicking noises as each plastic clip is released from the display chassis.

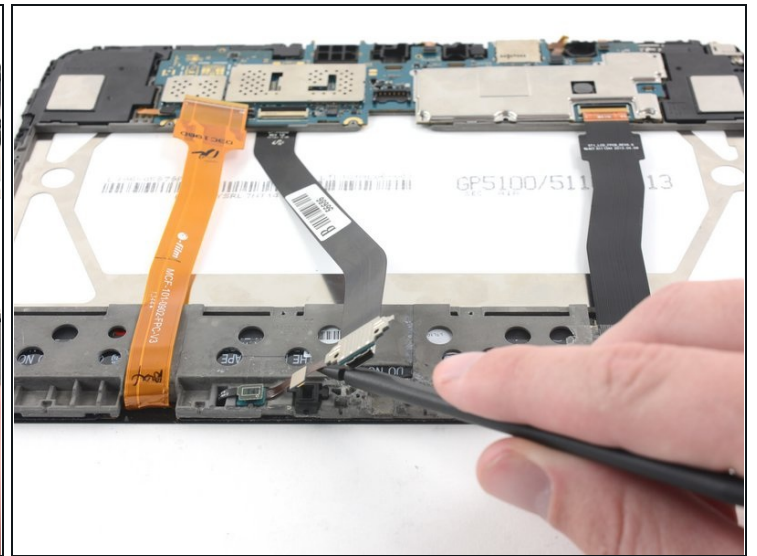
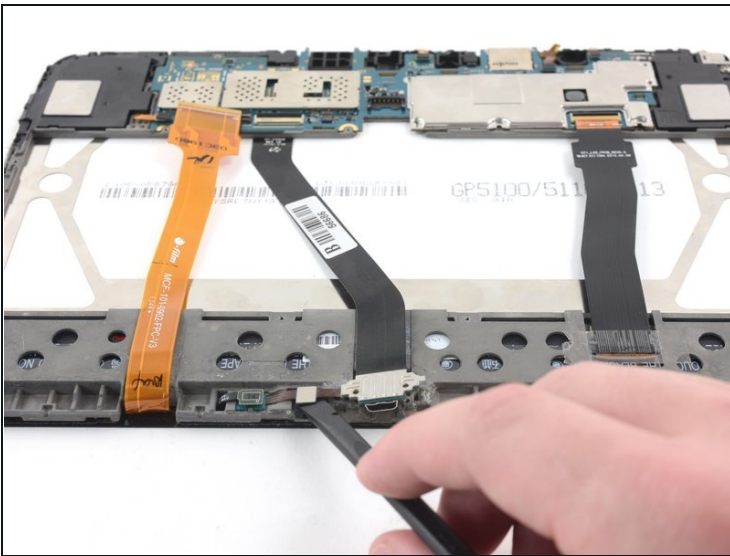
Step 6



- Lift the plastic frame to remove.

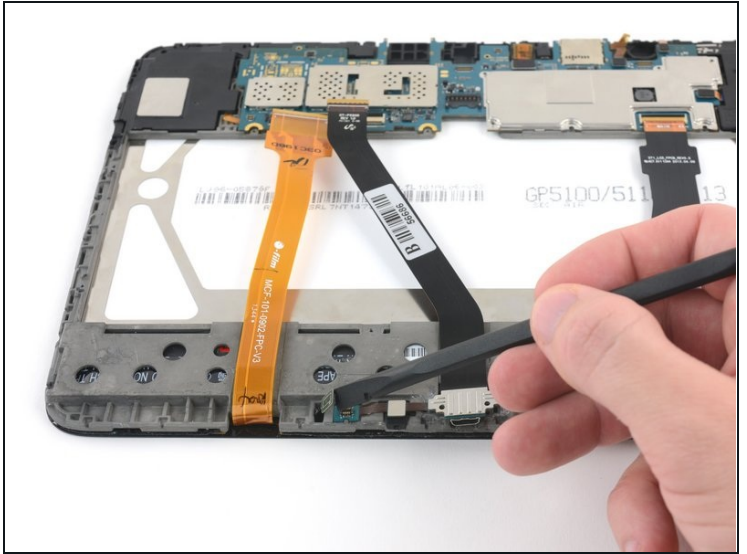
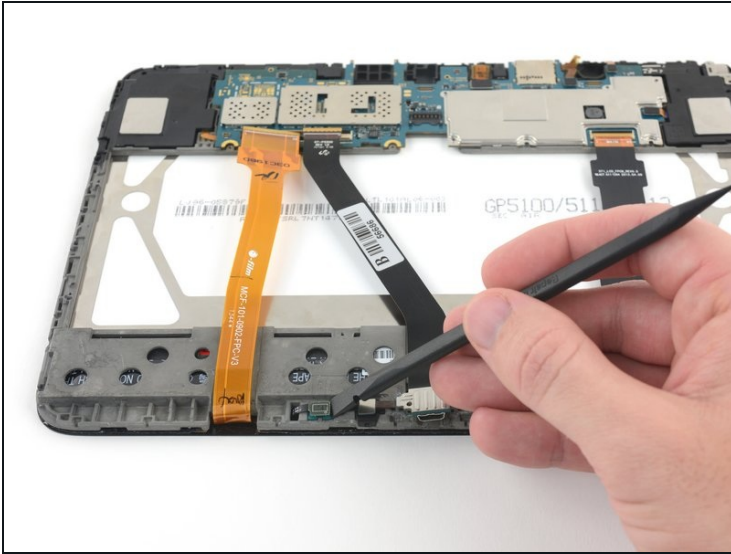
⚠ Avoid the three delicate ribbon cables.

Step 7



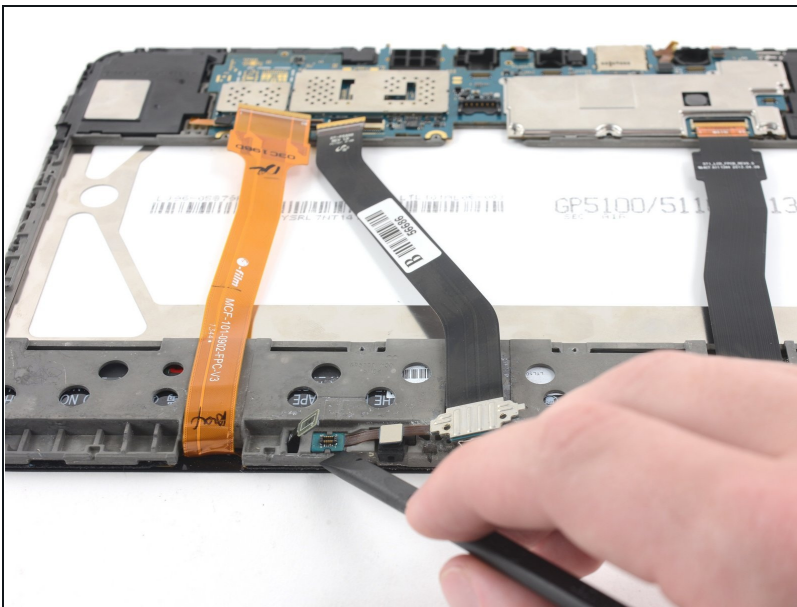
- Use the flat end of a nylon spudger to pry the microphone away from its black rubber housing.
 - ① There may be some adhesive holding these two components together.

Step 8



- Use the flat end of a plastic spudger to gently pry the press-fit connector from the microphone's ribbon cable.

Step 9



- Use the flat end of a plastic spudger to pry the connection board from the display chassis.
 - ① Work slowly as the board is connected with adhesive.
- Remove the charging port cable.

To reassemble your device, follow these instructions in reverse order.