



Canon PowerShot SD1000 Front Case Replacement

This is the removal of the Canon PowerShot SD1000 front panel.

Written By: Phillip Phung





TOOLS:

- [Phillips #00 Screwdriver](#) (1)
-

Step 1 — Back Panel



- Remove the two 2.9 mm screws from the side panel closest to the camera lens.

Step 2



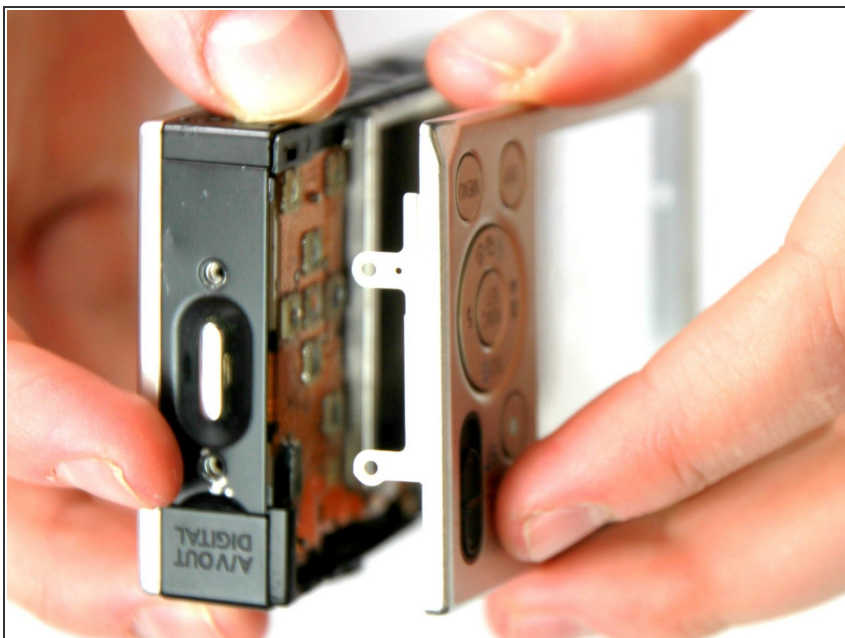
- Remove the two 2.9 mm screws from the camera bottom panel.

Step 3



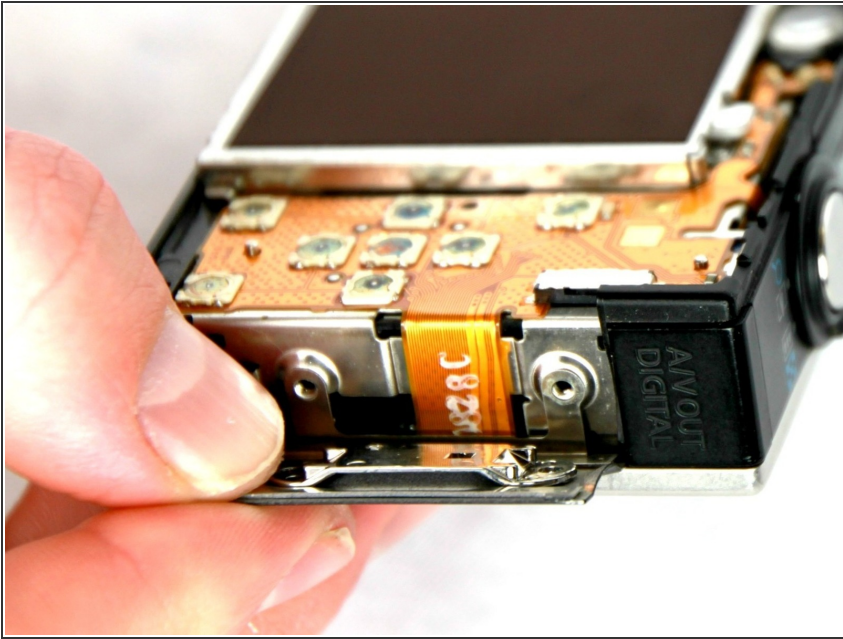
- Remove the two 2.9 mm screws from the side panel farthest from the lens.

Step 4



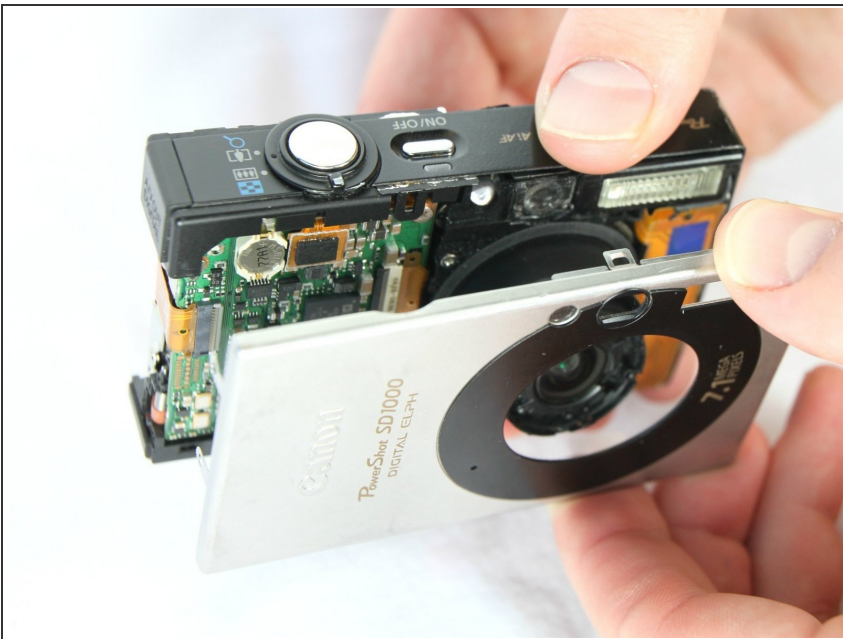
- Pull the back panel away from the camera body, starting at the end with the function buttons.

Step 5



- Remove the small cover panel and the attached wrist strap mount.

Step 6 — Front Case



- Remove the front cover by gently pulling it away from the camera body.

Step 7



- Place the front cover, back cover, and wrist strap mount in a safe place until you are ready for reassembly.

To reassemble your device, follow these instructions in reverse order.