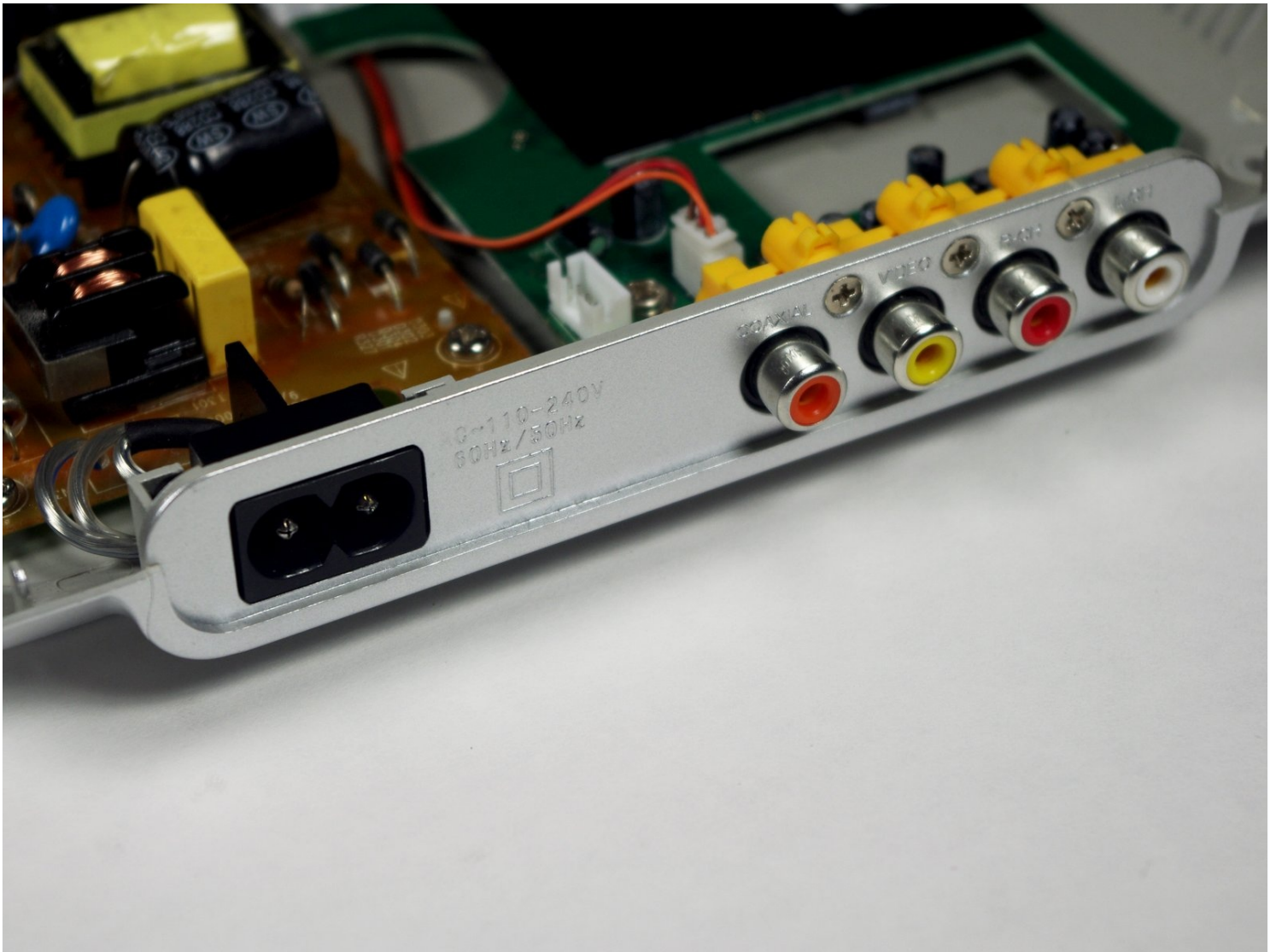




Coby DVD209 Power Port and AVI Port Replacement

Written By: Yufay Chow



🔧 TOOLS:

Phillips #1 Screwdriver (1)

Soldering Workstation (1)

iFixit Opening Tool (1)

Step 1 — The bottom portion of the DVD player



- Press the eject button to view the laser inside.
- Using the blue plastic tool and the [tweezers](#), remove the ribbon cable.

Step 2

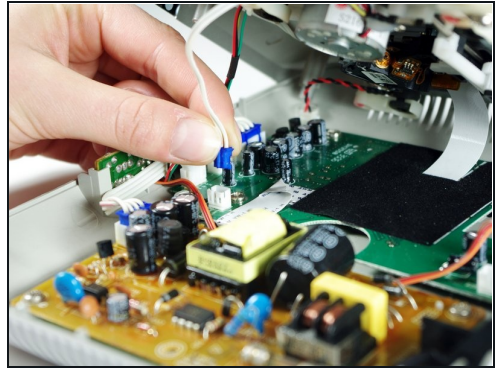
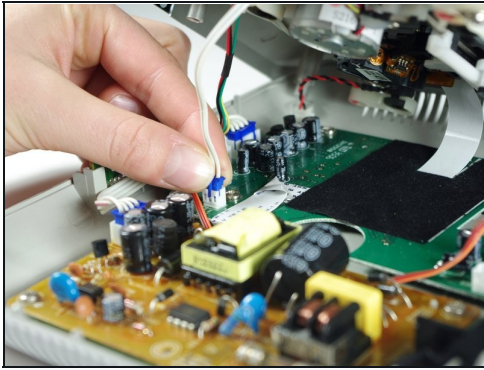
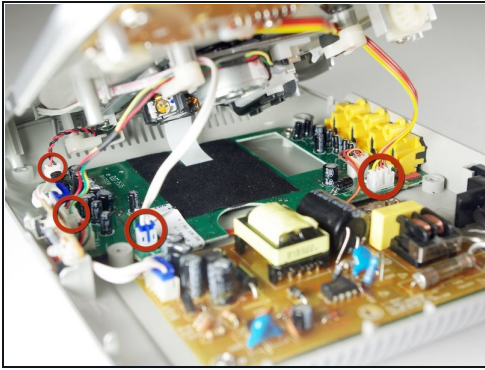


- Remove the six 1cm screws on the bottom of the device with the Phillips #1 screwdriver.

⚠ Do not lift the top of the DVD player too quickly because there are wires attached on the inside.

- Pry the top of the device open from the right side where the buttons are located.

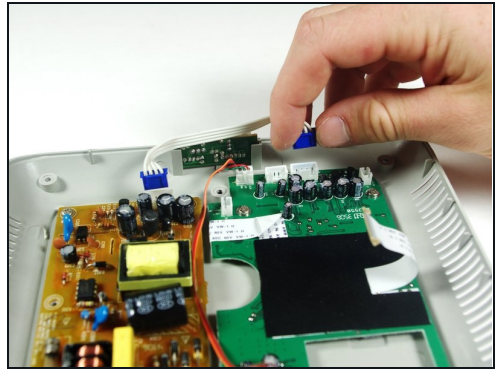
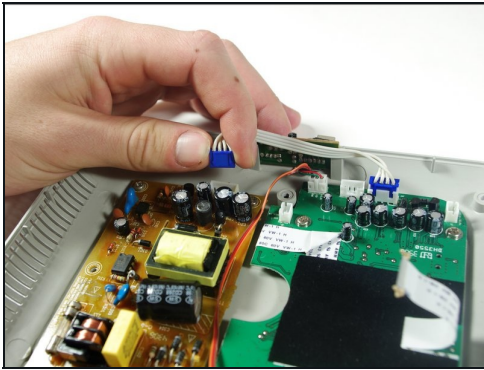
Step 3



⚠ When pulling the ribbon cables out, make sure not to pull by the wires, as this can cause damage to them.

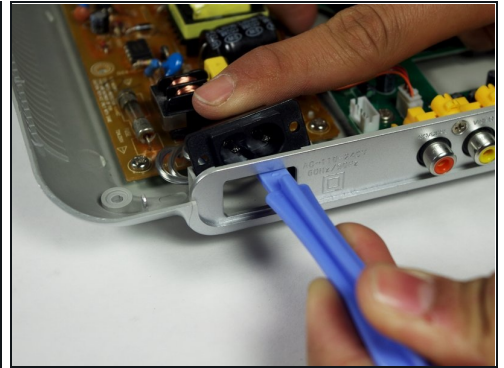
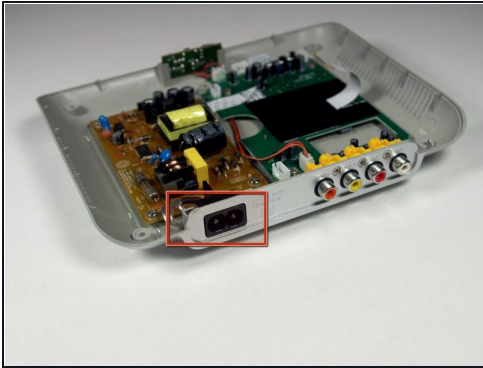
- Pinch the plastic adapter with two fingers to remove the wires circled in red from the circuit board.

Step 4 — 4-Pin Ribbon Cable



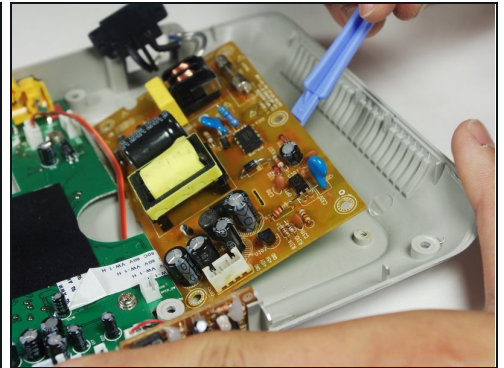
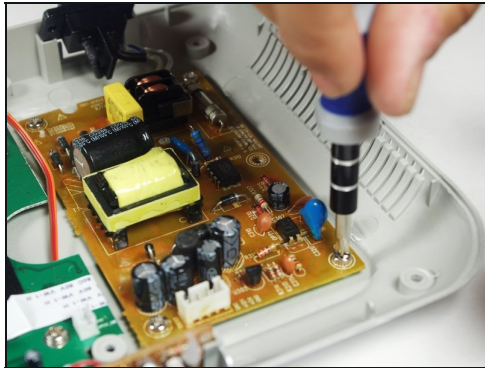
- Position the DVD player so that the power and AVI ports are facing you.
- Pull the white cable with the blue adapters off of the circuit boards.

Step 5 — Circuitboards



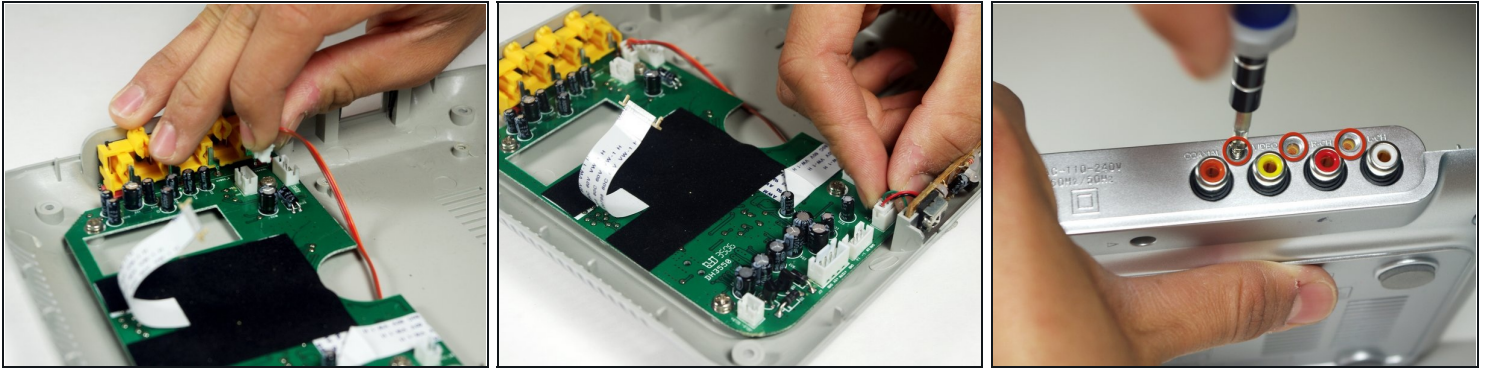
- Using the plastic opening tool and your finger, push on the black tab on the inner part of the power port and lift the bottom outer portion of the power port with the plastic opening tool simultaneously.
- Lift the power port out of its slot.

Step 6



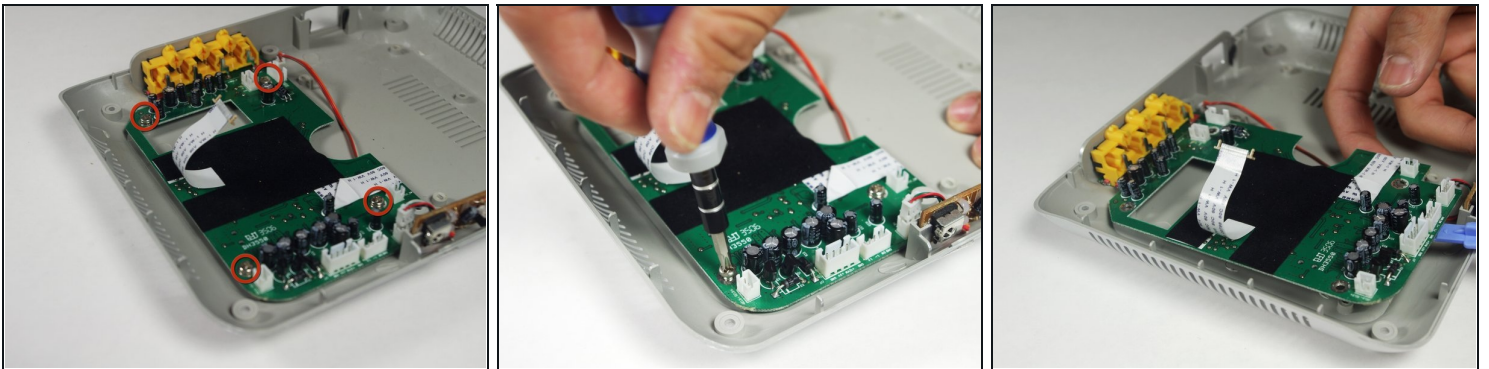
- Remove the four 5mm screws circled in red.
- Place the blue plastic tool opener underneath the circuit board and lift up gently.

Step 7



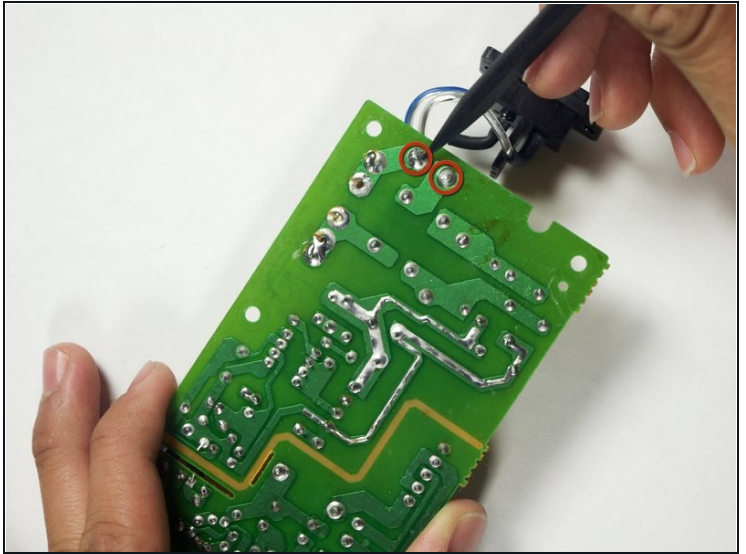
- Unplug the two, 3-pin ribbon cables, which are attached to the circuitboard.
- For the other circuit board (the one connected to the AVI ports) there are three 6.35mm screws to remove on the outside of the device.

Step 8



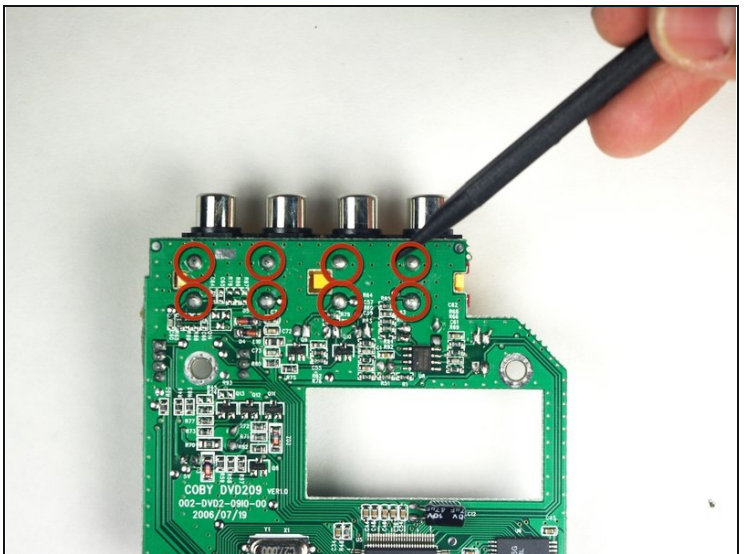
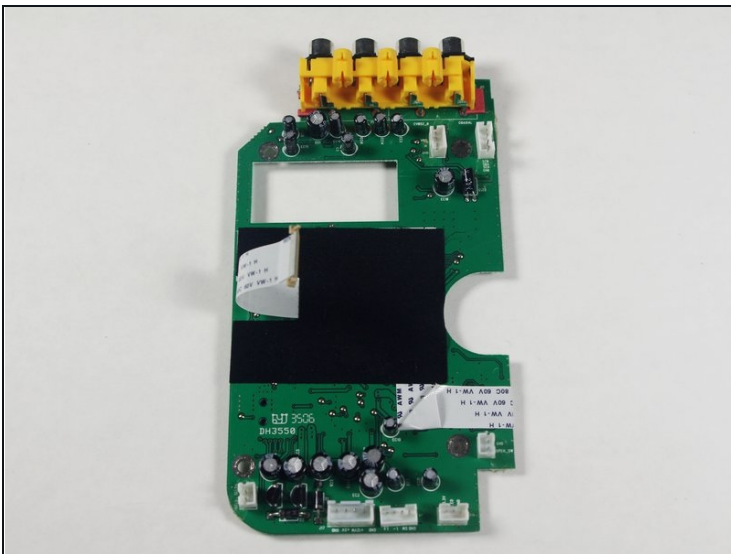
- Remove the four 5mm screws circled in red.
- Place the plastic opening tool underneath the circuit board, and lift up gently. As you lift up, slide the circuitboard in a direction away from the AVI ports.

Step 9 — Power Port and AVI Port



- On the circuit board with the Power Port, de-solder the circled areas on the back to remove the Power port.

Step 10



- On the circuit board with the AVI Port, de-solder the circled areas on the back to remove the AVI Port.

To reassemble your device, follow these instructions in reverse order.