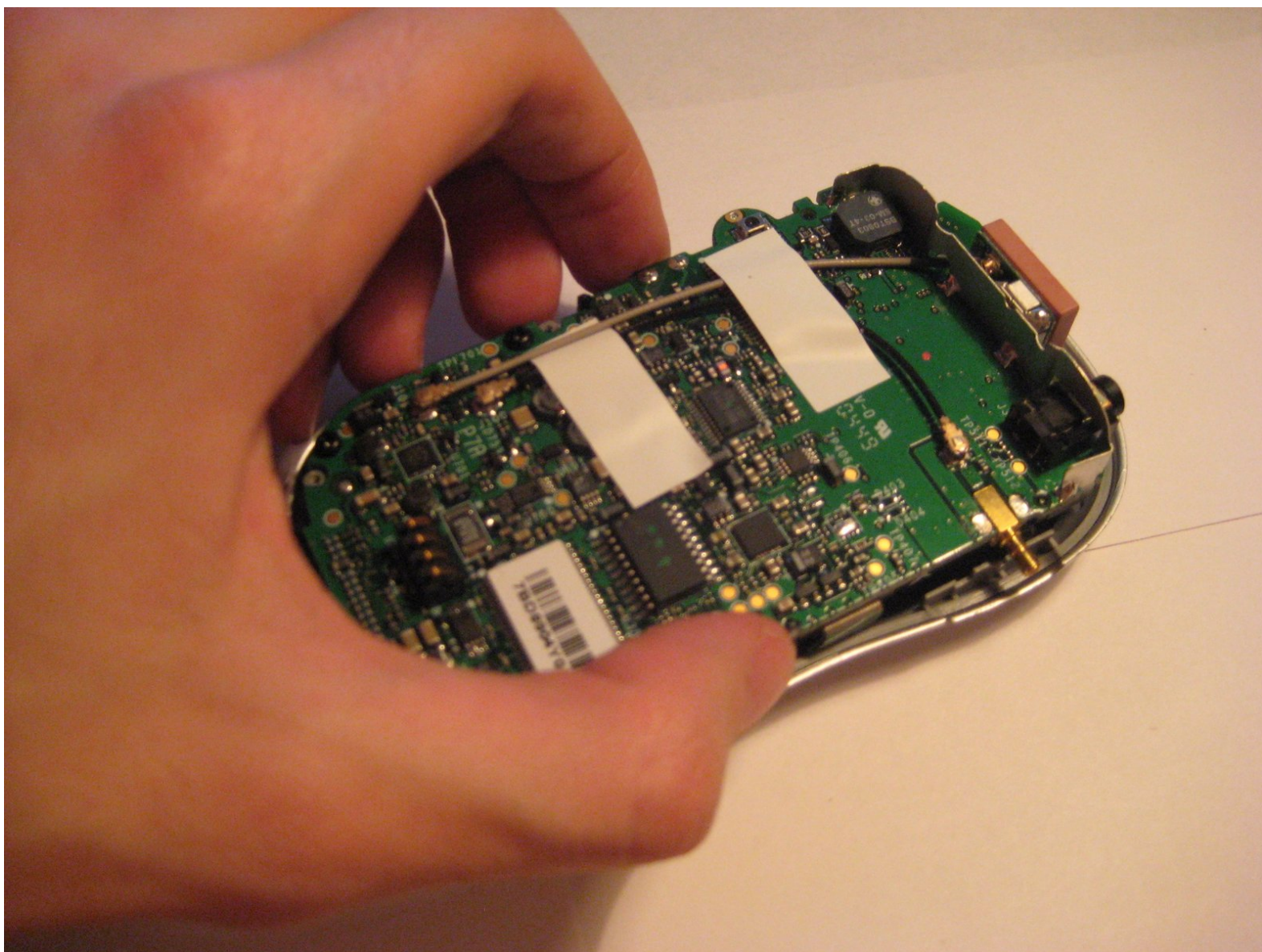




Delphi MyFi XM2GO Motherboard Replacement

How to remove Delphi MyFi XM2GO PCB motherboard.

Written By: Scott Byer



INTRODUCTION

Ever want to disassemble and reassemble your Delphi MyFi XM2GO portable XM radio? Follow this guide to learn how to remove the motherboard (PCB logic board) of the Delphi MyFi XM2GO portable XM radio. You will need a Torx T6 screwdriver to complete this guide. Warning: you may have to use your fingernails to pry off certain parts.



TOOLS:

- [T6 Torx Screwdriver](#) (1)
-

Step 1 — Battery Cover



- Locate the large button on the top of the device.
- Push down on the button and slide the cover away from the button.

 The battery removal tab may pop up.

Step 2 — Battery



- Grab the red pull tab and pull down to unlock the latch.
- Pull the battery out.

Step 3 — Motherboard



- Remove the four screws from the bottom of the device using a T6 Torx screwdriver.

Step 4



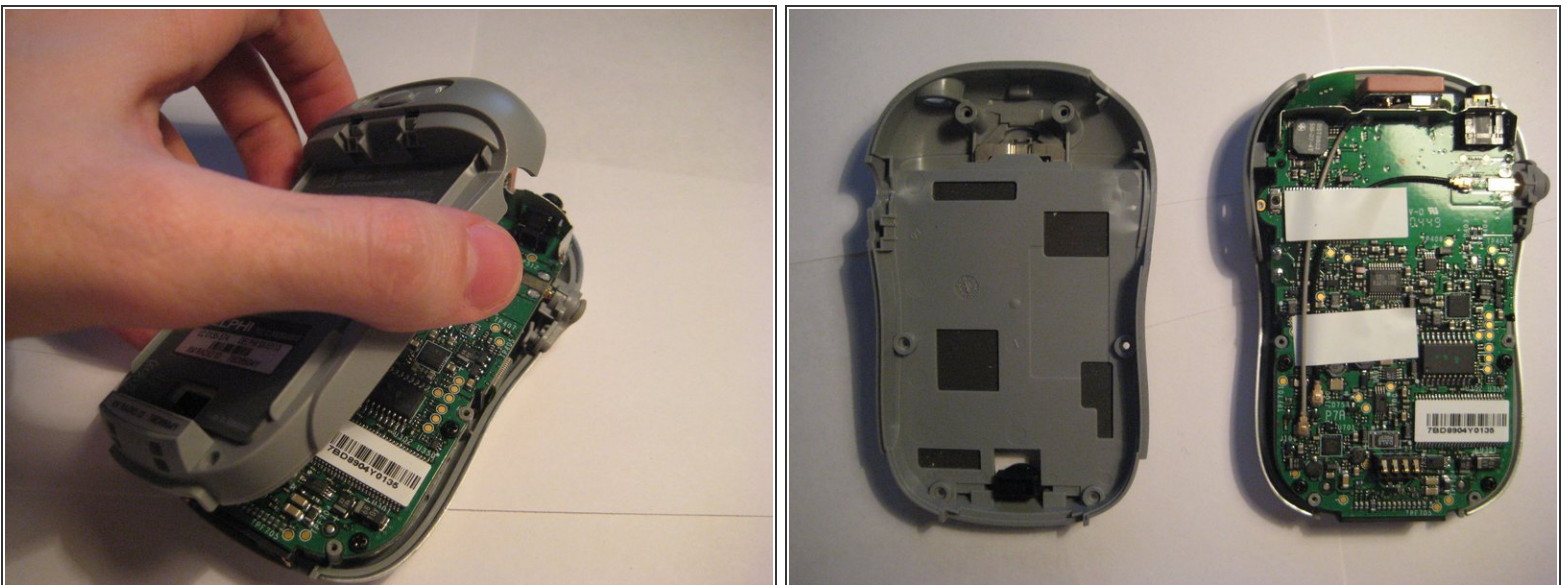
- Remove the button cover on the back of the device by prying it up with a spudger or your thumb nail.

Step 5



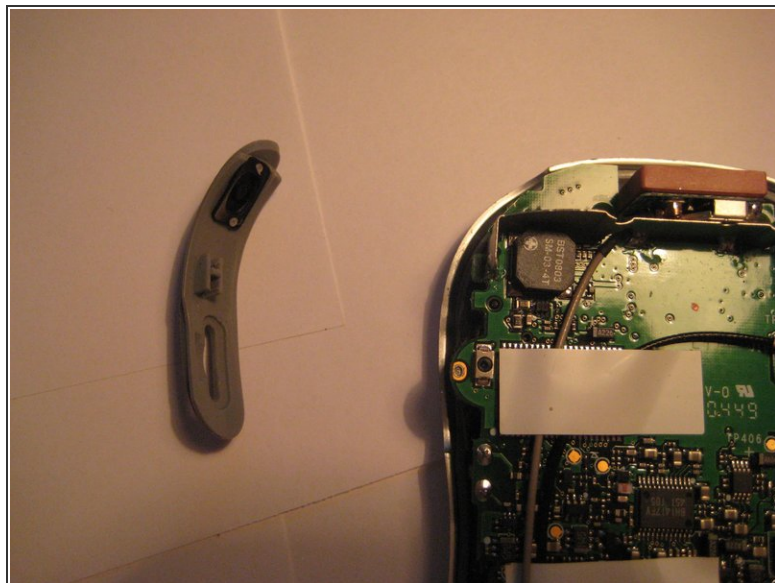
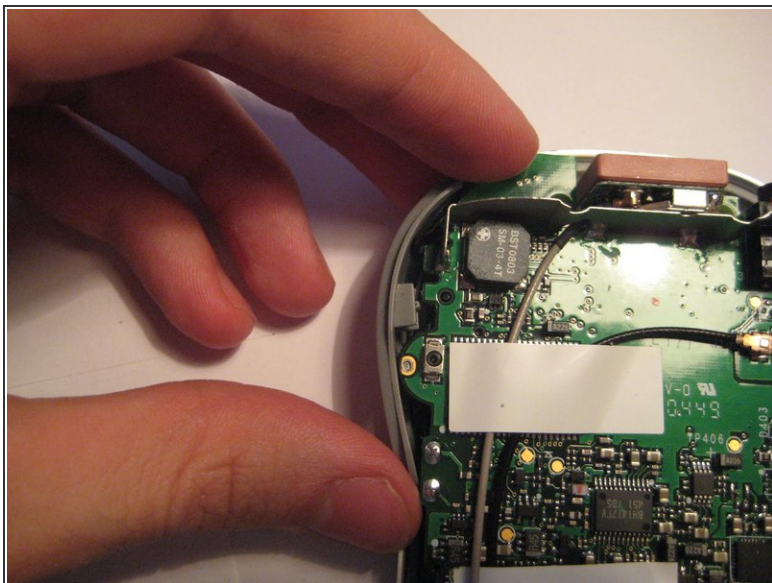
- Remove the two screws under the button using the T6 Torx screwdriver.

Step 6



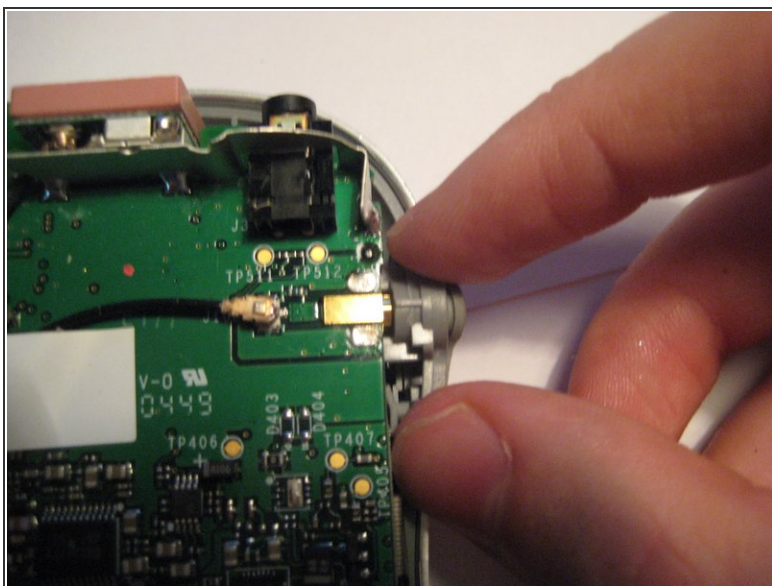
- Remove the back cover.

Step 7



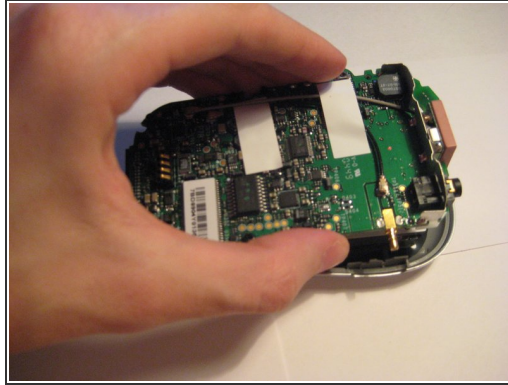
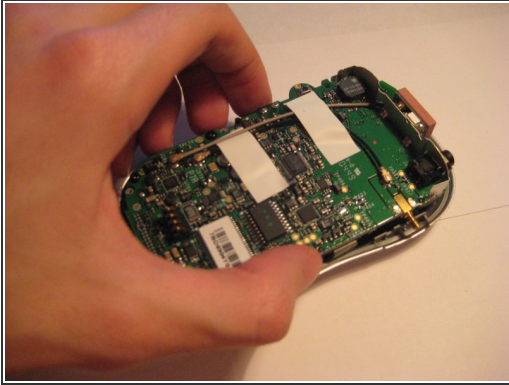
- Remove the power button by pulling it to the left.

Step 8



- Remove the plastic antenna extension connector on the right side of the device.

Step 9



- Pull up on the motherboard to remove it from the device.
- ⓘ The LCD screen and keypad are only connected to the motherboard with ribbon cables. They will hang down as the motherboard is removed.

To reassemble your device, follow these instructions in reverse order.