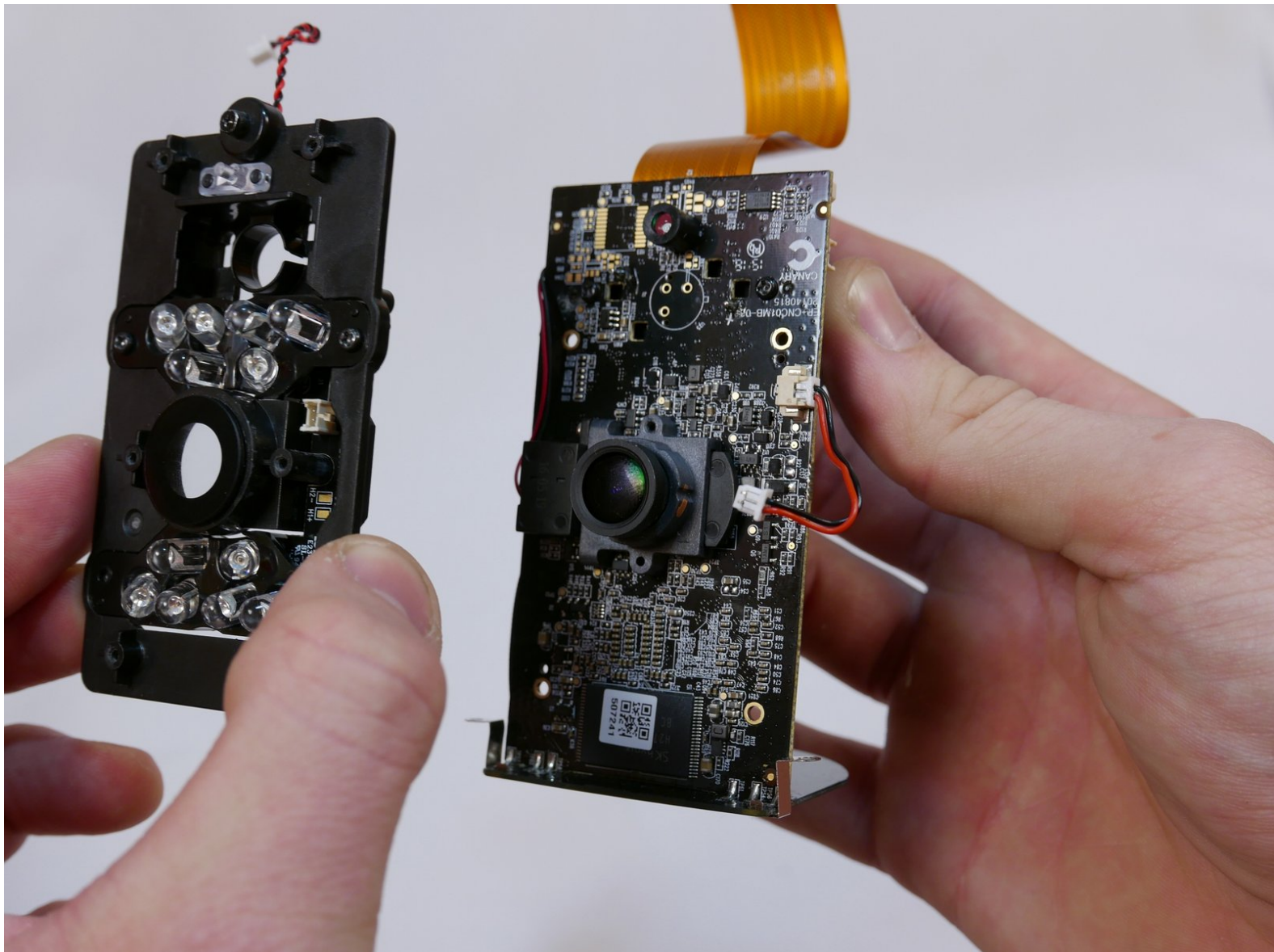




Canary CAN100USBK Infrared LED Board Replacement

Replace the plastic board which contains the infrared LEDs and protects the lens assembly.

Written By: Tommy Nguyen



INTRODUCTION

If your Canary does not light up, this guide will show you how to replace the Infrared LED board.

Before you unscrew anything, there are two power connectors you must disconnect. As always, do not pull on the wires of the power connector.

The four screws for the heatsink also hold the infrared LED board in, so grab onto it to prevent it from falling. There is another set of screws on the board for the LED frame; you do not need to remove these.

A Phillips #0 screwdriver can be used for all four screws.

TOOLS:

- [Phillips #0 Screwdriver](#) (1)
 - [Spudger](#) (1)
-

Step 1 — Bottom Casing



- Grip the rubber ring with your fingers and pull up.
- Rotate the Canary as you pull out one tab at a time.

Step 2



- Use your Phillips #0 screwdriver to remove the four 6mm screws.

Step 3



- Use the flat end of the spudger to carefully pry off the bottom casing.
- Alternate pushing up on the left and right sides until the clips holding the case in are visible.

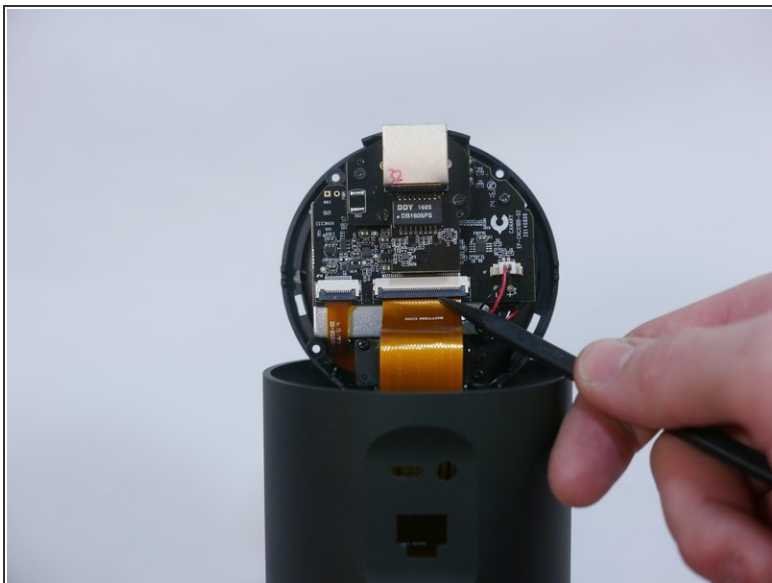
Step 4



 Do not yank the bottom off or you may damage the ribbon cable or the ZIF connector.

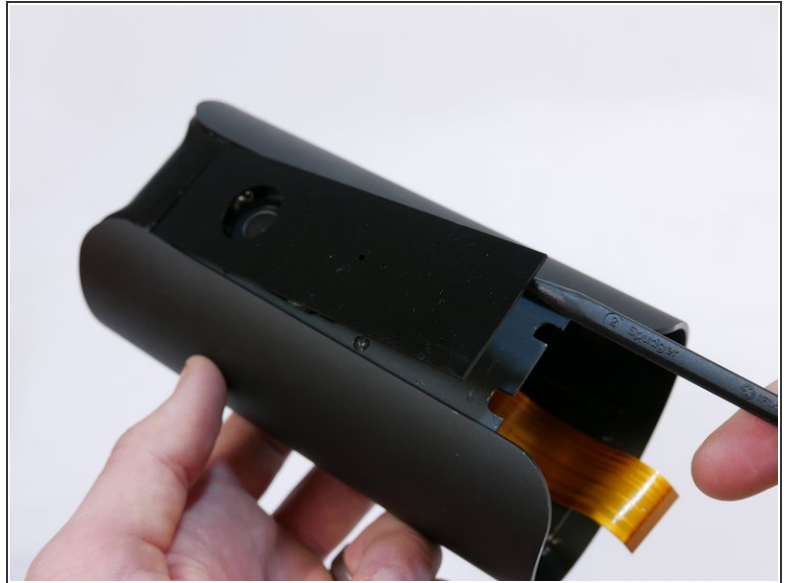
- Carefully remove the bottom casing by gripping it on both sides and pulling straight up.

Step 5



- Use the pointed end of the spudger to flip up the small retaining flap on the ZIF ([zero insertion force](#)) connector.
- Pull the ribbon cable out towards the device.

Step 6 — Front Panel



- There are two empty nooks underneath the bottom of the panel close to each side of the case.
- Place the pointed edge of the spudger in one of the nooks under the panel and pry upwards.

Step 7



- ⓘ Adhesive will have to be reapplied after removing the panel.
- Pull the panel away from the device.

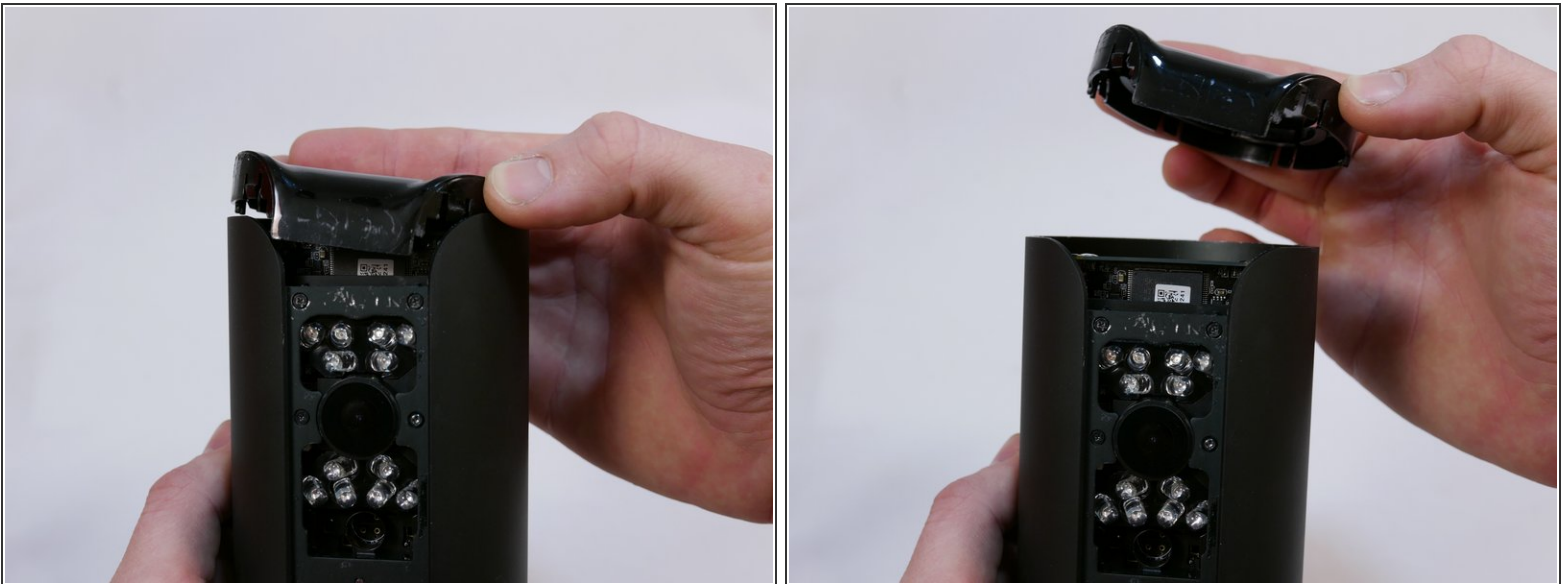
Step 8 — Top Casing



- Use the flat end of the spudger to carefully pry off the top casing.
- Alternate pushing up on the left and right sides until the inner clips are released.

⚠ Do not use too much force or the top may fly off unexpectedly.

Step 9



- Pull the top casing away from the device.

Step 10



- Use your Phillips #0 screwdriver to remove the two 5mm screws.

Step 11 — Infrared LED Board



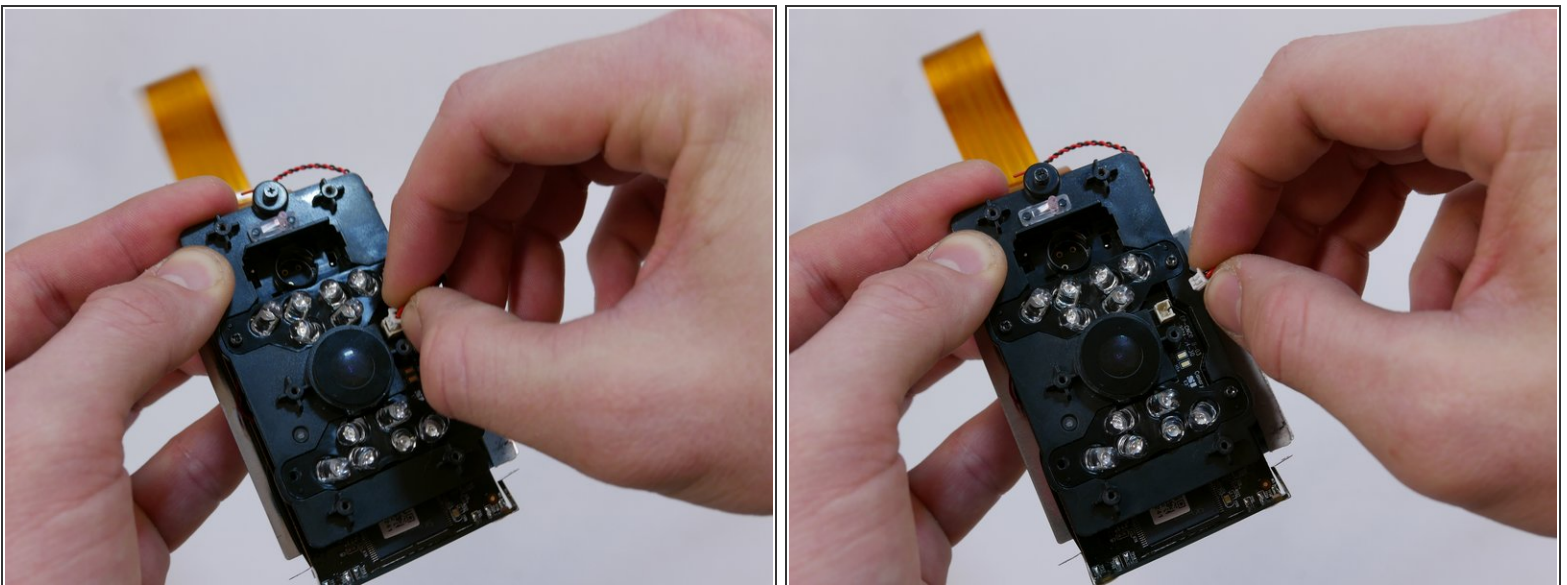
- Using a Phillips #0 screwdriver, remove the six 6mm screws.
- ⓘ The seventh screw in the bottom middle is not connected to the motherboard and does not need to be removed.
- ⚠ As you remove the screws, hold on to the motherboard to prevent it from falling and sustaining damage.


Step 12



- Grip the circular part of the motherboard and pull it straight out of the device.

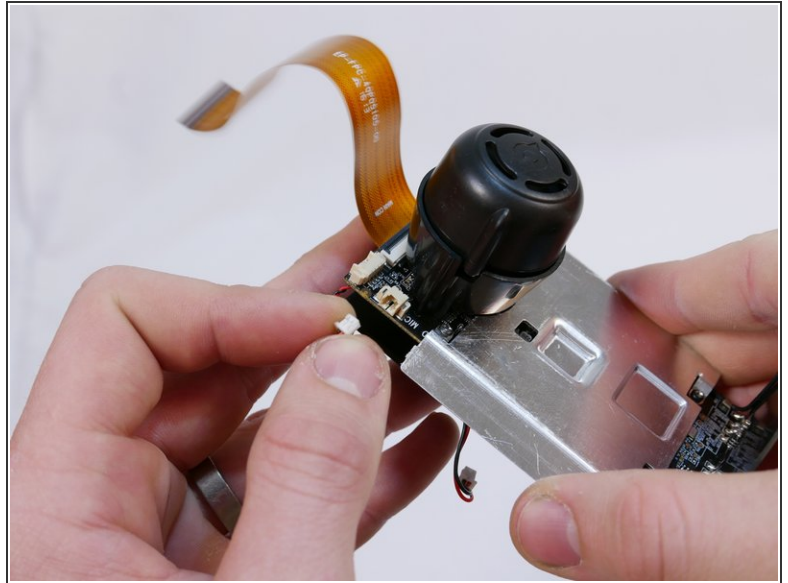
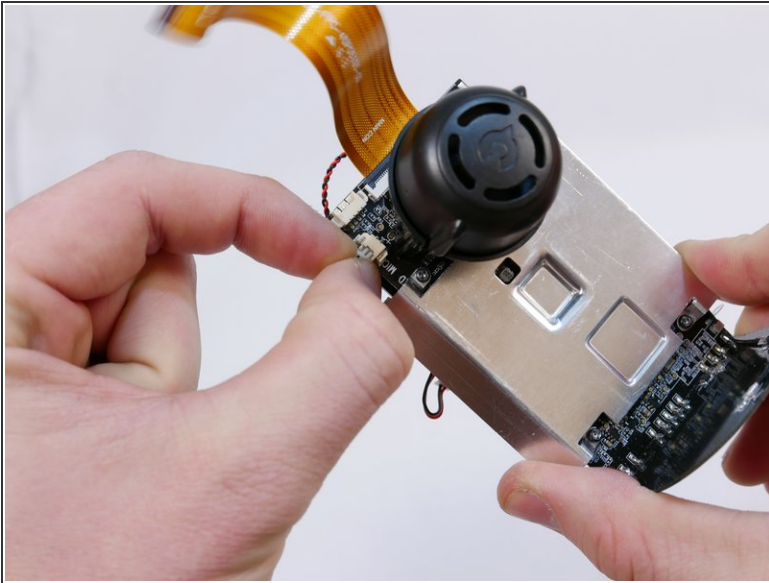
Step 13



 Do not pull on the wires themselves as they are fragile and may break from the connector.

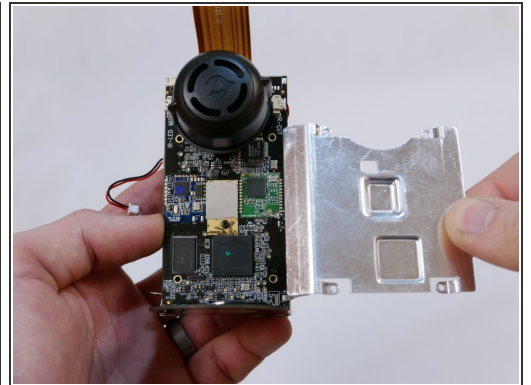
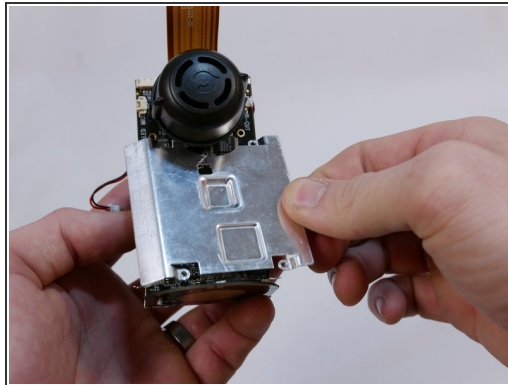
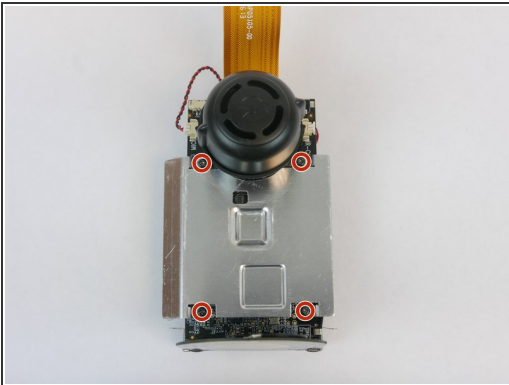
- Locate the power connector next to the lens protector on the infrared LED board. Using your fingers, wiggle the power connector back and forth until it is loose.

Step 14



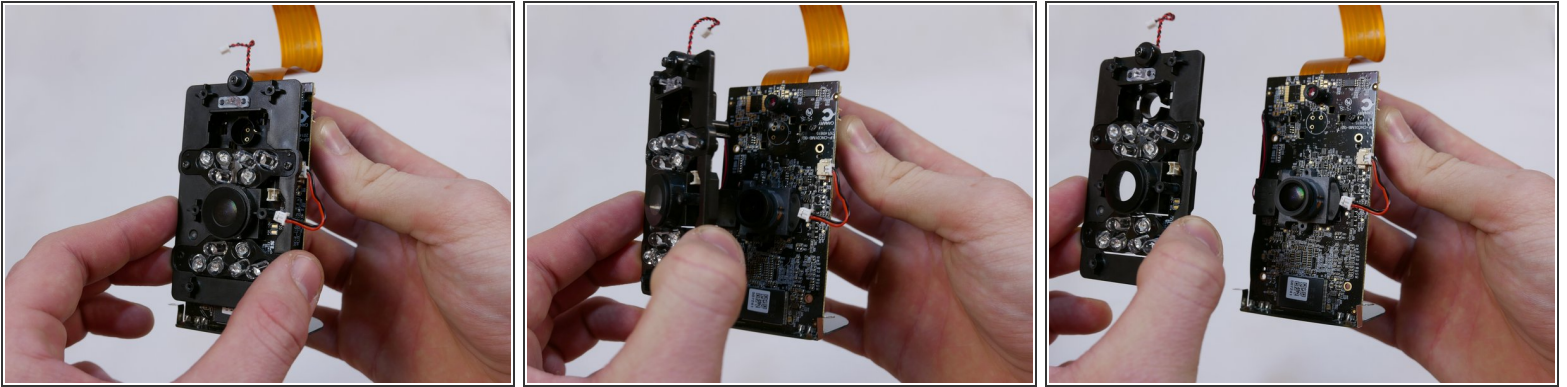
- Find the power connector next to the buzzer that is labelled "MIC IR-LED". Use your fingers to wiggle it back and forth until it becomes loose.

Step 15



- Remove the four Phillips #0 6mm screws.
 - Lift the heatsink up and pull it away from the motherboard.
- ⚠ These screws also hold the infrared LED board in. Be sure to hold it while you remove the heatsink screws.

Step 16



- Lift the infrared LED board directly upwards and pull away from the motherboard.

To reassemble your device, follow these instructions in reverse order.