



PlayStation Move Case Replacement

This is a prerequisite guide that will show you how to disassemble the PlayStation Move controller.

Written By: Sarah Shand



INTRODUCTION

This is a prerequisite guide that will show you how to disassemble the PlayStation Move controller.



TOOLS:

- [Phillips #00 Screwdriver](#) (1)
 - [iFixit Opening Tools](#) (1)
-

Step 1 — Case



- Turn the controller over and unscrew the four 10mm screws with a PH #00 screwdriver.

Step 2



- Pinch the sides of the back panel to remove it and set it aside.

Step 3



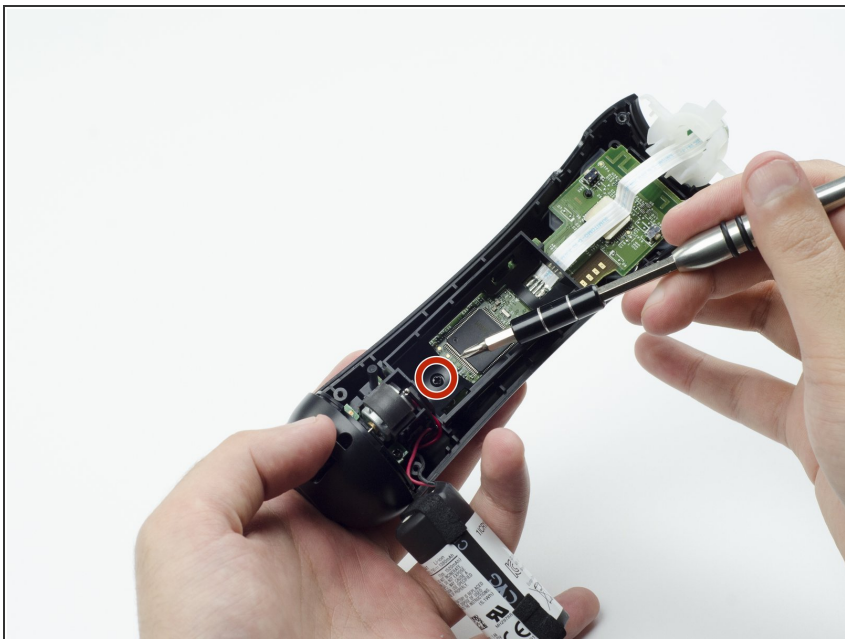
- Hold the base of the controller with one hand and with the other carefully pull up on the white spherical piece to remove it.

Step 4



- Push the Lithium Ion battery from its slot to remove it.
- ⓘ Be mindful not to damage the wires or wired components, as the battery will still be attached via its connector.

Step 5



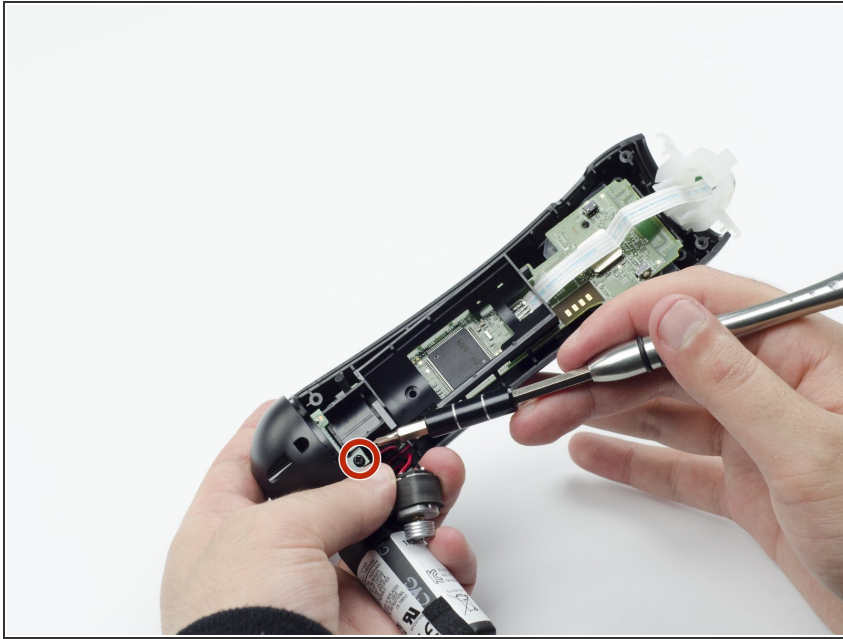
- Unscrew the 9mm screw in the battery slot with a PH #00 screwdriver.

Step 6



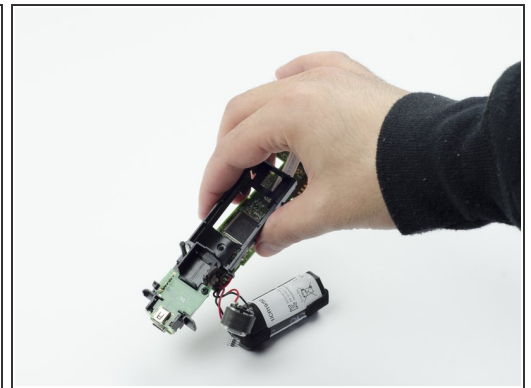
- Using a plastic opening tool, carefully pry the rumble motor free.

Step 7



- Unscrew the 9mm screw behind the rumble motor slot with a PH #00 screwdriver.

Step 8



- Carefully pinch the plastic sides of the battery slot and lift it (along with the circuit board) from the plastic shell of the move controller.

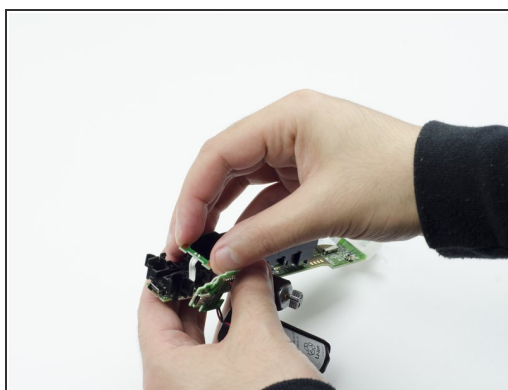
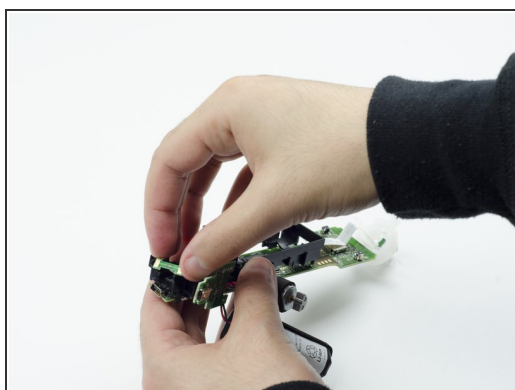
Step 9



- Using your fingers, carefully pry the square green piece beneath the battery slot free.

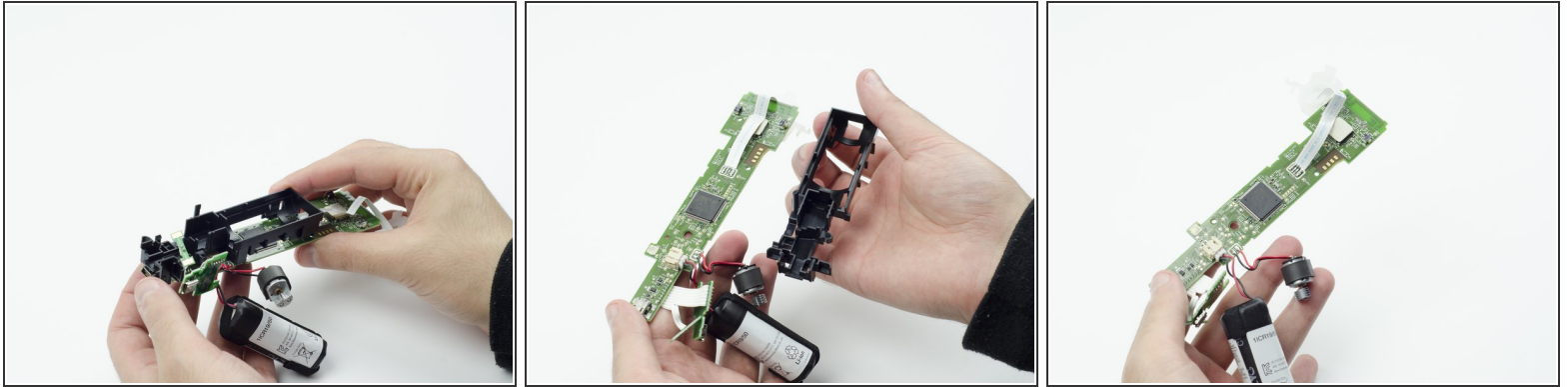
i It is attached via white ribbons which need to be kept intact.

Step 10



- Follow the white ribbon attached to the part you just removed to a smaller, more rectangular piece.
- Lift the rectangular piece from its slot to free it.

Step 11



- Carefully lift the entire circuit board from the black plastic encasing it.

 Take extra care not to damage any of the wired components.

To reassemble your device, follow these instructions in reverse order.