



GoPro HD Hero2 Front Case Replacement

The front case of your GoPro is constantly...

Written By: David Hodson



INTRODUCTION

The front case of your GoPro is constantly being subjected to potentially dangerous obstacles: trees, bears, viking ships, and who knows what else. Should you happen to crack or break the front case, you can replace it with a brand new one.

TOOLS:

[Tweezers](#) (1)

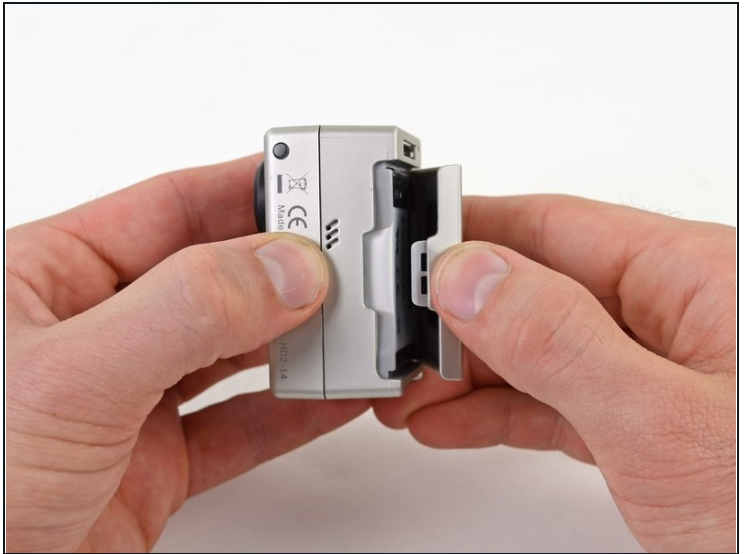
[Phillips #0 Screwdriver](#) (1)

[Phillips #00 Screwdriver](#) (1)

[iFixit Opening Tool](#) (1)

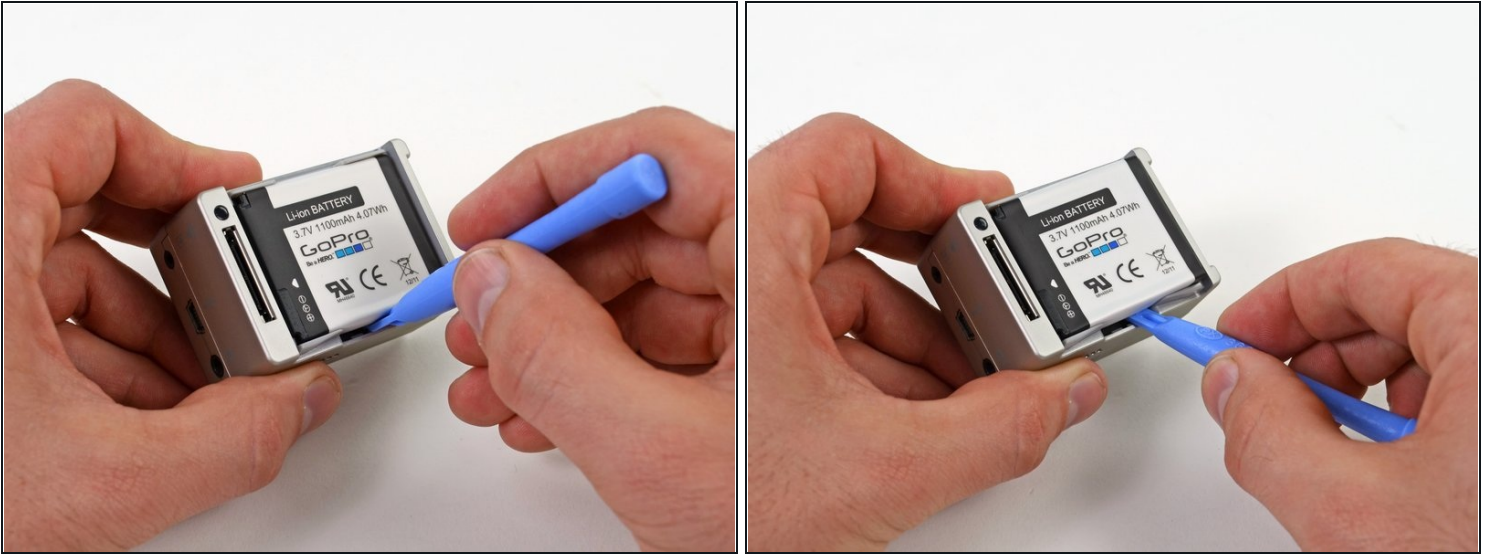
[Spudger](#) (1)

Step 1 — Back Cover



- Place your thumb on the indentation in the back case on the side of the GoPro.
- Gently press down with your thumb and lift the back cover away from the case to remove it.

Step 2 — Battery



- Slide a plastic opening tool between the battery and the rear case.
- Gently pry the battery up and out of the rear case.

Step 3



- Remove the battery from the case.

Step 4 — Rear Case



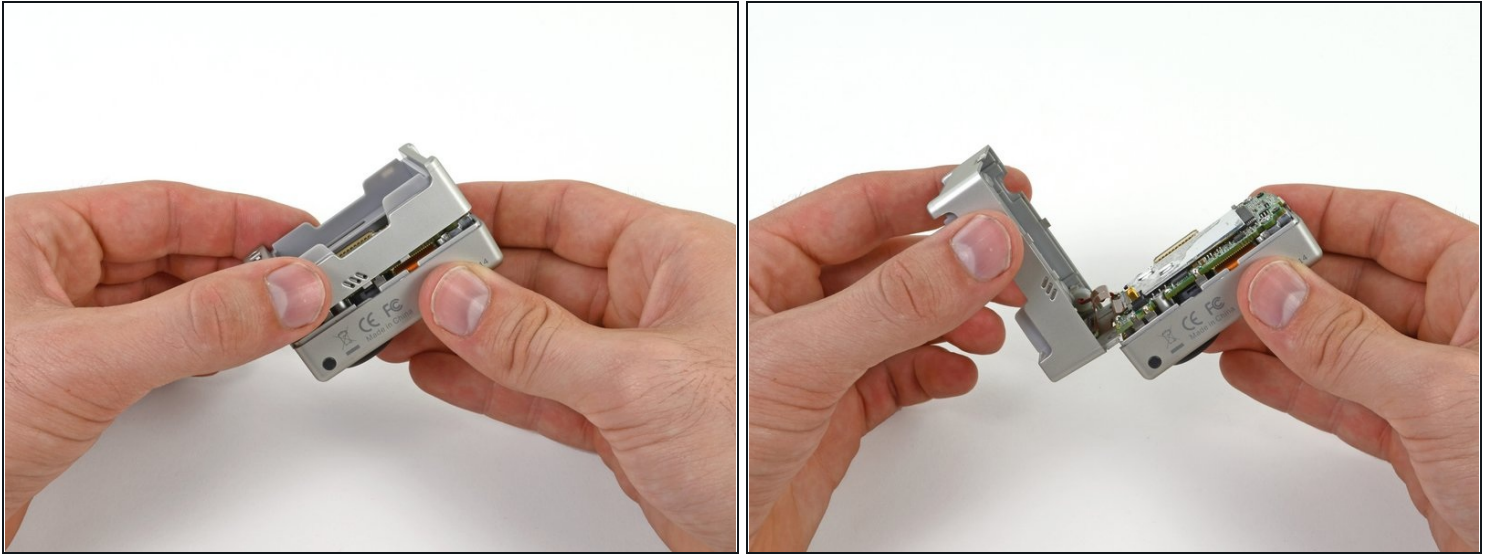
- Remove the four Phillips #00 screws securing the rear case to the rest of the device:
 - Two 5.5 mm coarse thread screws.
 - Two 4.4 mm fine thread screws.

Step 5



- Slide the edge of a plastic opening tool underneath the sticker on the rear cover and gently peel the sticker up.
- Once you have enough of the sticker peeled up with the plastic opening tool, grab an edge of it with your fingers and pull it off completely.

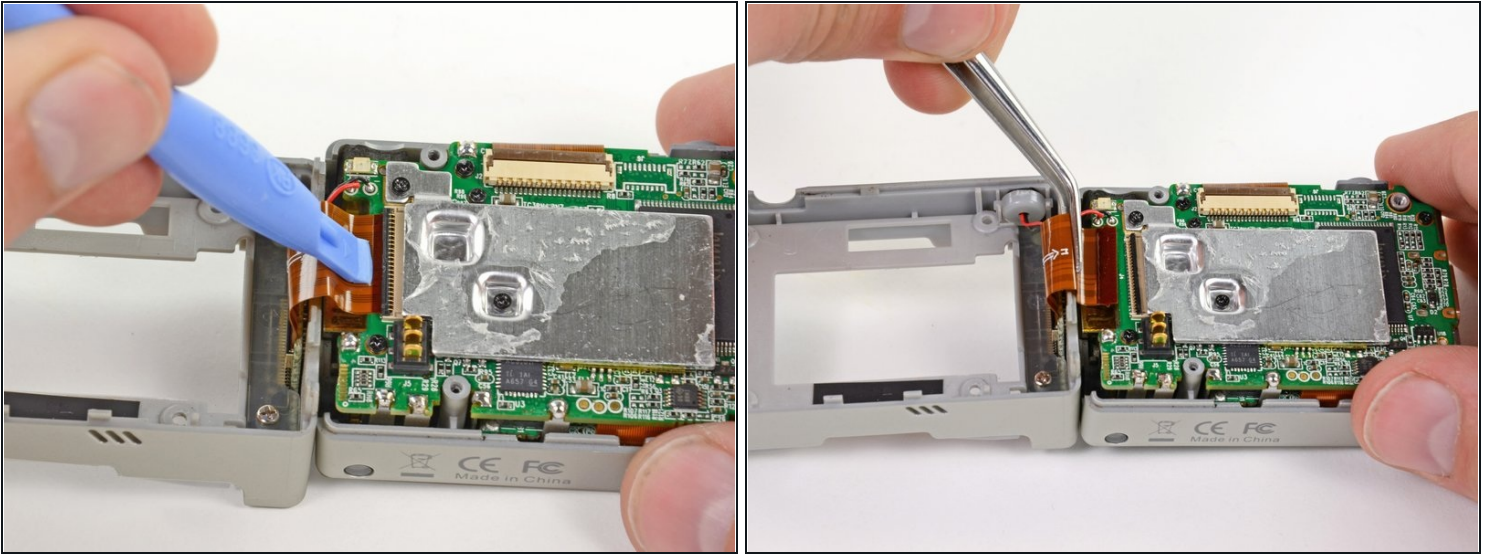
Step 6



- Grasp the rear case and lift it off of the front case.

⚠ Do not try to completely remove the rear case yet, as it is still attached by the display port ribbon cable.

Step 7



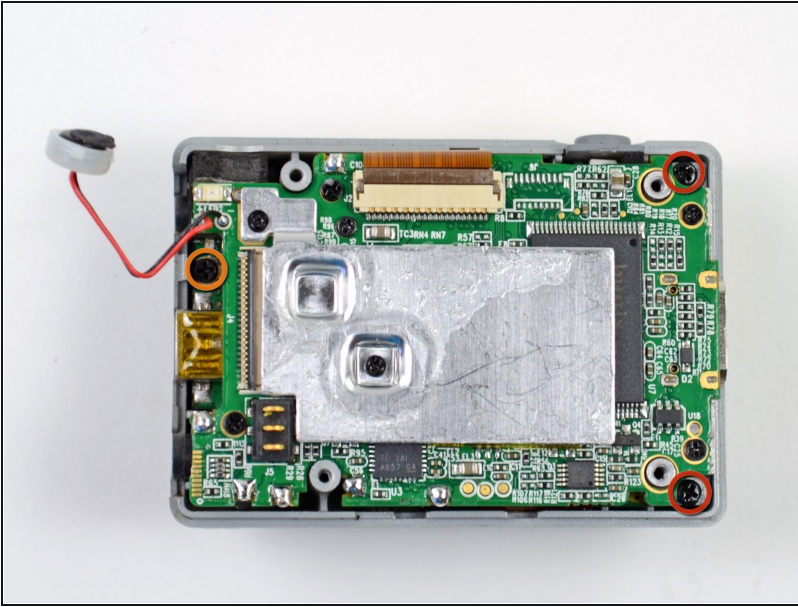
- Using a plastic opening tool or your fingernail, flip up the locking tab on the SD board ribbon cable ZIF connector on the motherboard assembly.
⚠ Be careful that you are prying on the locking tab, and not the connector itself.
- Use a pair of [tweezers](#) to remove the SD board ribbon cable from its connector on the motherboard.

Step 8



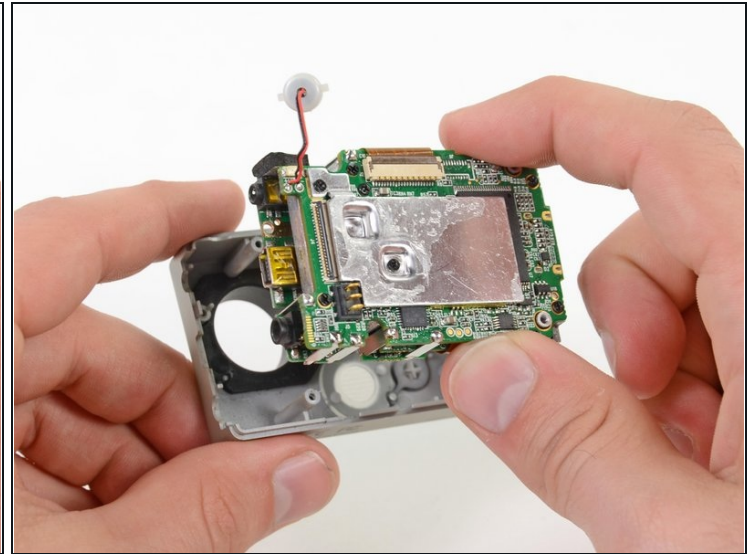
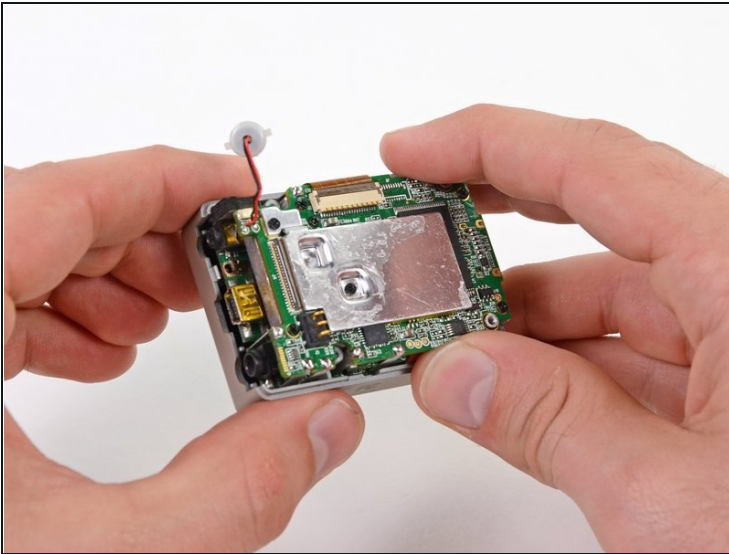
- Lift the speaker out of the rear case with the tip of a spudger.
- Remove the rear case.

Step 9 — Motherboard Assembly



- Remove the three screws securing the motherboard assembly to the front case:
 - Two 10.8 mm Phillips #00 screws.
 - One 4.8 mm Phillips #00 screw.

Step 10



- Gently grab the edges of the motherboard assembly and lift it out of the front case.

Step 11 — Front Case



- The front case remains.

To reassemble your device, follow these instructions in reverse order.